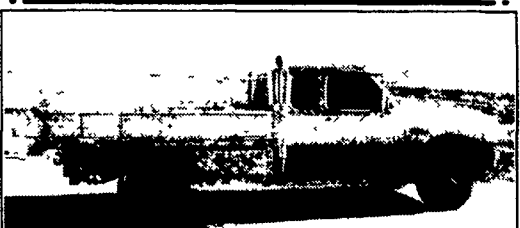


35

TRUCKS  
AND  
TRAILERS



**93 DODGE 350 4X4 EXT. CAB**  
Cummins Turbo Diesel, Eby 9 1/2' Aluminum  
Dump Bed with Tool Boxes, 154,000 Mi.  
**\$18,500**

**89 28' COACHMAN CATALINA**  
460 EFI, 133,000 Miles, Self-Contained  
Generator, AC, Sleeps 6  
**\$6,500**

**86 DODGE VAN**  
12 Passenger, 318 Automatic - **\$550**

**90 JEEP CHEROKEE**  
Loaded - **\$6,000**

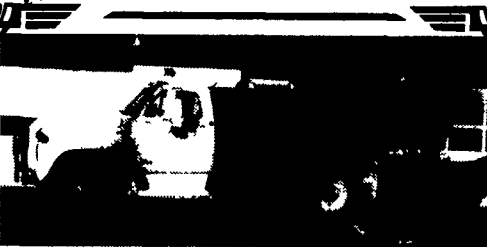
**717-993-2637**

**FOR SALE**



**1975 Chev. C30 Contractor Dump**  
**1-TON 8 FT. DUMP**  
350 V8, 4-Spd., Dual Rear Wheels,  
**\$3,600**

Call 717-865-7575 or 717-507-5017



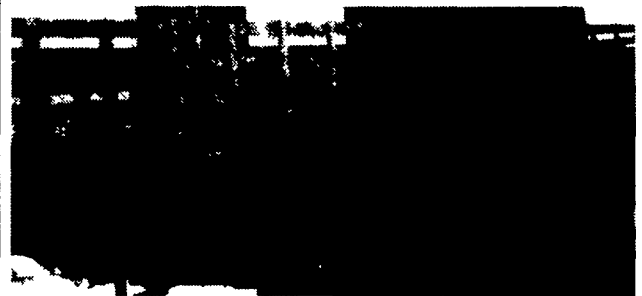
**1976 D600 Dodge Truck**  
w/ John Bean 40 RC Air Crop Sprayer,  
500 gal. tank, Creek fill pump  
**\$4,800**

**717-442-4017**

**BARKUS & SONS**

TRUCK CENTER, INC.

321 Maple Avenue, Horsham, PA 19044.  
215-674-2016 Fax: 215-674-2059



1982  
Centerville  
40ft  
tandem  
axle stake  
trailer.  
Fresh  
government  
release.  
42" high  
racks with  
bulkhead.  
Price  
**\$2,990.**  
each



**HUNTER KEYSTONE  
PETERBILT**

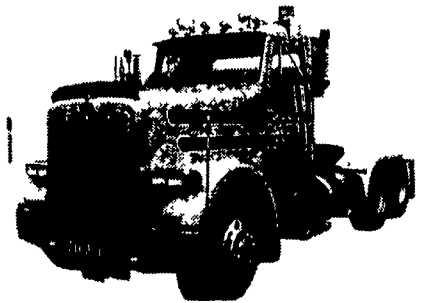


1467 Manheim Pike • Lancaster, PA 17604  
717 299-6630 • 800 243-2458

**DAY CABS!**

1 - 1995 } Peterbilt  
1 - 1997 } 378

Cummins N14  
13 speed trans, Jake brake  
3.55 ratio, 190" w.b., 11/22.5  
tires, air trac susp., both under  
200,000 miles  
CALL FOR DETAILS



**KELLER BROS.**

(Buffalo Springs) Lebanon, PA

717-949-2000 or 1-800-363-2767

LEBANON COUNTY'S HEAVY DUTY TRUCK HQTRS.

1999 F250's, 350's, XL, XLT & Duallys 4x4 &  
Gas or Turbo Diesels

**1988 MERCURY  
GRAND MARQUIS  
GS**  
Loaded, Maroon,  
One Owner



**1998 FORD  
EXPEDITION**  
XLT, 4x4, 4.6 V8, AT, A/C,  
PW, PL, PS, 1-Owner,  
Low Miles  
**SPECIAL \$20,000**



**1998 DODGE RAM  
1500 QUAD CAB**  
Laramie SLT, 4x4, AT, A/C,  
Most Options



**1993 JEEP  
WRANGLER 4x4**  
A/C, 5-Sp., New Soft-Top,  
Bright Red, Ready for  
Snow or Sunshine, Low Mi.



**1994 FORD F150  
SUPERCAB XLT**  
4x2, AT, V8, Loaded,  
Low Mileage



**1999 & 2000 F250 & 350's**  
XL, XLT's, Lariats, Single Axle and Duallys,  
Gas & Diesel

**FORD RANGERS**  
4x4 SUPER CABS  
4 To Choose From  
1993 1997  
1994 1999



**1995 FORD F150**  
Super Cab, Long Box,  
AT, V8, 4x4, Low Miles,  
XLT Trim



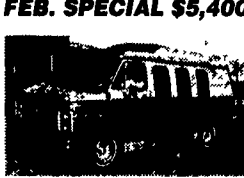
**1997 FORD F250  
4X4 DIESEL**  
XLT, 5 Spd.,  
28,000 Miles, Very Clean,  
Black & Red



**1992 CHEV S10  
EXTEND CAB**  
4x2, 6 Cyl., 5-Spd.,  
Tahoe Pkg., Low, Low  
Miles, Just Traded



**1989 CHEV C20  
CONVERSION VAN**  
Local Trade  
**FEB. SPECIAL \$5,400**



**1997 CHEV  
SUBURBAN LT**  
Leather, 4x4, 3rd Seat, CD  
Player, All Power Options,  
1-Owner



**JUST  
ARRIVED**  
2000 F250's  
Super Cab, 4x4, Diesels  
Short & Long Bed

**1991 CHRYSLER  
FIFTH AVENUE**  
All Power Options, Dual  
Power Seats, One Owner,  
Very Clean



**1997 FORD F250  
XL 4X4**  
Diesel, Heavy Duty, DK  
Green, One Owner,  
Just Traded



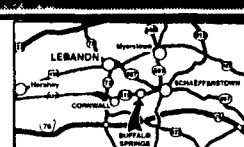
**FORD  
EXPLORERS**  
8 To Choose From  
2 Door & 4 Door  
94 thru 97



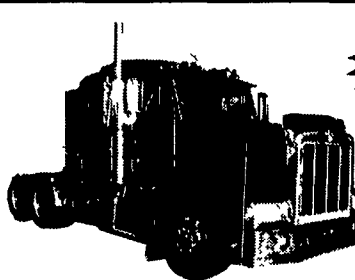
**USED 1999 FORD  
F150 SUPER CAB**  
4x4, Lariat, Leather, AT,  
Every Option Avail.,  
Save Thousands



**1994 JEEP  
CHEROKEE**  
4x4, 4 Dr., 4.0 6 Cyl.,  
AT, AC, One Owner,  
Clean



**KELLER BROS. FORD HAS SERVED  
CENTRAL PENNA. AREA FOR MORE  
THAN 78 YEARS.**



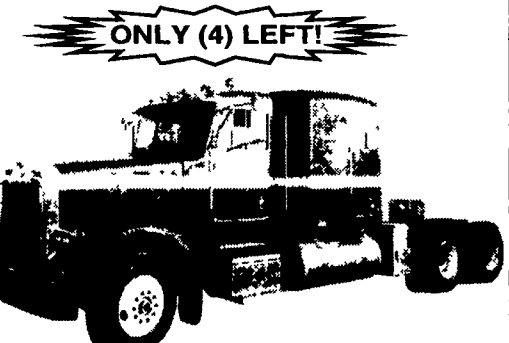
**1994 Peterbilt 377, 36" Sleeper,**  
3406E Cat, 410 HP, Jake Brake, 10  
Speed, 4:11 Ratio, Alu. Wheels, 200"  
Wheelbase, Low Air Susp., 625,000  
Miles, Excellent Maintenance!



**Peterbilt 330, 10' Dumps, Cat &**  
Cummm. Power, 9 Spd., 33,000 GVW,  
Locking Rear, Air Ride, 10:23 Axles.



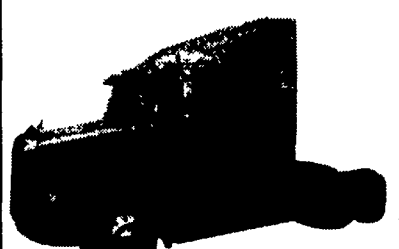
**1995 Peterbilt 378,**  
Cat 3406E, 435 Hp Eng.,  
Fuller 18 Speed Trans.,  
Unibuilt 63" Low  
Sleeper, LP 22.5 Tires,  
12 & 40 Axles, 3.90  
Ratio, Air Trac Susps,  
Jake Brake, Steel  
Wheels, Dual 135 Gal.  
Tanks, Accent Interior,  
Color Blue



**ONLY (4) LEFT!**



**1996 International 4700, 444, 190**  
Hp. Eng., 6 Speed Trans., 72,000  
Miles, 25 5 GVW, Includes Plow, Tilt  
Bed & Salt Spreader - Excellent Cond.



**1993 Volvo WIA64TES, Detroit S60**  
12.7L, 430 HP Eng., 60" Sleeper, Jake  
Brake, 230" Wheel Base, 3:90 Ratio,  
Air Ride Susp., Alum. Wheels.

Call for info on over 30 used trucks in stock!  
We can locate what you're looking for!