

11 SWINE

BENNECOFF'S HOGS
Boars & Gilts, Service Age, Hamp, Polands, Berks Durocs & Yorks. 610-285-6582.

Remodeling 4 layer houses, Diamond & Favorite systems, some Chorettime. 717-653-2073

Rhode Island Reds, pullets & started chicks. 717-432-7852, 717-774-3690

BUSINESS FOR LEASE
62,000 Caged Layer House w/All Equip, Full of Chickens. Includes Tenant House. Exc Income for Couple. Owner Retiring. 410-756-2743

(4) GQF Incubators, (2) GQF Hatcher. (1) Hatcherite Incubator 1-888-551-1044

Poultry equipment: 4,000' Val nipple waterers, 2' centers, 4,000' high back feed trough & chain. 400 10' dropping boards. 610-767-2409

80 Large range fed African & Talouse geese, good foragers & layers. 717-527-2501

Let the experts grow your started pullets. Lifetime of experience. Excellent growers. Good floor housing. Variable size buildings. Ted's Started Pullets Inc. 570/837-0449.

Fancy, Heavy Roosters WANTED YEAR-ROUND 717-484-4549

Baby chicks: fast growing broiler chicks, high production layer chicks, brown and white egg. Call Moyer's Chicks, Quakertown, PA, 215-536-3155.

CORNISH X MEAT CHICKS

Egg Layers, Turkeys, Ducklings, Goslings, Game Birds

Started Surgical Capons
Myers Poultry Farm
21st Bypass, Edinboro, PA 17032
(814) 539-7026

CHUKAR CHICKS

72¢ Buy 1000 Plus Postage Guaranteed Live Delivery 20,000 weekly
WOLFE'S GAMEBIRD HATCHERY
RD #2 Box 359 Brookville, Pa. 15825
(814)849-3430

Ammonia HOLD® PLUS

Poultry litter treatment - effectively treats built-up litter for 5 weeks. 1 bag does 5,000 sq. ft. \$35/bag Pickup at Michael Nolt, Ephrata 717/738-4403

FREE NEW! Chick & Turkey Catalog. Wholesale Prices.

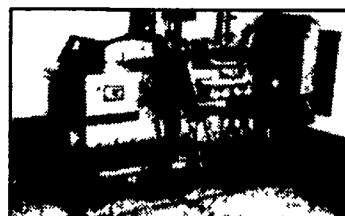
Call or write today.
REICH POULTRY FARMS
1625 River Road, Marietta, PA 17547
CALL NOW 717-426-3411

For Pure Muscovy Ducklings That Are Not Hybrid And Have The Firmest Meat, Ask For The **Hoffman Muscovy Duck**

Call For Our Low Prices
Also, French Guineas, Embden Goslings
Free Catalog On Goslings, Ducklings, Chickens, Turkeys, Guineas, Bantams, Pheasants, Quail, Chukars, Swans. Medications, Equipment And Books.

717-365-3407
HOFFMAN HATCHERY
Box 129, Gratz, PA 17030

POWER SYSTEMS ELECTRIC, INC.



SPECIALIZING IN GENERATOR SALES, SERVICE AND RENTALS
Myerstown, PA
(717) 933-5617 (800) 875-6964

(1) 40 KW Ford
New and Used PTO Generators in Stock

New & Used Transfer Switches

Country Power Washing

Increase the efficiency of your farm w/high pressure cleaning, disinfecting and paint stripping.

We clean all types of buildings and equipment: Agriculture, residential and commercial.
* Breeder Houses * Turkey Houses * Hog Barns
* Dairy Barns * Milking Parlors * Veal Barns
Call to check our prices. Your satisfaction is our goal!!
(717) 762-8406

PARRISH FARMS HOG SALE
Saturday, March 4, 1:00 P.M.

2 1/4 miles east of Edon, Ohio (in heated sale barn)

150 Bred Gilts - Bred To Our Super Herd Boars
(For March, April, May Litters)

Selling Durocs, Bred Durocs, Duroc Bred Hamp, Yorks, Bred Yorks, HxD Bred Hamp and Yorks, HxY Bred Hamp

A Great Set of Bred Gilts

40 DUROC BOARS

(Top Of The Line) Great meat lines to sire extra growth & leanness with excellent pork quality!

10 YORK BOARS

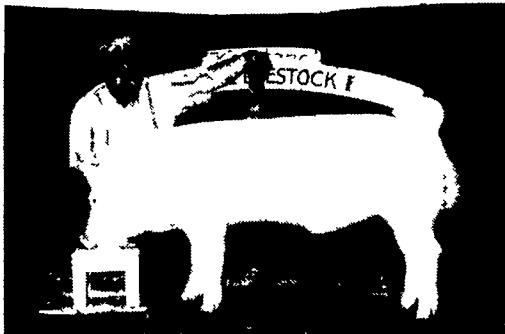
(Extra maternal - these are super)

20HxD BLACKLINE TERMINALINE BOARS
(Lots of Muscle)

75 OPEN GILTS

YORK-DUROCS CROSSBREDS

(Both purebred & F1's ready to breed - from very productive sow families)



Yorkshire - Breeding Swine - Champion Boar, Parrish Farms, Edon, OH



Duroc - Breeding Swine - Grand Champion Boar, Howard Parrish, Parrish Farms, Edon, OH

NOTE TO COMMERCIAL PRODUCERS

Our business is selling commercial boars and gilts with complete and outstanding genetic data. All pigs thru S E W nurseries make them the healthiest you can buy. REASONABLY PRICED because we are a family farm with no salesman

If you can't attend this sale, we offer a free buying and delivery service. Satisfaction guaranteed.

CALL 1-800-551-4647 SALE DAY OR ANY DAY

All hogs from Ohio PRV Free Herd

PARRISH FARMS

1(800) 05140 Co. Rd. J 1(800)
551-4647 Edon, Ohio 43518 551-4647

14 **POULTRY AND SUPPLIES**

Floor grown pullets available: Brown & white egg layers sold at 17 wks. Feb 9: 300 brown, May 14: 5000 brown, 250 white. Please contact Moyer's Chicks, 215-536-3155.

Order now: Brown pullets, ready 3/18, nest s/c rates. Samuel Lapp, 1598 Noble Rd., Kirkwood, PA 17536 Fountains.

2 GQF Incubators & 1 Hatcher. Like New. Call 717-933-8519

ARNOLD HOG FARMS

BRED GILTS

4 Head Due March, Bred For Crossbred Litters. 14 Head Due May & June.

BOARS

Yorkshire & Landrace Ready For March Service. Call For Scan Figures.

Open Gilts & Feeder Pigs

Consigning To PA Breeders Sale Sat., Mar. 4, 2000 Catalog Call 717-235-3478

Call For Delivery Dates To New England Area

Crossbred • Landrace Yorkshire

Leon L. Arnold 717-273-5880

Mixed hay for sale, big bales. Phone 8-5, M-F, 610-383-4717.

Good corn silage, dump trailer delivery avail. 717-393-1490

Dairy hay, v.good quality. U-haul. Issac L.Fisher, 80B N.Soudersburg RD, Gordonville, PA 17529

800 Ton corn silage harvested w/kernel processor. Also, small bales of barley straw. 717-665-5772

Alfalfa Balage, 5th cutting, 4x4 wrapped. Lanc Co 717-687-9006.

Western alfalfa: high tested for dairy and horses. Grass hay. 4x4x8 bales, 3x3x8 bales & small squares. 1-800-874-2814.

Hay dealer looking for suppliers of timothy, orchard grass, and/or mixes. Delivered to northern VA. Large loads of small square bales. 540-364-1824.

Sweet corn silage available, Wye Mills, MD. Contact Jay Friel 410-827-8811

4x5 round bales of barley straw, \$20/each. 302/398-8754.

Round 4x5 bales of Barley straw, \$20/ea. 302-398-8754

Clean Wheat Straw for sale, scales at the barn. Millersville area, Lancaster Co. 717-872-7801

Ontario hay, big square bales, 18.5% protein, first cut 80% alfalfa, \$140/ton, 63 bales per load. Reg Small 519/323-2191.

Wrapped round bales. Dry hay local & western, large & small square, round, Alfalfa & Timothy & mixed. 717-258-5224 We deliver.

Western Alfalfa: Tested, delivery available. \$50-\$100 per ton. Grass hay also available, 3x4 square bales stored inside or covered. 800-786-9794.

Western Alfalfa, 3x4 sq.bales, tested, delivery available. \$50-\$110. Grass hay also available, stored inside or covered. 1-800-786-9794

Western Alfalfa organic or others, large or small bales. Omar S. Kauffman 610-273-2990 8am

Dairy Quality Alfalfa. Tested, stored inside. Can deliver. 1-800-257-4299.

Dairy Quality Alfalfa, Mid-Sized & Small Square Bales Avail 160+ RFV. Call Toll Free 1-888-255-9344.

Top quality Indiana & Neb. 19%+p & 200%+ RFV Alfalfa! Also dry cow hay- 4x4x8 bales. Unloading & delivery included. Grinstead Hay Farms, Sheridan, Indiana, 888-758-4151.

Western alfalfa, small square bales, high RFV, high protein, delivered. 308/324-4022.

Alfalfa, Timothy mixed 1st cutting, 3'x3'x6' square bales. Stored inside. 304-263-4572.

Buying damaged grain. 717-426-2905.

Straw for Sale: Stump Acres 717-792-3216. York County.

Sweet corn silage, \$15/ton, mixed w/corn silage, \$23/ton. Delivery available. 717-898-8927 Clyde Kreider.

WANT TO BUY: Moldy Grain, Feed or BI-Products. 410-526-6892.

LIVESTOCK BEDDING: Clean sawdust up to 70 cu.yd. \$4.25/per cu.yd, plus delivery. GIFT LUMBER CO., INC. Douglasville, PA 610-689-9483 7:30am-4pm.

HAY AND STRAW for horses and dairy. We deliver. L.J. HAY, INC. 1-800-622-9902.

WANTED: damaged or moldy corn, grain or soybeans. 717-733-4516.

MUSHROOM SOIL for sale. Delivery available or pickup. 610-939-9193.

Hay suppliers, Timothy, Alfalfa, Mixed, 700 bale loads delivered. Ellyson's Inc, 330-223-1594

Alfalfa hay: dairy and horse quality, big squares or small squares. We deliver anywhere. Rock Creek Ranch, Cleveland, OK, 918-358-2541, 918-640-0486 mobil, DwaIn Carnes.

WANT: damaged or moldy corn and barley. hauling available. 800-433-6236.

Wrapped round bales alfalfa, 2nd cutting & wrapped irrigated young clover, lab tested. Can deliver. LanCo, 610-286-9772.

BARLEY & WHEAT Straw For Sale: \$100/Ton at the Barn; ALFALA HAYLAGE from Ag-Bag, Price Neg. 717-684-7728

Good quality Timothy hay, round bales, \$115. Delivered in Lancaster area. 610-381-3043

Alfalfa HAYLAGE, High in Protein. Reasonable. Delivered in Silo 717-464-2894

Organic Baleage- dairy qual., high RFV, certified, delivered. 301-983-2167

Straw in 3x3x7' Bales For Sale 610-942-0239

Wheat straw, clean & dry. 4th cutting alfalfa baleage. Delivery available. 717/258-1513.

Hay for sale- Delivered. Grass & Alfalfa, large & small bales. 734-320-1477

Clover seed, home grown, cleaned, good, germinate, \$75/bu. Berks Co. 610/682-6429.

QUALITY GRASS HAY, Good for dry cows & heifers, round bales, some stored inside. Can deliver trailer loads. 814-448-9765

CORN SILAGE Good Quality. Can Deliver Trailer Loads. 814-448-9765

Buying Soybeans For Use in Food Manufacturing, Premiums Paid, Delivered Mt Joy, Pa. 717-653-4123 NEWCOMMER SEED CLEANING

WESTERN ALFALFA very fancy 3rd cutting, small square and mid sized bales, forage analysis available, 410-527-0304.

Good quality corn silage chopped w/roller mill, treated w/ecosyl. Can deliver w/blower & truck or dump truck. Call for price & analysis. 717/872-9152, 717/371-5170.

Horse & Dairy Hay, small & large bales, delivered. Geo. White trashing machine w/all belts, working condition. Evenings, 519-323-1208.

HAY MR. HAY High quality hay & straw. Delivered to your door. Large or small square bales. 519-595-8025, 519-272-5296 mobile, fax 519-595-4441

4x5 round bales, orchard grass, inside, \$15/ea. Regular square bales, mixed grass, \$2/ea. Delivery avail. 423-235-6448.

Round bale haylage for sale, 50% moisture. 717/664-4748 leave message.

Dry shelled corn; and corn silage, kernel processed, delivery available. 814-669-4536

Shavings, \$2.50/bag. Delivery available. Amos T. Ebersol, 717/768-3652.

Dairy quality alfalfa 3x3x8 bales, tested, will deliver. \$60-\$85/ton plus delivery. 701-496-3173.

Corn Silage, kernel processed and inoculated. Delivery available. Terms to those who qualify. 304-725-2465.

Alfalfa, Dry Hay & Balage. 3x3 Bales, NAFTA Tested 610-767-1408.

Dairy quality Alfalfa, 3x3x8' bales, 1st, 2nd, 3rd cuttings, tested & stored inside. 608-988-4213

Hay for sale, sound for horses, round bales, big square bales, wrapped balage, 20+ % p. 570-662-2756, 570-398-2688

4X4 Balage, 1st, 2nd, 4th cuttings, Silo King treated. Delivery avail. Union Co. 570/523-9466.

Rolled Corn silage, straw, hay, & balage. Delivery available. 610-932-8999

Good quality ear corn delivered by the trailer load. 814-448-9765.