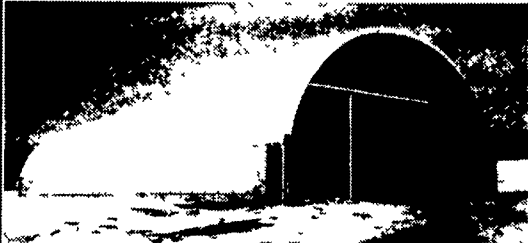


**Alternative Building Systems**



Single arch for smaller models or Truss frame up to 126' wide Pony wall or free standing or curtain style for livestock. Ridge vent available.

Made of tough, durable fabric available in various weights

- 10-15 year pro-rated warranty on fabric
- U V I protected for extra long life
- Galvanized steel arches, 3 year limited warranty
- Can be set on 4' wall for hogs & sheep or 6' pony wall for cattle

A Shelter for all types of livestock, Dairy barns, Calf barns, Feed Storage & Farm equipment storage, Manure pits, Manure yards, Bunk silos, etc Excellent warehousing for industry Temporary Service Areas on Construction Sites

**John Edward Weaver 570/672-2213**

**Miscellaneous Lumber**

Various sizes of beams, rafters, tobacco rails, flooring, doors, hardware, etc. Want to clear out old inventory. Small lots of each. Also white oak beams & floor joists from a log cabin.

**The Barnyard Boys**  
717/529-2629

Pole buildings, storage, pre-fabricated poultry and swine building packages featuring:

**Wheeling Corrugating Company**  
Since 1890

Fast. Economical. Good Looking. Practical.



Wheeling painted, galvanized steel roofing and siding, it's not your grandfather's corrugated Today, it's crisp profiles Handsome colors Unbeatable durability We have it all Right here



Insulation/Finish Board  
**THE INSULATION & INTERIOR FINISH DESIGNED FOR AGRIBUSINESS/RURAL APPLICATIONS**

Sliding door tracks and builders hardware

Authorized Master Distributor Since 1982

**Northeast agri systems** Northeast Agri Systems Inc  
Flyway Business Park 139A West Airport Road Litz, PA 17543 Ph (717) 569 2702  
Delmarva Store 305 University Ave Federalsburg MD (Formerly Long Lumber) 1-800-715-6161  
1-800-673-2580

**UNLIMITED STRUCTURES INC.**  
800-858-7297

**POLE BUILDINGS**  
Horse Barns • Riding Arena  
Equipment Storage  
Garages  
Commercial Buildings



**GRABER SUPPLY**

491 Gap Newport Pike  
Atglen, Pa. 19310

800-964-1550  
610-593-3500

... LOCATION...

20 miles East of Lancaster, PA on Hwy 41  
or 27 miles North of Wilmington, Delaware

**Post & Frame Building Materials  
Metal Roofing Sale**

29 Ga. Choice of Colors ..... \$46.95 Sq.  
Ask About Our Discounted #2 Metal and Liner Panel  
We Also Sell Complete Building Packages With or Without Labor.

- 26 & 29 Gauge
- Window Doors
- Insulation
- Overhead Garage Doors
- Electric Openers
- Trusses



**Heckett MultiServ  
STEEL SLAG AGGREGATE  
EXCELLENT MATERIAL FOR:**

Driveways, Access Roads,  
Equipment Storage Areas,  
Base Applications, and Fill

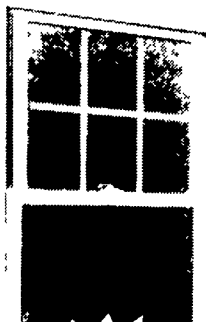
SIZE/Description	LOCATION/PRICE*	
	Coatesville	Steelton
2"x0" - Uncured	\$2.00	\$3.00
2"x0" - Cured	\$3.35	
3"x0" - Uncured		\$3.00
12"x0" - Uncured		\$3.00
2"x4" - Uncured	\$2.85	
Rip Rap	\$1.10	
Screenings	\$3.10	
AntiSkid 1/4"x3/8"		\$5.25
2"x1/4" - Uncured	\$4.35	
Bituminous Sand	\$4.35	

Superior Wear Resistance, Less Subject To Washing & Rutting

Call Heckett MultiServ Sales Dept. At:  
717-939-5522 - Steelton  
610-384-2894 - Coatesville

\* Prices quoted per net ton FOB site listed.  
Steel Slag is not recommended for contained applications (under asphalt or concrete).  
Cash & Carry or Credit Terms Available

**Classic Vinyl Windows**



- Heavy duty welded construction
- Sleek sash provides up to 20% more glass area
- Both sashes tilt in for cleaning
- Custom made to your specifications by:



See Us  
In Harrisburg  
Feb. 26-Mar. 5  
Builder's Show



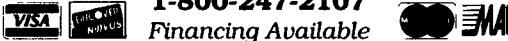
Also Contact:

**SENENIG'S SPOUTING**

for all your spouting needs in 32 colors

265 E. Meadow Valley Rd., Litz, PA 17543  
717-733-7160 • 717-627-6886

1-800-247-2107



**Everlast Roofing, Inc. Metal Roofing & Siding**

**The Ultimate G-100 Process  
"The Best"**

1. Valspar 10S Finish Coat
2. Epoxy Primer
3. Zinc Phosphate Pretreatment
4. G-100 Zinc Coating
5. Full Hard Steel (80,000 min yield)
6. Heat formed, less paint cracks
7. Stronger design, superior strength, more metal per L F

NOTE! It is more important what is under the paint than what you see on top!

- 1 One of the best paints, superior acid rain, cracking resistance and color retention.
2. Primer coat promotes outstanding top coat adhesion
- 3 Zinc phosphate pretreatment. This is a very important process - if your current supplier cannot supply you with this or does not know, you should reconsider.
- 4 G-100 Galvanized Most metal roofing has approx 40% less galvanized under the paint. G-100 is more galvanized than most unpainted panels
- 5 Full Hard Anything less than full hard will bend easier, lower snow loads, etc
- 6 Heat formed Metal is painted before ribs are formed. Most paint cracks at bends, heat forming greatly reduces cracks. (check metal siding that is installed for 5-10 years).
7. Stronger design, superior strength, more metal per L F
- 8 Add Everything Together And Price Should Be \$53 37 Per Square \$1 69 Per L F

**OUR SPECIAL PRICE ONLY  
\$46.74 PER SQUARE  
\$1.48 PER LINEAL FT.**

Questions on any of above - CALL!

**A.B. MARTIN ROOFING**

Metal Roofing & Building Supplies  
150 Slate Road, Ephrata, PA 17522

717-445-6885  
1-800-373-3703

Mon.-Fri. 7 AM-5:30 PM; Sat. 7-11:30 AM

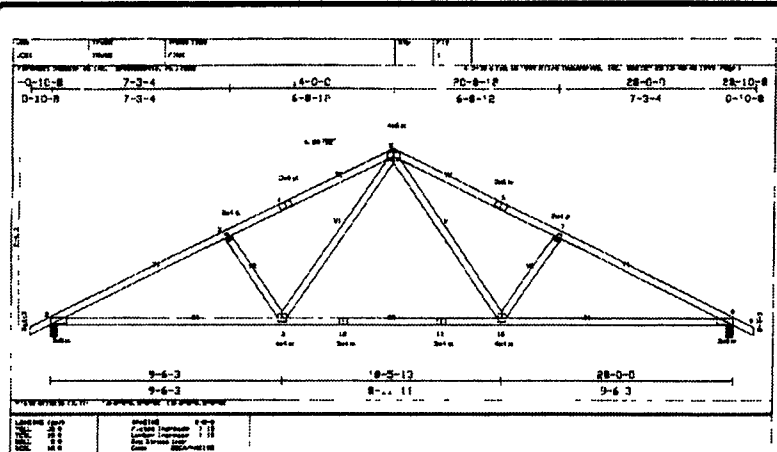
**INCREDIBLE LOW PRICES!!  
SUPER TOUGH STEEL BUILDINGS**

**SAVE UP TO 60%**

- Equipment storage
- Workshops
- Hay and animal shelter

Available models:  
25 x 32 (2 left) 45 x 90 (1 left)  
30 x 44 (3 left) 50 x 100 (2 left)  
40 x 62 (4 left) 55 x 150 (2 left)  
call for other sizes

Factory Direct **800/825-5059**



Are you looking for correctly engineered trusses for your next project, reasonably priced, built with high quality material, state of the art machinery, and \*Delivered on time?

**CALL 1-877-BUILD-FI**

Ask for information on our complete panelized house packages.

**Foremost Industries**  
2375 Buchanan Trail West  
Greencastle, PA 17225

- \*MD
- PA
- VA
- WV