

DON'T IGNORE IT
RESTORE IT!
 Masonry/Restoration specializing in restoring old stone/brick houses and barns. Also doing all types of Stone work.
J&J Restoration
 717-768-0549

A & E ENTERPRISES, INC.
 Specializing in Agricultural & Commercial Buildings

STEEL BUILDINGS & POLE BARNs

MATERIAL PACKAGES TO FULL CONSTRUCTION

SPECIAL PRICING PACKAGES

FREE ESTIMATES!

28 Evergreen Road Phone: (717) 274-3488
 Lebanon, PA 17042 Fax: (717) 274-3781

Top Dollar Paid for Wide Attic Flooring, Barn Grainery Boards, Wide Roof Boards, Big Beams of Chestnut, Heart Pine, White Oak, White Pine, Interior Salvage of Early Stone of Brick House, Indian Doors, Hand-Hewn House Joints and Rafters, Summer Kitchens, Old Factories, Old Warehouses and Log Houses!!!!
(610) 857-1002
 Anytime
 Pay the most & Travel the Farthest

PACIFIC WESTERN OUTDOOR WOOD/ COAL FURNACE
 Stainless Steel
 20 Year Limited Warranty

Dealerships Available
S&R Outdoor Furnaces/Distributor
 Box 233
 Shippensburg, PA
(717) 532-5820

NEED A TREE DUG?

Call **717-354-4740** Will Travel

BARN REMOVAL

Complete - Partial
 Free Estimates
 Will also remove any outbuildings.
J & S Enterprise
 717-865-9757
 John & Sue
 "Prompt, Courteous Service"

Invitation to Bid (Demolition)
 Multi-Story Apartment House in Middletown Area
(717) 944-4920

HORSE BARNS & TURN-OUT SHEDS
 Built on skids so you can move them. Built to your specifications
Elmer Beiler
 137 N. New Holland Rd.
 Gordonville, PA 17529
 717-354-0038

Our Buildings Are Y2K Compliant

All sizes available.
 Call today for **FREE** information.
1-800-331-1875

MUSSER & ASSOCIATES, INC.
 SALES

STEEL BUILDINGS - INEXPENSIVE
 We Build All Year! ESTIMATES FREE
SCORLE
 SPECIAL-24'x30' \$4,900-LTD OFFER * Building Pkgs Available

STEEL BUILDING COMPANIES, LTD. Quality - Not Undersold
 717-564-6886

STEEL BUILDINGS
 Factory Direct Prices
 Industrial - Commercial - Agricultural
 In Stock Metal Building Supplies:
 Girts, Purlins, Sheeting, Etc.

Scenic Ridge Construction
 48 Queen Road
 Gordonville, PA 17529
 Contact Elam or Carl
 Phone: (717) 768-7522
 Fax: (717) 768-8522

GLENWOOD METALS LLC

CUSTOM CUT METAL ROOFING & SIDING

See Us At The Home Builder's Show Harrisburg Feb. 26- Mar. 5

29 gauge - 15 colors Painted, Galvanize & Galvalume

26 gauge commercial - 12 colors Painted & Galvalume

26 Ga. & 24 Ga. Standing Seam Panels

.018 Mill Finish & White Aluminum

Trims - Screws - Nails to match colors

265 E. Meadow Valley Rd., Lititz, PA 17543
 717-626-9674
 800-582-9956
 717-627-6892 - Fax

Everlast fits tighter.

Screws and nails fit tighter on Everlast II metal roofing and siding ribs. Less risk of leaking. Laps are virtually invisible. No other manufacturer's metal seals so well with nails.

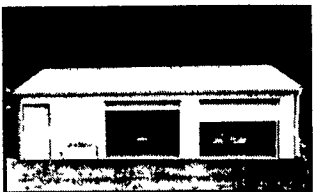
Everlast Roofing, Inc., 239 N. 5th Ave., Lebanon, PA 17046,
 Call toll free 1-888-339-0059 for info. & nearest dealer.
 (Mid-Atlantic, New England, Ohio)

Compare the Savings...

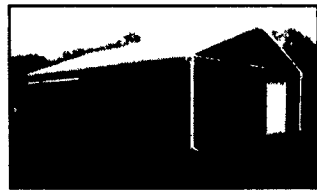
Winter Specials on Custom Pole Buildings!



24x24x8 \$5,500
 -(1) 3'x6'8" six panel entry door
 -(1) 16'x7' insulated raised panel overhead door



28X32x10 \$7,650
 -(1) 3'x6'8" six panel entry door
 -(2) 9'x8' insulated raised panel overhead doors



40X60x12 \$16,000
 -(1) 3'x6'8" six panel entry door
 -(1) 12'x10' overhead door
 -(1) 12'x11' sliding door



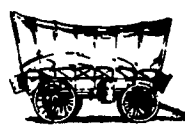
50x96x14 \$27,200
 -(1) 3'x6'8" six panel entry door
 -(1) 20'x14' split sliding door

COMPARE OUR SAVINGS - OUR PRICES INCLUDE MATERIALS, LABOR, DELIVERY, APPLICABLE TAXES AND DESIGN PLANS. CALL TODAY - FREE ESTIMATES AND BROCHURES, WITH FINANCING AVAILABLE!

- Custom pole buildings - residential, agricultural, commercial, & equine
- Company-owned construction crews
- Maintenance-free painted steel with 25 year warranty - your choice of color on roof, sides, and trim!

Visit our web-site today!

www.conestogabuildings.com



CONESTOGA Buildings

202 Orlan Road, New Holland, PA 17557
1-800-544-9464