

FARM EQUIPMENT

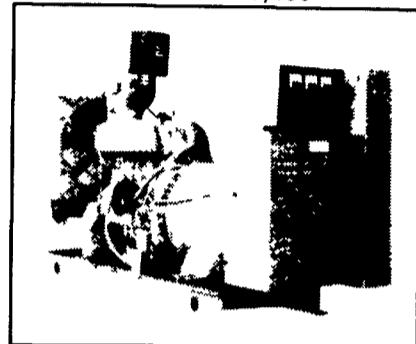
STANDBY POWER FOR YOUR FARM, CONFINEMENT OPERATION, DAIRY, GREENHOUSE, HOME, OR IN THE FIELD



HAS THE POWER

The Leader In Automatic Farm Power Systems

John Deere Powered Generators	G.M. Powered - LP or NG
40 KW \$ 9,390	25 KW \$ 8,260
50 KW 10,500	35 KW 9,250
60 KW 11,400	55 KW 11,750
70 KW 12,100	70 KW 12,800
85 KW 13,750	85 KW 15,700
105 KW 14,500	100 KW 16,050
125 KW 16,400	



DISTRIBUTOR FOR NY, NJ & PA
WALLIS GENERATORS
Since 1972
800/231-2968

VORTEX

Liquid Manure Pumps

Triple Seal & Timken Roller Bearing Assembly



- Stationary Mount
- 2 Point Hookup Model
- Trailer Model
- Variable Depth Model

You'll appreciate the performance... and the price!

K.W. MARTIN
Lititz, PA
717-738-2584

LADDER		DUO-GRIP	
TIRE SIZE	PRICE/PAIR	TIRE SIZE	PRICE/PAIR
11.2-24, 9.5-28	112.00	9.5-24, 9.5-28	162.37
11.2-28, 9.5-32	127.92	11.2-28, 355/80-20	187.79
12.4-28	154.51	11.2-32, 12.4-28	195.89
13.6-16	116.22	13.6-24, 13.6-26	205.79
13.6-28, 14.9-24	162.37	14.9-24	
14.9-26, 14.9-28	172.32	14.9-26	229.91
16.9-24, 17.35/24	181.22	14.9-28, 14.9-30	257.40
16.9-28, 14.9-30	183.11	14.9-38, 15.5-38	307.78
16.9-30	201.76	16.9-24	241.22
16.9-34, 15.5-38	215.48	16.9-26, 16.9-28	224.32
21.5-16	233.94	16.9-30, 16.9-32	275.21
18.4-24, 19.5-24	251.36	17.5L-24	203.45
18.4-34	306.35	18.4-24, 19.5/24	273.33
18.4-38	325.59	16.9-34	298.87
20.8-38	400.08	16.9-38, 18.4-38	334.82
23.1-34, 24.5-32	487.18	18.4-34	335.92
18.4-42, 14.9-46	411.32	20.8-38, 20.8-42	439.21

800-417-1314 www.tirechains.com
Shipped UPS
South Fork Hardware, South Fork, PA 15956



'98 JD 7410 C, H, A, MFWD, 1100 Hrs.,
w/warranty, duals available
\$49,900
No Sunday Calls (215) 541-9060

SEE MAP BELOW

GUNTHER HEUSSSMAN INC.

4801 S. 5TH ST., EMMAUS, PA 18049 610-965-5203

Delivery & Financing Available

WE ARE CASH BUYERS FOR CLEAN, LATE MODEL FARM EQUIPMENT

QUALITY TRACTORS

(Displayed In Heated Building)

- 1993 JD 4760 Cab, Air, MFD, 15 Speed Power Shift, 18x46 Duals, Triple Remotes, Radar, 1800 1-Owner Hrs., Exc. Cond.
- 1997 JD 6400 Cab, Air, Power Quad, w/Creeper, 580 Hrs., Triple Hyd., Excel. Cond.
- 1997 JD 5300 4x4 w/Reverser, Triple Hydraulics, 540 Loader, 200 1-Owner Hrs., Like New
- 1990 JD 4955, Cab, Air, Power Shift, MFD, 4000 Hrs., Triple Remotes, 18x42 Duals
- JD 4650 Cab, Air, 15 Speed Power Shift, MFD, 3000 1-Owner Hrs., Excel. Cond.
- JD 4050 Cab, Air, 15 Spd., Power Shift, 4x4, 2900 Hrs., Very Nice
- JD 4240 Cab, Air, Quad, 3800 Hrs., Good Cond.
- 1977 JD 4230 Cab, Air, Quad, Triple Remotes, New Engine, Good Cond.
- JD 4250 Cab, Air, 15 Speed Power Shift, MFD, 4000 Hrs., Very Nice
- JD 4320 w/Year Round Cab, 5400 Hrs., Dual Hyd., 18x38 Tires, V. Nice
- JD 4040 Cab, Air, Power Shift, Good Cond.
- JD 2955 Cab, Air, Hi-Lo, 38" Rubber, 2600 Hrs., Exc. Cond.
- JD 2955 MFD Hi-Lo, Dual Hyd., w/Hinker Cab, Very Nice
- JD 2950 Cab, Air, Hi-Lo, Dual Hyd., 3200 Hrs., Excel. Cond.
- JD 2755 Cab, Air, Dual Hyd., Rack & Pinion, 3800 Hrs., Good Cond.
- JD 2750 Cab, Air, Hi-Lo, 15x38 Rack & Pinion, 2100 Hrs., Exc. Cond.
- JD 2350 Cab, Air, Hi-Lo, 3400 Hrs., Very Nice
- JD 2355 Open Station, 4x4, Hi-Lo, 1900 Hrs. w/245 Loader, Excel. Cond.
- JD 3020 Diesel, Side Console, WF, Syncro Range, Good Cond.
- JD 1520 Diesel, 3 Pt., Good Cond.
- Case IH 585 XL Cab, Air, 890 Hrs., Like New
- 1976 IH 1066 Black Stripe, Cab, Air, 2800 Hrs., Ex. Cond.
- IH 966 Black Stripe, Fender, 3000 Hrs., Exc. Cond.
- 1975 IH 1066 Cab, Air, 3500 1-Owner Hrs., Very Nice
- 1980 IH 1086, Cab, Air, 2800 Hrs., Excel. Cond.
- IH 1486 Cab, Air, 3800 Hrs. SOLD PTO, Recent Engine
- IH 1486 Red Power, Cab, Air, Dual PTO, Good Cond.
- IH 1086 Red Power, Cab, Air, Good Cond.
- IH 1086 Cab, Air, 3100 1-Owner Hrs., Very Nice
- IH 986 Cab, Air, New T/A, Good Cond.
- IH 856 Diesel, 3 Pt., Dual Hyd. & PTO, 38" Rubber, V. Nice
- IH 1256 Diesel, 3 Pt., Dual Hyd. & PTO 38" Rubber, Very Nice

HIGH QUALITY CORN AND GRAIN HEADS

- JD 922 Flex Head w/Fore & Aft, Late Model
- JD 915 Flex Head, Fore & Aft, Speed Control
- JD 913 Flex Head
- JD 215 Flex Heads
- JD 213 Flex Heads
- JD 13' Rigid Head
- MF 9115 Flex Head
- MF 1859 13' Flex Head
- JD 493 4RN, Like New
- JD 643 6RN, Oil Bath
- JD 444 4RW Oil Bath
- JD 444 4RW, Hi Tin
- JD 443 4RN, Oil Bath
- JD 443 4RN, Hi Tin
- JD 343, 344, 243
- 1994 Case IH 1020, 15' Flex, Excellent
- Case IH 1063, 6RN
- Case IH 1043 4RN
- IH 943, 4RN
- AC 438 4RW
- MF 1163 6RN

MISCELLANEOUS EQUIPMENT

- Case IH #60, 15' Stalk Shredder, Good Cond.
- Ford NH 355 Grinder Mixer, Hyd. Drive w/Scales, Long Unloading Auger, Excel. Cond.
- Ford Heavy Duty Hyd. Angle, 3 Pt. Blade
- Cabs to Fit IH 1066, 856, 1256, Good Cond.
- Summers Hyd. Reel Rock Picker, Good Cond.
- JD 175-240 Loaders
- Bush Hog 3425 Quick Attach Loader to Fit Case IH Maxxum, Like New
- Crown Hyd. Reel Rock Picker, Good Cond.
- Axle Mount 18x38 Duals For JD 4450, 4440, 4430, Case IH 5240, 1066, 1086, 986, 1486
- Gehl 100 Grinder Mixer, Hyd. Drive, Good Cond.
- Leon Rock Picker, Good Cond.
- Myers 8' Hyd. Angle Snow Plow to Fit Loaders
- IH 2350 Quick Attach to SOLD thru 1486

PLANTING EQUIPMENT

- JD 1750 4R Conservation Planter, Dry Fert, Frame Mounted Coulters, Insecticide Monitor, Like New
- JD 7200 4R Conservation, Dry Fert., Frame Mounted Coulters, Insecticide, Monitor, Markers, Like New Cond.
- JD 7200 4R Vacuum, Dry Fert., Insecticide, Monitor, Very Nice
- JD 7200 4R Conservation, Vacuum, Dry Fert., Markers, Very Nice
- JD 7000 4RW Dry Fert., Insecticide, Monitor, Good Cond.
- JD 7000 4RW Dry Fert, SOLD, Good Cond.
- JD 7000 6R Conservation, Dry or Liquid Fert., No-Till Coulters, Insecticide, Monitor, Good Cond.
- JD 7000 4RN, Dry Fert., Insecticide, No-Till Coulters, Very Nice
- JD 8300 Grain Drill, 23x7, Grass Seed, Press Wheels, Good Cond.
- JD 7000 6R Dry Fert., Insecticide Monitor, Good Cond.
- JD 750 10' No-Till Drill w/Dolly Wheels, Excel. Cond.
- Liquid Fertilizer Attachment To Fit JD 7000 Corn Planters
- Brillion 10' Transport Grass, SOLD, Double Boxes, Exc.

CORN PICKERS

- JD 300 Husker w/2 or 3 Row Head, Very Nice
- NI 324 2RW, 12 Roll Bed, Late Model, Like New
- NI 325 2RN, 8 Roll Bed, Good Cond.
- NI 325, 2RN, 12 Roll Bed, Late Model, V. Nice

TILLAGE

- IH 720 6x18 Spring Reset on Land
- IH 710 5 & 6x18 Spring Reset on Land
- IH 710 4x16 Spring Reset Hillside Hitch
- IH 720 5x18 Spring Reset Hillside Hitch
- IH 720 5x16 Toggle Trip
- IH 710 5x18 Spring Reset
- IH 710 4x18 Spring Reset, Hillside Hitch
- White 508 4x18 Spring Reset
- White 598 4 Base Spring Reset, Variable Width
- IH 5500 3 pt. 12' Chisel Plow
- Case IH 6500 9 Shank Conserve Till, Like New
- Athens 10' Heavy Duty Offset Disc
- JD 950 10' Roller Harrow, Good Cond.
- JD 1610, 11 Shank, 3 Pt. Chisel Plow
- IH 490, 19' Hyd, Fold Disc, Good Cond.
- Krause 9 Shank Conser Till, Good Cond.
- JD 215, 14' Dura Cushion Disc, Good Cond.

FEBRUARY HAY SPECIALS

NH 1063 Pull Type Bale Wagon, SOLD, Capacity	\$10,800
NH 1037 Bale Wagon, 105 Bale Capacity (Exc. Cond.)	\$10,800
NH 1033 Stack Wagon, 105 Bale Capacity (Good Cond.)	\$5,650
JD 3950 Harvester, Elec. Control., Long Tongue (Very Good)	\$6,500
JD 435 Round Baler, Net Wrap, Baler, SOLD, Packer Wheels	\$11,800
JD 335 Round Baler (Exc. Cond.)	\$7,850
Ford NH 853 Round Baler w/Fast Net, Bale Command (Good Cond.)	\$6,850
NH 848 Round Baler w/Bale Command (Good Cond.)	\$5,650
NH 847 Round Baler (Very Nice)	\$3,750
JD 348 Baler w/Quarter Turn Chute	\$8,250
JD 337 Baler w/30 Ejector	\$5,850
JD 1508 15' Wing Fold Rotary Mow, SOLD	\$3,850
NH 477, 7' Haybine	\$2,450
JD 343 Corn Head w/Chopper Mounting Plate	\$2,450
NH 310 Baler w/Thrower (Exc. Cond.)	\$3,850
JD 1360, 9 1/2' Mo-Co Discbine, Good Cond.	\$6,850

QUALITY COMBINES

(Displayed Inside Building)

- 1992 JD 9500 Side Hill, Dial Speed, Fore & Aft, Chopper, Good Cond.
- 1992 JD 9400, 1000 Hrs., Chopper, 24x32 Tires, Excel. Cond.
- 1982 JD 6620, Cab, Air, Hydro, 2,100 Hrs., Excel. Cond.
- 1978 JD 6600 Diesel, Hydro, Cab, Air, Chopper, 2500 Hrs., Very Nice
- JD 4420 Cab, Air, 23" Rubber, Chopper, Excel. Cond.
- 1985 MF 850 Diesel, Cab, Air, Hydro, 1900 Hrs., Ex. Cond.

