

Middleburg Livestock

Middleburg, Pa.
February 15, 2000

Report Supplied By PDA

CATTLE 425 [PDA] Compared with last week's sale .sl steers 2.00 lower except Holsteins were steady, sl. cows steady 2.00 to 3.00 lower, sl heifers 2.00 lower, sl bulls 2.00 to 3.00 lower

SLAUGHTER STEERS few High Choice and Prime 2-4 1335-1440 lbs 70.00-70.50, Choice 2-3 1145-1475 lbs 66.25-70.25, Select 1-3 60.00-67.75, Standard 1-2 45.25-57.50

HOLSTEINS High Choice and Prime 2-3 1270-1510 lbs 62.50-64.50, Choice 2-3 1215-1630 lbs 60.50-62.75, Select 1-2 53.50-57.50

HEIFERS Choice 2-4 1100-1490 lbs 65.25-70.25, Select 1-3 59.00-67.50, Standard 1-2 46.75-57.75

COWS Breakers 75-80% lean 38.00-41.00, few to 44.50, low dressing down to 35.00, Boners 80-85% lean 34.00-40.00, Lean 85-90% lean 27.00-37.00 Shells down to 20.00

BULLOCKS couple Select 1-3 50.50 & 53.00

FEEDER CATTLE STEERS few Medium and Large 1 410-610 lbs 73.00-77.00, Large 2 315-495 lbs 64.00-71.00, 550-590 lbs 55.00-56.00, HEIFERS Medium and Large 1 330-490 lbs 71.50-76.00, 600-650 lbs 59.00-62.00, Medium and Large 2 600-800 lbs 41.00-60.00, **BULLS** Medium and Large 1 435-525 lbs 76.50-93.50, 780-860 lbs 53.00-56.50, few Medium and Large 2 435-895 lbs 44.00-49.00

CALVES 186 **VEALERS** Standard and Good 80-130 lbs 23.00-36.00, Utility 60-90 lbs 10.00-21.00

FARM CALVES: Holstein bulls uneven, 5.00 lower to 10.00 higher No 1 Holstein bulls 90-120 lbs 125.00-160.00, 80-90 lbs 100.00-130.00, No 2 80-120 lbs 50.00-137.00, No 1 Holstein heifers 90-115 lbs 215.00-290.00, No 2 60-110 lbs 110.00-200.00

HOGS 231... (02/14 & 15/01).. Bulk of supply sold on Monday and reported by the auction Barrows and gilts 1.00 lower, sows unevenly steady

BARROWS AND GILTS 49-54% lean 230-275 lbs 39.75-42.75, one lot 43.25, 45-50% lean 225-270 lbs 37.00-39.25, 40-45% lean 280-355 lbs 28.50-38.25

SOWS US 1-3 300-475 lbs 28.50-38.25, 500-600 lbs 37.00-41.00, Medium 250-460 lbs 11.00-25.00, few down to 6.00

BOARS 490-660 lbs 6.50-10.75, 195-300 lbs 17.00-20.25

FEEDER PIGS 76 US 1-3 30-45 lbs 28.00-36.00 --- per head

SHEEP 21 **SLAUGHTER LAMBS** Choice 75-110 lbs 83.00-94.00, couple 120 lbs 75.00

NEW CROP LAMBS 25-40 lbs 104.00-167.50

SLAUGHTER SHEEP 34.00-49.00

GOATS 29 Large Billies 102.50-137.50, couple Medium 64.00-87.50, Large Nannies 54.00-92.50, few Medium 68.00-72.00, Large Kids 26.00-36.00, couple Small 24.00 & 27.00 --- per head

with last week's sale...sl. cows 2.00 to 4.00 lower. **STEERS:** One Select 58.75 **HOLSTEIN STEERS:** couple Choice 2-3 1340 & 1355 lbs 57.50 + 59.75 **HEIFERS** one Standard 1 56.00.

SLAUGHTER COWS Breakers 75-80% lean 36.00-40.25, Boners 80-85% lean 34.50-38.00, Lean 85-90% lean 30.00-35.50 Shells down to 20.00.

BULLS One Yield Grade 1 1960 lbs @ 43.00, few Yield Grade 2 1305-1760 lbs 42.00-45.25

FEEDER CATTLE STEERS HEIFERS. few Medium 1-2 420-695 lbs 58.00-68.00

CALVES 112 **VEALERS** Standard and Good 80-110 lbs 20.00-32.50, Utility 60-75 lbs 10.00-15.00

FARM CALVES No 1 Holstein bulls 120-125 lbs 130.00-135.00, 95-115 lbs 142.00-155.00, 80-90 lbs 80.00-120.00, No 2 90-1215 lbs 80.00-115.00, few No 1 Holstein heifers 90-115 lbs 315.00-330.00, No 2 80-110 lbs 180.00-250.00

Beef type bulls and heifers 85-100 lbs 80.00-100.00



New Wilmington Livestock

New Wilmington, Pa.
February 14, 2000

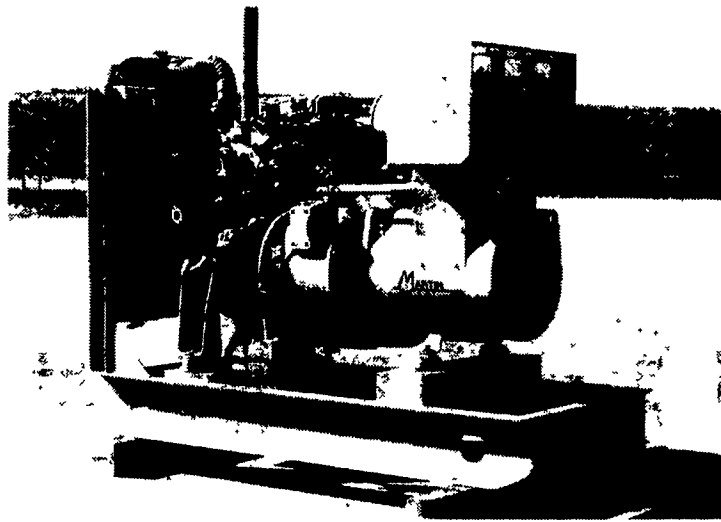
Report Supplied By PDA

CATTLE 100 [PDA] Compared

BUY,
SELL,
TRADE
OR
RENT
THROUGH
THE
CLASSIFIED
ADS
IN

Lancaster
Farming

PHONE
717-626-1164
OR
717-394-3047
FAX
717-733-6058
Mon., Tues.,
Wed., Fri.
8 AM to 5 PM
Thurs.
7 AM to 5 PM



GENERATORS

Sales ★ Service ★ Rentals
Complete Generator Systems
PTO • Portables • 2-1600 KW
We Service It If You Have It,
And Sell It If You Need It.



**MARTIN
MACHINERY**

34 W. Mohler Church Rd.
Ephrata, PA 17522

Tel: 717-738-0300
Fax: 717-738-4329

Attention Dairymen!

- ★ Reduce SCC
- ★ Improve milk quality
- ★ Increase profits & bonuses
- ★ Keep lines clean
- ★ Reduce cleaning compounds

Millers Water Works
1-800-991-9188

**JOHN THOMPSON
GOLF COURSE DESIGN
AND CONSTRUCTION
SHAPING SERVICES**

** NORTHEAST **
610/933-0991

PAINT-TECH, INC.

Brush & Spray Painting • Sandblasting •
Roof Coats • Waterproofing & Repairs

(717)
733-3757

Commercial,
Industrial,
Churches & Farms



Contractors:
110' Ladder
Truck For Hire
We Change Light Bulbs

Do you know how people
are always looking to make
more money?
At Erie Enterprises we show
you how.

Call
888-893-7663

**YOU CAN
PRODUCE MORE MILK
BY SUPPLYING MORE WATER**

**CONCRETE
Problems?
Ritchie Solutions.**

**54" and 90"
Units Available**

Rugged Construction

The WaterMaster from Ritchie is built for long life...and we'll guarantee it for 10 years.

Dependable, Economical Water Delivery

Sealed urethane foam insulation protects water from cold, allowing the unit to operate longer before the constant flow is turned on, creating a reduction in water waste.

Easier to Maintain

WaterMaster fits over an existing stem wall and unlike concrete is lightweight and easy to install. Built-in over-flow and drain eliminates troublesome standpipes.

Durability, easy maintenance and reliability - with less water waste. All backed by 75 years of dependable service. Guaranteed. Just ask a user, then...

Buy A Ritchie
And Relax...
Your Water's
Worth It!



ASK ABOUT OUR
MANY MODELS IN
STOCK!
ELECTRIC OR
ENERGY-FREE

DISCOVER

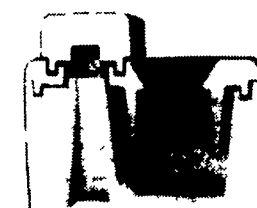
Real Versatility...

An Electric-Free Fountain
from Ritchie

Our unique disc-shaped closure could make the Ritchie Thrifty King the most versatile fountain on the market. Unlike a ball closure, our disc "tips" the higher water level means livestock don't have to lean in so far to drink. That makes drinking easier for smaller amounts animals and with our tapered opening, it's easier for larger animals too. Water both from the same unit.

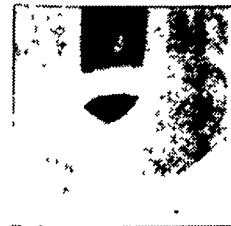
Buy a Ritchie and Relax...
Your Water's Worth It!

Ritchie
Ritchie Industries, Inc



Introducing the all new

**Ritchie
WaterMaster
72/144**



A rotocast polyethylene body features thick urethane insulation. Each 72" unit has 6 recessed heavy web anchors



The 144" model holds a maximum of 52 gallons of water and will flush/drain clean in 60 seconds! Large 3" drains are located at each end. The complete fountain will fill in 78 seconds at 50 PSI. A single 72" model will water 125 head of dairy stock or 250 head of beef cattle. These capacities double with the 144" model.

**RYDER SUPPLY
CO.**

539 Falling Spring Road
P.O. Box 219
Chambersburg, PA 17201-0219
Phone 717-263-9111