

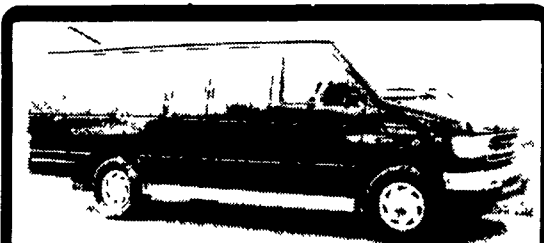


**1989 Chevy Truck**  
350 Eng., 4x4, 550 Gal. S.S. Tank, 40' Hydraulic Booms, Foam Marker, Wash Out Tank, Creek Fill Pump, Single or Dual Wheels, Mileage 60,000 mi. Raven Controller & Radar Gun  
**717-687-6535**

1986 IH service truck, 6000# crane, air compressor, 25,000 GVW, v.good cond. \$19,500 neg. 610-356-0217

1981 GMC Brigadeer, tandem axle tractor, 300 big cam Cummins road ranger transmission low mileage, A/C, P/S \$5,500  
1990 International 8300 series, single axle, air ride, 350 Cummins, road ranger transmission, A/C, P/S \$8,000

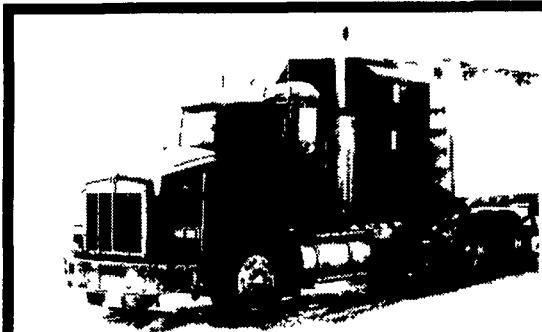
**(717) 354-9560**



**97 FORD E350 SUPER CLUB WAGON**  
V10, PW, PI, Privacy Glass, Black, 79,000 Mi. Dual AC & Heat, Cassette

**\$13,500**

**717-867-4995**



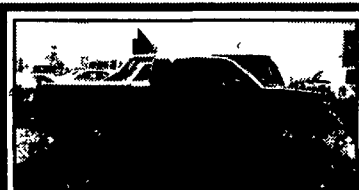
**1992 KWT 800, 3406, 425 HP Jake, 15 Speed, Air Ride, Wet Line, 11x24.5 Rubber**  
**\$22,500 - (717) 733-7226**

# New Holland Moove Out The Live Stock!



**It Doesn't Matter If You Push, Pull, Pile Or Pound... New Holland Ford Has The Best Prices Around! Right Out Of The Gate You Can Graze On Acres Of Selection!**

**Remember That New Holland Ford Is THE Truck Dealer—No One Offers A Lower Bottom Line Than The Simple, Straightforward Folks At New Holland!**



**1997 DODGE 1500 SUPERCAB**

V8 Engine • Auto Trans • Air Cond Power Steering/Brakes • Cassette Super Clean! #HD246B

A Lot Of Truck For Only:

**\$12,900**



**1987 FORD LN 800**

20' Aluminum Hay Body • Diesel Engine 5-speed/2-speed • Power Steering Air Brakes! #HD219A

Runs Great! Now Only:

**\$13,900**



**2000 FORD E-250 HD CARGO VAN**

5.4 Ltr V8 Engine • Auto Trans w/ O/D AM/FM Radio • Air Cond • 8600# GVW Glass - Side & Rear #F153

Work Bins Included!

**\$22,848**



**1997 DODGE RAM 2500 4x4**

Club Cab • SLT • Laramie • 360 V8 Air Cond • Power Windows & Locks Cruise • Tilt • 24k Miles! #HD280A

None Nicer! Only:

**\$22,987**

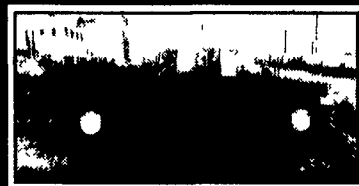


**BRAND NEW 2000 FORD F-150 4x4 SUPERCAB**

5.4L V8 Engine • Auto Trans w/ O/D Air Cond • AM/FM Cassette #F388

Save Over \$2760 From MSRP!

**\$23,991**

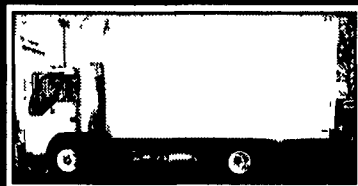


**BRAND NEW 2000 FORD F-350 CREW CAB SRW**

7.3 Ltr Turbo Diesel • 6-Speed Trans 8800# GVWR • Trailer Tow Pkg Trailer Hitch • XL Trim #HD250

Save Over \$2560!

**\$26,939**



**BRAND NEW 2000 ISUZU NPR 14' VAN BODY**

142 HP Diesel Engine • 5-Spd Trans Air Conditioning • Stereo w/ Cass #4043

Save Over \$7410 From MSRP!

**\$27,996**



**BRAND NEW 1999 FORD F-450 CHASSIS CAB**

V8 Engine • Power Stroke Diesel 6-Spd Trans • Air Cond • Pwr Strg/Brks AM/FM Stereo! #HD175

Save Over \$2700 From MSRP!

**\$28,899**



**BRAND NEW 2000 FORD F-550 CHASSIS CAB**

7.3L Diesel Engine • 6-Speed Trans XLT Trm • Cab Steps • Spare Tire & Wheel #HD235

Save Over \$4150 From MSRP!

**\$29,894**



**BRAND NEW 2000 FORD F-550 12' EBY DUMP BODY**

4x4 • 7.3 Diesel Engine • 6-Speed Trans • 17,500# GVW • Air Cond Ready to work! #F7

Ideal For Landscaper!

**\$41,946**

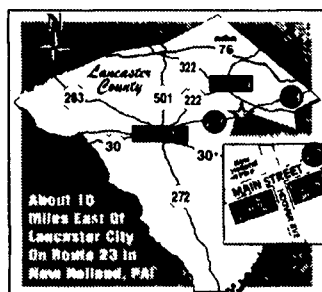
**TOUGH TRUCKS... EASY DEALS!**

**Credit Available!**

We know there are many people that believe they don't have good enough credit to purchase a new car. If you have been denied credit before or have had late payments, we can help!

Call Mike Conners at (717) 354-4901 today and we'll help you purchase your new car.

# New Holland



**508 W. Main St. (Route 23) New Holland**  
**Call 717-354-4901 or 1-800-642-8605**

All prices on new trucks include any factory rebates (including Ford's commercial rebate), if applicable. Tax, tags and license fees additional.