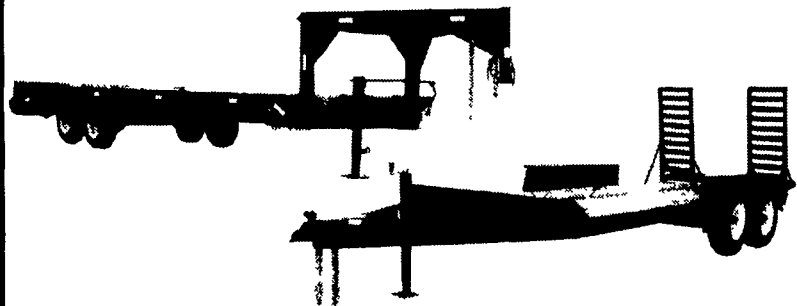


NEED A TRAILER AND WANT TO KEEP YOUR COST DOWN? SEE BINKLEY & HURST BROS. AND CHOOSE A USED OR DEMO TRAILER NOW!



- 1 (UM 4246) Used Eager Beaver 10 HA Trailer, 10 Ton, Air Brakes with Beaver Tail, 1995 **Only \$5,800**
- 1. Approx. One Year Old 1600 lb. GVW Gooseneck McElrath Trailer, 20' Flat Deck Plus 5' Beaver Tail and Ramps with 215/75R17.5 Radial 16 Ply Tires, Tandem Axle, Spare Tire Included..... **\$6,500**
- 2. (UM 4330) 10-Ton Tilt Top, 25,700 GVWR, Dual Wheel Tandem Axle with 8.75R16.5 LT Radial Tires, Approx. 50% Tread, 20 Foot Deck..... **Only \$4,750**
- 3. (UM 3885) Pro Tow 10,000 Lb. GVW Skid Steer Type Trailer with 2-5/16" Ball Hitch, 16' Deck with Slide-In Ramp Feature with Conduit Protected Wiring Harness, Inside Fender Width 79", with 2.25-15 8 Ply Radial Tire..... **\$2,680**
- 5. (NE 5487) New 1998 Demonstrator Pro Tow Low Profile 10,000 GVW Skid Loader Type Trailer with 77" Inside Fender Width, 2-5/16" Ball Hitch, 16' Deck with Slide In Ramp Feature, Conduit Protected Wiring Harness System, 2.25-15 8 Ply Radial Tires..... **Demo Disc Price \$2,980**

BINKLEY & HURST BROS. INC. 133 Rothsville Station Rd. P.O. Box 0395 Lititz, PA 17543-0395 (717) 626-4705 1-800-414-4705
 Fax 717-626-0996 www.binkleyhurst.com

WHITMOYER

FORD • MERCURY
YOUR FARM & PERSONAL TRUCK HEADQUARTERS

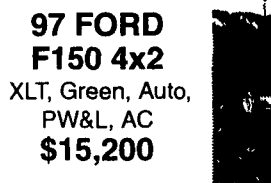
96 CHEVY S10 BLAZER
 Dark Green, PW & L, Auto, Cassette
\$12,400



98 DODGE DURANGO SLT
 Chestnut, PW&L, Cruise, CD, Local 1 Owner

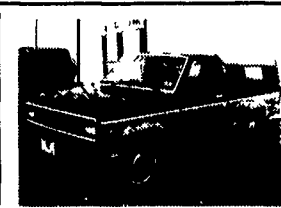


94 FORD F150 XLT
 Black, Auto, AC, PW & L
\$11,500



97 FORD F150 4x2
 XLT, Green, Auto, PW&L, AC
\$15,200

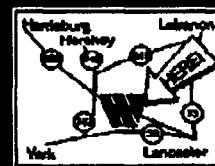
97 FORD F150 4x4
 Super Cab XLT, Black & Silver, V-8, AC, 5 Speed, PW & L
\$20,500



86 FORD RANGER
 5 Speed, Cap - February Special
\$1,995

Call for details... we probably have what you are looking for.

Whitmoyer
 FORD • MERCURY
 Rt. 283 & Rheems/El-town Exit • Elizabethtown
 Sales Hrs: M-F 8:30 am - 9 pm • Sat. 9 am - 5 pm
717-367-7022 or 1-800-267-2088
 e-mail us at: whitmoyerford@aol.com



ALL STAR

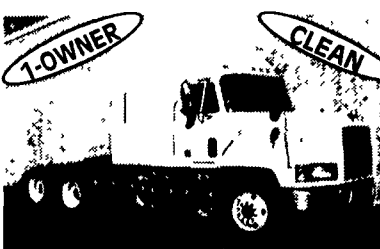
New & Used Trucks



1988 MACK R-MODEL
 E6-350, T-2090, 9- Spd., Camelback Suspension, 4:42 Ratio, 11R22.5 Tires, Steel Disc Wheels



1995 MACK CH613
 EM7-300, T2060-6 Spd., 38,000 lb. - Camelback, 187 inch WB, 288,505 miles

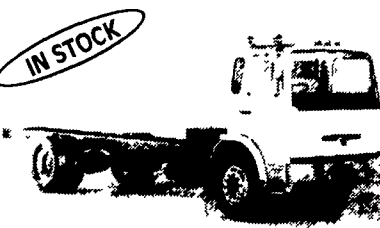


2000 MACK CX SLEEPER & 2000 MACK CH DAY CB IN STOCK

Includes 200,000 Mile Engine Warranty, All Trucks Have Been Run on Dyno.
 20 -1995 E7-350 RTLO14610B 10 Spds., DS404 - 3.9OR on Air, Steel Disc Hub Pilot, 295/75R 22 5 192 WB, 42" Highrise, 440,000 Miles



(2) 2000 MACK RD688S
 E7-427 & E7-350, RTOF-14908LL, 18 Front, 44 Rear Axles, 265 inch W.B.



2000 MACK MS250P
 Chassis, E3-190, 4106A-6 Spd., 12 Front, 21 Rear Axle, 217 WB



1999 MACK CL713
 E7-460, 13 Spd., SS440, Spring Suspension, 17 5' Steel Dump Body

LESHER Mack SALES & SERVICE
 2700 Cumberland Sts. Lebanon, Pa. 17042 (Route 422 West) **717-273-4535**

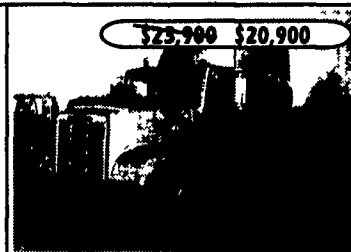
These Trucks Must Go - NOW BLOW-OUT PRICES



1995 MITSUBISHI FH100, 6 Cyl Turbo, Allison AT, 17,200 GVW, 100,000 Miles, 16 Ft Van w/Ramp
~~\$20,500~~ **\$18,900**



1993 FORD LTA 9000, 3406C 350 HP 52,000 GVW, Air Ride, 255,355 Miles, Air Slide 5th Wheel, Red
~~\$21,900~~ **\$19,900**



1992 FREIGHTLINER FLD120, Det 12 7 355-400 HP, 9 Speed, 52,000 GVW, Air Ride Susp, 786,523 Miles, 228" WB, 3-Stage Jake, 60" Flat Top
~~\$25,900~~ **\$20,900**



1995 IHC 4900, DT466-195 HP, 5-Speed, 25,500 GVW, Air Suspension, 120,000 Miles, A/C, P/S, White, 26 Ft Morgan Body w/Side Door & 2 Rows of E-Track
~~\$24,900~~ **\$24,900**



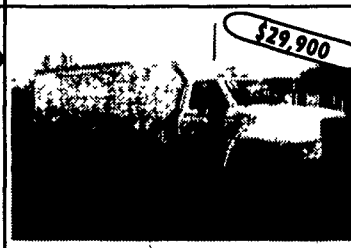
1995 FORD F450, 7 3 Power Stroke Diesel, 5 Speed, O.D., 15,000 GVW, 202,030 Miles, 161" WB, 84 C A, A/C, Blue
~~\$12,900~~ **\$12,900**



1987 FORD F800, 4V Engine, 5/2 Trans., 29,900 GVW, 135,851 Miles, Hyd Brakes, Red
~~\$11,900~~ **\$11,900**



1992 FORD F450, 7 3 185 Engine, 5 Spd., O.D., 15,000 GVW, 254,738 Miles 161" WB, 84 C A
~~\$8,900~~ **\$8,900**



1998 FORD F800, HOT SHOT, 5 9 190 HP, 6 Speed, 26,000 GVW, 40,000 Miles, 237" WB, A/C, 36" Bunk
~~\$29,900~~ **\$29,900**



1987 FORD LTS 9000, Cummins 855 350 HP, 8LL Trans, 73,280 GCWR, Hendrickson Suspension, 371,400 Miles, 167" WB, Air Slide 5th Wheel
~~\$15,900~~ **\$15,900**

KEYSTONE TRUCK SALES
 470 Penhar Rd., I-83 at 322 East, P.O. Box 4194, Harrisburg, PA 17111
 Sales Dept. Hours: Monday-Friday 8 am to 5:30 pm



1991 FORD LA9000, L10 260 HP, 9 Speed Trans, 34,700 GVW 416 887 Miles C A -84 A/C, Custom Interior
~~\$17,900~~ **\$17,900**

(717) 564-6661 or (800) 669-6235