

1977 Int C/O wetline, w/  
1976 Shroder 28' alum  
dump trailer, \$14,000.  
717-527-2822.

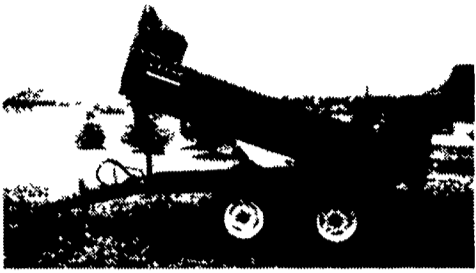
1988 Int Tractor 8300,  
3022,000 Mi. P.L. Rohrer  
717-299-2571

**TRUCKERS**

27' HD RATCHETS.....\$13.95  
WINCH STRAPS.....\$12.95  
RUBBER T. STRAPS......54¢  
REFLEXITE RED/WHITE TAPE.....82¢/Ft.  
TIRONIE TARPS  
(800) 874-2928 • FAX: (570) 584-3127

**FARM DUMP TRAILERS**

(Direct from the Manufacturer)

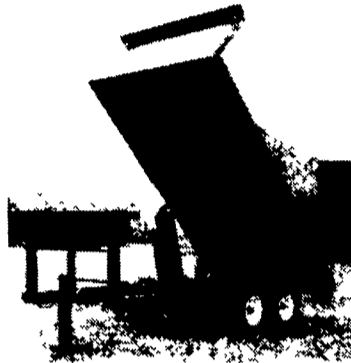


**6-Ton Dump Trailer**

- 10 ft x 7 ft.
- Floating Tandem Axle
- 3 ft. Front, 3 ft. Tailgate & Grain Chute
- 16 in. Extendable Sides
- 10 ga. Floor & Sides
- 11Lx15 Flotation Tires
- 2-Way 4 in. x 24 in. Hydraulic Cylinder includes hoses

**7-Ton Road Dump Trailer**

- Fifth wheel or bumper type
- 16 ft x 8 ft deck 3 ft front rack and pockets side & back
- D C hydraulic pump & battery mounted in locking tool box.
- 12 ton drop leg jack
- 10 ga floor
- 6x3x3/16 tube main frame
- Sealed beam lighting
- 7000 lbs per axle rating
- Electric brakes on both axle
- 16" tires on white spoked rims
- \$6400 U S delivered in Northeast U S A



**BERKELMAN'S WELDING**

RR 7, AYLMEER, ONTARIO, CANADA N5H 2R6  
(519) 765-4230

**FOR SALE**



1986 Ford F350 w/14 ft. Van Body, 351 V8, AT.  
**ONLY \$2,500**

Call 717-865-7575 or 717-507-5017

**1979 Paystar 5000 Roll Off,**  
290 HP Cummins 70000 mL. on Rebuilt  
6sp Fuller Trans, Rebrushed Rears,  
Accurate 60000 lb. Hoist, O-R New Paint,  
Runs Strong.  
**\$17,500**  
**609/561-6510 Evens.**

**PRE-OWNED CARS PRE-OWNED TRUCKS PRE-OWNED MPV'S**

<b>'98 MERCURY TRACER LS 4dr</b> 27,000 mi, A/OD, 4 Cyl, PB, PS, PW, PDL, Cruise, Tilt, AM/FM Cass, A/C	<b>'97 FORD RANGER XLT 4x4, S/CAB</b> 35,000 Mi, A/OD, 4 OL 6 Cyl, AM/FM Cass, A/C	<b>'98 TOYOTA RAV 4 4x4</b> 22,000 Mi, A/OD, 4 Cyl, PB, PS, PW, PDL, Cruise, Tilt, AM/FM CD Player/Cass, A/C, Electric Sunroof
<b>'99 FORD ESCORT ZX2</b> 2 Dr, 2 000 Mi, 5 Spd, 2 OL 4 Cyl, PB, PS, PW, PDL, AM/FM CD Changer/Cass A/C, "Keyless Entry"	<b>'96 FORD F150 S/CAB, XLT</b> Conversion, 20 000 Mi, A/OD, 5 OL 8 Cyl, PB, PS, PW, PDL, Cruise, Tilt, AM/FM Cass A/C, Leather Interior	<b>'96 JEEP CHEROKEE COUNTRY, 4 Dr, 4x4</b> 29,000 Mi, A/OD, 4 OL 6 Cyl, PB, PS, PW, PDL, Cruise, Tilt, AM/FM Cass, A/C, "Keyless Entry"
<b>'94 AUDI 90S SDN.</b> A/OD, 2 8L 6 Cyl, PDL, Cruise, Tilt, AM/FM Cass, Leather Interior, "Electric Sunroof"	<b>'99 FORD F350 S/CAB 4X4 XLT</b> 7,000 Mi, A/OD, 6 8L V-10, PB, PS, PW, PDL, Cruise, Tilt, AM/FM CD/Cass, A/C, "Off Road Package"	<b>'97 FORD AEROSTAR XLT EXT. AWD</b> 22,000 Mi, A/OD, 4 OL 6 Cyl, PB, PS, PW, PDL, Cruise, Tilt, AM/FM Cass, A/C
<b>'98 FORD TAURUS SE</b> Sdn, 17,000 Mi, A/OD, 3 OL 6 Cyl, PB, PS, PW, PDL, Cruise, Tilt, AM/FM Cass, A/C	<b>'95 MAZDA B4000 SE S/CAB 4x4</b> 49,000 Mi, 5 Spd, 4 OL 6 Cyl, AM/FM Cass, A/C	<b>'98 JEEP WRANGLER SAHARA</b> Hard Top 4x4, 41,000 Mi, 5 Spd, 4 OL 6 Cyl, Cruise, Tilt, AM/FM CD Changer/Cass, A/C
<b>'98 CHEVY CAVALIER</b> 2 Dr, 20,000 Mi, 5 Spd, 4 Cyl, AM/FM Cass, A/C	<b>'95 CHEVY K1500 WORK TRUCK 4x4</b> 38,000 Mi, 5 Spd, 6 Cyl, AM/FM Cass, A/C	<b>'97 FORD EXPEDITION 4x4</b> Eddie Bauer 28 000 Mi, A/OD, 5 4L 8 Cyl, PB, PS, PW, PDL, Cruise, Tilt, AM/FM Cass, A/C, "Leather Interior"
<b>'96 OLDS ACIEVA SL 2 DR CPE</b> 23,000 MI, 5 Spd, 2 4L, 6 Cyl, PDL, Tilt, A/C, AM/FM	<b>'99 FORD F350 S/C XLT, DUALY 4x4</b> 22,000 Mi, 5 Spd, 7 3L Turbo Diesel, 8 Cyl, PB, PS, PW, PDL, Cruise, Tilt, AM/FM Cass, A/C	<b>'98 FORD EXPLORER SPT, 2 Dr</b> 4x4, 22,000 Mi, A/OD, 4 OL 6 Cyl, PB, PS, PW, PDL, Cruise, Tilt, AM/FM CD Player/Cass, A/C
<b>'97 FORD ESCORT LX 4 Dr</b> 7,000 Mi, A/OD, 2 OL 4 Cyl, AM/FM Cass, A/C, "Keyless Entry"	<b>'95 FORD F150 XLT 4x4</b> 5 Spd, 4 9L 6 Cyl, PB, PS, PW, PDL, Cruise, Tilt, AM/FM Cass	<b>'96 FORD EXPLORER LIMITED 4x4, 4 Dr</b> 61,000 Mi, A/OD, 4 OL 6 Cyl, PB, PS, PW, PDL, Cruise, Tilt, AM/FM CD Player/Cass, A/C "Leather Interior"
<b>'97 FORD CROWN VICTORIA LX</b> 6,000 Mi, A/OD, 4 6L 8 Cyl, PB, PS, PW, PDL, Cruise, Tilt, AM/FM Cass, A/C, "Leather Interior"	<b>'98 FORD F150 S/C 4x4 XLT</b> 8 ft Bed 20 000 Mi, A/OD 8 Cyl, PB, PS, PW, PDL, Cruise Tilt, AM/FM Cass A/C "Off Road Package"	<b>'95 CHEVY BLAZER 4 Dr</b> LT Pkg, 4x4, A/C & Leather

**Binkley & Hurst Bros. Offers....**  
*Eager Beaver*. **HIGH FIVE TRUCK LOAD SALE ON NEW 20-TON HIGH TENSILE TRAILERS**



**HIGH FIVE**

**Don't Miss This One!**

**Make Your Move To Quality Eager Beaver From Binkley & Hurst In January And SAVE!**

**25 Ton Eager Beaver**

Small Enough To Pull Behind Your Dump Truck, Big Enough To Haul Your Medium Size Excavator, Only 8 Degree Loading Angle

See Binkley & Hurst Bros. Inc. Today **In Stock!**



**25XPT EASY LOADER:**

25 Ton Capacity Tri-Axle, 8° Degree Loading Angle

- CAPACITY: 50,000 Lbs. • Trailer Weight: 11,200 Lbs.
- Overall Width: 102", Length: 34'4" • Deck Height: 34"
- Deck Length: 22' Flat, 6' Beavertail • Ramps: 72" Long x 21 1/4" Wide

Optional Aluminum Extension Ramps  
Call 1-800-414-4705 717-626-4705

Ask For Dean

See Us For 35 and 50 Ton Detachable Spring or Air Ride Trailers

**BINKLEY-HURST BROS. INC.** 133 Rothsville Station Rd. P.O. Box 0395 Lititz, PA 17543-0395 (717) 626-4705 1-800-414-4705  
Fax 717-626-0996 www.binkleyhurst.com

**ENGLE-RISSINGER AUTO GROUP**  
FORD \* LINCOLN \* MERCURY \* JEEP  
Midway Between Halifax And Millersburg • 717-896-3421 • 1-800-242-8075  
HOURS: Monday-Friday 8:30 AM - 8:30 PM; Saturday 8:30 AM - 3:00 PM

**TRUCKS, TRUCKS, TRUCKS...**

**2000 Express Cutaway**  
Stahl Utility Service Van, V8, A/C, 12,000 GVW

**1997 Isuzu NPR Box Truck**  
14' Box. Also Avail - (2) 1999 Chev. C3500 Cutaway Box Trucks. 1 - Gas. 1 - Diesel.

**1999 & 2000 Chassis Cabs**  
Diesel & Gas

**2000 Express Cargo Vans**  
(1) 1-Ton, (4) 3/4 Ton, (2) 1/2 Tons. All with AT & A/C.  
★ SPECIAL FINANCING AVAILABLE. Commercial Choice Program

**2000 Silverado 3/4 Ton**  
Ext. Cab Pick-Ups, 10 Available, 5-Spd./Auto, V8, A/C

**2000 Chev. Astro Cargo Vans**  
AT, V6, 6-in Stock, ★ SPECIAL FINANCING AVAILABLE. Commercial Choice Program.

*Frederick*   
**SUPERMARKET OF CARS TRUCKS**  
1505 Quentin Rd., Lebanon, PA 17042 (717) 274-1461