

1988 Ford F350XL T Lariat Dually  
351 Automatic. 66,000 miles. Nice.  
**\$5,000 OBO**  
Call Ray at  
570-387-1779

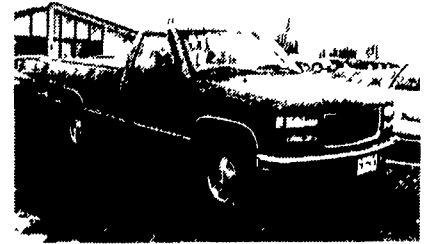
## TRUCKS - UTILITY VEHICLES - TRUCKS



**95 F350** 4x4, 5 Spd., XLT,  
70K Miles, PL4250A, Black



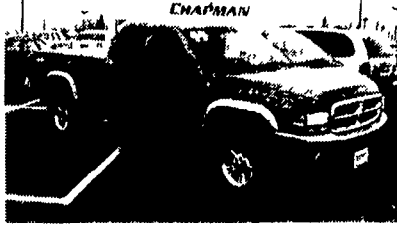
**99 FORD EXPEDITION**  
5.4, Rear Seat Air,  
17" Alloy Wheels, XLT Pkg.  
- SAVE THOUSANDS -



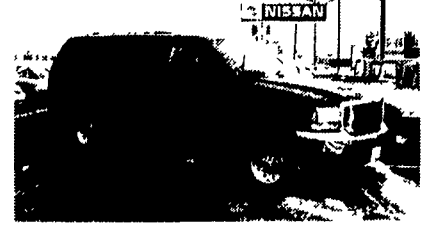
**97 GMC SLE** 4x4, 350 AT,  
Z71 Off Road Pkg., 43K Miles,  
P4184A, Teal



**98 F150** Super Cab 4x4 XLT,  
5.4L V8, Off Road Pkg.,  
40K Miles, 4386A, Blue



**99 DODGE DAKOTA**  
Ex. Cab, V6, SLT Pkg., 9K Miles,  
1 Owner PL4255, Blue



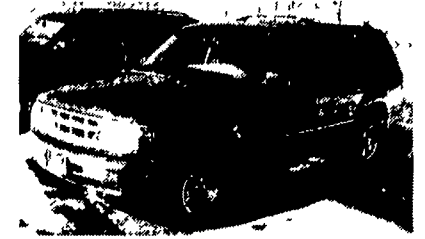
**2000 EXCURSION** 7.3 PS  
Diesel, Leather Towing Pkg.  
#4393A, Green



**97 NISSAN QUEST GXE**  
Quad Captains Chairs,  
32,000 Miles, #P4292



**97 JEEP CHEROKEE**  
**LAREDO** 6 Cyl., AT, A/C, Alloy  
Wheels, 48,000 Miles, #4309



**97 FORD EXPLORER**  
XLT, 4 Door, 6 Cyl., CD Player,  
Alloy Wheels, 34K Miles

**CHAPMAN**

FORD LINCOLN MERCURY NISSAN

**LEBANON**

717-272-7671

Parts Dept. Open Daily 8-5  
Sat. 8-12 717-273-8168

PART OF THE  
**CHAPMAN**  
AUTO GROUP

20th & Cumberland Sts.  
Rt. 422 West  
9-9 Daily, 9-5 Sat.

### Load Boss Trailers



**814-623-8696**  
**814-623-9696**  
**FAX: 814-623-7995**

Quality Built Highway Dumps Built To  
Suit Your Working Needs:

**Winter Sale** 6 x 10 7,000 **\$3,100**  
6 x 10 10,000 **\$3,300**

New\* 3 way tailgate with dump truck  
style lever \*painted color of choice\*  
FREE 200 mile delivery

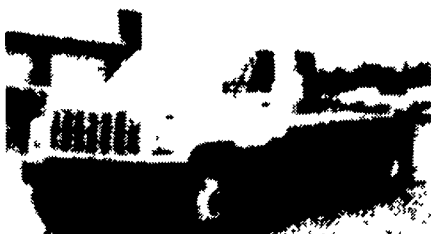
**We Are The Factory**  
**No Middle Man!!**

# AL HAMILTON MANAGEMENT COMPANY

P.O. Box 157 • 55 Doe Run Road • Manheim, PA 17545

Phone: 717-665-7145 • Fax 717-665-2137

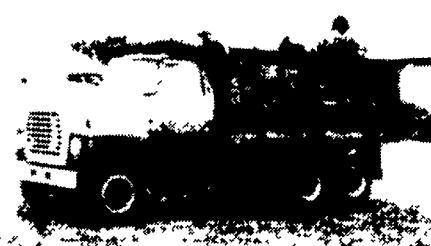
★★★ "CLEANEST TRUCKS AROUND" ★★★



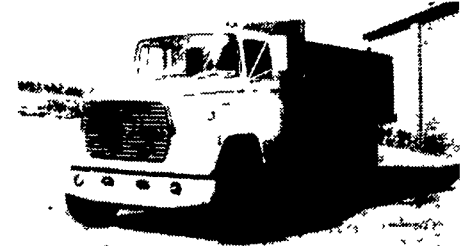
**1992 GMC Topkick**  
3116 Cat Diesel, 6 Spd. Trans., PS,  
Air Brakes, Lift Axle, 22' Flat Dump,  
52,000 GVW, Low Miles - \$28,500



**1985 Ford F-700**  
370 Gas, 5 Spd. Trans., 2 Spd. Rear, Hyd  
Brakes, 21' Eby Cattle Body, Exc. Cond.  
**\$15,500**



**1977 Ford LT 8000**  
15' Dump, 3208-T Cat 250 HP, 13 Spd  
Trans., 58,000 GVW  
**\$15,500**



**1986 Ford LN8000**  
16' Steel Dump, 3208 Cat, 210 HP, 5 Spd  
Trans., 2 Sp. Rear, Custom Int., Air Brakes,  
33,000 GVW **\$21,500**



**1994 Ford LNT9000**  
L-10 Cummins, 280 HP, 10 Spd. Trans, PS,  
Air Brakes, A/C, Custom Int., 260 WB,  
192 CA, 56,000 GVW - \$38,500



**1992 Ford LN8000**  
C&C 7.8 L Diesel, 210 HP, 6 Spd. Trans.,  
Custom Int., 234" WB, 168" CA,  
33,000 GVW - \$19,500



**1994 Int. 4700 C&C**  
Low Profile, DT-408 190 Hrs 6+1 Trans.,  
Hyd Brakes, 176 WB, 108 C.A., 25,500  
GVW, A.C. **\$22,500**



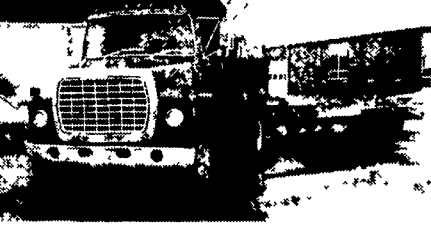
**1991 Ford LN9000**  
w/New 10' Dump, L-10 Cummins,  
9 Spd Trans., 34,700 GVW  
**\$25,500**



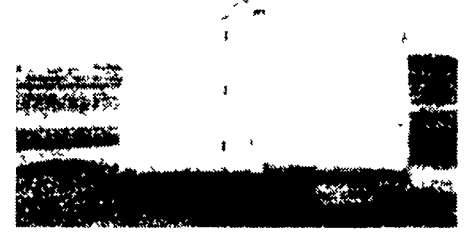
**1995 Ford LN8000**  
8.3 Cummins, 210 Hp, 6 spd Trans, P.S., Air  
Brakes, A/C, 35,000 GVW, New 11' Dump  
**\$35,500**



**1992 Int. 4700**  
C&C, DTA, 360, 170 HP, 6+1 Trans., Hyd.  
Brakes A/C, 176 W.B., 108 C.A., 26,000  
GVW **\$15,500**



**1979 Ford LN8000**  
w/11 Ton Eager Beaver Tri., 477 Gas, 5 Spd  
Trans., 2 Spd. Rear, 35,000 GVW,  
Combination **\$13,500 Or Will Separate**



**Van Bodies**  
(14) 20' - 22' - 24'  
Starting At **\$1,000 Ea.**



**1995 Ford LN8000**  
C&C 8.3 Cummins, 210 HP, 6 Spd. Trans,  
Custom Int. A/C, 260 W.B., 192 C.A., 35,000  
GVW **\$26,500**



**1995 International 4700**  
DT466, 190 HP, 25,500 GVW, 236 W B,  
124 C.A., Low Mileage, 6+1 Transmission,  
AC, Custom Cab, Mint Condition - **\$25,500**