



GOODYEAR

#1 in Tires

FARM TIRES FOR EVERY FARM NEED!

DURATORQUE

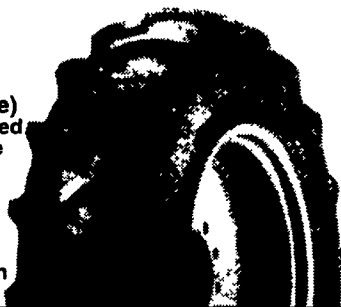
Economy Bias-Ply
\$194⁰⁰

Priced With Long/
Long Bar 13.6x28
Tubeless 6 Ply TT

Other Sizes Available

(Mounting Available)

- Excellent roadability provided by over lapping lugs in the center
- Traction in a wide range of sizes due to the long bar design
- Long wear and durability from the braced lug design
- Easy lug cleanability



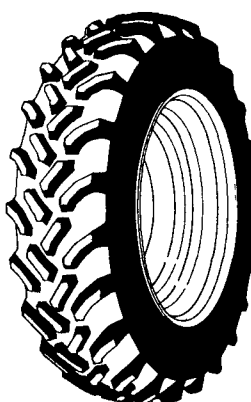
DT710 RADIAL

As Smooth On The Road
As It Is Powerful In The
Field

\$499⁰⁰

184R38*
No Trade needed
Other Sizes Available

- New interlocking center lugs deliver important cushioning surface area that smoothes out the ride on pavement
- 60% Increase in biting tread edges lets you work faster in all kinds of soil - wet or dry



TRIPLE RIB HD



- Improved steering in loose, cultivated soil provided by the deep, wide center ribs
- 3 rib design provides excellent steering capabilities

550-16
4 Ply TT

\$43⁹⁵

Other Sizes Available

IT510 RADIAL

175 LR 24 8 Ply

\$549⁰⁰

Other Sizes Available

- Maximum traction supplied by additional biting edges from the overlapping lug/block pattern
- Flotation and traction provided by a larger contact patch

ULTRATORQUE RADIAL

Cuts Through Mud, Dirt,
And All Kinds Of Soil

\$549⁰⁰

380/85R28 TL Replace 149R28
No Trade Needed Other Sizes Available

- Open center mud-channel for cleanability
- Centerline riding pads for smooth roading and excellent wear
- Conventional long bar design offers premium traction



FARM UTILITY

- Outstanding flotation
- Easy steering from the heavy grooved ribs

11L15 8 Ply TT

\$46⁹⁵

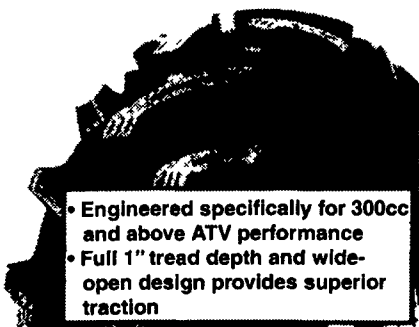
Other Sizes Available

Rib Implement Tire-
Easy Operation
For Many Types of
Equipment



TRACKER MUD RUNNER

Our Most Aggressive
ATV Mud Tire



- Engineered specifically for 300cc and above ATV performance
- Full 1" tread depth and wide-open design provides superior traction

Workhorse XG Radial

Other
Sizes
Available

Economy
All-Weather
Radial For
Light Trucks
Heavy Duty
On/Off Road
LT 235/75R15
Load Range "C"

\$99⁰⁰



LABORER

Heavy Duty Industrial Tractor
Front Wheels 11L-15 8 Ply

\$89⁹⁵

OTHER SIZES AVAILABLE



INDUSTRIAL TIRES

175L-24 - 8 Ply

\$269⁰⁰

Other Sizes Available



**TWO REASONS
YOU CAN COUNT
ON GOODYEAR**

**Goodyear's New
Agricultural Warranties**

See Your Local Goodyear For Full Details.

<p>Bastian Tire Sales R2603 Reach Road Williamsport, PA 17701 1-800-362-5279</p>	<p>Service Tire Truck Centers, Inc. 3403 Concord Road (PIE Building) York, PA 17402 717-755-8473</p>	<p>Service Tire Truck Centers, Inc. 1601 Manheim Pike Lancaster, PA 17604 717-569-8473</p>	<p>Zimmerman Farm Service School Rd Bethel, PA 19507 717-933-4114</p>	<p>BHM Farm Equipment RD 1 Rt 934 North Annville, PA 17003 717-867-2211</p>	<p>Horlacher & Sherwood 153 E Tioga Tunkhannock, PA 570-836-1116</p>
<p>Service Tire Truck Centers, Inc. 5082 East Landis Avenue Vineland, NJ 08360 856-692-9393</p>	<p>Donald B. Rice Tire Co. 1420 Tilco Drive Frederick, MD 21701 1-800-407-0556</p>	<p>Lebanon Valley Imp. Co. 700 E Linden St Richland, PA 17201 717-866-7518</p>	<p>Dices Tire Shop 1421 Lincoln Way Chambersburg, PA 17087 717-264-9312</p>	<p>Neatons Tire 25 East Ave Easton, MD 21601 1-800-317-6152</p>	<p>Bastian Tire Sales Rt 11 & 15 Shamokin Dam, PA 17876 1-800-326-9465</p>

CALL 1-800-FARMTIRE. GOODYEAR As American As Farming.

Check our Web Site @ www.Goodyear.com - Click on tires-- Click on North America tire-- Click on Farm & Industrial