

Public Auction Register

Closing Date Monday 5:00 P.M.

of each week's publication

Internet Sale Register will be updated every Sat. at 2:23 P.M.

ATTENTION Auctioneers

All sales register info needs complete address, street, town, county & state.

SAT APR 15 - 9:30AM Farm equip Nelson Gardner and family Robby Holstein Farm At Rickingham Fairgrounds Harrisonburg, Va Tom M Weaver & Kent Weaver aucts

SAT APR 15 - 11AM Branchport (Yates Co) New York on the Guyanoga Valley Road across from Valley Inn Lawrence McMinn Farm Machinery Retire-

ment Auction Pirrung Auctioneers, Inc

SAT APR 15 - 12PM N Cornwall Twp, Lebanon Co, Pa 2170 Colebrook Rd Leb Nelson L Ebersole, auct

SAT, APR 15 - 1PM (Due to Easter) State Graded Feeder Pig Sales Carlisle Livestock Market Inc 548 Alexander Spring Road, Carlisle, Pa

TUES, APR 18 - Fat Cattle Sale, Carlisle Livestock Market, Inc., 548 Alexander Spring Road, Carlisle, PA

TUES, APR 18 - 7:45PM Feeder Cattle Sale Carlisle Livestock Market, Inc 548 Alexander Spring Rd., Carlisle, PA

WED APR 19 & THURS, APR 20 - 8:30AM Wed Lawn & Garden Tractors, misc items Thurs Misc items, tires, posts, etc Farm Equip & tractors 6 miles S

of Chambersburg, Pa. 1 mi E of manon, just E off I-81 at Marion along Rt 914 Marion Auction Service

THURS APR 20 - Equipment Sale 9 AM Middleburg Livestock Auction Sales, Inc Middleburg, Pa

THURS APR 20 - Feeder Sale 7 PM Middleburg Livestock Auction Sales, Inc Middleburg, Pa

FRI APR 21 - 7PM Blue Ribbon Show Pig Sale Cambria Co

Dairy and Livestock Sales

Fairgrounds, Keith Bard family, Portage Harry H Bachman, auct

SAT APR 22 - 8:30AM - Horse 10AM Mel's Stables, 834 Wallace Rd., New Holland, PA Mel Hoover, Auctioneer

SAT APR 22 - 6PM Holloway-Parlett - Hoiloway Show Pig Sale, Solanco Fairgrounds, Quarryville, Pa Harry H. Bachman, auct

WED, APR 26 - 9AM Farm Equip., Tractors, Truck Lots To be held at Wolgemuth Auction, 109 N. Maple Ave., Leola, Lanc

Co., Pa 717-656-2947

THURS APR 27 - 5PM Real Estate, personal property, antiques 1365 Apple St. Ephrata, Pa Ephrata Boro By Melvin Z Weber Homing Farm Agency, Inc 610-286-5183

FRI, APR 28 - 1PM State Graded Feeder Pig Sales Carlisle Livestock Market, Inc 548 Alexander Spring Road, Carlisle, Pa

FRI APR 28 - 5PM 1606 Main St, Goodville E Earl, Pa Lawn & Garden For Goodville Fire Co

FRI APR 28 - 7 PM Horse Sale

New Holland Sales Stables, 101 W Fulton St., New Holland, Pa

SAT, APR 29 - Personal property, antiques, 130 Frogtown Rd., East Earl, Pa Chester & Edna Weaver Kline, Kreider & Good, auct

SAT APR 29 - Horse Sale 8:30 Tack 11 AM Tack Middleburg Livestock Auction Sales, Inc Middleburg, Pa

SAT APR 29 - Public Sale of Household, beef cattle, farm machinery, several JD tractors Lee Casner, Blain, Pa owner Kevin M Wickard, auct

Big 37th Annual Spring Sale

Kempton Community Recreation Center Northern Berks County

Kempton, Pa.

Saturday, March 18, 2000

Rain or Shine

Largest & Longest

Running Sale

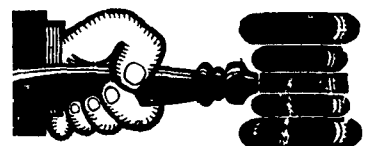
Of Its Kind In The Territory

Any Inquiries Call

610-756-6973

NOTICE!!!

Look For Public Sales Scheduled Past Deadline On Second To Last Page Of Section A



AUCTIONEER'S DIRECTORY

Call 717-626-1164 to list your auction service.

NOTICE

To assure that your Public Sale appears in the Public Sale Section we must have your advertisement by 5 P.M. Tuesday of each week's publication



ALL POINTS AUCTION CO.

LEBANON, PA 717-270-4555

PUBLIC AUCTION

MON., FEB. 21, 2000

at 1:00 PM

RESTAURANT EQUIPMENT

At Wolgemuth Auction Premises

109 N. Maple Avenue, Leola, PA 17540

EQUIPMENT: 60 qt. Hobart Mixer, 20 qt. Hobart Mixer w/attach., 20 qt. Berkel Air Mixer, 6 Burner Commercial Range, Krefft Meat Grinder, Tenderizer, Chipper. **Two** Patty Machines, Commercial Meat Slicer, **Five** Meat Slicers (1 Berkel & 1 Unvex Manual Slicers), Like New Globe Slicer, Hobart Ban Saw, Quikcut Ban Saw, 4732A Hobart S.S. Meat Grinder, 8' & 12' McCray Deli Case, 57" Curve Glass Ref. Bakery Case, Dry Candy & Bakery Cases in various sizes, 8' Meat Case, 5'x8' Display Case, **Three** 8' Deli Cases, 4' Sandwich Case, Delfield Pie Case, 8-door S.S. Traulson Refrigerator, Powers Glass 2-door Ref., **New** 4' Dipping Cabinet, Victory 2-door S.S. Ref., **Three** 4'x32" Pass-through S.S. Ref., **Three** Dbl. Sliding Glass Door Ref, **New** Silver King Dbl. Door Sandwich Ref., 2'x3' Single Phase Superior Grill, S.S. Bunn-omatic Coffee Unit, **Several** Hot Dog Machines one w/bun warmer, Sami Serv Table-top Soft Ice Cream Machine, Snowcone Machine, Carnal Ice Cream Machine, w/casters, 6'x8' Walk-in Ref., **Five** Dbl. Bay S.S. Sinks, 3-Bay S.S. Sink, Vulcan Conv. Oven, Sm Pretzel Oven, 4-burner LP Gas Stove, 4 Spit & 7 Spit Esquire Barb-B-Q Gas, **Numerous** S.S. Plates, Bowls & Silverware, Lipton S.S. Ice Tea Dispenser, Hot Cocoa Machine, 8' S.S. Steam Table, **Two** S.S. Tables 4'x2-1/2', 3'x10' Butcher Block Table, **New** & Used Bag Sealers, Sharp Microwave, 208V Elec French Frier, 4' & 6' Blodget 2-door Pizza Oven, Dahlen Bakery Oven, Dbl. Unit Vulcan Fry Cat, Single Unit Vulcan Frier, **New** P&H Choc. Waiver, Berkel Bread Slicer, Rondo Dough Shooter, **Four** 100 lb. Bakery Container w/casters, Victory Holding Cabinet, 16" Broaster, Cheese Slicer, Fry Cutter, **Numerous** Bakery Racks, Pans & Trays, 5' Ice Cold Salad Bar, 8' Ref Salad Bar, Ice Freezer, 4' Pinnacle Hot Food Warmer, Acme Dough Roller, Smoke Eater, Ref. self-contained Salad Bar Insert, 2' & 3' Gas Grills, Soup Kettle Warmers, Hot Point Table Top Fryer, Pizza Warmer, 100 Cup Elec Coffee Maker, Stock Pots, Hobart Dishwasher, Propane Single Burner Stove, S S Pans, Lg. Amount Silverware & utensils, Bunomatic 2 & 3 burner Coffee Machines, Popcorn Machine, Dough Roller, Smoke-a-rama Pressure Smoker Also, over 40 Hitchcock Chairs, over 700 Folding Chairs, 10 Tables w/chairs

AUCTIONEER'S NOTE: Lots of Small Items too numerous to mention, consignments coming in daily. Nice Clean Restaurant Equipment, the Items were moved to Leola location for your convenience. Possible selling with 2 Auctioneers. Sale held indoors, with a Tow Motor and Loading Facilities. Plan now to attend!

TERMS: Cash or PA Check with ID.

Sale For: **WOLGEMUTH AUCTION** Agent For Owners

WOLGEMUTH AUCTION (#2357)

Dennis (717) 656-2947 FAX (717) 656-6011

Ask For John

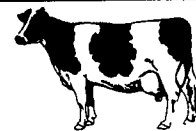
<http://www.wolgemuth-auction.com>

EMAIL - wolgemuth-auct@juno.com

Bob Wolgemuth

John Hess

NEW HOLLAND SALES STABLES, INC.



New Holland, Pa.

Located 12 Miles East of Lancaster, just off Rt. 23

DAIRY SALE WEDNESDAY, FEB. 16, 2000

10:00 AM
12:00 NOON

OPEN BRED HEIFERS
BULLS, FRESH COWS, SPRINGERS

Weekly Consignors

- Merle Breneman • Leroy Smucker • Jim Hostetter
- Marvin Eshleman • Dale Hostetter • Daniel Z. Stoltzfus

SPRINGERS and FRESH COWS SELL!!! Load of Springers From Canada

Note To Consignors!

Please send all information along with your test Tues. Fresh Date, Breeding Dates, Milk Weights, TB & Blood Test charts with your trucker.

Sale Managed By

New Holland Sales Stables, Inc.

Birth 717 351 1311 Fax 355 0706 Home 717 397 5538

Norman & David Kolb, Mgrs. 61L

SMUCKER DRAFT MULES

You're invited to attend a

Special Mule Sale



Friday, March 3, 2000 - 10 AM

Auctioneers

Steve Petersheim AU01349-L

Paul Snyder AU-000873-L

Held at:

NEW HOLLAND SALES STABLES

New Holland, PA

354-4341

FOR MORE INFO CONTACT PAUL SMUCKER
(717) 299-3721

Another Cochran Auction MONTHLY FARM, LAWN, GARDEN & BUILDING MATERIAL AUCTION

Will sell the following located at the COCHRAN AUCTION COMPLEX,
7704 Mapleville Road, Boonsboro, W.C., Maryland on.

MONDAY EVENING, FEBRUARY 21, 2000

5:00 PM

Tractors & Farm Equipment including: JOHN DEERE 4430 Diesel Tractor, INTERNATIONAL B275 w/Loader; FORD 8N Tractor & Other Tractors; Skid Loaders; Hay Equipment; Tillage Equipment; Planting Equipment & Miscellaneous; Lawn & Garden Tractors of Various Makes & Models; Push Mowers; Weed Wackers & Other Related Equipment. Large Selection of Building Materials. Large Selection of New/Unused Office Furniture & Supplies.

WATCH FOR DETAILED AD!

TERMS: Cash or approved check with positive identification. Lunch Rights Reserved. Not responsible for accidents. MAJOR CREDIT CARDS ACCEPTED w/5% Admin. Fee

AUCTIONEER: James G. Cochran

CLERK: T. E. Bikle

(22-00)

JAMES G COCHRAN
CEO/Auctioneer



Cochran

AUCTIONEERS & ASSOCIATES LTD
PROFESSIONAL AUCTIONEERS AND APPRAISERS SINCE 1972
7704 MAPLEVILLE ROAD, POST OFFICE BOX 222
BOONSBORO, MARYLAND 21713 0222
301-739-0638

THOMAS E BIKLE
Director of Marketing



NATIONALLY RECOGNIZED - AWARD WINNING AUCTIONEERS SINCE 1972

WEEKLY AUCTIONS

MONDAYS 3 PM

2152 N. READING ROAD
DENVER, PA 17517



Antiques

Sat. 10-5

Sun. 8-5

barrs@desupernet.net

- Antiques, Estates, Household, Commercial, Real Estate
- Computerized Auction Service With On-Site Capabilities
- Buy Or Sell On Commissions
- No Buyer's Fee
- No Hidden Fees

717-336-2861

KREIDER, KLINE & GOOD

AUCTIONEERS

COMPLETE PROFESSIONAL AUCTION SERVICE

REAL ESTATE - FARMS & RESIDENTIAL

PERSONAL PROPERTY - ANTIQUES -

FARM STOCK SALES - LIQUIDATIONS

RANDAL V. KLINE
AUCTIONEER-REALTOR
717-733-1006

LLOYD H. KREIDER
717-786-3394
717-786-3394

ROY E. GOOD, JR.
AUCTIONEER
(717) 445-4309