

Sale Reports

HESS ESTATE & STEFFY ESTATE SALE
Antiques, household goods, collectibles, tools and a car were sold Wed-

nesday at a public auction held for the E. Pauline Hess estate, the John K. Steffy estate and others at Horst Auction Center, Ephrata.

There were 453 registered bidders.

Highlights included a box of marbles, \$1,500; a stoneware decorated pitcher, \$775; a double-handled vase, \$500; a pair of sterling candleholders, \$230; a race

set, \$160; a bank, \$160; bird peanut butter glasses, \$220; a Noah's Ark print, \$135; a wedding girl print, \$160; a redware mug, \$160; a Staffordshire Proverbs plate, \$145; an R.S. Prussia chocolate pot, \$150; an R.S. Prussia plate, \$170; an R.S. Prussia bowl, \$110; an R.S. Prussia pitcher, \$330; an R.S. Prussia cake plate, \$220; two R.S. Prussia pieces, \$220; an R.S. Prussia berry set, \$125; two perfume bottles, \$190; a Roseville vase, \$250; a Roseville pinecone basket, \$190; a Roseville teapot, \$200; a Roseville buffet set, \$130; and a Roseville pinecone vase, \$275.

Also, a four-section stacked bookcase, \$625; a sectional sofa, \$525; a canopy bed, \$525; a modern table and four chairs, \$350; a four-piece modern bedroom suite, \$200; a mahogany lampstand, \$110; a pair of Victorian chairs, \$180; a step-back cupboard, \$370; a chest of drawers, \$160; a white fireplace mantel, \$180; a red wooden wheelbarrow, \$220; a Depression chest of drawers, \$130; a two-door cupboard, \$200; a chest of drawers, \$120; a mahogany

library table, \$230; a 22-drawer cabinet, \$325; a plaid sofa, \$235; a high chest of drawers, \$170; a Ridgeway grandmother clock, \$250; a Zenith

Lancaster Farming, Saturday, February 12, 2000-B21

portable TV, \$190; a Zenith color TV, \$170; and a Cadillac DeVille sedan, \$5,300

The sale was conducted by Horst Auctioneers, Ephrata



The Estate of David Weidner, et al. WEDNESDAY, FEBRUARY 16, 2000 1:00 PM

To Be Held At: Gouglersville Fire Co., just off Rt. 222 & Mohn's Hill Rd., Reading, PA

Hobart Commercial Mixer, Shop Vac, Lg. Amt. of Tools including "like new" SHOP-SMITH MARK V Home Work Shop System Complete with Vac System & Manual; Craftsman 12" Band Saw/Sander; B&D 10" Shop Radial Arm Saw; Motor Shop Table-Top Scroll Saw; Mount Jig Saw; Lathe Hand Tool Sets; Dremel Disc/Belt Sander w/Attach.; Dremel MotoTool; Craftsman 10" Radial Saw, Tool Boxes; Bench Grinder; Bench Vice; Power Drills & Saws; Drop Lights; Wood Lathes; Scissor & Shear Sharpener; Push Mowers; CUB CADET 1650 HYDROSTATIC RIDING TRACTOR (runs good); CUB CADET 73 RIDING TRACTOR, RADIO UTILITY TRAILER; 5 pc. Fancy Waterfall Bedroom Suite; Modern child's 5 pc. White Bedroom Suite; 4 pc. Cherry Bedroom Suite; Pine Dining Room Suite; Dressers; Upholstered Chair; Coffee & End Tables; Table & Floor Lights; China; Patt.-Pressed-Dep. Glassware; Kitchen & Bakeware; Costume Jewelry; Box lots and many other items too numerous to mention. WE WILL BE FULL!

10% Buyer's Premium.

TERMS: Cash or Approved Check.

Auction By: Pennypacker-Andrews Auction Centre, Inc.

Cathy M. Pennypacker-Andrews Lic. #AU-001254-L

Marie D. Gross (610) 777-6121 or (610) 777-5890

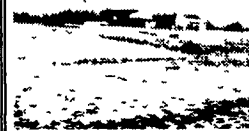
AUCTION

10:00
TUESDAY
FEBRUARY 29th

LOCATION: Todd County, KY - Trenton Community (KY-TN State Line). From Trenton, KY travel Highway 41 North 2 miles, turn left onto Highway 1589 (Mimms Rd.), go 1 1/2 miles. See Signs.

**112 ACRES +
2 STORY HOME WITH FULL BASEMENT
40'X136' MILK BARN W/LOFT
4 BAY EQUIPMENT SHED
(All Buildings Constructed new in 1995)**

Farm has 112 Acres ± Openland, some small areas of scattered trees; topography is level to gently sloping, long blacktop frontage on Mimms Road; West Fork Creek borders property on the back, growing alfalfa on portion of farm



FARM IMPROVEMENTS: 20'x80' Four Bay Open Equipment Shed; 40'x136' Milk Barn w/box stalls & parlor, large loft for tobacco or hay.

HOME is 2-Story; approximately 3000 sq' living space plus a full basement; all rooms are large, Farm view from every direction; Amish family equipped and maintained - Home built new in 1995

BROCHURE & PLOT AVAILABLE

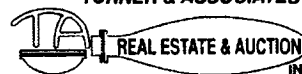
TERMS: 15% Day of Sale, balance w/deed. Deed in 30 days or less. Any announcements made day of sale take precedence over printed material.

OWNER:

MR. & MRS. JACOB STOLTZFOOS

TURNER & ASSOCIATES

(270) 887-9977
(270) 885-6789
KY. DIAL FREE
1-888-303-8862



2212 Ft. Campbell Blvd.
Hopkinsville

LINDA TURNER
BROKER-AUCTIONEER
(270) 439-7786

JAY FIESE
APPR AUCTIONEER
(270) 466-5976

SAMUEL (SAMBO) WRIGHT
APPR AUCTIONEER
(270) 475-4659

TOMMY ANDERSON
BROKER - AUCTIONEER
(270) 886-9042

Sale Starts at 9:00 a.m.

HONEY BROOK FIRE CO. ANNUAL CONSIGNMENT AUCTION

Quilts Start at 12:00 noon

Sat., February 19, 2000

Location: Auction to be held at Honey Brook Fire Company, one block south of the intersection of Route 10 and Route 322 on Firehouse Lane in the Borough of Honey Brook, Chester County.

• LOTS OF GROCERIES • • QUILTS & CRAFTS •

Quilts: Wall Hanging; Quilts; Pillows; Table Runners; Shadow Boxes; Blue Bird Houses, Wooden Buckets (some painted); Lots of Wooden Crafts. A Few Early Quilt Listings: Grandmother's Patches, Irish Chain Hearts, Distelfink, Dalhia, Log Cabin, Sunshine & Shadow, Country Bride, Lone Star, Plain Feather Heart

• OUTDOOR FURNITURE •

Wishing wells; Lighthouse Towers (1 Cape Hatteras & 1 Barnegat); Rose Arbor, Chairs; Rockers; Gliders; Settees; Picnic Tables (1 Octagon w/benches); Swing Sets; 1 w/attached 6x8 play house & 14' sliding tube; 2 - 6x8 Play Houses, Indoor and Outdoor Ornamental Iron, Wooden Mailboxes

• NEW HOUSEHOLD FURNITURE •

New Furniture: 1 Oak & 1 Cherry Bedroom Suites, 2 Extension Tables; Pedestal Table w/Chairs, Oval Dining Room Set; Coffee Tables; End Tables, Curio Cabinet, Cedar Chests; Corner Cabinet, Bookcase Cabinet, Oak Entertainment Center, White Pine Furniture, Dry Sink; 2 Child Table & Chair sets Used Furniture: Hutch, and Other Used Furniture

• NEW & REBUILT FARM MACHINERY •

New Machinery: General Repair 9' Spring tooth harrow; 770 New Holland Harvester w/table complete with new set of knives, Fisher 150 Gal field sprayer w/Honda engine; DS 1100 Gal. liquid manure spreader; 1100 gal. ELS Manure Spreader; Pequea 110 Manure Spreader w/tailgate on steel; From Cedar Hill, 1-9' Harrow, 2-Fore Carts; 1 w/brakes, 4' Roller Harrow, 8' Dry Hill Manure Pump w/Hyd; White Horse lever steering forecart, Beiler Autoturn Forecart, Iva Field Sprayer, 4 Spinner hay tedder w/Honda engine; From I & J, 1 Rotary Hay Rake, 1 Row Cultivator, 2 Garden Cultivators (1 riding), 2 Flat Bed Farm Wagons on steel; Honda Portable Hyd unit, 3000 PSI Pressure Washer; 1-2-3-4-6 Horse Hitches, Rebuilt Machinery: 9' JD Harrow; 24 Blade KBA Disc; 9' Cultipacker; #56 Kuhn Rake w/Honda engine, NH Hay Rake, NH 273 Baler w/2 Cyl Wis engine; NH 55 Mower; NH 456 Mower; NI 323 Corn Picker, NI 17A Manure Spreader; Oliver 2 Bottom 14" Plow; Pequea 2 Bottom Hyd. Plow; 9' Spring tooth Harrow Dairy Equip; 2 New Sputniks; Rebuilt Milkers, 4-65# Westfalia Bio, 4-65# Delaval, 4-65# Interpuls & W/F Comb; Truck Load of Horse & Dairy Supplies; and other Miscellaneous Farm Machinery. Bakery Byproducts donated by Bakery Feeds; Several used forklifts; Hand & Power Tools. Attention Farmers: The Buyer who purchases the highest total dollar value of Farm Machinery, Dairy Equip., and Farm Supplies will receive from the Fire Co. Free of charge either a used Sputnik or a new Farm Wagon with approx. value of \$1,400.00. If you need a full line of good ready to go farm mach., don't miss this sale.

• MISCELLANEOUS •

Sheds: (1 - 10x12 Workshop, 1 - 8x12 Quaker, 1 - 10x16 Workshop, 1 - 8x12 Vinyl); New Pequea 510 Tilt Trailer, New Pequea 1018, 10000 GVW Deckover trailer w/ladder ramps; Table Shuffleboard; 1 Small Wooden Fire Truck; 1 Limited edition Wildlife painting by Jerome Connolly.

• BUILDING MATERIALS •

New Doors & Windows, Building Lumber, Siding, Metal Roofing, Counter Tops, Exterior & Interior Door Hardware, Cabinets, Cabinet Components and Hardware

• CARRIAGES & BUGGIES •

3 Rebuilt Carriages; 1 Good used Buggy, 1 Good used Spring Wagon, 1 New 2 wheel cart, New Bioplastic check lines, Tie backs & Harness parts.

Consignments Accepted Until Sale Day - Do Not Bring Unsaleable Items
No Tires - No Pets - No Hazardous Materials - No Junk -
No out of State Checks -

LOTS OF Small Items Too Numerous To Mention

Not Responsible for Theft or Accidents
All Items Left After Feb 26, 2000 Will Become the Property of Honey Brook Fire Co \$50.00 Deposit Required on Each Consignment of Used TV's, Refrigerators, Washers, Dryers, Water Heaters, Ranges, or Stoves (Deposit will be refunded upon removal of items & payment from sale
For Information Call the Firehouse: 610-273-2688 or 610-273-2907 or 610-273-7742 or 717-354-5196.

Lots of food & Homemade Baked Goods by Honey Brook Fire Co. Ladies Auxillary

Sale by Local Volunteer Auctioneers AU-0013494 VISA and MasterCard Accepted

"Horst Auction Center" PUBLIC SALE

ANTIQUES, HOUSEHOLD GOODS, COLLECTIBLES & TOOLS

Wed., February 16, 2000
Time: 2:00 p.m.

Location: Sale to be held at the Horst Auction Center, located at the corner of Rt. 322 & Durlach Rd. (approx. 2-1/2 miles west of Ephrata), Ephrata, Lancaster Co., PA.

FURNITURE

Antique Blanket Chest (w/2 Drawers); Empire Bureau; OAK-Empire China Closet (Bowed); Empire Buffet; Mahogany Serving Cart; MAPLE-Dropleaf Ext. Table; Set of 8 Plank Chairs; Bedroom Set (Cannonball Bed); Dropleaf Harvest Table; Slant Front Desk; Hutch; Desk; Arm Chair; Credenza; PINE-Saw Buck Table; 4 Pc. Bedroom Suite; Dry Sink; Bookcase; Trestle Table; Bench; Love Seats; Living Room Suite; Box Springs & Mattresses; Filing Cabinet; Swivel Desk Chairs; Changing Screen; Wooden Kit. Cabinet.

APPLIANCES

Refrigerator; Auto. Washer; Maytag Wringing Washer; Dryers; Freezer; Word Processor; Brass Lamps; Older G.E. Oscillating Fan; Cookware; Griswold Fry Pan; Butcher Pan; Agate Tray; Cigar Boxes.

CHINA & GLASSWARE

FLOW BLUE CHINA; Transfer China Crusoe Child's Plate; Ironstone Compote; Shaving Mug; Set of "Janice" China; Majolica; Set of Strangl Dishware; China Dresser Set; Art Pottery; Stoneware; Kerosene Lamp; Pressed & Pattern Glass, Enameled Glass; Peanut Butter Glasses; Stemware; Depression Tumblers; Princess House Bitters Bottle; Painted Easter Eggs.

LINENS

Braided Rugs; Embroidered Hankie; Antique Hat; Marbles; Books (Antique Reference); Antique Comb Box; Wax Valentine In Dome; Adv. Mirror; Prints.

TOOLS

Chain Saws; Compressor; Router; Hand Tools; Wash Boiler; Milk Box.

Terms: No Out of State Checks Without Prior Approval.

HORST AUCTS.

T. Glenn Timothy G. Thomas A.
AU438L
717) 738-3080
Fax # (717) 738-2132
"VOICES OF EXPERIENCE"

FREIGHT STATION AUCTION

39 Wilson Street, Middletown, PA 17057
Norman Courney RH116-L (717) 944 6537
Terms - Cash or Certified Funds



COMPLETE LIQUIDATION SPORTING GOODS STORE SAT., FEB. 19TH • 10:00 AM

5 S. Union Street, Middletown, PA

Hunting Supplies: Guns, Ammo, Bows, Arrows, Scopes, Black Powder, Camping, Clothing, Rods, Reels, Lures, Mounts, Fish Tanks, Security System, Show Cases, Old Displays, Bow Press, Arrow Jigs, Everything Will Sell.

STORM DATE:

Always Following Week Same Day & Time

717-944-6537 24 HRS

PUBLIC AUCTION

OF FARM EQUIPMENT, SHOP TOOLS & HOUSEHOLD GOODS TUES., FEB. 15, 2000 At 9:00 A.M.

Located 455 Windy Tor Rd Turn off Rt 23 (New Holland Pike) near Lancaster Lab, on Forest Hill Rd 1/2 mile turn left on Windy Tor Rd to sale, Lanc Co., PA

FARM EQUIPMENT: 95 MF Tractor w/Pulley on steel or rubber, 28 in Frick Thresher w/Gear Box, 311 N H Baler 456 Mower, 402 Crimper, MC #9 7' Mower, 28' Zimmerman Elevator w/Hyd Hose & Motor, 256 N H Rake, Farmhand Rake, Case Rotobooter w/65 HP Engine, Pequea 2 Way Plow, Oliver 2 Bottom 12" Plow 2 MC Cultivators, 999 Plateless 2 Row Corn Planter, New Idea #17 Manure Spreader, Grimm Tedder, E L S Liquid Spreader, E L S 8' Pump, Pequea Spreader, 323 Corn Picker w/Wagon Chute, Bin Wagon, 3 Flatbed Wagons, MC Disc Drill, 24 J D Disc Harrow, 9' J D Spring Harrow, 9' Cultipacker, 8' Roller Harrow, Field Sprayer w/ 110 Gal Tank, 2 Horse Hi Clearance Sprayer w/ 110 Gal Tank, 1 Horse Tobacco Sprayer, New Idea Tobacco Planter, Rotary Hoe, 12' Weeder, Auto Turn Cart, Gehl 84 Direct Cut Silo Filler, MC Corn Binder w/Long Loader, 8' Grain Binder, Orchard Sprayer w/Piston Pump 100' Hose, 275 Gal Fuel Tank, 2 Minnich Tobacco Presses, Sizing Boxes, Platform Scales, Liquid Applicator, Berg Manure Auger, 1200 Bushel Wire Corn Crib, Mineral Feeders, Small Round Hay Feeder, Steel Feed Cart 2 Hole Corn Sheller, 8 Set of Work Harness, 1 to 8 Horse Hitch

SHOP TOOLS: Isuzu Power Unit w/Hyd Pump & Generator on Skids, Lincoln Dippak 200 Mig Welder, Edward 6" Iron Hyd Shear, Hyd Pipe Bender, Jig to make Round Hay Feeders, Metal Band Saw, Pipe Cutters & Threaders, Bolt Bin 10" Table Saw, Lots of 045 Welding Wire, Heavy Duty Mortise Taper Drill Press w/Hyd Motor, 1/2" Black Pipe, 16 Gauge Sheet Metal, Acetylene Torch Set

MILKING EQUIPMENT: DeLaval Milker Units, Sputnik, S S Tubs, #78 DeLaval Pump, Bender Washer, Milk Cans

HOUSEHOLD GOODS: Sofa, Kneehole Desk, Bureau Chest of Drawers, Warm Morning Coal Stove, Maytag Washer, Riteway Stove, Large Copper Kettle, many other items not mentioned

Terms by

JONAS S. & LYDIA GLICK

Aucts
Robert E. Jeffrey R & Michael L Martin
717-656-7770
AU000580L
Randall L Ranck
Lunch Available

No Out of State Checks