

(Continued from Page A34)  
 essary permits."  
 Musselman encourages farmers who think they may meet the requirements of a concentrated animal feeding operation to contact their county conservation district.  
 "The first step for the farmer is developing a nutrient man-

agement plan," said Musselman. "Once the nutrient management plan is approved, the farmer should then contact the regional offices of the Pennsylvania Department of Environmental Protection to find out what other permits are necessary."

## PA DHIA District 2 and 4 Meeting Update

STATE COLLEGE, Pa.—PA DHIA is pleased to announce that the district business meeting for districts 2 and 4 will be held on March 9th in conjunction with the 2000 Southwest Pennsylvania Regional Dairy Day. This year the event is locat-

ed at the Mountain View Inn in Greensburg, off Route 30. The PA DHIA business meeting will be held from 12:30 p.m. to 1:15 p.m. PA DHIA members who attend the meeting will have lunch provided, starting at 11:30 a.m.

All members in this area are encouraged to attend. For more information about the PA DHIA meeting or to make a reservation, please contact either Dixie Burris or Libby Gretzler at 800-344-8378.

# Thanks and Congratulations to



LONGENECKER'S  
 HATCHERY, INC.

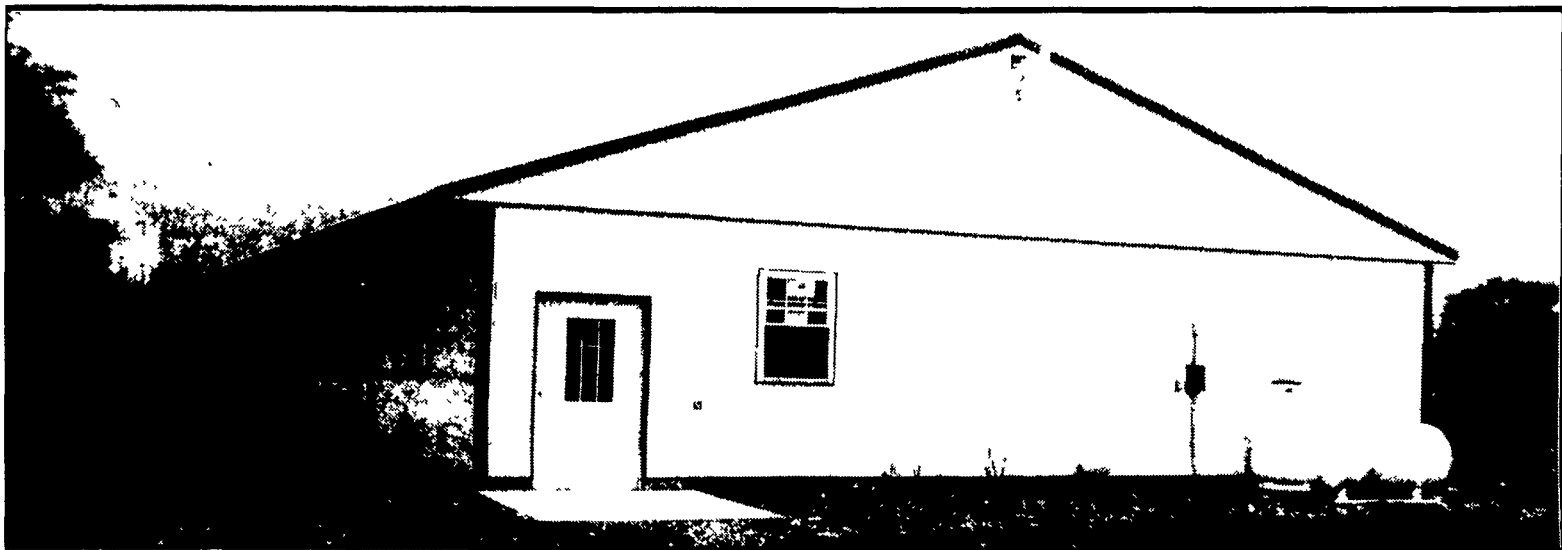
## Edward & Lucy Martin, Millmont, PA

### On Their

# 42'x340' 7,500 Hen Breeder House

**Northeast**  
 agri  
 systems

Quality  
 Building  
 and  
 Equipment



42'x340' curtain sided building constructed by Northeast Agri Systems

### This facility features:

- CHORE-TIME** Bins
- Ultraflo Feeding**
- Nipple Drinkers**
- Fans**

**Shenandoah**  
 front roll nest with  
 automatic egg gathering



**CHORE-TIME WEIGH-MATIC® System**  
 with feed screener

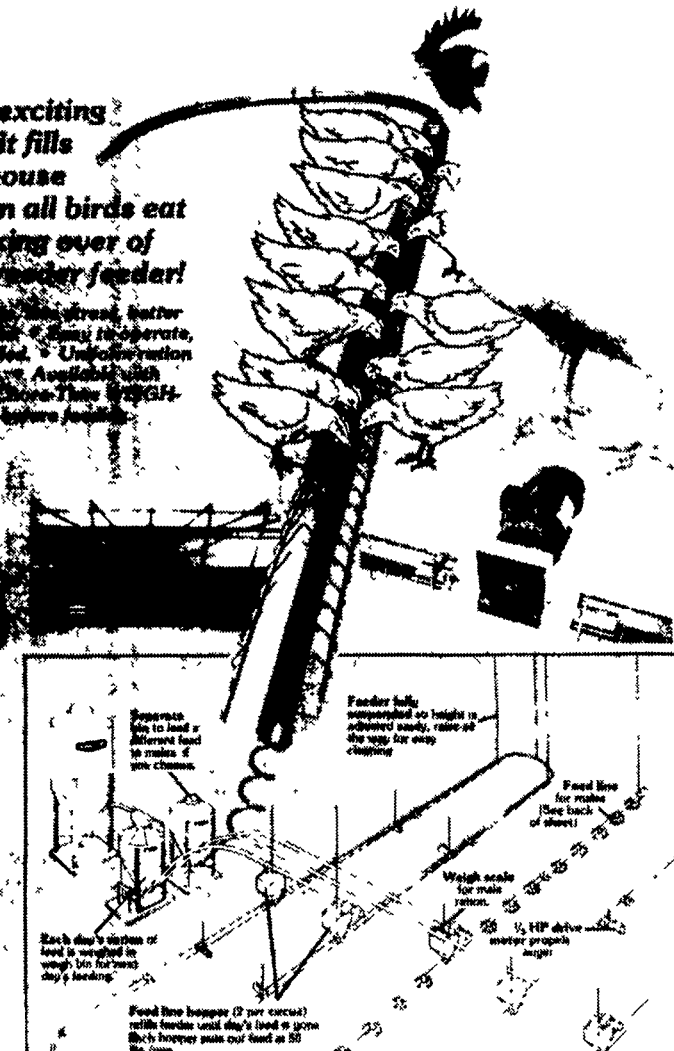
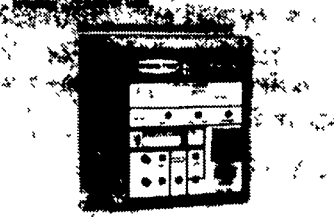
"Building and Equipment by Northeast Agri Systems"

*Chore-Time's new and exciting auger system is so fast it fills all troughs in a 500-ft. house in only 5 minutes — then all birds eat simultaneously. No picking over of feed. It's the ultimate breeder feeder!*

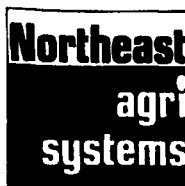
*For fast, efficient, uniform feed distribution, the direct, center auger system is the only one that can operate in a 500-ft. house. No feed line adjustments to make. Uniform distribution throughout the house. Available with 1/2 HP or 3/4 HP drive motors. See the Chore-Time WEIGH-MATIC system in action.*



*Each day's portion of feed is weighed in weigh bins for fast day's feeding.*



Authorized **CHORE-TIME** master distributor since 1982



**Northeast Agri Systems, Inc.**

Flyway Business Park  
 139A West Airport Road  
 Lititz, PA 17543  
 1-800-673-2580  
 (717) 569-2702

Delmarva Office  
 305 University Ave  
 Federalsburg, MD  
 1-800-735-6361  
 (410) 754-9434

Store Hours  
 Monday-Friday  
 7:30 am to 4:30 pm  
 24 Hour-7 Day  
 Repair Service



Contracts Available For New  
 Breeder Housing In  
 Shippensburg/Chambersburg  
 Area, Union, Juniata, Snyder  
 Counties.  
 Contact Jay Sensenig  
 @ 1-800-673-2580

**CHORE-TIME**  
 Dedicated to  
 PRODUCT  
 LEADERSHIP™