

Lancaster Co., PA  
**Circa 1850**  
**Brick Home**  
 4 bedroom 2 baths,  
 large 3-car garage,  
 with guest house.  
 (2) 2 bedroom  
 apartments,  
 very nice  
**\$239,000**  
**814-692-1053**

**135 Acre Dairy Farm**  
 65 Head tie stall barn with  
 pipeline, (2) 18x50 silos,  
 large tool shed, large home.  
 Located in Bradford Co., PA.  
**904/734-5358**

**FINGER LAKES FARMS FOR SALE**  
 Seneca Falls, 537 acres. 160 cow free stall, double  
 8 parlor, 4 upright silos plus bunker, exceptional  
 5BR, 2 bath home. large level fields  
 146 acres. 40 stall barns, w/pipeline milker, good  
 4BR home  
 100 cow free stall barn, 4 Harvester silos, liquid  
 manure system, 150 acres land, more land available  
 64 tie stall barn, pipeline milker, heifer barn, 70 free  
 stalls, 2 silos, plus bunker, excellent 4BR home  
 200 free stall w/drive-thru feeding, double 8 parlor,  
 3,000 gal bulk tank, bunker silos, exceptional 4BR  
 home  
 320 Acre crop farm w/2 homes, large level fields  
 A good selection of other crop & dairy farms in the  
 area  
**William Botcher Associate Broker**  
 5741 Fellier Rd.  
 Newark, NY 14513  
 315/331-5868  
**Harris Wilcox, Inc., Broker**

**POULTRY FARM**  
 Located near Centerville, MD with capacity of  
 201,000. Six houses each having 12 Tunnel Fans  
 and Fogger Cooling 200KW Generator (1 yr old),  
 John Deere Tractor (2 yrs old), John Deere 10 ft  
 Mower (2 yrs old), 10 ft Box Blade (1 yr. old), and  
 John Deere Gator w/Cab (2 yrs old), all go with  
 farm Everything is modern and in excellent operat-  
 ing condition Profitable with little or no money  
 down Significant tax benefits  
**Call Jay at 410/556-1267 or**  
**Pager 410/810-9396 for more information**

**Farm Financing Available**

To buy, build, expand,  
 improve or refinance  
 your farm business to  
 increase cashflow &  
 profitability.

Loans, Mortgages,  
 Leases and Lines of  
 Credit for Real Estate,  
 Cattle, & Equipment  
 from conventional  
 lenders, insurance  
 companies and wealthy  
 private investors.

Even bankruptcies, bad  
 credit and difficult loan  
 situations can be helped.  
**CONFIDENTIALITY**  
 call

**Tom McAbee**  
 Farm Finance Consulting  
 Geneseo, NY  
**716-243-5174**

**Investment Opportunity!** Modern 2-unit, one  
 story ranch on 12 acres along Muncy Creek,  
 Davidson Twp Each side has 2 BR, 1 BA, LR  
 & kitchen. Let this work for you! **\$89,900.**

**11 Acres** on the Bradford/Sullivan Co. line  
 ready for your camp or home. 1/2 open. 1/2  
 wooded, perced and asking **\$35,000.**

**2 BR Weekend Get-Away** on 5-1/2 acres  
 against Wyoming State Forest between Eagles  
 Mere and Laporte - Asking **\$99,900.**

**24+ Acres** in Laporte Twp against Wyoming  
 State Forest. Creek, views and privacy! Short  
 drive to World's End State Park. Asking  
**\$49,000.**

**23+ Acres** along Rt 87 in Colley Twp Good  
 road frontage, short drive to P&G plant and  
 asking **\$49,000.**

**Views From Both Porches** of this 2 BR, 1-1/2  
 Ba. home or weekend retreat located in Fox  
 Twp. Asking **\$52,500.**

**3 BR, 1 BA Camp** on 2± acres in Cherry Twp  
 Great place to bring the gang! Asking **\$59,900.**

**Waterfront at Lake Ganoga.** Approx 100' of  
 shoreline with this nicely wooded lot. Many  
 trails lead to SGL #13 and Ricketts Glen State  
 Park. **\$66,900.**

**Sullivan County Real Estate, Inc.**  
 Eagles Mere, PA 17731  
**570/525-3225**  
 Email scre@epix.net  
 INTERNET <http://www.eaglesmere.com>

**CENTRAL PENNSYLVANIA FARMS, FARMETTES, LAND AND CABINS**

Our Farm and Land Division currently has many  
 farms, farmettes, land parcels, and cabins  
 available in central Pennsylvania We would be  
 happy to send you a free farm and farmette list  
 and/or rural land and cabin list.

See the January 29th or December 25th  
 issues for a complete farm  
 and farmette inventory.

Farm and Land Division  
 Fred Strouse (814) 364-1705  
 Mel Rockey (814) 466-6688  
 Terry Gingham (814) 364-1169  
 Jim Harpster (814) 238-2525

**KISSINGER BIGATEL & BROWER**  
 Realtors  
 2300 South Atherton  
 State College, PA 16801  
 (814) 234-4000  
**1-800-876-3395**

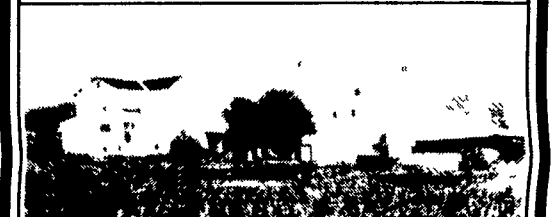
**Northeast Richland Co., Ohio**

160 acre Dairy Farm  
 110 free stalls, Double 3 parlor  
 2 - 20x80 Harvestore  
 1 - 20x60, 1 - 18x60  
 Concrete Silos, 18x76 Calf Barn,  
 50x60 Heifer Barn w/ concrete bunk,  
 40x80 shed,  
 36x50 shop w/ overhead doors,  
 Older 4 BR home, with full bath  
 Extra 40 acres available  
 Shiloh, Ohio-close to Mennonite Church  
**419-895-1366**

**FOR THE BEST INTERNET FARM MARKETING**  
**www.cbur.com**  
**800-669-4925**  
*Internet Slide Shows are on line*  
 Over 1000 viewers per week  
 Email [donmyers@statecollege.com](mailto:donmyers@statecollege.com)

**CALL COLDWELL BANKER**

**FARM & RURAL PROPERTY DIVISION**  
 View These Farms On-Line At  
**www.cbur.com**



**BEDFORD COUNTY - 200 ACRE DAIRY FARM**  
 Modern Free Stall Operation with Parlor - Sound  
 Buildings - Well Maintained Well suited for dairying or  
 as a heifer replacement facility **PRICE REDUCED!**  
 See our complete brochure at [www.cbur.com](http://www.cbur.com) Be  
 sure to view our Internet Slide Show



**BEDFORD CO. - 205 ACRE GENERAL FARM**  
 195 A tillable, productive land, 2 homes, large quon-  
 set barn, easily accessed, very private setting  
 200 Acre Dairy Farm Also Available See our com-  
 plete brochure at [www.cbur.com](http://www.cbur.com) Be sure to view our  
 Internet Slide Show



**230 ACRE BRADFORD COUNTY DAIRY FARM**  
 153 acres of nice laying tillable land, 30 acres hay-  
 land, 9 acres pasture, 27 acres woodland 11 acres  
 site and roads 4 bedroom, 4000 square foot main  
 house, tenant house, 50'x320' loose housing barn  
 with attached milk house and double 8 parlor, 4 silos,  
 50'x250' calf and heifer barn, additional land  
 available **PRICE REDUCED TO \$339,500!** See our  
 complete brochure at [www.cbur.com](http://www.cbur.com) Be sure to view  
 our Internet Slide Show

**CALL TOLL FREE FOR DETAILED BROCHURES**  
**ADDITIONAL FARMS, FARMETTES, VACANT LAND**  
**AND HUNTING LAND PARCELS AVAILABLE.**  
**FREE LISTS.**

**Don Myers**  
 814-432-5111  
**Dale Sherman**  
 814-468-7306  
**Residence Numbers**

**COLDWELL BANKER**  
**UNIVERSITY REALTY**  
 126 E. Foster Ave., State College, PA 16801  
**800-669-4925 Toll Free**

**CAI AUCTIONEERS REALTOR APPRAISER**  
**MEMBER**  
**AUCTION or BROKERAGE**  
**CALL FOR THE ADVANTAGES OF EACH.**  
**WITH 30 YEARS OF EXPERTISE AS A**  
**CAI AUCTIONEER & REALTOR**  
**I CAN HELP YOU MAKE THE PROPER DECISION.**  
**A VISIT TO EXPLAIN WILL COST YOU NOTHING.**

**New Listing This Week**  
**SCHUYLKILL CO.** (Pine Grove area) This new listing is ideal for a young or growing family  
 It has a 200 veal call operation as well as a 77K Boiler operation The bottom line these two  
 fine operations show is impressive It won't take long to pay this one off and live good at the  
 same time The house is a 4 bedroom home with a large living room and eat-in kitchen Be the  
 first the see this one and reap the benefits Owner relocating to northeastern PA with a new  
 church settlement

**Urgent Needs Keep Growing** - Need 100 acres in northern Lanc Co or Dauphin for  
 Game Reserve Plus secluded farmland, smaller tracts of woodland any location Medium  
 priced dairy farms, Dairy farms to rent with option

**SANFORD G. LEAMAN REALTOR** is your full time farm realtor for 30 years and a full time REALTOR  
**AUCTIONEER FOR 30 PLUS YEARS I'M EXTREMELY GRATEFUL TO THOSE OF YOU WHO HAVE**  
**PUT YOUR FAITH AND CONFIDENCE IN ME FOR THIS PERIOD OF TIME I WANT TO CONTINUE TO**  
**BE YOUR FARM REAL ESTATE BROKER & AUCTIONEER**

**My listings turn to "SOLD."**  
**"Don't Wait To Buy Real Estate - Buy Real Estate & Wait"**  
**SANFORD G. LEAMAN REALTOR,**  
 CAI AUCTIONEER, CFS, CMI, GRI  
 101 WHITE OAK DRIVE, LANCASTER, PA. 17601-4842  
**(717) 569-4264 or Toll Free 1-800-836-8113, FAX 717-569-8847**  
**"See Me On The Web" <http://www.lamnauct.com> email: [farmboy@lamnauct.com](mailto:farmboy@lamnauct.com)**

**DEMERE REALTY**  
 199 N. Gardiner Rd.  
 Little Falls, NY 13365  
 Phone (315) 823-0288  
**George Demere, Broker** [www.demereerealty.com](http://www.demereerealty.com)

**#10-A -160A** 1/2 open 1/2 woods on dead end Rd w/Ex. Views of Mohawk  
 Valley Spectacular spot for a new home w/lots of privacy **\$120,000**

**#20 - 209 A.** dairy or hobby farm w/125 tillable - lg 2 story barn w/72 ties, pipe-  
 line, 2 B Tanks, & heifer area - lg pole barn, concrete & bunk silos - V.G. 8 rm.  
 home & 3 car garage w/work shop, 2 wells, 2 ponds & spring - **\$195,000** com-  
 plete or **\$145,000** w/112 acres.

**#239-Good soils & location** - 282 A dairy farm w/137 tillable - 2 story barn w/72  
 on 2" pipeline, calf barn w/31 stalls, heifer barn w/50 stalls, lg. pole barn for stor-  
 age or free stalls, 3 lg. silos w/unloaders, also fully remodeled 11 rm. home - very  
 well kept - & 12 rm. 2 fam. rental house in good cond - also potential gravel bed -  
**\$288,000 - REDUCED TO \$240,000.** Could be bought for **\$198,000** without  
 rental house and 22 acres.

**#249 - 160 A** dairy farm w/75 tillable - 2 story barn w/56 cows on pipeline - 32  
 heifer stalls - 40x96 ft. shed - 22x100x9 ft bunk silo with concrete floor - good 8  
 rm home - attached garage- **\$170,000** Cows & machinery avail

**#629 - 202 A** dairy/hobby farm w/135 tillable - 2 story barn w/70 cows on 2"  
 pipeline w/10 units & 1000 gal B T -20x70 ft concrete silo w/unloader & 36x75  
 ft bunk silo w/concrete floor - remodeled 9 rm home w/pine kitchen & extra lg  
 L R - very quiet location w/yr around creek - also ideal for sheep, beef or heifer  
 operation - **\$175,000**

**#611 - 237 A** dairy farm w/205 tillable - 62 cows on pipeline & two 20x60 ft &  
 one 14x45 ft silos w/unloaders & outside bunk feeder - 2 lg mach sheds &  
 beautifully restored 15 rm colonial home on this Dairy of Distinction Farm -  
**\$450,000 - REDUCED TO \$298,000**

**Century 21**  
**Wilkinson-Dunn Co.**  
 78 Main Street  
 Wellsboro, PA 16901  
**(570) 724-5921**  
 EMAIL [wilk1dunn@aol.com](mailto:wilk1dunn@aol.com)  
 INTERNET [www.century21.com](http://www.century21.com)

**TIOGA COUNTY**

**W-1216-1218** Attention Builders 3 building lots with public sewer  
 available! Within a 3 mile radius to Wellsboro! All partially wooded  
 on great private road Can be purchased separately or as 1 package  
 Call for Details **\$20,000-\$35,000**

**W-1220** Building lot 3 3 acres Northern Tioga County Septic work  
 approved Some protective covenants Middlebury Twp **\$19,900**

**W-1224** Appealing and quaint home on 1+ acre lot 3 roomy bed  
 rooms 2 full baths plus mother-in law apartment Country setting  
 on dead end road 3 outbuildings included Home warranty Tioga  
 Twp **\$87,500**

**W-1228** Building lot across from Oregon Hill ski resort Public  
 water and sewer available Borders community pond plus easy  
 access Build your get away today! Pine Twp Lycoming Co **\$14,900**

**W-1233** Very nice double wide on rented lot 2 bedrooms 2 baths  
 air conditioning beautifully decorated Charleston Township **\$45,500**

**W-1234** Remodeled 2 story on paved road approximately 5 miles  
 south of Wellsboro Roof siding windows are new 3 bedrooms  
 1-3/4 baths Large landscaped lot Delmat Twp **\$71,500**

**Central Wisconsin**



**For Sale By Owner**  
**Marathon Co., Rib Falls Township**

227 Acre Dairy Farm w/183 tillable 53x100 ft 2 story  
 barn w/60 tie stalls and holding area & a back out parlor  
 56 free stall barn w/sand & heifer housing 53x100  
 machine shed w/cement feed storage & shop 5 silos  
 w/unloaders, conveyors, feed bunk Cement cow yard,  
 liquid manure storage 8 unit pipeline w/automatic take  
 offs, 2 1200 gal bulk tanks 2 story 4 bdrm house  
 w 3 car attached garage Second house available 239 head  
 Holstein cattle, on official test 15+ yrs, A1 breeding over  
 30 yrs R H A 23245 milk, 784 fat, 752 pro, low SCC  
 Complete line of machinery

**Listed price complete w/personal property.**  
**\$740,000. Bare farm \$260,000.**  
**715-443-3127**