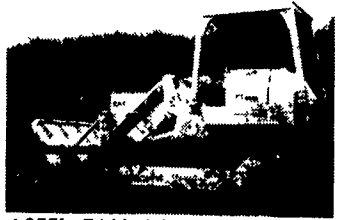


Coming In:

'92 Cat E70B, 2200 Hrs. New Rubber Tracks \$22,000
 '95 Daewoo DH130 LC Excavator
 1500 Hrs. 32,000 Lbs. \$29,500
 '97 Cat TH83 4x4 Telescopic Forklift 8000 lb Capacity,
 41' Height \$55,000
 '94 Prentice 410B Log Loader, Trailer Mounted \$39,000
 '97 NH LX665 Skid Steer, 380 Hrs \$14,250



Cat 955L, 74 Model,
New Chains. \$23,500 or Rent



Cat 966C., Good Rubber,
New Paint \$28,000



91 JD 644E, Bucket & Forks w/Grapple
3rd Valve, 60% Rubber... \$58,000



JCB 214, CAB, 4X4, Standard, 93
Model, New Tires... \$23,500



95 & 96 Volvo 120C, New Rubber, Quick
Coupler, 4.3 Yd Bucket, 2 To Choose
From. \$65,000, \$69,000

**Rentals Available Day,
Week or Month**

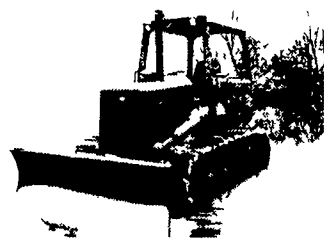
**Financing and Lease
Purchase Available
No Sunday Calls**

JD 644B, 1980 Model \$21,000
Sullair 1050 CFM Compressor
V6, Detroit Diesel, 2 to
Choose From \$3,500/each
Hyd. Plate Compactor to
Fit Backhoe, NEW \$2,500

Ripper For 943
60 KW 3 Phase Generator,
Gas Powered \$1,900
Concrete Crusher For
50,000 Lb. Excavator

Jay Weaver, LLC
Reinholds, PA

717/336-7375, 717/468-3229 Cellular



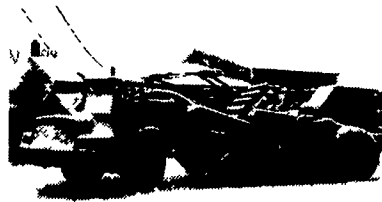
John Deere 1990 650G Bull-
dozer, completely new undercar-
riage, 5000 hour machine, as
good as there is out there to buy -
\$38,750



Case 580B Tractor Loader
Backhoe, transmission problems,
188 Case motor, runs good, will
break up for parts or sell whole
machine for \$5,500



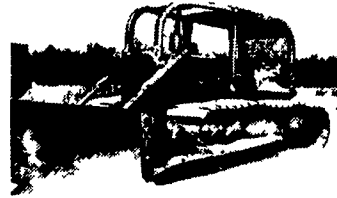
John Deere 544B Articulated
Loader, 21/2 yard, machine runs
good, tight center pin, poor tires -
\$14,500



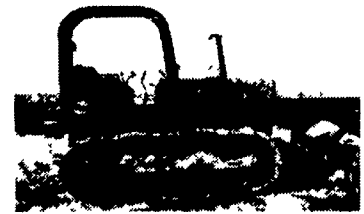
John Deere 860A Elevating Scraper,
overall good condition, runs and oper-
ates well, good rubber - \$16,500



Multiple Ford Mid 70's - Early 80's
Dump Trucks, for parts, good bodies,
3 to 5 yard - Call for Very Cheap Prices



Caterpillar D5 Bulldozer, wide
track undercarriage is 90%, straight
blade with tilt, direct start with
power shift, very good condition -
\$18,500



450C JD Dozer s#288597T, low
hrs, good bottom, 6-way blade
w/rake, exc cond - \$13,995

RED BARN LLC

56 Maple Avenue, New Egypt, NJ 08533

Call 609-758-9152 (in NJ 800-400-8765) or fax 609-758-0060



Skid Steer Loader
Case 1835C,
1500 hrs.,
excellent condition
\$11,000



Toyota FG25
5000 lb. cap. forklift,
pneumatic tires,
120" up, 85" down
\$6,000



600 CFM compressor
Gardner Denver,
screw type,
runs good
\$500



Mitsubishi 23 HP
Farm Tractor, 4 Cyl.
Diesel, With Box Grader
or Roto Tiller
\$3,500



Wisconsin V4
35 hp
V4D engine
\$500



Euclid R30 rock truck
12V71 Detroit power,
new paint,
runs excellent
Offers



Kit Project Tow Behind
Backhoe 11 HP Robins
Engine, Owner Died
Before He Could Finish
It All parts To Finish,
Including Video \$1,500



5000 Gal.
Vacuum
Trailer
\$3,000



5000 Gal.,
5 compartment
steel tank
has hose & reels
\$2,000



Advance
Sweeper/Vacuum
With Hyd. Dump, Runs
Good
\$2,500



Ford TLB
3 Rear Digging Buckets,
New Front Tires, Runs
Excellent
\$12,000



Mason wet saws
14 & 24" complete
w/diamond blades
\$1000-\$1200 ea



J&B manure spreader
3 wheel w/vacuum tank,
Cummins V8 power, Allison
auto, has been sitting a while,
eng runs but smokes, eng has
stuck rings, very well built
\$12,000 OBO



Allis Chalmers HD6EP
power shift, 50%
undercarriage, Only 2300
Hrs., From New 1972, In
Storage 15 years \$9,750



3000' reels of
2" dia. rope,
80 ton breaking strain
\$1,000 per reel



Tillers
All sorts, Big & Small,
You Choose
\$300-\$500



TCM Loader
1 1/2 Yard, Runs, Needs
Brakes and TLC
\$5,000



Yanmar 1700
With Loader and Box
Grader
\$6,995



Satoh 25 HP, 2WD
Tractor, 2 Cyl. Diesel,
Runs Excellent, Needs
Only Grill
\$3,000



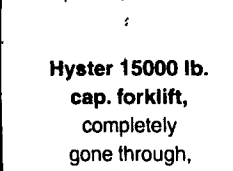
Komatsu D31A
std. gauge, 6 way blade,
runs exc., weak
under carriage
\$13,000



Kubota tractor
was used for pulling
baggage at airport,
3 cyl. diesel eng.,
\$3,500



Kohler,
natural gas generators,
very low hrs.,
Only One Left \$2,000



Hyster 15000 lb.
cap. forklift,
completely
gone through,
you choose forks
\$10,000



Champ Towable
Forklift
10000 lb. Cap Will
fit to 35' can be
towed with dump
truck Completely
gone through
\$10,000



Barrel Rotator
for forklift
\$500



1975 Silent Hoist
100,000 lb. cap. forklift,
completely rebuilt
throughout. Has 40'
container handlers CALL



Jet fire pump
brass 600 PSI,
2 outlets,
need 100 hp eng.
\$300



Tie down straps
2'x10'
\$5 ea. in lots of 10



Guzzler Vacuum
Rodger Trk.
fitted w/jet Rodder & hyd
boom, rear vac. dumps,
1992 mtd. on '85 Mack,
v. nice. \$35,000



Allis Chalmers 7G
track loader, power shift,
runs exc has new chain
but needs pads & small
amt of idler work
\$7,000 OBO

RIVERSIDE EXPORTS INC.

1504A Route 206, Mount Holly, NJ 08060

Tel: (609) 265-1818 • Fax: (609) 265-9666

E-Mail rse@interstat.net

VISA • M/CARD • AMEX