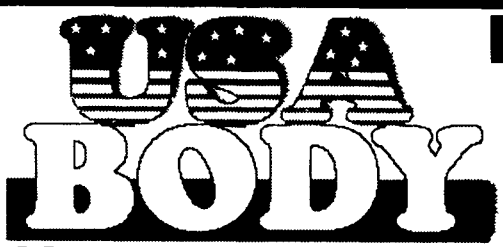


**1 FARM EQUIPMENT**



DeRuyter, New York 13052 - Delivery Available  
**USA ALLStar Ag Truck Bodies**

**WORK-READY UNITS IN STOCK**  
 91 Ford LNT 9000, 300 Cummins, 9 spd, AC, 12 & 40 (235,000 actual miles with 2260 ALLStar Ag Body)  
 91 Mack R Model, (Glider) 350, 5 spd, 12 & 38 on Camelback with 1860 ALLStar Ag Body  
 91 IHC 8100, 300 Cummins, 9 spd AC, with 2260 ALLStar Ag Body  
 89 Ford LTL 9000, 3406B Cat, Fuller 8LL, 16,000 front, 44,000 rears on Hendrickson, Jake Brake, AC with 2260 ALLStar Ag Body  
 88 Mack, 350, 9 spd, Glider kit with 2060 ALLStar Ag Body  
 87 Mack R Model, 350 Mack, 9 spd 12 & 38 on Camelback with 2060 ALLStar Ag Body  
 87 Mack R Model, 350, 9 spd, engine brake with 2060 ALLStar Ag Body

**Ag Body & Truck Headquarters**

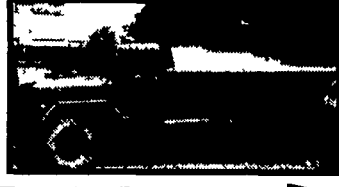


86 Mack R Model, 350 Mack, 9 spd, Dynatard, AC, 12 & 38 on Camelback with 2260 ALLStar Ag Body  
 84 Kenworth, L10 Cummins, 8LL, 18 & 44  
**USED TRUCKS IN STOCK**  
 93 Ford LTA 9000, 350 Cat, 9 spd, 12-40  
 91 IHC 8300, 315 Cummins, 9 spd, AC 40,000 rears  
 88 Mack Superliner, 300, 6 spd, Dynatard, 12-38 on Camelback w/44,000 springs  
 87 Superliner Mack  
 86 IHC, 300 Cummins, 7 spd, Hendrickson  
 82 Mack, Glider kit, 350, 9 spd  
**COMING SOON**  
 2 - 89 Fords, 315 Cummins, 9 spd  
 89 R Model Mack, 350, 9 spd  
 87 Ford, 315 Cummins, 9 spd  
 87 R Model Mack, 350, 9 spd  
 2 - LNT 8000 Fords, long frame cab & chassis

**Want the Best?** Deal with the proven leader in the Northeast *Quality, Service, Inventory, Experience and Integrity.* Just some of the reasons more farmers rely on USA Body for their Ag Truck and Body needs

- ▶ **Mounting & Installation**
- ▶ **Dedicated Truck Mount Liquid Manure Tanks** by Husky
- ▶ **Slide-In Liquid Manure Tanks** built to USA Body specs by Husky
- ▶ **Truck Mount TMR Feeders**
- ▶ **Lagoon Pumps** by Dry Hill & Husky

**All-Wheel Drive Army Truck**  
 Set up for 3600 gallon liquid manure tank



Convert your truck to a nurse unit or field spreader in just minutes with a USA Body Slide-In Liquid Manure Tank



**For Details & Prices Call TOLL FREE 1(888) 278-2639**  
 Inventory, Photos, Prices & More on our web site at [www.usabody.com](http://www.usabody.com)

**EQ. FOR SALE**

'96 JD 6810 Forage Harvester, 1,100 cutter head hrs., KP exc. cond., comes w/6R Kemper head, new main clutch, silage inoculant, applicator-----\$145,000

'99 Richardton 700 dump wagon, 1 season old-----\$10,500

'99 Balzer Mdl. 1016 dump station, 1 season old-----\$9,500

**Reason for sale - owner relocating to Southwest.**  
**(215) 275-6035**

**Coming In**  
 JD 4020 w/Loader;  
 JD 2940 w/Canopy;

**TRACTORS**  
 IH: IH 5088 w/cab, 3600 hrs, 3230 w/loader, 300 hrs, 1486/Cab, 4100 hrs, 1468/Cab, 5200 hrs (V-8), 1086/Cab, 1066/Cab 3700 hrs, 966/Cab, 4500 hrs, 966/Cab, 3700 hrs, 966, 885/Cab, 4x4, loader, 3700 hrs, 885/Cab, 3100 hrs, 856/Cab, 2600 hrs, 695, 4x4, loader, 2670 hrs, 686, 4700 hrs, 674/loader, 4700 hrs  
 JD: JD 4640 w/Cab, 4815 Hrs, 4320 w/Cab, 5700 hrs, 4020/Cab, PS, 5200 hrs, 4020, 3200 hrs, 3040/Cab, 5500 hrs, 2950/Cab, 4x4, 1900 hrs, 2840, 3200 hrs, 2555/loader, 3000 hrs, MF 1135 w/cab, 3300 hrs, MF 1080 w/Cab, 2680 hrs  
**Round Balers:** NH 855, 853, 852, (2) 850, 849, 847, 640, JD 335, Gehl 1310  
**Square Balers:** Ford/NH 316/thrower, NH 316/loader, 310/thrower, (2) JD 336/loader, 327/loader, IH 430/thrower  
**Cultimulchers:** JD 950, 15', IH 315 15', Brillion 13'  
**Grain Drills:** IH 5300, IH 510, IH 5100 Drill, Great Plains no-till  
**Haybines:** NH 488, 472  
**Discblines:** NH 412, NH 5209, JD 1326  
**Hayrakes:** NH 56, IH 34  
**Spreaders:** IH 530, NH 518  
**Planters:** JD 7000 6R, JD 7000, 4 Row, (2) 56, 2 Row, IH 56 4R  
**Chisel Plows:** JD 12 tooth, 3 pt, Bushhog 7 tooth, 3 pt, Case/IH 7 tooth, 3 pt, Glencoe 9T Disc Chisel  
**Misc.:** MF 235, 255, 2300 hrs, 285, 5400 hrs, 1080, 5100 hrs, AC 7040/Cab, JD 310A  
 Backhoe/Loader/Cab, Kubota L245DT Backhoe/loader, 4x4, 900 hrs, IH 4140, Ford 6600/Cab, Side-mount bank mower Also available IH 2250 loader, Woods 15' Batwing mowers, Used 16' Stock trailer, NH 354 Grinder Mixer, Plows 2 thru 5 Bottom, Discs - 5 ft to 20 ft, Hay Inverters & Tedders  
 New Farmco Feeders & Hay Wagons  
 All other types of farm equipment  
 From  
**LEADER'S FARM EQUIPMENT**  
 Rt. 26 South of Everett, PA - along the road to Mench  
**814-652-2809**  
 Closed Sundays & Mondays  
 Call before you come

**We Still Have Snowblowers In Stock**

**GRUMELLI'S FARM SERVICE INC.**  
 929 ROBERT FULTON HWY.  
 QUARRYVILLE, PA 17566  
**717-786-7318**  
 1 5 Mile South Of Quarryville On 222  
 See Salesmen: Tony Grumelli, Don Fichtner

**"Your Need is Our Challenge"**  
**Coopers**  
 John Deere Sales and Service EST. IN 1937  
 Chestertown, MD 410-778-3464 • Cecilton, MD 410-275-2195 • Glasgow, DE 302-834-0114

**Cecilton Location • 1-888-JD DEALS**

**COMBINES & HEADS**  
 Interest Free Waivers Available Till September 1, 2000  
 JD 9600, 4WD w/Duals, 1994 JD 220 Flex Head  
 JD 7720, 1979, good cond JD 6620, 1979  
 JD 444 4RW Corn Head

**DRILLS & PLANTERS**  
 Great Plains 15' No Till Drill w/Markers  
 Great Plains 30' No Till Drill  
 JD 7000, 12-Row Corn Planter w/Dry Fert  
 JD 7000 8RW Planter

**TRACTORS**  
 JD 955 w/70A Ldr w/60" Mid Mower  
 JD 4430 w/Duals, New Paint, Excellent Condition  
 JD 5200, 2WD, 1997  
 JD 6300, Cab, 1,600 Hrs  
 NH 1220 w/Ldr & Finish Mower  
 Mustang 552 Skid Loader, 1987, 807 Hrs, Excellent Condition

**LAWN & GARDEN**  
 1998 JD 345 Lawn Tractor w/110 Hrs, Like New  
 JD 425, 759 Hrs  
 1989 JD 260 w/Power Flo Bagger  
 JD LX188 w/48" Mower  
 JD LX178 w/Bagger  
 1998 Troy Bilt 38" Walk Behind Mower  
 Woods 6160 Front Mower, 48" Deck, Like New

**MISCELLANEOUS**  
 IH 6 Row Cultivator  
 Woods 20' Batwing Mower  
 Woods 315 15' Batwing Mower, Excellent Con **SOLD**  
 IH 15' Flail Cutter, 1991, Like New **SOLD**  
 Tiger Right & Left Hand Flail Mower, Fits Case 5240 Tractor, Good Condition  
 Tiger 74" Side Mower, Fits JD 6300

Call Us On Our Web Page [www.wnc-cooper.com](http://www.wnc-cooper.com)  
**Salesmen: Mike Kern, Bill Dilling**  
**Commercial Sales: Gerry Godfrey**

**Chestertown Location • 1-888-DEERE-4U**

**COMBINE & HEADS**  
 Interest Waiver Till Sept 1, 2000  
 JD 9600 1994 4WD, 1,220 Hrs **\$79,500**  
 JD 9600 1989 4WD, Dual 18 4x42 Heavy Duty Planetary **\$54,000**  
 JD 9400 1994, 659 Sep Hours **\$68,000**  
 JD 9400, 1989, 1,687 Hrs **\$40,000**  
 JD 7720, 1981, 2WD **\$10,000**  
 JD 843 Corn Head JD 644 Corn Head  
 (2) JD 643 Corn Head JD 924 Cutter Bar  
 (3) JD 920 Platform JD 922 Platform  
 JD 224 Flex Cutter Bar (3) JD 220 Cutter Bar

**DRILLS & PLANTERS**  
 JD 7000 6 Row, No Fertilizer  
 JD 7000 Soybean Special, 11 Row  
 JD 750 No Till Drill, 1995, Like New

**COMPACT TRACTORS**  
 Kubota 2250, 2WD Low Hrs w/60" 3 Pt Mower  
 Kubota B8200 Hydro w/Woods RD6000 Mower, Like New **\$6,300**

**MISCELLANEOUS**  
 JD 820 MoCo, 1996, Excellent Condition **\$9,800**  
 JD 215 Disc Harrow, 15'  
 JD 740 Loader, Like New w/Joy Stick Cont **SOLD**  
 Hanson Grain Cart, 450 Bushel  
 Kinze 600 Bushel Grain Cart w/Tarp, Sharp  
 JD 201 Implement Trailer

**TRACTORS**  
 JD 8400 1997, 487 Hrs, 710/70/38 Dual Tires **\$95,000**  
 JD 4850 1987, MFWD, 18 4x42, Rebuilt Engine **\$46,500**  
 JD 4850 1985, MFWD, 20 8x38 Duals **Coming In**

**Salesmen: Bill Cooper, Jack Wright, Buddy Bramble**

**If You Are Looking For A Spreader With Durability & Strength,**  
**YOU NEED A HUSKY FROM BINKLEY & HURST BROS. INC.**  
 (Consider Our Financing To Make Your Needs Possible)

**4000 Gallon Top Fill Tanker IN STOCK**

**IN STOCK - READY TO HAUL**  
 With 28Lx26 Flotation Tires - 5 Year Axle Warranty  
**Trade or Make a \$2,900 Down Payment and Pay the Balance in 36 Monthly Payments of \$398.27 Without Insurance**  
**\$405.99 With Insurance**  
 (Replacement Coverage with \$500 Deductible)

**Let's Get Your Credit Approved Today and Get You Rolling!**  
 (NE 8754)  
**Call Today and Ask for Mary 1-800-414-4705**

**BINKLEY & HURST BROS. INC.**  
 133 Rothsville Station Rd.  
 P.O. Box 0395  
 Lititz, PA 17543-0395  
 (717) 626-4705 1-800-414-4705  
 Fax 717-626-0996 [www.binkleyhurst.com](http://www.binkleyhurst.com)