

48 Chevy truck, 11,000lb, 52k mi, insp, VG orig. cond. 717/755-4725.

'73 R model Mack, single axle tractor, blown head gasket, body excel. \$4000. 570-458-6918

1992 UD dump truck w/ 10-ton Scott dump, fold down sides, 6-spd turbo diesel, just inspected, 22,000 GVW, 12' bed, can haul appx. 6 ton, good condition, \$14,500 OBO. 717/656-8531 Ed Reiff.

'82 GMC High Sierra 6 wheeler dump w/side plow, fuel pincher dsl, \$3,500. 215-249-1826.

1987 Ford E250 Van 302 V8 Automatic O/D AM/FM Tape, 34000 Miles (4)New Tires, Great Shape \$5,800 Firm. 410-592-7643

## Woodcrest Motors

SPECIALIZING IN TRUCKS & VANS  
1200 North Reading Rd., (Rt. 272) Stevens, (Lancaster Co.) PA 17578  
717-336-3130



92 DODGE DAKOTA LE 4x4 6 Cyl., AT, A/C, 75,000 Miles, Grey & Silver \$6,995



94 FORD F150 XLT 4x4 V8, 5 Spd., Black, 57,000 Mi \$12,900



92 CHEV 1500 4x4, Short Bed, Stepside, V8, 5 Spd., A/C, 92,000 Miles, Lt Blue - \$8,995



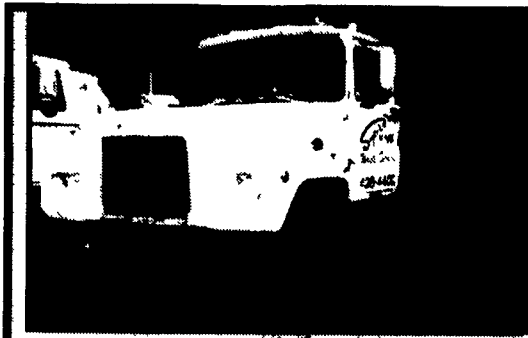
98 GMC SIERRA 1500 SLE Extend Cab, 4x4, 350 Vortec, 5-Spd., Most Options, 86,000 Miles, Dk Red \$17,300



95 DODGE RAM 2500 4x4 V8, 5 Spd., A/C, Dk. Green, 73,000 Miles, \$13,900



93 FORD F150 EXT CAB 4x4 V8, AT, A/C, Dk Blue, 93,000 Miles \$11,995



1984 DM 237  
5 spd., 44 rears, just painted, very good runner, long W.B.  
800-839-3338



94 FREIGHTLINER FL70 CAB & CHASSIS  
5.9 Cummins Turbo Diesel, 5 Spd., 26,000 GVW, 145,000 Miles  
**\$17,500**  
Call 717-336-3130

## Quic'n-Easy

RECEIVER HITCH BY DMI  
The Latest In-Tow-Vation!



- Fits under your truck bumper, mounting directly to your truck frame
- Brings the receiver to your load - extends 7" and swings 12"
- Exclusive Proximity Hook-up - one person gets it right the first time
- Spring "Cush'n" takes the push/pull out of towing, lowering stress on the driver and truck drive train
- Tows whatever your truck is rated to tow - exceeds Class IV certification
- Accepts a variety of adapters drawbar, ball, step-up or step-down, pintle hook and weight distribution system

Never Miss a Hitch Again. **DMI**



Weaver Distributing  
1-800-Weaver-D  
RR2 Box 470, Fredericksburg, PA 17026

## FOR SALE

1990 International Truck Tractor Set Back Front Axle



Model F9370SBA, Date MFG 3/28/90, 3406B Cat (425HP) w/ Jake Brake, RTO - 14715 Fuller Transmission (15 Speed), Spicer Rears (3.91 ratio), Air Ride Suspension w/ Dump Valve, Dual 135 Gallon Fuel Tanks (under sleeper), Wet-Line - large Pump and 100 Gallon Aluminum Tank Under Right Cab Door, 11R 24.5 Tires - (all virgins) - 70%, Aluminum Rims Front & Rear (Budd), 60" Flat Top Sleeper (Walk-in), 224 Wheelbase, Fontaine Air Slide 5th Wheel, Air Dryer & Fuel / Water Separator, Cruise Control, A/C, 1/2 Fender & Chrome Rear Flaps, Extra Lights on Cab & Under Sleeper, Maintenance Record Available, SLN 2HSFEX6R3LC043214

Asking Price \$23,900.00  
Call Donald Martin Today  
(717) 768-8231 or (800) 732-0017

Financing Available Call For Details



97 FORD F250 XL SUPER CAB  
4WD 351 Fuel Inj 5 Sp A/C AM-FM 8800 GVW 1 Owner Truck Dk Blue. 67 000Mi  
**\$18,900**



98 CHEVY K2500 CHEYENNE, 4WD  
350 Vortec, 5 Sp., A/C, AM/FM Cass, Cruise, Tilt, 8,600 GVW, 3 73 Lid, Slip Rear, 65,000 Mi., Red  
**\$16,900**



98 GMC 3500 CREW CAB  
4WD SL 350 Vortec, AT, A/C, AM/FM Cruise Tilt 9200 GVW 4 10 Lid, Slip Rear Local Truck 55 000 Mi, Dark Blue  
**\$21,900**



94 CHEVY K2500  
Extended Cab, 4WD, Silverado, 350 fi, AT, A/C PW PDL Cruise Tilt Cass Redding Utility Body, 8600 GVW, PA 1 Owner, 57,000 Mi., Maroon  
**\$17,500**

## MARTIN'S AUTO SALES

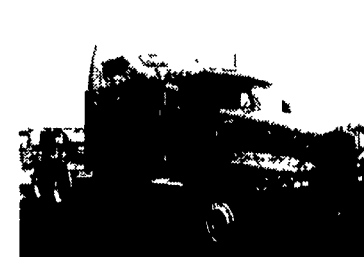
1025 W. Main St. New Holland, PA 17557  
(717) 656-6621

## MOTOR TRUCK EQUIPMENT COMPANY



USED TRUCK SALES  
Carlisle  
717-766-8000

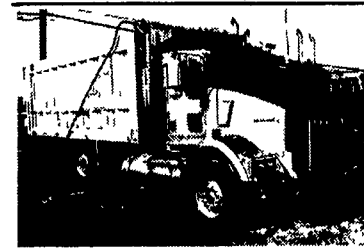
"WE BUY USED TRUCKS" Call: Tim Mitchell (717) 766-8000



1994 Kenworth T600  
Aerodyne II, 425 HP, Detroit 9 Speed Trans., 3.90 Ratio Rears  
**Reduced \$25,900**



1984 Peterbilt  
359, X hood, U/8 Cat, 13 over, 84" custom sleeper, 3.55 rears, 275" W B P.O.R.



1999 T800 Tri Axle  
430 HP, C-12 CAT, 18 speed, 4 11 rears, 19-1/2 Ft J & J, Alum Body  
**\$99,900**



1996 Peterbilt 379  
Cat Powered, 10 Speed Trans., 4 33 Rears, 18-1/2 Ft Cobra Aluminum, Air Suspension, Balance on Engine, Warranty - 5 years/500,000 Miles  
**\$77,500**

CHEVROLET GMC

# Sutliff

GM PARTS  
GENUINE GM PARTS FOR ALL GM VEHICLES  
800-932-0284

Free Delivery Routes In 12 Counties In Central PA  
Call For Specifics

25 PARTS PROFESSIONALS TO SERVE YOU  
ENGINES - TRANSMISSIONS  
A.C. DELCO - SHEET METAL  
ALL IN STOCK AND PRICED RIGHT  
IF YOU NEED GM PARTS  
WE'VE GOT WHAT YOU NEED

## SUTLIFF GM PARTS

13th & Paxton  
Harrisburg, PA



A GM Goodwrench Service Plus Dealer

The Plus means better.

CHEVY TRUCK

OLDS

BUICK

CADILLAC

PONTIAC