

**32 MISCELLANEOUS**

40-180hp diesel engines for repower or power units. 717-464-4461

**Koi R-Ur Fish Farm**  
Many sizes & Many patterns  
**215-536-6076**  
For pickup please allow 24 hr notice

**FIREWOOD**  
15 cords of cut, split, delivered  
**814/667-3434**

**32A ANTIQUES**

Original 11' swab grain wagon sold by W.H. S H River Dillsburg, PA. Good condition original paint unique piece one of a kind. (717)776-7549

**33 RECREATIONAL VEHICLES**

1992 Mach I Formular Ski-Doo snowmobile, 1450 miles, excel cond, \$2500 obo. 717-933-9307 717-866-8658

Used snowmobiles & parts & accessories for Ski-Doo snowmobiles. 717-249-1046

**35 TRUCKS AND TRAILERS**

93 Dodge PU 3/4 Ton 4x4 Cummins Turbo \$10,500 Leave Message 717-548-2834

Storage Trailers For Sale. \$100/each. 302-653-5539

'88 Peterbilt 377, 36" bunk, 350 Cat, 3 line hyd \$12,000. '91 Eagle Bridge trailer, 41' long, 60 cu yd, self unloading conveyor, \$13,000. 410-778-1403.

1983 Western Star liquid manure truck, 350 Cummins, 15-spd RT12515 trans, 20k steering axle, 44k rear axle, 5:29 ratio, flotation tires, double pumps, vacuum & pressure system, 8" side load, 8" hyd. boom load, top load, good condition, \$18,500. 717/866-7822.

'99 Dodge 3500, 15 pass., 5.9 Magnum, auto, PS, PB, PW, PM, PDL, cruise, tilt, dual air, AM-FM cassette, privacy glass, dark green, 25,000 miles w/ balance of factory warranty, \$19,900. 717-733-2873

1995 Ford F-450 XLT power stroke diesel, loaded, 5 speed w/14' flatbed and rack over cab, 65,000 miles, asking \$21,000 (570)345-4882.

'96 Chevy Silverado 2500 extended cab, 2WD, 350 Vortec, auto, PS, PB, PW, PDL, cruise, tilt, air, AM-FM cassette, 373 ratio, 8,600 GVW, 54,000 miles, new radials, excellent condition, \$15,900. 717-733-2873

98 Featherlite Stock 20'Lx7'Hx7'W Center Gate, Rubber Mats \$10,500/obo. must Sell 301-695-9020.

40' flat 76 Trailco w/ winch track, 22.5 tires, good cond, \$2,600 OBO. 717-933-9183.

1976 Mack R model 300+ rebuilt 6 yrs ago, 10,854 mi, air ride suspension, 5spd trans, P/S. 1978 city aluminum dump trailer, high sides, good floor, coal chute and tarp, 28', \$16,500. Jersey Shore, PA, 570-398-7844.

1988 Mack MS250, 6 cyl. turbo dsl, 24' Grove roll-back, full air brakes, air drive, block heater, 72,000 mi, \$11,000. 410-877-9889.

'87 Nissan XE king cab, 4 cyl., 5 spd, PS, air, AM/FM cassette, low mileage, excellent condition, \$3,975. 717-733-2873

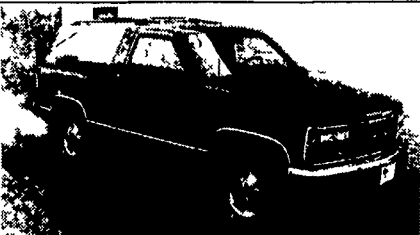
'93 Ford XL F250, 300 EFI, 5 spd, PS, PB, air, AM-FM, 8,600 GVW, 73,000 one owner miles, dark blue, \$7,900. 717-733-2873

1979 Hill air slide lime trailer, VG cond. 724-357-9696 days, eves 724-349-1877.

Kenworth 8-bag airride cut off \$1200; (6) 22x5 Alcoa wheels Pete style \$150/ea; 85 Chevy K-5 Blazer 4WD \$4000 OBO. 717/235-2618.

'73 Diamond Reo tractor, 318 Detroit diesel, 13 spd, wetline. 215-234-4583

**TRUCKERS**  
27' HD RATCHETS.....\$13.95  
WINCH STRAPS.....\$12.95  
RUBBER T. STRAPS.....54¢  
REFLEXITE RED/WHITE TAPE.....82¢/Ft.  
**TIRONIE TAPPS**  
(800) 874-2928 • FAX: (570) 584-3127



**1992 SILVERADO BLAZER 4X4**  
5.7, Auto, PS, PB, PDL, PW, P. Seats, Tilt, Cruise, A/C, 104,000 Miles, Black, 4 New Tires, Excellent Plus Cond.  
With 6 Mo 7500 Mi Extendable Warranty  
**\$11,995**

**REBER AUTO CO.**  
Lincoln Ave. & Cumberland Sts.  
(for 29 yrs.)  
Lebanon, PA 717-273-5941

**CASH FOR USED DIESEL TRUCKS!**

WE NEED 1/4 TON TO ONE TON:  
• FORD DIESELS • DUALIES  
• SUPERCABS • DUMPS  
• CREW CABS • UTILITY BODY  
• DODGE CUMMINS • FLAT BEDS  
• 2WD OR 4X4 • CAB & CHASSIS  
• SUPER DUTIES

**LOW MILEAGE ONLY PLEASE**

Before you sell or trade your diesel in somewhere else for LESS. CALL US!  
We Pay More for Used Diesel Trucks Than Anyone.  
717-949-2000 TRY US!

OR 610-678-3243 Ask for Smokey or Kay **KELLER BROS.** RD 7, Box 405 Lebanon, PA 17042



**1993 BRONCO CUSTOM 4X4**  
5.0 V8, 5-Spd, PS, PB, A/C, AM/FM, 83,000 Miles, Maroon, Good Clean Unit  
**SPECIAL PRICE \$7,975**

**REBER AUTO CO.**  
Lincoln Ave. & Cumberland Sts.  
(for 29 yrs.)  
Lebanon, PA 717-273-5941

**ALUM-LINE, INC.**

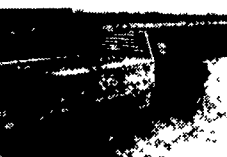
The Leader In Heavy Duty Construction  
**"More Trailer - Less Money"**



All-Aluminum Livestock Trailers, Bumpers & Goosenecks • 8' to 39' Lengths • Double Deck Package Available

**"The Finest Truck Bed You'll Own"**

All-Aluminum Stake Body Beds • 6' To 24' Lengths • Many Standard & Optional Features • All Types of Tool Boxes



Also from Alum - Line, a complete line of aluminum pickup boxes and truck tool boxes

**Wolfe Auction**  
9801 Hansonville Rd.  
Frederick, MD 21702  
800-443-9580



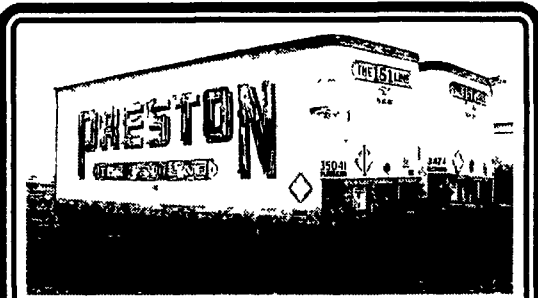
**1972 DIAMOND REO TRUCK**

With 4800 gallon vacuum tank, setup to haul liquid manure, 290 Cummins engine, 7 speed, Fuller trans., 44,000 lb. rears, has flotation tires.....\$19,500  
Without flotation tires.....\$17,000  
Call for more information. Please no Sunday calls  
Lancaster County Phone (717) 733-8528



**1983 Mack R688 Tri Axle Dump**

Mack 315 H P, 12 Spd D R, 44 Rears, 18 Front, Recent Engine Rebuild, Rears Rebuilt, New Brakes, Drums, Tires, Lift Cyl, Hinges, New Paint, More  
**\$27,500 - 215/679-3476**



**(14) 28'X96" Pup Trailer \$1,950**

**(4) 28'X102" Pup Trailer \$2,850**

Curry Supply Co., Curryville, PA  
1-800-345-2829

**Featherlite Trailers**



Model 8200 - 8' x 28' stock trailers Available In Many Sizes

**All Aluminum • 6 Year Warranty Titan Flat Beds**

Pine Shavings  
Peanut Hulls

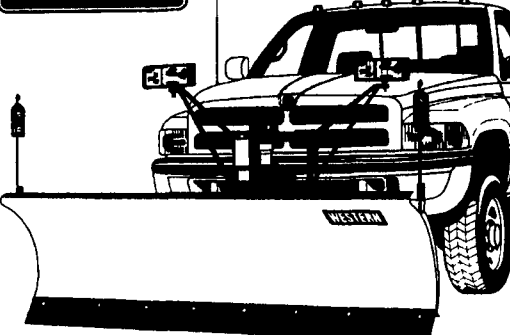
**48' Self Unloading Trailers**



**HUFFMAN**

TRAILER SALES AND LITTER SERVICE INC.  
4124 North Valley Pike  
Harrisonburg, VA 22802  
Phone 1-800-825-2545

**TIRED OF THE SNOW YET?**

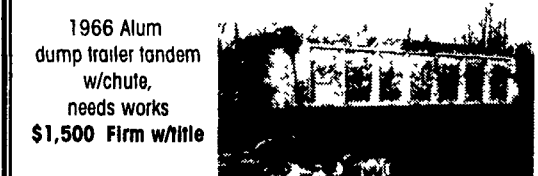


**Yarnall's Equipment Co., Inc.**

4171 Horseshoe Pike (Rt. 322)  
Honey Brook, PA 19344  
Toll Free:  
**1-888-900 - SNOW (7669)**



1974 Dodge 100 pu, 4x4 auto 318 motor, new insp., Blue, heavy springs, sharp & clean, some rust  
**\$2,000 w/title**



1966 Alum dump trailer tandem w/chute, needs work  
**\$1,500 Firm w/title**



1974 R700 Mack tandem V-8 375 w/AC PTO - Cab in great shape, needs motor  
**\$3,500 w/title**

• 1973 Mack 'R' tandem w/AC, w/PS, PTO, needs bodywork, drivetrain good, 375 V-8 diesel.....**\$2,500**

• 1974 Schure 30 ft. flat bed, needs work, has load of scrap with it.....**\$1,500 title**

• 1985 DeRose 14x70 mobile home, 2/Bed, 2/F. baths, very good condition, also 12x12 deck & 10x10 deck w/4 person hot tub..... **\$10,000**

• 1984 Chevy Cavalier type 10 needs work... **\$400**

• Fence Post 3 split rail about 300 ft. or 40 sections and single post, 100 total.... **Best Offer**

• Homemade fireplace for shop 1/4 steel door 2x3 4 ft. deep, currently heats 40x50 shop..... **\$1,000 w/pipe**

**717-354-0887**

please leave clear message

**Eagle Bros. Used Cars**

Lebanon, PA 717-228-0558

'98 Ford Taurus SE, 24,000 Miles, 3.0L V6, Beautiful Green w/Grey Int, All Pwr Options  
**February Special \$9,999**

'99 Ford Contour SE, 1,980 Miles, 4 Cyl., Auto, Steel Blue w/Dark Blue Int., Pwr Windows & Lock, Cruise, Cassette..... **February Special \$9,495**

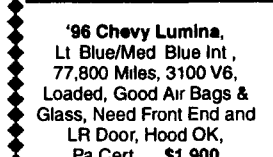
**REBUILDABLES**



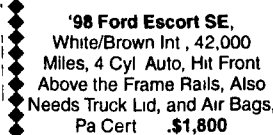
'99 Ford Taurus SE, 500 Miles OHC V6 Auto, Red w/Brown Int, Light Damage To Front, Right Side Doors and LR 1/4 Damage Some Parts Available, PA Cert **\$3,900**



'93 Mercury Sable GS, 3.8L V6 Auto, 77,000 Miles, Lt Blue Int & Ext, Loaded, Very Clean Car, Very Easy Fix, Mostly Bolt on, PA Cert **\$2,900 with parts**



'96 Chevy Lumina, Lt Blue/Med Blue Int, 77,800 Miles, 3100 V6, Loaded, Good Air Bags & Glass, Need Front End and LR Door, Hood OK, Pa Cert **\$.1,900**



'98 Ford Escort SE, White/Brown Int, 42,000 Miles, 4 Cyl Auto, Hit Front Above the Frame Rails, Also Needs Truck Lid, and Air Bags, Pa Cert **\$.1,800**

'95 Chevy Beretta, Dark Blue with Blue Int, 35,000 Miles, 3100 V6, Automatic, Tilt, Cass, PDL, Air Bags & Glass Good, Needs Front End, Pa Cert **\$.2,600 with parts**

'97 Buick LeSabre, 3800 V6, 16,300 miles, Lt Blue with dark blue int., Loaded, Needs front end, two right doors, windshield & center posts, glass front & rear, Air bags good, Call for Details ..... **\$3,250**

**Will Repair - Will Change Colors**