

**MUSSER & ASSOCIATES, INC.**



245 Fetterville Rd. East Earl, PA. 17519  
717-354-7561

**"The Pole Building Specialist"**



24' x 40' x 10'  
2-9' x 8' Garage Doors  
1-3' Service Door  
**\$7,795**



30' x 48' x 12'  
1-10' x 12' Slider  
1-3' Service Door  
**\$10,500**



40' x 80' x 14'  
1-16' x 12' Garage Door  
1-12' x 12' Slider Door  
1-3' Service Door  
**\$22,900**



48' x 96' x 16'  
1-12' x 14' Garage Door  
1-3' Service Door  
**\$31,500**

All Prices are for buildings fully erected on your site  
Many other sizes available. Call for FREE estimates.  
**800-331-1875**



Call **717-354-4740** Will Travel



**J & K Homes & Buildings**

Specializing in Post Frame Construction

Horse Barns • Riding Arena  
Garages • Equipment Storage  
Self Storage

Customized Buildings

For a Free Estimate or Building Information Call  
**717-789-4245**

Serving from York Co. North to Center Co.  
& Huntingdon East to Lebanon Co. and  
Anywhere Between.

Will Travel To Other Areas If Needed



**Pioneer Pole Buildings, Inc.**

Toll Free 1-888-448-2505

www.pionpole.ppg.com



24x32x10 \$5,900 installed!! 30x40x10 \$7,900 installed!!  
30x32x10 \$6,900 installed!! 30x64x10 \$12,499 installed!!  
Add an extra sliding or overhead door for \$500

All 4 include  
1- 3'x6'8" steel 6 panel insulated entry door  
1- 10x10h sliding door or 1-9x8h overhead garage door (your choice)  
25 year warrant Everlast painted steel (your choice of color on roof, sides, trim)  
Steel roofing and siding is G-100 painted and heat roll-framed by Everlast Inc  
40# per sq ft snow load on trusses 2x6 top and bottom chord  
#1 southern yellow pine carriers  
All materials, labor, delivery, taxes included!!! No hidden costs!!!  
Company Owned Crews Top Quality Workmanship  
Over 20 colors to choose from Top Quality Materials  
Quick construction date Top Quality Service

**BEFORE YOU BUY GIVE PIONEER A TRY!!!**

**WINTER SPECIAL 24x24x8**

1-16x7 Insulated Garage Door  
1-3'x6'8" Insulated Entry Door  
Installed for \$4,900



Financing Available

Other Sizes Available



Call For Free Literature or See us at www.pionpole.ppg.com



**POLE BUILDINGS**

CUSTOM DESIGNED & ENGINEERED

□ COMMERCIAL □ AGRICULTURAL □ RESIDENTIAL  
HORSE BARNs • ARENAS • GARAGES  
IMPLEMENT SHEDS

**BYLER CONSTRUCTION**

Delbert Auken

RR 1 Box 514A  
Womelsdorf, PA 19567

FREE ESTIMATES  
**610-589-2683**  
**FAX (610) 589-1492**

**WINTER SPECIAL**  
**Affordable Metal Roofing & Siding**  
29 Gauge 36" Coverage Price Per Sheet

	1-49 Pcs.	50+ Pcs.	100+ Pcs.	200+ Pcs.
530 Pcs..... Rainbow Galvanized.....16'	\$10.40	\$9.88	\$9.36	\$8.84
250 Pcs..... Primed Galvanized.....16'	\$12.00	\$11.40	\$10.80	\$10.00
450 Pcs..... Dull Galvanized.....16'	\$12.00	\$11.40	\$10.80	\$10.00
900 Pcs..... Dull Galvanized.....12'	\$9.00	\$8.55	\$8.00	\$7.00
1200 Pcs..... Primed Galvanized.....12'	\$9.00	\$8.55	\$8.00	\$7.00
2000 Pcs..... Rainbow Galvanized.....12'	\$7.80	\$7.41	\$7.00	\$6.00
2000 Pcs..... Galvanized.....12'	\$10.20	\$9.69	\$9.18	\$8.00
254 Pcs..... Galvanized.....16'	\$13.60	\$12.92	\$12.24	\$11.00
215 Pcs..... Beige.....12'	\$13.80	\$13.00	\$12.00	\$11.00
504 Pcs..... Brown.....12'	\$13.80	\$13.00	\$12.00	\$11.00
200 Pcs..... Charcoal.....12'	\$13.80	\$13.00	\$12.00	\$11.00
300 Pcs..... Evergreen.....12'	\$13.80	\$13.00	\$12.45	\$11.83
300 Pcs..... White.....12'	\$13.80	\$13.11	\$13.11	\$13.00
250 Pcs..... Red.....12'	\$13.80	\$13.11	\$12.50	\$12.50
500 Pcs..... White(Paint Peeling).....16'	\$14.55	\$13.82	\$13.00	\$12.35
200 Pcs..... Rake & Corner Blue/Gold.....16'	\$8.00	\$7.00	\$6.00	\$5.00

Discount Prices based on length and color - While Supply Lasts

Must mention this ad for specials. Ends 4/15/00

All sold as-is. No returns. No Warranty.

**A.B. MARTIN ROOFING**

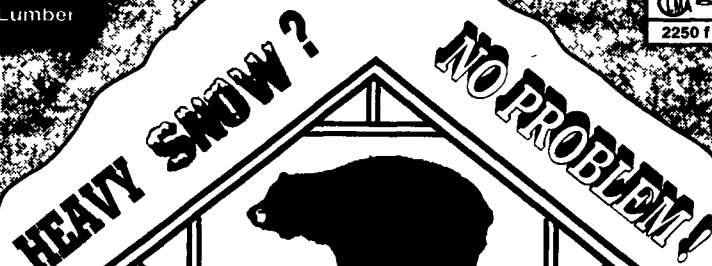
Metal Roofing & Building Supplies  
150 Slate Road, Ephrata, PA 17522  
717-445-6885 800-373-3703  
FAX 717-445-7893



Mon.-Fri. 7 a.m.-5:30 p.m.; Sat. 7-11:30 a.m.

It Pays To Use MSR Lumber

MACHINE STRESS RATED  
SPS-2 S-Dry  
2250 1.9E



R.D. #3 Box 370-A1 • Cogan Station, PA • 17728

**BLACK BEAR TRUSS CORP.**  
"OUR TRUSSES BEAR UP"

ON SITE IN TEN DAYS

- ✓ Laser-QUICK } with MSR-SPF Lumber
- ✓ Laser-STRAIGHT } with MSR-SPF Lumber
- ✓ Bull-STRONG } with MSR-SPF Lumber
- ✓ Crane Optional with Delivery
- ✓ Cellular Phones in all Delivery Trucks



DOUBLE CANTILEVER



FLOOR TRUSSES



Up To 60' Clear Span

GAMBREL ATTIC



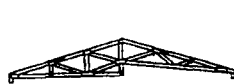
S86 DOUBLE HOWE SCISSORS



DUAL SLOPE (DOUBLE PITCH)



ROOM IN ATTIC



STUDIO WITH TWO BEARING POINTS



3 PIECE RAISED CENTER BAY



UP TO 80' CLEAR SPAN

HORSE BARNs • RIDING ARENAS • COMMERCIAL & RESIDENTIAL



HOURS  
Monday-Friday  
8:00am to 6:00pm  
Saturday By Appt.

For a FREE Quote  
Call (570) 998-2391  
or 1-800-326-9689  
Fax (570) 998-9875

5

**GRAIN EQUIPMENT**

**BROCK.**

Grain Bins  
Hopper Bins

Post & Frame  
Buildings



Bucket Elevators



1248 SOUTH MOUNTAIN ROAD, DILLSBURG, PA 17019

Pre-Engineered  
Steel Buildings

Sales • Installation • Service



Grain Dryers