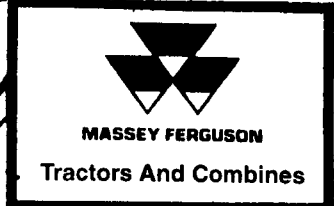


SINCE 1936

M.M. WEAVER & SONS, INC.



Leola, PA 17540 Phone: (717) 656-2321

Located: 4 miles West of New Holland on Rt. 23, 1 1/2 miles Northeast of Leola on the No. Groffdale Rd., 1 mile on the right, opposite Groffdale Mennonite Church.

USED COMBINES

1996 MF 8570 4x4 Combine, 1247 Hrs, w/6 Row 863 Corn Head	\$130,000
1995 MF 8570 Combine, 1138 Hrs	\$78,000
1994 Case IH 1688 Combine, 418 Hrs, w/8 Row Corn, 15' Flex Head, and 20' Flex Head	\$148,000
1991 MF 8460 Combine, 3254 Hrs w/Hillside	\$65,000
1990 MF 8460 Combine, 2649 Hrs	\$55,000
1990 MF 8460 Combine, 2744 Hrs	\$55,000
1990 MF 8460 4x4 Combine, 4026 Hrs, w/Hillside	\$48,000
1984 MF 860 4x4 Combine, 2479 Hrs	\$17,500
1981 MF 860 Combine, 3400 Hrs	\$9,500
1980 MF 760 Combine, 3647 Hrs	\$3,500
1979 MF 760 Combine, 1472 Hrs	\$6,000
1981 MF 850 Combine, 3187 Hrs	\$13,500
1978 MF 750 Combine, 4955 Hrs	\$3,500
1979 MF 550 Combine, Just Rebuilt	\$12,500

USED TRACTORS

MF 204 Forklift, 10' Shuttle Trans	\$4,500
1966 JD 3020 Gas, Power Shift, Narrow Front	\$5,000
MF 3090, 2WD, Cab, 95 HP	\$18,500
Ford 800 Gas With Loader, 40 HP	\$4,500
MF 1155 Cab Tractor, 140 HP	\$8,500
MF 3140, 4x4, 115 HP	\$24,800
White 6125 4x4 Cab with Loader, 124 HP	\$46,000
Belarus 922 4x4 Cab, 92 HP, 1300 Hr	\$9,500
MF 375 4x4, 63 HP	\$14,800
MF 30B Diesel with Loader	\$8,900
White 80 Four Wheel Drive, With Loader	\$18,800
MF 2745	\$12,500
MF 3650 4x4, 130 HP	\$32,000
MF 1155 Tractor, 140 HP	\$11,500

RENTAL AND DEMO MODEL TRACTORS

MF 4270, 2 Wheel, 18x6 Trans 99 HP	\$33,000
MF 399-4 18 Speed Trans., 95 hp	\$34,000
MF 390 T-4 18 Speed Trans, 80 hp	\$32,500
MF 8160 4x4, 180 HP	

USED HARVESTERS

840 4x4 Corn Cracker 30 5R32 Tires, 1400 Cutter Hr 6 Row Kemper Head	\$162,000
1999 Claas 840, 4x4 Harvester, Auto Lift, RU450 Corn Head, 10' Hay Head	Coming In
1999 Claas 880 4x4 Harvester, 503 HP Overdrive Trans, 550 Cutter HR, 12-1/2' Hay Head, Claas 6 Row Independent Corn Head	Coming In
New Holland 1890 S P Forage Harvester, 4 Wheel Drive, 4 Row Corn & Hay Head	\$13,800
New Holland FX25 Harvester 1500 Cutter HR, Corn Cracker, 4 Row Corn Head, 10' Hay head	\$129,000
Gehl 1060 Harvester with 3 row Corn Head and 7 1/2' Hay Head With Metal Detector	\$8,900
Claas 4-6 row Corn Heads in Stock "Row Heads"	CALL
83 New Holland 1900 4-Row Auger Base Corn Head with Hay Pickup, 1562 Hrs	\$34,000
1984 NH 2100 Harvester, 4x4, 3400 Hr, Hyd Outlets, 4 Row Auger Base With Hay Pick Up	\$49,000
1995 JD 3970 Harvester With 3 Row Corn Head and Hay Pickup	\$16,900
JD 3960 Harvester, 2 Row Corn Head, 7' Hay Head	\$7,800
JD 3950 Harvester, 2 Row Corn an Hay Pickup	\$10,500
709 Uni System with 868 Harvester and 4x4 30" 4-row corn	\$19,500

MANURE & FEEDING EQUIPMENT

Lucknow 285 TMR Mixer Wagon	\$7,500
Gehl 7210 TMR Mixer Wagon	\$4,900
Lucknow 220 TMR Mixer Wagon	\$12,500
Lucknow 285 TMR Mixer Wagon	\$4,900

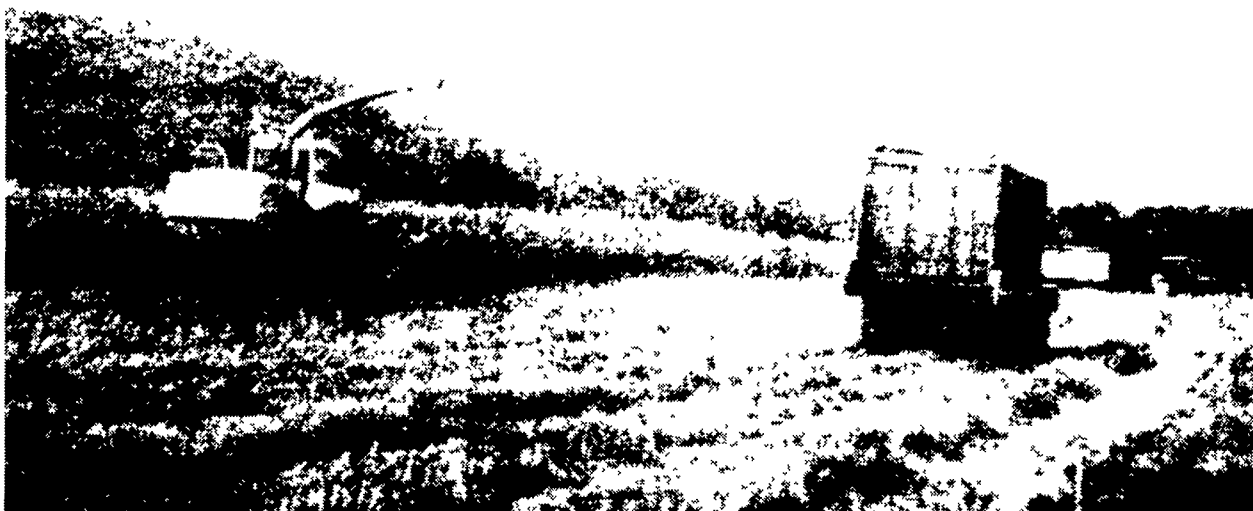
HAY EQUIPMENT

Claas 46 Baler 4x4, Net Twine, Used 1 Yr	\$14,900
New Holland 650 Round Baler 46x72	\$8,500
1200 Claas Sq Baler 27"x48"-8' Demo Model	\$45,000
JD 335 Round Baler, 46x51	\$7,800
NH 634 Round Baler (Like New 500 Bale)	\$9,600
Claas 66 Baler 4x5	\$9,000
Hesston 550 Baler 46x75	\$7,900
Demo Vicon 1511E 5x6 Round Baler	\$9,900

MISC. EQUIPMENT

Westfield Auger, 10"x70', PTO Driven	\$2,600
JD 205 Rotary Cutter, 5'	\$475
Brady 5' Flail Shredder	\$2,200
Brady 12 Ft Flail Shredder	\$3,800
Tye 10' No Till Grain Drill	\$8,500

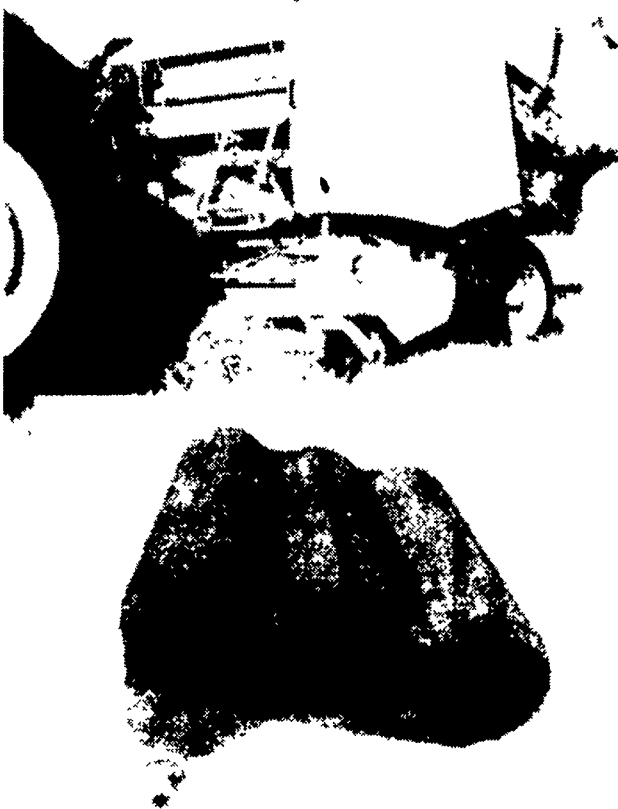
Forage Harvester Performance Redefined - by CLAAS



Here's a good way to get through wet spots and keep truck on high ground. Photo shows a Claas 880 Havvester, owned by Paul Dotterer & Sons, Mill Hall, PA, working at Ag Progress Days this year. The truck drove 20 rows from the harvester.

INTRODUCING THE ROLLANT® 250 WITH MAXIMUM PRESSURE SYSTEM

• Hay or straw • Heavy duty, high capacity



FIXED CHAMBER ROUND BALER

- Dense 4' bales
- 83" wide pickup standard
- ROTO CUT® model available
- Double twine wrapping standard, ROLLATEX® net wrapping optional



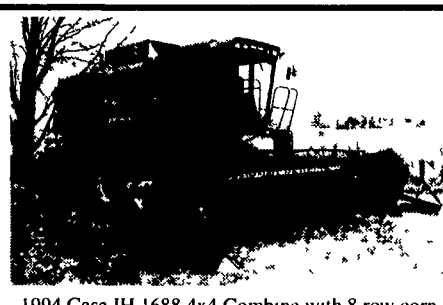
Meeting all your harvesting needs!

MPS

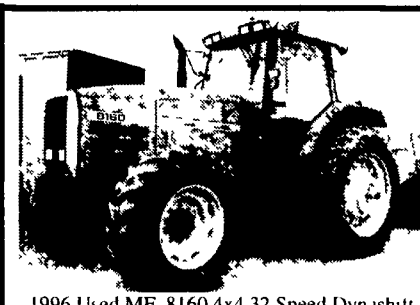
- Maximum pressure is achieved with the new hinged roller system



Case IH 7240 4x4, 195 HP, 1100 Hr
\$68,500



1994 Case IH 1688 4x4 Combine with 8 row corn 15' flex head, 20' flex head, 400 Hr
\$148,000



1996 Used MF 8160 4x4 32 Speed Dynashift, 850 Hrs
\$68,500