

Public Auction Register

Closing Date Monday 5:00 P.M.

of each week's publication

Internet Sale Register will be updated

every Sat. at 2:23 P.M.

ATTENTION Auctioneers

All sales register info needs complete address, street, town, county & state.

SAT APR 1 - 10AM Three Rivers Frank Shepard Woodbury Ct Retiring Potato & Crop Farmer Phil Jacquier Inc, Auct 413-569-6421 Fax 413-569-6599 Email phil.com@jacquier.auctions.com
SAT APR 1 11AM JuVindale Invitational and Spring Promise Show Calf Sale - hosted by Vincent and Juliet Wagner - S Ramona Rd Lebanon Pa Harry

H Bachman, auct
SAT APR 1 - 11AM Reserved for retirement auction of modern machinery Steuben Co NY Pirrung Auctioneers, Inc
TUES APR 4 - Fat Cattle Sale Carlisle Livestock Market Inc 548 Alexander Spring Road Carlisle, PA
TUES APR 4 - 7 45PM Feeder Cattle Sale Carlisle Livestock

Market, Inc 548 Alexander Spring Rd, Carlisle, PA

WED, APR 5 - 9AM Lumber & Building Supplies To be held at Wolgemuth Auction, 109 N Maple Ave, Leola, Lanc Co, Pa 717-656-2947

WED, APR 5 - 6 30PM Winross, Hess, Farm Trac & Toys To Be held at A&C Dffenbach Auction Inc, 100 W Jackson St, New Holland Lanc Co, Pa 717-355-7253

THURS, APR 6 - Real estate, 1 ac wooded tract w/split level home, 2 car garage, 27'x32 shop Jeffrey & Christine King Kline, Kreider, Good aucts

FRI APR 7 - 10AM Horse Sale, New Holland Sales Stables, 101 W Fulton St, New Holland, Pa

FRI APR 7 & SAT APR 8 - Youth for Christ Benefit Auction - Lebanon Area Fairgrounds Lebanon Pa Local Aucts

SAT APR 8 Real Estate & Pers Prop at 975 Reading Rd (Rt 625) East Earl (close to Bowmanville) Walter & Lucy Good Kline, Kreider & Good Aucts

SAT, APR 8 - Glenn Mitchell, Duncannon, Pa Farm Machinery Sale Managed By King's Auctions Inc, Landisburg, PA 717-789-3883

SAT APR 8 - Special Riding Horse Sale 8 30 Tack 11 AM Horses Middleburg Livestock Auction Sales Inc Middleburg, Pa

SAT APR 8 - 8 30AM Mt Pleasant Mills, Juniata Co, PA Farm Equipment, Tractors, Lawn & Garden Tractors Elwood Flowers Owners Hoger A Lauver Auct 570-374-3793

SAT APR 8 - 8 30AM - Horse 10AM Stallion Presentation Day Mels Stables, 834 Wallace Rd New Holland PA Mel Hoover Auctioneer

SAT APR 8 - 9AM Wolgemuth Annual Spring Consignment Auction located at 2101 Valley Road, Manheim Lanc Co Pa Full line of farm equip Bob-Manager 717-665-6684

SAT APR 8 - 9AM Consignment sale Rt 25 at Gratz Fairgrounds Gratz Fire Co & Amish Schools

Lawn & garden crafts farm machinery, lumber, sheds & Horses

SAT APR 8 - 10AM Real estate on 1.3 acre lot, located 5678 Martindale Road, New Holland "Martindale" Pa Auction by Victoria S Fultz Aaron E Martin Auction Service

WED, APRIL 12 Easter Lamb & Goat Sale Belleville Livestock market, Belleville, Pa

FRI, APR 14 - 9AM Roman/Greek Easter Sale Carlisle Livestock Mkt, Inc 548

Alexander Spring Rd, Carlisle, PA

FRI, APR 14 - 9AM Tractors, Farm Eq, & Supplies To be held at A&C Dffenbach Auction Inc, 100 W Jackson St, New Holland, Lanc Co, Pa 717-355-7253

FRI APR 14 - Dairy Sale 12 Noon Middleburg Livestock Auction Sales Inc Middleburg, Pa

FRI APR 14 - 4 30PM Lawn and garden equip Ed's Repair Shop, 388 Linden Grove Rd, Ephrata, Pa 17522 354-4209 Mel

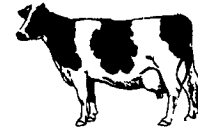
Hoover, auct
FRI APR 14 - 6 PM Feeder Sale, New Holland Sales Stables, 101 W Fulton St, New Holland, Pa

FRI APR 14 - 5 30PM & SAT APR 15 - 9 00 AM Myerstown Church of the Brethren 52nd Consignment Sale Glenn Hasinger 717-866-2925 for info

SAT APR 15 - 8 30AM Antiques, household goods, furniture Andrew Allwein, Rt 343 North of Lebanon Harry H Bachman, auct

Dairy and Livestock Sales

NEW HOLLAND SALES STABLES, INC.



New Holland, Pa.

Located 12 Miles East of Lancaster, just off Rt. 23

DAIRY SALE WEDNESDAY, FEB. 2, 2000

10:00 AM OPEN BRED HEIFERS
12:00 NOON BULLS, FRESH COWS, SPRINGERS

Weekly Consignors

• Merle Breneman • Leroy Smucker • Jim Hostetter
• Marvin Eshleman • Dale Hostetter • Daniel Z. Stoltzfus

SPRINGERS and FRESH COWS

From Local Consignors---

—also—

A Load of SPRINGERS and FRESH COWS Sell from Canada

Note To Consignors!

Please send all information along with your cattle Tues. Fresh Date, Breeding Dates, Milk Weights, TB & Blood Test charts with your trucker.

Sale Managed By

New Holland Sales Stables, Inc.

Barn 717-354-1341 Fax 355-0706 Home 717-397-5538

Norman & David Kolb, Mgrs. 61L

ALL BREED DAIRY SALE

Thursday, February 3, 2000 - 11:00 AM

Selling at Kling's Sale Barn - 15 miles North of Carlisle on Rt. 74, Landisburg, PA

150 HEAD

25 MILKING AND DRY JERSEYS - Approx 1/2 Registered, Papers Here

A-I Sired and Bred, Several Real Nice Spring Fresheners

35 AYRSHIRES - Milking & Dry, Registered Stock, No Papers, Some Show Quality Animals

25 HOLSTEINS - Milking & Dry Animals, Good Quality, Nice Udders

Approx 10 BROWN SWISS - Milking & Dry Cows, Heifers & Calves

PLUS Approx 60 HEAD OF ALL BREEDS - Heifers (Bred & Open), Plus Calves

Everything Vaccinated with 9-way and Preg Checked - Artificially Bred (No Paper Work or Dates)

Semen Tank & Semen - Misc Milker Parts

ALL CATTLE IN GOOD CONDITION, WELL CARED FOR,

MILKING GREAT, TIE STALL BROKE

Sale Managed By

KLING'S AUCTIONS, INC

PA Lic #0500

R D #1, Box 66, Landisburg, PA 17040

Offc 717-789-3883

Sale Being Held For:
FARM SERVICE AGENCY

SMUCKER DRAFT MULES

You're invited to attend a

Special Mule Sale



Saturday, February 5, 2000 - 10 AM

- 20 mule hitch prior to sale
- Expecting some 2, 3, 4 yr. old 17 hand mules from AK, AL, KY, IL, IA and TN
- 75-100 Yearling Mules and also about 10 Pair Fancy 2 year olds, also some big young jacks

You will see some of the biggest and best young mules ever at one sale in PA!

Auctioneers

Steve Petersheim AU01349-L

Paul Snyder AU-000873-L

Held at:

NEW HOLLAND SALES STABLES

New Holland, PA

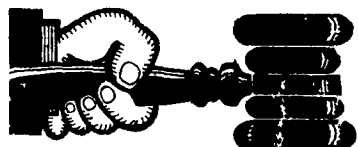
354-4341

FOR MORE INFO CONTACT PAUL SMUCKER

(717) 299-3721

NOTICE!!!

Look For Public Sales Scheduled Past Deadline On Second To Last Page Of Section A



AUCTIONEER'S DIRECTORY

Call 717-626-1164 to list your auction service.

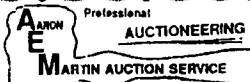
NOTICE

To assure that your Public Sale appears in the Public Sale Section we must have your advertisement by 5 P.M. Tuesday of each week's publication.



ALL POINTS AUCTION CO.

LEBANON, PA 17042
717-270-4555



410 W. Church Rd.
Ephrata, PA 17522
(717) 733-3511

Real Estate • Farm Equipment
• Antiques • Household Goods

It doesn't cost to use our Auction Service...It Pays.

CALL TODAY!!



COMPLETE PROFESSIONAL AUCTION SERVICE

REAL ESTATE - FARMS & RESIDENTIAL

PERSONAL PROPERTY - ANTIQUES -

FARM STOCK SALES - LIQUIDATIONS

RANDAL V. KLINE LLOYD H. KREIDER
AUCTIONEER-REALTOR AUCTIONEER
717-733-1006 717-786-3394

ROY E. GOOD, JR.
AUCTIONEER
(717) 445-4309

WEEKLY AUCTIONS

MONDAYS 3 PM

2152 N READING ROAD
DENVER, PA 17517

- Antiques, Estates, Household, Commercial, Real Estate
- Computerized Auction Service With On-Site Capabilities
- Buy Or Sell On Commissions
- No Buyer's Fee
- No Hidden Fees

Antiques

Sat. 10-5

Sun. 8-5

b. is@desuper.net 717-336-2861

ROBERT E. SHILLING ESTATE PUBLIC AUCTION

79 ACRE FARM

FARM EQUIPMENT - HOUSEHOLD - TOOLS - ANTIQUES

SATURDAY, APRIL 1, 2000

9:00 AM PERSONAL PROPERTY

12 P.M. REAL ESTATE

1201 PINE GROVE ROAD,

FREDERICKSBURG

BETHEL TOWNSHIP, BERKS COUNTY

REAL ESTATE: Consists of a 79 acre farm more or less. Ranch home, bank barn, equipment shed, creek and pond. Private setting.

DIRECTIONS: Go 1/2 mile East of Fredericksburg on US Rt. 22, turn left onto Legion Drive which becomes Pine Grove Road, travel 2 miles to farm on right.

CONDITIONS BY: Elvin Shilling, Executor

ATTORNEY: Charles A. Ritchie, Jr., Esquire Feather & Feather P.C.

AUCTION CONDUCTED BY:
NELSON L. EBERSOLE AUCTIONEER

LICENSE# - AU-001307-L

PHONE (717) 867-5221

FAX (717) 867-5606

30 WEST MAIN STREET

ANNVILLE, PA 17003

PUBLIC AUCTION

Valuable Chester Co. Real Estate

Restored 2 Story House And Former Church Building

Antiques, Furniture, Glassware, Old Toys, Collectibles, And Household Goods

☆ Sat. Feb. 12, 2000 ☆ 10:00 AM ☆

LOCATED AT: 2924 & 2936 Lincoln Hwy, Sadsburyville, Sadsbury Twp., Chester Co., PA. From Route 30 bypass Take Airport Road F. at Turn 1 left to Lincoln Hwy (Business Route 30) turn Right to Auction approximately 1 mile on Left in Sadsburyville Watch for signs!

☆ RESTORED DWELLING & FORMER CHURCH BUILDING ☆
Tract #1 House. (To be offered at noon) - Consists of a large 3-Bedroom, 1 1/2 Bath 2 story home on a .52 Acre Lot. The first floor contains living room, dining room, eat in kitchen laundry and powder room. The 2nd floor contains 3 Bedrooms and a full bath. There is a floored attic area. There is a daylight basement with a built in garage. Oil hot water heat. On site water and sewer.
Tract #2 House (To be offered at 1 PM) Consists of a former church building on a .15 Acre Lot. The main floor consists of a former sanctuary with cathedral ceilings. The lower level consists of a former Sunday School area. On site water and sewer.

☆ AUCTION OPEN HOUSES ☆

☆ Thursday, January 27, 4-6 PM ☆ Saturday January 29, 2-4 PM ☆

☆ FURNITURE, APPLIANCES & ANTIQUES ☆

9'5"X14' Wool Oriental Carpet By Nummani In Kashan Design (Sage And Lt. Green)

Sold Oak Queen Anne Style Dining Room Suite By Century (Like New) PA House Newport sofa and loveseat. Queen Anne Style PA House cherry coffee table and 2 end tables. 2 wing chairs by Gillian assorted chairs assorted Windsor style chairs, maple drop leaf table, six-6' book cases, four 5 bookcases, Hooker Queen Anne style Entertainment center in cherry with pocket doors and pull out swivel stand, Victorian Oak Dresser, oak dresser, serra twin bedding, Four 8' oak upholstered church pews, four 11' upholstered oak church pews, oak panel, 3-tiered server, Dutch doors Kenmore Washer and Dryer, Kenmore refer/freezer, de humidifier, picnic table and 2 benches, 2 wrought iron chaise lounges w/cushions, iron bakers rack iron table and 4 chairs, umbrella w/stand, iron sitting rockers, etc.

☆ ANTIQUES, GLASSWARE, OLD TOYS & HOUSEHOLD GOODS ☆
Carnival glass candy dishes, old Rooster cookie jar, assorted good glassware, Pfaltzgraff, ice cream dishes, Kitchenware, cast iron fry pans, Fox print, Leng-Lau bird prints, Assorted pictures, silver service, Kellogg Cornflakes doll, Religious statues, Egyptian Mummy beads, pyramid display case, old ice cream molds, copper molds, brass candle sconces, brass pieces, ten celluloid farm animals, 50 old metal farm animals, 25 farm animals with metal legs, two tootsie toy trucks, tin PA locomotive, and much more.

PAYMENT TERMS: Real Estate 10% down payment day of auction, Balance due by March 24, 2000 Buyer pays all real estate transfer taxes. Personal property, Payment in full day of auction with cash, certified check or approved PA check.

BROKER PARTICIPATION: 1% Fee available for successful registered buyer prior to February 10, 2000 Registration letter must include prospective buyer's signature. Brokers call Auctioneers for details.

AUCTIONEER'S NOTE: Very nice house with upgrades throughout Church has many uses. Clean personal property-something for everyone.

Auction conducted for: Anne L. Babin

Wentz, Weaver & Kling, Attorney

Plenty of Good Food Available.

Announcements day of auction take precedence over previous advertising.

Auction Conducted By:

Stephen J Barr

AU-002422-L

James S. Davis Jr

AU-002421-L

Gap, PA 17527

(717) 442-9221



HORNING Farm Agency, Inc.



Courteous Real Estate Services
Professional Auctioneers
State Certified Appraisers
Specializing in Farms and Land
Route 23, Morgantown, PA
(610) 286-5183