

(Continued from Page A10)

2000 Northwest Livestock Management Workshop Series, Cedarbrook Golf Course, Belle Vernon, 7 p.m.-9:30 p.m., also Feb. 9, 16, and 23.

Butler County Crops Day, East Butler Fire Hall.

Thursday, February 3
Individual Farmer Certification Training Workshop, Armonstrong Conservation District, thru Feb. 4, exam Feb. 11, 9 a.m.-noon.

Women In Ag Workshop, Penn Stater Hotel and Conference Center, State College, noon-6 p.m.

Ag Small Business Institute, Kreider Farm Restaurant, Manheim, 9 a.m.-noon, also Feb. 10, 17, and 24.

Northeast Vegetable Growers Meeting, Thompsons Dairy Bar, Clarks Summit.

Capitol Region Greenhouse Conference, Leola.

Maryland Greenhouse Growers Association Winter Confer-

ence, Brookside Gardens, Wheaton, Md.

Beef Management Program, Wesley Grange, 7 p.m., also Feb. 10 and 17.

Lancaster County Extension Annual Meeting, Farm and Home Center, 6:15 p.m.

Genex/CRI Dairy Day, Dover Fire Hall, Dover, 9:30 a.m.

Crop Master's: Farming After The Drought, Integrated Crop Production School, Holiday Inn, Bethlehem, 10 a.m.-3 p.m.

Lawrence County Crops Day, Lawrence County extension office.

Soybean School, Lebanon Valley Ag Center, Lebanon.

Friday, February 4
Pennsylvania Holstein Junior Convention, Clarion Hotel, Carlisle, thru Feb. 6.

9th Annual Farming For the Future Conference, Penn State Conference Center, State College, thru Feb. 5.

Pa. Foot Trimmers Clinic, Penn State Ag Arena, State College,

10 a.m.-3 p.m.
Farm Financial Health Checkup, Ephrata Public Library.

Saturday, February 5
Ephrata Area Young Farmers Annual Banquet, Mt. Airy Fire Hall, 7 p.m.

Pa. State Rabbit Convention, Lebanon Area Fairgrounds, thru Feb. 6.

Sunday, February 6

Monday, February 7
Annual Shade Tree Symposium, Lancaster Host Resort, Lancaster, thru Feb. 8.

New York State Vegetable Conference, Holiday Inn-Syracuse/Liverpool, thru Feb. 10.

Tuesday, February 8
Pennsylvania Corn and Soybean Conference, Penn Harris Inn, Camp Hill.

Pennsylvania Young Farmers Winter Conference, Kutztown Chapter, Kutztown School District, thru Feb. 10.

New York Vegetable Conference, Holiday Inn and Convention Center, Syracuse, N.Y., thru Feb. 10.

Southeast Regional Winter Fruit Meeting, Berks County Ag Center, 9 a.m.-3:30 p.m.

Empire State Potato Growers Inc. Annual Meeting, Holiday Inn Hotel, Liverpool, N.Y., 4:20 p.m.

Wednesday, February 9
55th Pennsylvania Landscape and Nursery Conference, Penn State Conference Center Hotel, University Park, thru Feb. 10.

Keystone Pork Expo, Lebanon Fairgrounds.

Mounting A Successful Reproduction Program, Farmers Wife Family Restaurant, Ono.

Schuylkill County Regional Fruit Meeting, Schuylkill County Ag Center, Pottsville, 9 a.m.-3:30 p.m.

29th Annual Western Pennsylvania Turf Conference and Trade Show, Pittsburgh Expo Mart Radisson Hotel, Monroeville, thru Feb. 11.

Forage Crop Production Day, Walker Grange Hall, Mexico.

Thursday, February 10
Delmarva Corn/Soybean Conference, northern location, Asbury United Methodist Church, W. Mt. Vernon St., Smyrna, Del.

Franklin-Cumberland-Adams Counties Vegetable Growers Day, Hunsdale.

Ohio Fruit and Vegetable Growers Congress, Cincinnati, Ohio, thru Feb. 12.

Dairy Records Analysis Workshop, Harrisonburg, Va., thru Feb. 11.

Mounting A Successful Reproduction Program, Kutztown

Grange Hall.
New York State Berry Growers Annual Meeting, New York State Vegetable Conference, Holiday Inn and Convention Center, Syracuse, N.Y.

Northeast Fruit Growers' Meeting, Ramada Inn, Chinchilla.

Southeast Regional Fruit Meeting, Berks County Ag Center.

Farm Family Safety Conference, Farm and Home Center, Lancaster, 9:30 a.m.-3 p.m.

Ag Issues Forum, Farm and Home Center, 7:30 a.m.

Penn Manor Ag Department Pesticide Safety Meeting, Penn Manor High School, 7 p.m.-9 p.m.

Crops Master's: Farming After The Drought, Integrated Crops Production School, Holiday Inn, Bethlehem, 10 a.m.-3 p.m.

Passing On The Farm Workshop, Morrison's Cove Memorial Park, Martinsburg, 9:30 a.m.-3:30 p.m.

Friday, February 11
Delmarva Corn/Soybean Conference, central location, Caroline County 4-H Park, Denton, Md.

Mountain A Successful Reproduction Program, Solanco Fairgrounds, Quarryville.

Franklin County Crops And Soils Meeting, Lemaster Community Center, Lemaster.

Saturday, February 12
Beginning Beekeeping Seminar, Leslie N. Firth Learning Center, Mercer, 9 a.m.-3 p.m.

PUMP YOUR MANURE OR GET OFF THE POT

Used/Rental Liquid Manure Equipment

SPREADERS

(2) 1996 Knight 8030's, (1) with Lid and 21.5x16.1 Tires; (1) w/o Lid and 22.5 Truck Tires, Both in Good Shape

(2) Houle EL84 6000 Gal. 28Lx26 Tires, Excellent cond. Without Brakes, Both in Ex. Cond.

(1) 1994 \$13,750

(1) 1997 \$14,950

1999 Houle 5,250 Gal. 28Lx26 Tires..... \$21,100

1999 Houle 4800 Gal. 28Lx26, Brakes..... CALL

Balzer 3350 Vacuum \$15,900

PUMPS

Houle 9.5' 3 Pt. Agi-Pump, Rebuilt.. \$3,350

Houle 12' Agi-Pump on 3 Pt Sliding, 1000 PTO \$6,900

(2) Houle Maxi Pumps, 28" CALL

Houle Irrigation Pumps, on trailers, hyd primers..... CALL

1999 Houle 12' Super Pump, 1,000 PTO, Twin Nozzles. \$5,900

Houle 32' and 42' Agi Pumps. \$7,500 to \$10,000

1998 Houle 8/12' Super Pump, Rental Unit..... \$6,950

MISCELLANEOUS

Ag Bagger..... CALL

Rubber Tire Scrapers, 3 pt. & Skid Steer, Also Push Blades

AgriMetal 5500, Full Hyd., Rd Bale Chopper \$12,900

(2) CADMAN 2625 Hard Hose Reels..... CALL

Ag Rain Hard Hose Reel, 2 5"x800', Slurry Turbine..... \$6,500

1993 WIC, 13 hp, Bedding Chopper. \$1,100

COMING IN

Badger BN 184 26' Lagoon Pump. \$3,000

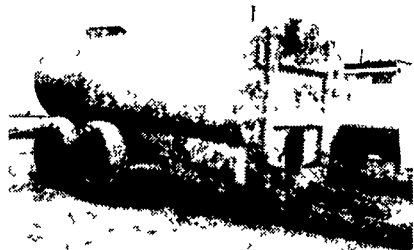
Putz 3-Pt. Agitator..... \$1,500

This Week's Special



Patz 3200 Gal. Spreader,

16.5x16.1 Tires, Tank Is Sound, Undercarriage Is good **\$1,000**



Calumet 4500 Gal. Hydraulic Drive w/Airplane Tires, Tank Is Solid..... **\$3,500**



Chromalloy "Super Tanker" 3,300 Gal. 19Lx16.1 Tires..... **\$3,000**



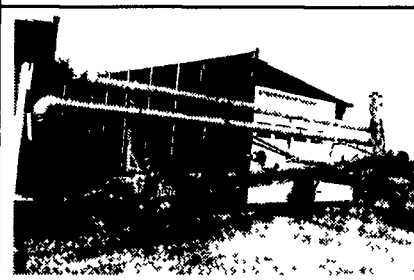
1978 Mack R-Model w/3000 Gal. Badger, Ready To Work..... **\$9,500**



Husky 40' Lagoon Pump, 540 PTO, Like New Condition, 3 Yrs. Old..... **Call**



1993 WIC 13 HP Bedding Chopper, Runs Great..... **\$1,100**



1989 Houle 32' Lagoon Pump, Just Rebuilt, Ready to Pump..... **\$4,750**

Top Volume



Dealer

4019 Ashville Rd.,
Quarryville, PA 17566

800-222-2948 • 717-529-2782

MID-ATLANTIC
agri systems



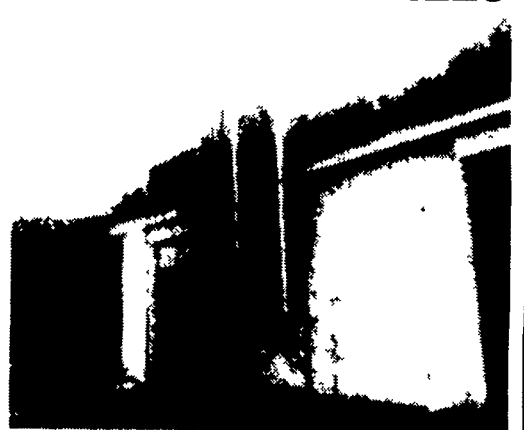
SALES:

Inc. 500 Company looking for commission driven individuals to open new accounts. Must be motivated & hard working. Bonuses, profit sharing, car allowance. Call for more details, serious inquires only

call toll free

888-893-7663

CUSTOM MADE FEED BINS FOR FARMS - FEED MILLS



- Made of 13 gauge Steel
- All welded seams
- Gravity Flow or Auger

Free Estimates

Also - Steel Roof Trusses for
Buildings - Portable Hog Buildings
- Bucket Elevators - Grain augers
Distributors - Flow Pipes &
Accessories

We Sell, Service & Install

Ph: 570-345-3724

Fax: 570-345-2294

STOLTZFUS WELDING SHOP

Owner - Samuel P. Stoltzfus

RD 3, Box 331

Pine Grove, PA 17963