

**Leesport Livestock**

Leesport, Pa.  
 January 26, 2000  
 Report Supplied By PDA  
**CATTLE** 131 [PDA] (Supply included 38 steers and heifers, 81 cows, 6 bulls and 6 feeder cattle). sl steers light supply steady, sl cows 100 to 300 higher, sl. heifers and sl. bulls steady.  
**SLAUGHTER STEERS:** few Choice 2-3 1260-1450 lbs 66.00-71.75, Select 1-3 59.75-64.00.  
**HOLSTEIN STEERS:** few High Choice and Prime 2-3 1350-1505 lbs 62.50-65.00, Choice 2-3 1375-1605 lbs 61.00-63.50, Select 1-2 57.00-60.00, Standard 1-2 51.00-54.00.  
**HEIFERS:** couple Choice 2-4 1215 & 1220 lbs 66.50 & 68.50, one Select 1-3 63.70.  
**COWS:** Breakers 75-80% lean 39.00-48.50, Boners 80-85% lean 37.75-42.50, Lean 85-90% 26.00-38.75. Shells down to 20.00.  
**BULLS:** Yield Grade 2 1050-1540 lbs 42.00-50.00.  
**CALVES** 77...VEALERS one Good 145 lbs 45.00, Standard and Good 70-100 lbs 37.50-55.00, Utility 65-105 lbs 10.00-30.00.  
**FARM CALVES:** Holstein bulls mostly steady, Holstein heifers steady...No 1 Holstein bulls 90-120 lbs 140.00-165.00, No 2 85-120 lbs 50.00-125.00, few to 140.00; No 1 Holstein heifers 95-105 lbs 250.00-265.00, one No 2 110 lbs 150.00.  
 Beef type bulls and heifers 85-195 lbs 52.50-75.00.  
**HOGS** 8...Barrows and gilts steady to 1.00 higher.  
**BARROWS AND GILTS:** one lot 45-50% lean 264 lbs 38.00, one 40-45% lean 326 lbs 30.50.  
**FEEDER PIGS** 16...(SLAUGHTER)

119-126 lbs 42.00-43.00 --- per cwt  
**SHEEP** 4. Slaughter lambs steady  
**SLAUGHTER LAMBS:** Choice 85-150 lbs 78.00-90.00  
**GOATS** 6 Large Nannies 47.00-62.00, one Large Kid 30.00, one Small 22.00 --- per head

**Morrison's Cove Livestock**

Martinsburg, Pa.  
 Report Supplied by Auction  
 Monday, January 24, 2000

**CATTLE: 126 HEAD.**  
**STEERS: CHOICE 68.00-73.00, GOOD 64.00-67.00.**  
**HEIFERS: CHOICE 67.50-72.50, GOOD 60.00-66.00, UTILITY AND COMMERCIAL 37.00-44.00, CANNER AND LOW CUTTER 22.00-36.00.**  
**BULLOCKS: NO MARKET TEST.**  
**BULLS: YG# 38.00-43.00.**  
**FEEDER CATTLE: STEERS 60.00-72.00, BULLS 55.00-68.00, HEIFERS 50.00-63.00.**  
**CALVES: 104. PRIME, NO MKT. TEST, CHOICE 76.00-84.00, GOOD 68.00-77.00, STANDARD 20.00-42.00. HOLSTEIN BULLS 90-130 LBS. 60.00-152.00. HOLSTEIN HEIFERS 90-130 LBS. 160.00-235.00.**  
**HOGS: 187 HEAD. US#1-2 38.50-40.00, US#1-3 35.50-37.00.**  
**SOWS: US#1-3 24.00-41.00.**  
**BOARS: 8.00-24.00.**  
**FEEDER PIGS: 11 HEAD. US#1-3 20-50 LBS. 10.00-23.00.**  
**SHEEP: 29 HEAD. CHOICE AND GOOD LAMBS, NO MARKET TEST; SLAUGHTER EWES 35.00-45.00.**  
**GOATS: 40.00-60.00.**

**New Holland Sheep and Goats**

January 24, 2000  
 Report Supplied By USDA  
**CALVES SHEEP GOATS**  
**MONDAY**  
 192 400 700  
**LAST WEEK**  
 173 858 1381  
**LAST YEAR**  
 210 545 694

**CALVES:** Compared to Thursday's auction, a very light test of vealers sold 2.00-4.00 lower. Lightweight slaughter calves sold firm to 10.00 higher, but over 350 lbs were not well tested. Holstein bulls returning to feed sold fully steady and Holstein heifers traded 20.00-35.00 lower.

**VEALERS.** Few Good and Choice 70-110 lbs 24.00-32.00. Few Standard and low Good 60-90 lbs 11.00-25.00.

**SLAUGHTER CALVES:** Few Good and Choice 250-350 lbs 85.00-105.00.

**RETURNED TO FARM:** Holstein bulls 90-125 lbs 137.00-170.00. Plain-type bulls 80-115 lbs 95.00-145.00, few weaker calves down to 50.00. Holstein heifers 80-120 lbs 270.00-315.00. Plain heifers 75-100 lbs 170.00-230.00, few 70-75 lbs 110.00-140.00.

**SHEEP:** Last Thursday's light offering was not enough for a comparison, but Monday's market had a higher undertone. The goat market was also strong.

**SLAUGHTER LAMBS:** New Crop Choice and Prime 2-3 50-80 lbs 110.00-150.00. Woolled: Choice and Prime 2-3 65-90 lbs 100.00-120.00; 90-110 lbs 85.00-100.00, 110-150 lbs 60.00-85.00

**SLAUGHTER EWES:** Good and Choice Yearlings and 2 year olds not well

tested Utility and Good 1-3 30.00-55.00  
**GOATS** (All sold by the head) Billies Large 100.00-140.00, few up to 165.00 Medium 75.00-100.00. Mutton Choice and Prime 80.00-120.00 Nannies Large 70.00-100.00, few up to 120.00 Medium 40.00-70.00 Yearlings Choice and Prime 60.00-90.00 Kids Choice and Prime 45.00-75.00 Good 25.00-45.00

**Valley Livestock**

Athens, Pa.  
 Report Supplied by Auction  
 Monday, January 24, 2000  
**HOLSTEIN HFR. CALVES** 65.00-305.00.  
**BACK TO FARM CALVES** 95-120 LBS. 70.00-187.50, 70-95 LBS. 35.00-155.00.  
**SLAUGHTER CALVES** 11.00-30.00.  
**GRASSERS & STR. CFS.** 40.50-57.50.  
**FEEDERS** 65.00-79.00.  
**LAMBS** 100.00-117.50.  
**SHEEP** 20.00-35.00.  
**HOGS** 200-250 LBS. 36.00-40.00.  
**SOWS** 21.00-33.50.  
**BOARS, NONE.**  
**PIGS EACH** 5.00-23.00.  
**HEIFERS** 36.00-47.00.  
**STEERS** 44.00-48.50.  
**BULLS** 42.00-46.75.  
**GOOD COWS** 36.00-42.50.  
**MEDIUMS COWS** 30.00-36.25.  
**THIN COWS** 19.00-32.25.  
**CATTLE MARKET STRONGER.**  
**CALF MARKET HIGHER.**  
**HORSES AND PONIES, NONE.**  
**GOATS, NONE.**  
**BACK TO FARM CALVES MUCH**

HIGHER.  
**FEEDER SALE 1ST MON. EA. MONTH. DAIRY SALE 3RD THUR. EA. MONTH.**

**Lebanon Valley Livestock**

Fredericksburg, Pa.  
 Report Supplied by Auction  
 Tuesday, January 25, 2000  
**COWS: BREAKERS** 75-80% LEAN 42.25-46.00, **BONERS** 80-85% LEAN 36.75-42.00, **LEAN** 85-90% LEAN 27.00-36.50, **SHELLS DOWN TO** 25.75.  
**BULLS: YG#1** 1945-2480 LBS. 49.00-51.00.  
**FEEDER CATTLE: STEERS** HOL. 145-385 LBS. 53.00.  
**CALVES: UTILITY** 75-85 LBS. 15.00-30.00.  
**FARM CALVES: HOLSTEIN BULLS** #1 90-115 LBS. 114.00-150.00; #2 85-115 LBS. 80.00-112.00.  
**HOLSTEIN HEIFERS: #1** 75-85 LBS. 76.00-120.00.  
**SOWS: US#1-3** 500-600 LBS. 30.00-41.00.

*Because of recent inclement weather, several markets indicated reduced sales and several were unavailable.*

**Planning to expand or update?**

Check with Agri-Inc. where quality is our standard.



**OPEN-SIDED CALF FACILITY**

**OPEN-SIDED HEIFER FACILITY**



**Site layout, building design & construction.**

- Dairy complexes and replacement stock facilities
- Horse stall barns and riding arenas
- Workshop and machinery storage buildings
- Timber column buildings for light commercial



**AGRI-INC.**

The Construction Professionals



Serving The Agriculture Industry For Over 30 Years  
 10 Parkview Heights Rd., Ephrata, PA 17522 • (717) 721-3535  
 WWW.AGRIINC.COM e-mail: buildings@agriinc.com

**FREE COMMODITY MARKET NEWSLETTER**

Whether your trade interests are grains or gold, Lehigh Valley Futures, Inc. has the knowledge and expertise to assist you in these markets. For a copy of our newsletter and/or a free trading kit, please contact:

**Lehigh Valley Futures, Inc.**

5000 Tilghman Street Suite 249  
 Allentown, PA 18104  
 1-800-543-8939 or 1-610-366-7979 Fax 1-610-366-9842  
 lvfuture@microserve.net

The risk of loss in trading futures and options on futures can be substantial. Futures and options trading may not be suitable for everyone. You should carefully consider the risks in light of your financial condition in deciding whether to trade.

**GOLDEN LEAF TOBACCO**

★ Golden Leaf Tobacco Co. is currently buying 609 tobacco at our Leola receiving station. Call for receiving days and prices 656-3076 office.

★ Golden Leaf Tobacco Co. is offering the processing of your 609 tobacco.

★ We are also currently buying 1998 Crop 41 PA Tobacco.

Call for details.

**Eugene Martin**

Mobile 371-6979 Home 354-8263

**MARTIN'S TIRE & ALIGNMENT**

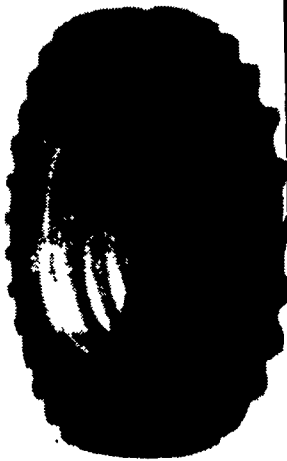
**We're Your Firestone Farm Tire Dealer!**

**Count on us year-round for:**

- A complete line of Firestone farm tires
  - In the field emergency repair service
  - Implement and light truck tires in stock too!
- Many Other Tires In Stock - Call For Prices

**FARM TIRES**

Traction Field & Road		Firestone All Traction 23°	
13.6 x 28	6 ply \$190.00	18.4R34	1 ★ \$540.00
18.4 x 30	6 ply \$360.00	20.8R38	1 ★ \$725.00
18.4 x 38	6 ply \$365.00	20.8R38	2 ★ \$875.00
20.8 x 38	8 ply \$540.00	20.8R42	2 ★ \$880.00



Visit or call us today!

**MARTIN'S TIRE & ALIGNMENT**

Located in Churchtown  
 119 Water St., Narvon, PA 17555  
**717-445-4993**



F A R M T I R E S

THE LEADER IN THE FIELD

**KEYS' TRUCKLOAD SALE**

Trade-In • Trade Up To A NEW

**SUZUKI. 500 4x4**

JUST PURCHASED...

A Truckload of 1999 500 4x4's

Buy 1 now and we'll deliver it FREE!

- 500 cc liquid cooled
- low & high range
- shaft drive
- bright red

SAVE \$1000

Now Just.. \$5299<sup>99</sup>



We Need Your Trade!

All Other Suzuki's On Sale. You Won't Beat Our Trade In Details!

Suzuki QuadRunner ATVs may be used only by those aged 16 and older. Suzuki highly recommends that all ATV riders take a training course. We'll even pay for it! For safety and training course information see your dealer or call the SVIA at 1 800 852 5344. ATVs can be hazardous to operate. For your safety always wear a helmet eye protector and protective clothing. Always avoid paved surfaces. Never ride on public roads. Never carry passengers or engage in stunt riding. Riding and alcohol or other drugs don't mix. Avoid excessive speeds. Be extra careful on difficult terrain. Along with concerned conservationists everywhere Suzuki urges you to "TREAD LIGHTLY" on public and private land. Preserve your future riding opportunities by showing respect for the environment local laws and the rights of others when you ride.

Financing Available We Deliver Anywhere We Take Trade-Ins We Rent ATV's

**KEYS'**

Hazen, PA, Rt. 28 • 814-328-2222 • 814-328-2904  
 Clarion, PA, Rt 322 • 814-226-4444

Clarion Store Closed Sundays  
 Hours. Mon -Thurs 8-7, Fri 8-8, Sat 8-5, Sun 12-4  
 \*To qualified buyers. Not responsible for typographical errors

Don't have time to visit our store? Call Damien at our Hazen Location. A traveling salesman, he'll come to your door with a unit to test drive and also estimate your trade.