

'96 Chevy Silverado 2500 extended cab, 2WD, 350 Vortec, auto, PS, PB, PW, PDL, cruise, tilt, air, AM-FM cassette, 373 ratio, 8,600 GVW, 54,000 miles, new radials, excellent condition, \$15,900. 717-733-2873

1987 Volvo White tractor, single axle or with tag axle, conventional, 320 Detroit, good cond. \$4800. 717-776-7725

1997 Chevy Dualie, White, Dsl, 18K Mi. \$27,000. Fully Loaded + Extras! 6-Wheel Drive, Auto, 610-269-7900.

MACK PARTS FOR SALE: Engines, blocks, heads & cranks, cabs, hoods & doors, trans, rears. **ALL MACK PARTS. REASONABLE PRICES. MACK TRUCKS BOUGHT** (complete or parts). 1-888-625-6485

TRUCKS FOR SALE

- 1998 Chevy K2500 4x4 Ext. Cab Pickup, Fully Loaded w/Cap.....\$24,000
- 1993 International 9670, Series 60, 10 spd.....\$12,000
- 1993 International 9700, N-14, 10 Spd.....\$10,000

Call **WATTS TRUCKING** at 800/258-6995

ATTN SHED HAULERS!!



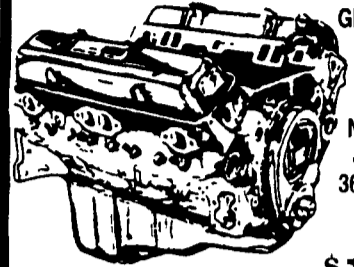
Rollback - 1988 Ford Super Duty
460 gas engine and 5 speed trans., 17 foot Industrial Bed, 6 inch on center crossmember spacing, wood deck, Great Shape - bed alone cost over \$14,000.
Buy Today for \$10,500.

215-997-9043

JONES



We want your business.



GM GOODWRENCH
350 V8 1973-85
Part Number 10067353
New Engine - Not Rebuilt
36 Month or 50,000 Mile Warranty

New Engine - No Core Fee **\$1,295⁰⁰**

WE'LL MATCH ANY COMPETITOR'S PRICE!

Goodwrench Transmissions Now In Stock! Call For Great Prices

Call 394-0711 for prices on other New or Remanufactured Goodwrench Engines. 2.5 Liter thru 454 cid. Gas and Diesel

Chevrolet - Pontiac - Olds - Buick - Cadillac - GMC

JONES GM PARTS CENTER

1335 Manheim Pike, Lancaster, PA 17604
Easily Located on Rt. 72 Just off of Rts. 283 & 30
Hours: Mon-Fri 7:30 a.m. - 8 p.m. Sat 7:30-3
(717) 394-0711



KEIM
YOUR CHEVY GEO FAMILY

(717) 768-8225
(800) 223-KEIM

RT. 30 Lincoln Highway East
Paradise, PA 17562

YOUR TRUCK, VAN & 4x4 HEADQUARTERS
1-800-223-KEIM



99 CHEVY 1 TON REG. CAB
2WD, Stake Body, 350 V8, AT, A/C



93 CHEVROLET K1500 SILVERADO SHORTBED
V8, AT, A/C, Teal/Silver



97 CHEVROLET C2500 CHEYENNE LONGBED
350 V8, AT, A/C, Forest Green



98 CHEVY SILVERADO
1 Ton Extend Cab Dually 4x4, Blue/Gold, 350 V8, AT, Only 6,000 Mi.
Was \$27,900 Now \$25,777



99 CHEVROLET K3500
Crew Cab Single Rear Wheel 454 V8 AT, A/C, Only 13,000 Mi., Dark. Blue



(2) 2000 CHEVY G30 CUT AWAY HIGH CUBE VANS
12' & 14' Bodies, 350, AT, A/C, Both White

2 New Plows
7 1/2' & 8' Unimounts
As Low As **\$2,695**

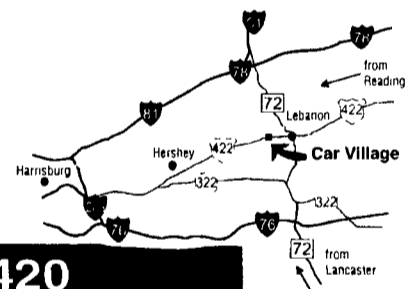


2000 CHEVY C30 CHASSIS CAB,
454 V8 AT, A/C, You pick the body

Business Hours:
Mon.-Fri. 9 to 9;
Sat. 9-4

2300 W. CUMBERLAND ST. (Rt. 422)
LEBANON, PA 17042
(Across From Lebanon Valley Mall)

CAR VILLAGE
HEAVY DUTY TRUCKS



PHONE 717-274-2000 Toll Free 1-800-650-1420

WORK TRUCK
95 DODGE 2500 4X4
Heavy 3/4 Ton, Cummins Turbo Diesel, 5 Sp., A/C, Cloth Seat, Vinyl Floor, Tow Pkg.
\$17,900



QUAD CAB, 99 DODGE 2500 4X4 ST
Only 7000 Miles, 24 Valve Cummins, Turbo Diesel, AT, A/C, Cloth Seat, Vinyl Floor, All Doors Open, Tow Pkg, Remaining New Tk Warranty, Powerstroke Diesel, AT, A/C, 40/20/40 Seat Aluminum Wheels, Tow Pkg \$29,900



DIESEL SUPER CAB 4 WHEEL DRIVE
97 FORD F250 XLT, Super Sharp, Only 30,000 Miles Remaining New Tk Warranty, Powerstroke Diesel, AT, A/C, 40/20/40 Seat Aluminum Wheels, Tow Pkg



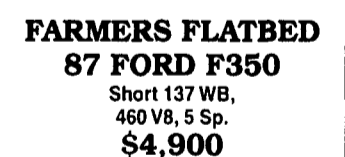
98 DODGE 2500 QUAD CAB 4x4
Work Style Truck, Nothing Fancy, Just Clean Cummins Turbo Diesel, AT, A/C, Vinyl Floor Mat, Tow Pkg, New Insp & 4 Brand New Tires



4x4 CLUB CAB DUALLY, 95 DODGE 3500
Strong Cummins Turbo Diesel, AT, A/C, Loaded Laramie SLT, Tow Pkg, Very Strong, Great Tow Machine



DYNAMIC DUO We Got 2 98 DODGE 2500 4x4 1 Loaded SLT, 1 Work Style ST, 24 Valve Cummins Turbo Diesel, Auto, A/C, Remaining New Tk Warranty, Tow Pkg., Good Looking Trucks



FARMERS FLATBED
87 FORD F350
Short 137 WB, 460 V8, 5 Sp., **\$4,900**



SHORT BED QUAD CAB - 98 DODGE 2500 4X4
Super Nice, 22,000 Miles, 24 Valve Cummins, Auto, A/C, Loaded Laramie SLT Tow Pkg, Real Nice To Drive



FORD CHASSIS CAB - READY TO WORK
2 AVAILABLE
95 F350 & 94 F-Super Duty Diesel Power, 5 Spd Trans., Long 161 WB, 84" C A Call For Details



5 SP GMC 98 GMC K2500 SIERRA
Heavy Duty 3/4 Ton, High Output 6.5 Turbo Diesel 5 Spd, A/C, 22,000 Miles, Nice Clean Tk., Ready For You



5 SP, DUALLY 4X4, 97 DODGE 3500 CLUB CAB
Real Strong Tow Machine, Only 42,000 Miles, Cummins Turbo Diesel, 5 Sp, A/C, Vinyl Seat & Floor



TOW MACHINE 96 DODGE 3500 CLUB CAB
DUALLY 4 Wheel Drive, This One Will Pull The Big Load, Cummins Turbo Diesel, AT, A/C, All Power Equipment, Heavy Duty Dana Frt & Rear Axles, Tow Pkg.



4 DOOR CREW CAB
99 FORD F350 XLT LARIAT 4x4
Gorgeous Truck, only 19,000 miles Powerstroke Turbo Diesel, 6 spd, Power driver seat, Leather seats, off road pkg, aluminum wheels, CD player, overhead console, A/C, Power everything, Remaining new TK warranty \$33,900



THE NICEST 4 DOOR 4X4 CREW CABS
ARE HERE 97 FORD F350
3 Available Powerstroke Turbo Diesel, AT Loaded XLT's, Call For Details



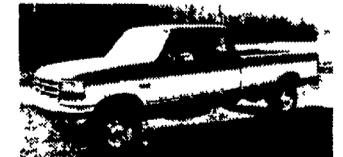
480 4 DOOR 96 FORD F250 XLT
4 Wheel Drive, Perfect, Only 11,000 Miles, 460 V8, Auto A/C, Loaded XLT, Aluminum Wheels, Factory Tow Pkg., A Must See



NOT FANCY JUST TRUCK 97 FORD F250 4x4
SUPER CAB XL Package, Cloth Seat, Vinyl Floor, Powerstroke Turbo Diesel, AT, Limited Slip, 4 10 Gear, Awesome Work Tk \$22,900



4 DOOR CREW CAB 4X4, 97 FORD F250
A Must See, Good Lookin, Powerstroke Turbo Diesel, AT, A/C, Loaded, XLT, Tow Pkg Aluminum Wheels, Local 1 Owner Trade



4 WHEEL DRIVE, 96 FORD F250 SUPER CAB
Great Price on a Nice Truck, Powerstroke Turbo Diesel, AT, A/C, Loaded, XLT, Aluminum Wheels, Limited Slip Gear, \$23,900



4x4 CHASSIS, 98 CHEVY K3500
4x4 Short Wheelbase Great Gooseneck Hauler, 12,000 GVW, High Output 6.5 Turbo Diesel, 5 Sp, A/C 4 10 Gear



4x4 HEAVY DUTY 97 FORD F250 4X4
Heavy 8600 GVW Powerstroke Turbo Diesel, AT A/C Tow Pkg, Loaded XLT, Only 42,000 Miles, Remaining New Tk Warranty



LOOKIE HERE 99 FORD 450 CHASSIS CAB
4 Wheel Drive, Heavy 15,000 GVW, Powerstroke Turbo Diesel 6 Sp Trans Short 141 WB 60" C A Runs Strong & Ready To Work



2 WHEEL DRIVE 93 DODGE CLUB CAB
Heavy Duty 3/4 Ton Cummins Turbo Diesel, AT, A/C, Capt Chairs Fold Down Gooseneck, Ball & Frame Mount Class 3 Hitch



RACK BODY DUMP
VERY NICE 89 FORD F350
Only 48,000 Clean Miles, 351 V8, AT, 12 Ft. Body Big Swing Out Mirrors



GAS QUAD CAB 98 DODGE 2500 4X4
360 Magnum V8 AT, A/C Tilt Cruise Power Everything, Aluminum Wheels Tow Pkg Back Doors Open A Pleasure To Drive