

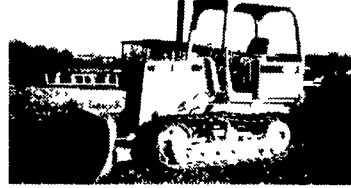
1A CONSTRUCTION EQUIPMENT



JCB 215S Backhoe 4x4, Ext Hoe, 4-Wheel Steer Call



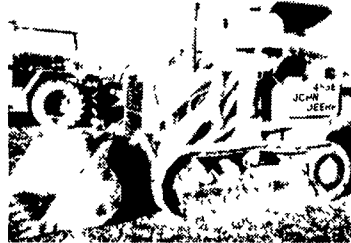
Rex 3-45 Compactor, Sheep Foot, w/Blade, Good Condition Call



JD 450G Dozer, 6-Way Blade \$26,000



Gehl DynaLift D4P60 Telescopic Boom Forklift 4x4, 6,000 Lb Cap, 34' Reach, Frame Tilt, 4-Wheel Steer, Good Condition \$18,500



JD 455E Crawler Loader, Good U/C, Tight Machine \$19,000



94 JD 650G Dozer, Good U/C \$44,000

- JD 755 Crawler Loader, Cab, UC Excellent \$18,000
- Case 680L 4x4, Ext Hoe, Cab Coming In
- JD 755B Crawler Loader, EROPS Call
- JD 450C Crawler Loader, Good UC \$14,000
- Case 1840 Skid Loader, Exc Cond \$9,800
- JD 675B Skid Loader \$8,900
- NH L555 Deluxe \$7,800
- JD 410 Backhoe, OROPS, Standard Hoe, Needs Some Work \$7,500
- 93 Ford 555D, ROPS, Low Hours \$20,000
- Marklift 30' Man Lift, 4x4, Good Cond \$9,800

Weaver's Equipment Sales
RD#1, Box 418, Milton, Pa. 17847
Phone: 570-523-9598

- Sullair 1050 CFM Compressor V6, Detroit Diesel, 2 to Choose From \$3,500/each
- Hyd. Plate Compactor to Fit Backhoe, NEW \$2,500
- Miscellaneous Thumbs & Buckets
- Ripper For 943 60 KW 3 Phase Generator, Gas Powered \$1,900
- Concrete Crusher For 50,000 Lb. Excavator
- Electric Pallet Jacks & Chargers

- Coming In:**
- JD 644B, 1980 Model Call
 - NH LX665 Skid Steer, Cab & Heater, 1500 Hrs \$12,500
 - 93 Case 1845C, 3000 Hrs., Grapple Bucket, Rough \$7,900



Cat 955L, 74 Model, New Chains \$23,500 or Rent



Cat 966C, Good Rubber, New Paint \$28,000



91 JD 644E, Bucket & Forks w/Grapple 3rd Valve, 60% Rubber \$58,000



JCB 214, CAB, 4X4, Standard, 93 Model, New Tires \$23,500



95 & 96 Volvo 120C, New Rubber, Quick Coupler, 4 3 Yd Bucket, 2 To Choose From \$65,000, \$69,000



JD 544A, Rubber Tire Loader \$11,900

Rentals Available Day, Week or Month

**Financing and Lease Purchase Available
No Sunday Calls**

**Jay Weaver, LLC
Reinholds, PA
717/336-7375**

STONEY CREEK

CONTRACTOR SERVICES

EQUIPMENT RENTALS

Rent For Less!

Crawler Dozers • Crawler Loaders
Backhoes • Ram Hammers • Excavators
Vibratory Compactors • Telescope Forklifts

Passenger Van Rentals

415 Park Road (610) 944-5332
FLEETWOOD, PA 19522 FAX (610) 944-6673

1997 FORD BACKHOE

575E Extend Hoe 4WD

Less Than 200 Hours

Reduced to

\$46,000



JCB 1400 Wheel Loader Backhoe 4x4 - \$16,500

Heavy Equipment Loader Parts, Inc.
10070 Allentown Blvd., Grantville, PA 17028
(717) 469-0039 (800) 446-0505



**Cat 941/951 CRL Loader
2 to Choose from starting at
\$16,000. Sale Or Rent**

Heavy Equipment Loader Parts, Inc.
10070 Allentown Blvd., Grantville, PA 17028
(717) 469-0039 (800) 446-0505

USED & NEW PARTS PRICED RIGHT

DISMANTLING

- | | | |
|------------|-------------|---------------|
| Cat | IHC | Galion |
| Case | Michigan | Wabco |
| John Deere | Hough | Dynahoe |
| Trojan | Terex | Koehring |
| Drott | Hein Werner | AC/Fiat Allis |
| | & Others | |

Dismantling Over 650 Machines For Parts

NATIONWIDE PARTS LOCATING SERVICE

In addition to our own large inventory, we have two computerized parts locator services, nationwide & Canada, ready to serve you. In less than a minute, over 600 used & new parts & equipment suppliers will receive your parts request. Parts are located easily & at substantial savings. Try Our Services.

Save \$\$\$ Parts Shipped Anywhere Direct To You.

All Parts Guaranteed

"We Return All Phone Calls"

BALANDA EQUIPMENT, INC.

P.O. Box 407 • Route 29 • Palm, PA 18070

Phone: (215) 679-3900 • Fax: (215) 679-8727

TOLL FREE: 1-800-322-8030



**Caterpillar 955L CRL Loader
Big BTM V. Good Condition
\$25,000**

Heavy Equipment Loader Parts, Inc.

10070 Allentown Blvd., Grantville, PA 17028

(717) 469-0039 (800) 446-0505

JERRE MARTIN REPAIR

391 N. Farmersville Rd., Ephrata, PA 17522

(Just minutes off RT 222)

(717) 859-3283



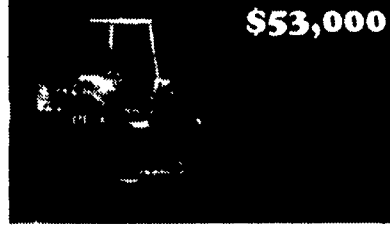
Kobelco SK027, Rubber Track



(4) Case 1840's, 45C's, 35B's

**All
Machines
Listed
For Sale
Are Also
For Rent**

**Financing
Available**



86 Cat 963, New U/C



96 JD 455G, 4 in 1, Series 4, 1,400 Hrs.

**Road Service Available Now
Custom Repairs On All Makes Construction Equipment**

WE ARE BUYERS FOR LATE MODEL CONSTRUCTION EQUIPMENT NEEDING REPAIRS

- | | | | |
|---|----------|--|----------|
| Cat 916 wheel loader..... | \$28,000 | '87 JD 555B crawler loader, 4N1 bucket, good cond..... | \$22,000 |
| Cat 416 4x4 extend-a-hoe, EROPS..... | \$19,500 | (2) JD 644 B excellent..... | \$24,000 |
| '95 Cat 939 crawler loader, good cond..... | \$48,000 | JD 644C wheel loader, good cond..... | \$33,000 |
| Cat 953 crawler loader, new paint | | Choice of 2 JD 644E wheel loaders, good cond. ea | \$50,000 |
| 50% U/C cab, OROPS..... | \$43,000 | JD 744E excellent, like new rock tires..... | \$72,000 |
| Cat 951C crawler loader, new pins & bushings..... | \$16,500 | '83 JD 750 dozer, straight w/tilt..... | \$22,000 |
| Cat 955K crawler loader, excellent..... | \$16,000 | '96 JD 8875 skid loader w/cab & heater..... | \$16,500 |
| '81 Cat 963 crawler loader, EROPS, good cond..... | \$33,000 | Mark Lift 80' man lift w/Deutz diesel..... | \$20,000 |
| JD 555 crawler loader..... | \$15,000 | '85 Ford 2110 4x4, 3 pt. PTO, 1350 Hrs..... | \$12,000 |
| 1996 JD 555G crawler loader w/4N1 bucket..... | \$48,000 | Ford 655A 4x4 EROPS..... | \$17,500 |
| '91 JD 410D 4x4, EROPS, standard hoe..... | \$29,500 | Dresser 530 wheel loader, good cond..... | \$21,000 |
| JD 450C crawler loader..... | \$14,000 | '78 Komatsu D31S crawler loader..... | \$13,000 |
| '83 JD 555A crawler loader, good cond..... | \$17,000 | | |