

Speakers at the recent International Silo Association 88th Annual Meeting in Madison, Wis. From left, Bob Francis, national sales manager for Sollenberger Silos Corp.; Adam Shaffer, employee at Dovan Farms; Jason VanGilder, family member of Dovan Farms; and Drew Freeman, president of the International Silo Association.

## Meeting Showcases One Of Country's Largest Silos

MADISON, Wis. — Silo builders, farmers, extension personnel, and media were on hand to hear the answer to a question recently: why build one of the nation's biggest silos?

At the 88th meeting of the International Silo Association in Madison, Wis., Jason VanGilder, Dovan Farms, Berlin, Pa., explained about the large silo at Dovan Farms.

The new poured concrete silo, measuring 30 feet in diameter and 132 feet tall, has a capacity of 3,000 tons or more of corn silage. Constructed in 1998, the silo is equipped with an elevated floor so the feed truck can drive through and be quickly loaded.

Dovan Farms is able to load more than a ton per minute with no one needed to pack the silage. Farm personnel can typically

unload a ton a minute.

The VanGilders are able to save thousands of dollars in labor and machinery costs each year with the new system. With increased feed quality and less than five percent loss, the tower silo could be an ideal system for the farms' expanding herd. Another silo, perhaps taller, is being planned for future expansion.

The large silo costs more than any horizontal system. But they will be able to pay the difference in three years and enjoy convenience, improved feed quality, and savings.

After visiting Dovan's open house last winter, farmers from Virginia asked Sollenberger Silos Corp. to construct a similar silo for their operation. The farmers have plans for another large silo in the future.

## Monsanto Reduces Risk For Growers

ST. LOUIS, MO. — More than 32,000 Midwestern growers who faced unexpected weed flushes or crop loss or had to replant due to severe weather in 1999 found that Monsanto's innovative Roundup Technology Value Package™ (TVP) Rewards Program reduced their financial risk.

Growers who make qualifying purchases of Roundup Ready® soybeans or corn, YieldGard® insect-protected corn or YieldGard and Roundup Ready corn stacked genetics and use Roundup brand herbicide on their technology acres, are eligible to participate in the TVP, which is a risk sharing program for growers who use Monsanto technology. The TVP refunds the technology costs of Roundup Ready and YieldGard products if the crop is destroyed and can not be replanted. If there is time to replant, the company waives the technology costs/seed premium if the field is replanted with the same Monsanto technology.

To be eligible for TVP, labeled Roundup brands, FieldMaster or

new Ready Master ATZ must be used for burndown and/or in-crop applications with any Monsanto technology crop.

"This was a tough year for Midwestern farmers, with too much rain in some areas and too little in other areas," said Bart Baudler, Monsanto marketing manager for the North Central region. "Growers who were enrolled in the TVP could take some comfort in knowing that their investment in biotechnology products was not lost due to unexpected weather conditions.

"Growers receive tremendous benefits when they buy Roundup brand herbicides along with Roundup Ready and YieldGard seed technology," said Baudler. "But, if weather destroys the crop, growers don't get to realize these benefits. That's why we refund the premium that qualifying growers paid for the technology."

The 2000 TVP offers growers a refund of \$6.50 per bag for Roundup Ready soybeans, \$18 per bag for Roundup Ready corn, \$24 per bag for YieldGard corn,

## Southeast Ohio Farmer Wins Vermeer's 100,000th Baler

PELLA, Iowa — Roy Van Meter, a longtime native of Racine, Ohio, (located in the Hill Country of southeast Ohio), is the lucky winner of a brand new Vermeer baler following a recent sweepstakes drawing at Vermeer.

The grand prize was given away by the Pella, Iowa hay equipment manufacturer to commemorate Vermeer's 50th year in business and to mark production of its 100,000th baler.

Van Meter, a local Polled Hereford purebred producer, decided to enter the contest late last winter after having read a farm magazine article about how Gary Vermeer had invented the Big Round Baler back in 1971. Within the article were instructions on how to write for the entry form from Vermeer. He wrote in, and the rest was history.

"I got this call in late April from Mark Core (marketing director at Vermeer), telling me



Roy Van Meter was the lucky winner of a brand new baler from Vermeer following a recent contest.

that I had won the Vermeer Baler, and when you get a call like that, of course, you have a tendency not to believe what you just heard, said Van Meter.

"So, I called him back three days later, just to confirm it. I asked Mark, 'if that baler that I won was for real?' And, without even skipping a beat, he says to me 'what baler?' Then he started laughing and told me, 'sure enough, it was true.' What a great way to start the new hay season," he said.

Meter, with his wife Bonnie, farm the same land he was born on 58 years ago. The retired Ohio Department of Transportation employee also has three grown children not involved in the operation.

Van Meter's winning entry form was picked by Gary Vermeer, the person who invented the big round baler back in 1971 after he was visiting with a neighbor/friend who decided to get out of the cow-calf because of the hassles of putting up hay. The winning entry was one of approximately 40,000 sweepstake entries submitted by individuals who either wrote in, signed up at various farm shows, or visited Vermeer hay specialist distributorships throughout the U.S. during the seven-month-long contest.

Kim Jividen-Deckard of Jividen's Farm Equipment (A Vermeer ag retail distributor in Gallipolis, Ohio, approximately 35 miles from the winner) delivered the baler on June 11.

## System Still Copycat-Resistant

BIGLERSVILLE, (Adams Co.) — More than two decades after its introduction, the GVM HydraSpray has shown itself to be proven against all imitators. Many other manufacturers have tried to copy the system but no one has succeeded.

A versatile pickup-mounted sprayer, the GVM HydraSpray 550-G comes fully incorporated into 2000 Ford F-550 Super Duty 4x4 pickup, powered by a no-nonsense, power-stroke 235-HP Turbo diesel engine, which comes standard with a 6 speed manual transmission or an optional 4 speed automatic transmission.

This unit features dual fuel tanks, air-conditioning, AM/FM stereo, and a Seatco Drivers Seat, and comes equipped with a heavy-duty front end at 6,000 pound with 7,000 pounds springs, and a rear axle at 13,500 pounds with 14,500

pounds rear springs. Front and back differentials feature 4.88 gearing.

The spray unit comes with a 550-gallon stainless steel tank and 35-gallon side-mount rinse tank with flush tube for easy cleanup. A 2 inch by 1 1/2 inch Hypro pump system with stain-

less manifold and valves and 2 inch stainless T-strainer is also included. The Raven 440 controller comes standard on this unit along with a 33-gallon Simpson Foam Maker, a 100-gallon flow meter, and 2 inch stainless control valve, as well as a Speedo sensor.

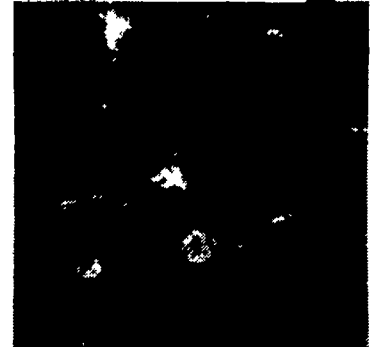
## Deere Rotary Cutters Increase Productivity, Safety

MOLINE, Ill. — John Deere has introduced the MX and HX Rotary Cutters, six new models that combine features from previous models with new technology for increased productivity and safety. The cutters are compatible with the 4000 and the 5000 Series John Deere tractors. The six new cutter models share several key features.

The cutters are built with exclusive "Double Decker" design. Two welded decks, each up to 3.5 mm (0.138-inch) thick, form the upper and lower surface of the rotary cutter frame. This design, along with internal stiffeners sandwiched for extra rigidity between the decks, provides strength and better cutting performance.

The top deck is domed, so water and crop debris can roll off the deck, reducing water buildup and deck rust. Each cutter features a "Max Flow" cutting chamber, which allows for maximum air flow between the two decks, further improving material distribution. John Deere added gearcases for reliability and dependability, and stumpjumper for protection against stumps, rocks and other obstacles.

The HX10 Rotary Cutter features a cutting width of 10.5 feet. It incorporates heavy-duty features and is versatile enough to appeal to customers who do



John Deere introduced the MX and HX Rotary Cutters, six new models that combine features from previous models with new technology for increased productivity and safety.

everything from pasture clipping and 2-inch diameter brush to high volume crop shredding. This rotary cutter is well suited to high horsepower, high usage hour applications.

MX Series Rotary Cutters designate mid-duty features in 8-foot size and in a 10.5 foot size. They are good for grass and weed maintenance as well as 2-inch diameter brush. These rotary cutters are suited for tractors under 100 PTO hp.

MX5, MX6, and MX7 Single Spindle Rotary Cutters feature 1/4-inch side skirts, stumpjumper, and 90 gearcase horsepower rating. They replace the 516, 616 and 717 John Deere models.

and \$42 per bag for YieldGard and Roundup Ready corn stacked genetics if a grower's seed or crop is destroyed.

## Sensenig Promoted

LITITZ (Lancaster Co.) — Northeast Agri Systems Inc. announced the promotion of Jay K. Sensenig to Pennsylvania divisions, poultry production sales.

Sensenig joined the company in 1987 and served in various positions, including equipment installation and customer service.



Jay K. Sensenig

Moovin' Your Way!