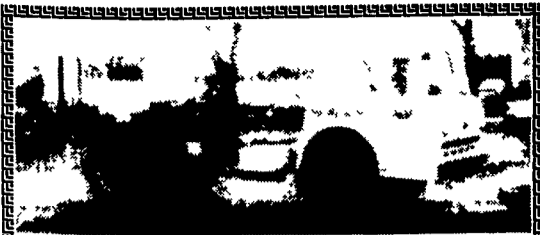


TRUCKS AND TRAILERS

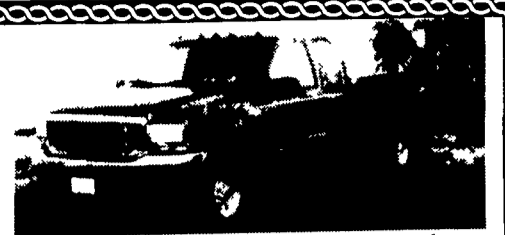
78 GMC
w/366 engine,
5 speed,
2 speed rear,
w/14' Thermo King
reefer body,
gas engine,
21,000 GVW,
\$2500.
215-340-2244
ask for Frank



1975 Ford C8000
5 Speed w/2 Speed Rear, PTO, 35,000 GVW, Good Cab, Cat V8 Diesel Chassis, Decent Cond. Good Farm Truck.
\$1,500
(800) 345-0419 X 2818
Ask for John or Shawn



1972 DIAMOND REO TRUCK
With 4800 gallon vacuum tank, setup to haul liquid manure, 290 Cummins engine, 7 speed, Fuller trans., 44,000 lb. rears, has flotation tires.....**\$19,500**
Without flotation tires.....**\$17,000**
Call for more information. Please no Sunday calls
Lancaster County Phone (717) 733-8528



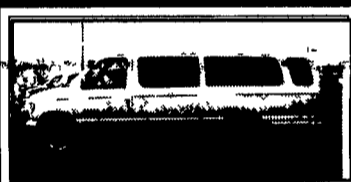
1999 Ford F-250 XLT Super Cab,
Power Stroke Diesel, Automatic,
Loaded, CD, L/S Rear, Tow and
Off-Road Pkg., Extras, 10,800 Miles
\$28,500
717-225-7305

New Holland Moove Out The Live Stock!

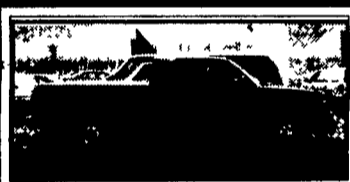


It Doesn't Matter If You Push, Pull, Pile Or Pound... New Holland Ford Has The Best Prices Around! Right Out Of The Gate You Can Graze On Acres Of Selection!

Remember That New Holland Ford Is THE Truck Dealer—No One Offers A Lower Bottom Line Than The Simple, Straightforward Folks At New Holland!



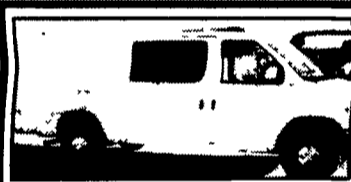
1996 FORD E-350 SUPER CLUBWAGON
XLT • 15 Passenger • 351 V8 Engine
Auto Trans • Dual A/C • Cass • Cruise
Power Windows & Locks • P9992A
Super Clean, Now Only:
\$12,950



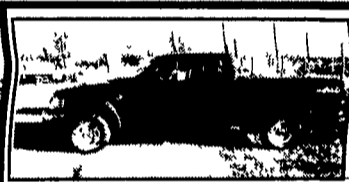
1997 DODGE 1500 SUPERCAB
V8 Engine • Auto Trans • Air Cond
Power Steering/Brakes • Cassette
Super Clean! #HD246B
A Lot Of Truck For Only:
\$15,972



1997 FORD F-350 DUALLY CREWCAB
XLT • Powerstroke Diesel • Air Cond
Power Windows & Locks • Cruise
Cassette #HD160A
It's Spotless! For Only:
\$18,997



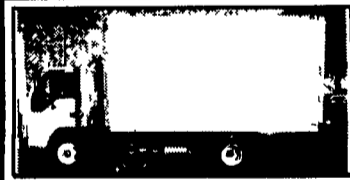
2000 FORD E-250 HD CARGO VAN
5.4 Ltr V8 Engine • Auto Trans w/ O/D
AM/FM Radio • Air Cond • 8600# GVW
Glass - Side & Rear #F153
Work Bins Included!
\$22,848



BRAND NEW 2000 FORD F-150 4x4 SUPERCAB
5.4L V8 Engine • Auto Trans w/ O/D
Air Cond • AM/FM Cassette
#F388
Save Over \$2760 From MSRP!
\$23,991



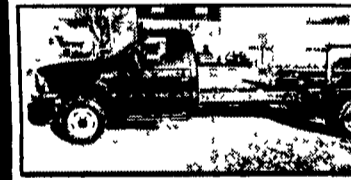
BRAND NEW 2000 FORD F-350 CREW CAB SRW
7.3 Ltr Turbo Diesel • 6-Speed Trans
8800# GVWR • Trailer Tow Pkg
Trailer Hitch • XL Trim #HD250
Save Over \$2560!
\$26,939



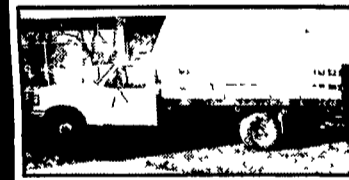
BRAND NEW 2000 ISUZU NPR 14' VAN BODY
142 HP Diesel Engine • 5-Spd Trans
Air Conditioning • Stereo w/ Cass
#4043
Save Over \$7410 From MSRP!
\$27,996



BRAND NEW 1999 FORD F-450 CHASSIS CAB
V8 Engine • Power Stroke Diesel
6-Spd Trans • Air Cond • Pwr Strg/Brks
AM/FM Stereo! #HD175
Save Over \$2700 From MSRP!
\$28,899



BRAND NEW 2000 FORD F-550 CHASSIS CAB
7.3L Diesel Engine • 6-Speed Trans
XLT Trim • Cab Steps • Spare Tire
& Wheel #HD235
Save Over \$4150 From MSRP!
\$29,894



BRAND NEW 2000 FORD F-550 12' EBY DUMP BODY
4x4 • 7.3 Diesel Engine • 6-Speed
Trans • 17,500# GVW • Air Cond
Ready to work! #F7
Ideal For Landscaper!
\$41,946

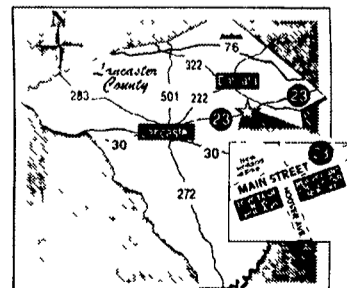
TOUGH TRUCKS... EASY DEALS!

Credit Available!

We know there are many people that believe they don't have good enough credit to purchase a new car. If you have been denied credit before or have had late payments, we can help!

Call Mike Conners at (717) 354-4901 today and we'll help you purchase your new car.

New Holland



508 W. Main St. (Route 23) New Holland
Call 717-354-4901 or 1-800-642-8605

All prices on new trucks include any factory rebates (including Ford's commercial rebate), if applicable. Tax, tags and license fees additional.