

35 TRUCKS AND TRAILERS
 84 Chevy C60 scissors dump, diesel, \$4000. 717/792-2751.

1978 Ford Bronco w/ snow plow \$850. 1979 Dodge 4x4 pickup truck, V-8, auto, \$550. 1977 International dump truck DT466 diesel, 5+2, \$3,500. 1980 International 10 wheel dump truck, 200 Cummins, auto, \$5,900. 570-874-1340.

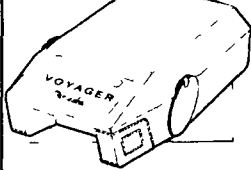
Warehouse Direct To Your Door!

See us at PA Farm Show (Harrisburg) Main Floor - East End - Booth #590

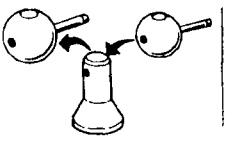
Trailer Hitches Class 1 thru 5



Brake Controls \$59.95

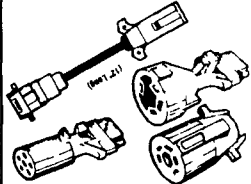


Convert-A-Ball \$31.95



REMOVE BALL-REPLACE WITH DESIRED SIZE

Elec. plugs and adapters



Pintle Hooks and Accessories



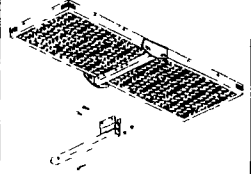
Bike Racks



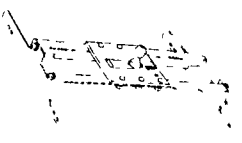
Triple Tow Mounts Black or Chrome balls



Cargo Carrier \$89.99



Fold-down Gooseneck Hitch



QUICK HITCH



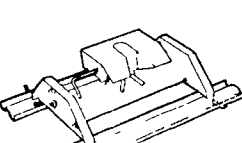
Pop-Up Gooseneck Hitch



Extend-A-Truck \$99.00



Firehawk 5thwheel Gooseneck Hitch



Adjustable Ballmounts

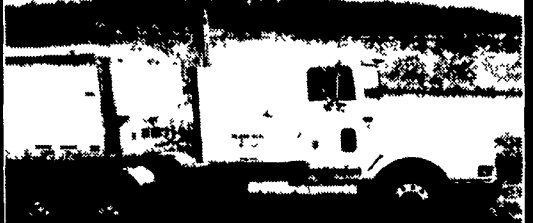


Free UPS shipping for most orders
 Call For a Free Catalog
 1-800-932-8373
 1-800-WEAVER-D
 Weaver Distributing
 Rd 2 Box 470
 Fredericksburg PA
 17026

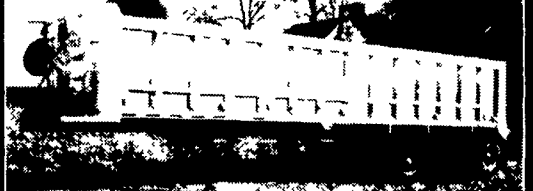


1980 Mack 10 wheeler dump, 300, 10 speed w/1 way 11-1/2' snowblade \$15,000
1979 Chevy C70 dump, 366, 5+2 speed, w/Myers 10' 2-way blade, tailgate salt cinder \$5,500
Ford F350, 4x6, Boss V-plow, in-bed salt cinder \$15,500
Austin Western 6 wheel drive articulating grader, 11' 1-way blade on front, 11' wing plow, Detroit power \$17,000
Fiat Allis 745B articulating loader \$19,500
Walters Snowblower, AWD, AW steer, 450 hp engine in back, 250hp engine in front, adjustable chute, 8' snowblower on front, twin augers \$16,500
 717-657-1516
 Offers welcomed

FOR SALE



96 INT 9400, 22 5 Alum, 280,000 Miles, 217 WB, 430/470 Detroit, 10 Speed, Like New \$42,500 OBO



98 MAC, 40/39 102 Wide, Grain Chute, Barn Door, Roll Tarp, 24 5 Rubber, Alum Wheels \$31,500 OBO

MCGUIRK BROS.
 (410) 838-4828 (before 8 p m)

LEFEVER BROS. CHEVROLET GEO. CHEVY TRUCKS

YOUR DIRECT LINE TO GENUINE GM PARTS

(800) 533-3837

When you call the number listed above, you'll reach our wholesale parts specialists, who can help you keep your GM repair work moving quickly.

Ask about:

- Specializing in GM Medium Duty Trucks, Current and Obsolete.
- \$500,000 Parts Inventory.
- Parts Locator for Those Hard to Find Items.
- We Ship Anywhere, Local Delivery Available.
- Experienced, Knowledgeable Personnel.

Mon, Tues, Thurs, Fri
 7 30 a m - 4 30 p m
 Weds 7 30 a m - 8 30 p m
 Major Credit Cards Accepted

(717) 432-9697

Quality Dealer Since 1921
 406 U S Rt 15, Dillsburg, PA 17019



We want your business.



24 HR PARTS & SERVICE MON. - SAT.

Bergey's
 AUTOMOTIVE EXCELLENCE SINCE 1924

GMC COMMERCIAL VOLVO

SHOP OUR WEBSITE
 bergeys.com

TRUCK CENTER

SHOWROOM HRS
 M-F 9am to 9pm
 Sat 9am to 4pm
 CLOSED SUNDAY

446 Harleysville Pk. (Rt. 113)

(215) 721-3400 Souderton-Franconia, PA.

CALL TOLL FREE

(877) 237-4393

EQUIPPED W/EXTRAS! · 877-237-4393



1999 VOLVO W664 TRUCK
 #60778L 300 hp CAT, 9-Spd, 16,000 Ft Axle, 40,000 R-Axle, A/C, D C Frame, Radio, 14Rt Gallon Body Well Equipped with Extras! **\$78,500 w/FET**

ALL THE OPTIONS! · 877-237-4393



2000 VOLVO VNL64T DAY CAB
 VNL64T, 435 hp Cummins, 10-Spd, 40,000 Air Ride Rear, Full Fainng Package, Alum Wheels, Engine Brake, All The Options & And Much More! **\$83,300 w/FET**

PRICED RIGHT! · 877-237-4393



2000 VOLVO W664 LONG WB CHASSIS
 269" Chassis, 305 hp Cummins, 9-Spd, 20,000 Ft, 45,000 Rear, A/C, Radio, D C Frame, Great chassis for special body application! **\$72,300 w/FET**

PRICED TO SELL! · 877-237-4393



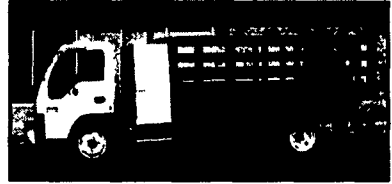
2000 AUTOCAR ACL64B CHASSIS
 #61133, 400 hp Cummins, 10-Spd, 46,000 T-Ride Rear Axle, 20,000 Front Axle, 245" Wheelbase, Great Roll-off Tr-Axle or Boom Chassis! **\$85,500 w/FET**

PRICED TO SELL! · 877-237-4393



'96 VOLVO EXTENDED SLEEPER
 #4975, Model WIA64TES, Volvo 425 HP Diesel, 10-Speed, 60" Deluxe Sleeper, Air Ride, Eng Brake, Alum Whls, 480,000 Miles, CLEAN UNIT! **\$41,900**

DUMP BODY! · 877-237-4393



'99 GMC W5500 W/B-PACK & STAKE DUMP
 #60702, W5500, 175hp Diesel, Auto, A/C, AM/FM Stereo, 16,500 lb GVW, Reading Rev-Pac Tool Box, 12" HD Stake Body with Dump Hoist, And More! **\$37,900**

EXCELLENT CONDITION! · 877-237-4393



'93 GMC C7000 TOPKICK
 #4947, 25,950 GVW, Under CDL-3116 CAT DSL-185 HP, 5-Speed Trans, Air Cond, 11R225 Tires, 247" Wheelbase, 22" Morgan Van, Side Door, Excellent Condition **\$23,900**

GREAT DEAL! · 877-237-4393



'94 CHEVY 3500HD VAN
 #6090, 15,000 lbs GVW, 6 5L Turbo Diesel, Automatic Trans, Air Cond, NEW 14" Supreme Insulators, Reefer Body (No Unit) **\$15,500**

WELL-MAINTAINED! · 877-237-4393



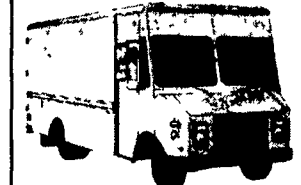
'93 WHITE GMC WIA64TES TRACTOR
 #93con, WIA64TES, Cummins N14 - 410hp, Fuller 13-Spd, Extended Sleeper, Jake Brake, Air Susp, A/C, 11R22 5 Tires, 304k, Service Records Available! **\$25,900**

BIG SAVINGS! · 877-237-4393



'89 GMC 7000 SERIES VAN
 #4930, 89 GMC 7000 Series with 22" Dry Freight Box Van, 30,000 GVW, 366 V8 Gas, 5-Speed, SAVE! **\$5,900**

VERY GOOD CONDITION! · 877-237-4393



'89 CHEVY P20 STEP-VAN
 #4993, 10' Steel Body, Single Rear Wheel, 9000 GVW, V6 Automatic, Double Rear Doors, VERY GOOD CONDITION! **\$5,900**

Illustration Purpose Only Not Actual Photo Of Vehicle

VERY GOOD CONDITION! · 877-237-4393



'87 CHEVY P30 STEP-VAN
 #4994, 12 Aluminum Body, Dual Rear Wheels 10,000 lb GVW, Roll-Up Rear Door, 350V8, Automatic, VERY GOOD CONDITION! **\$6,600**

Illustration Purpose Only Not Actual Photo Of Vehicle