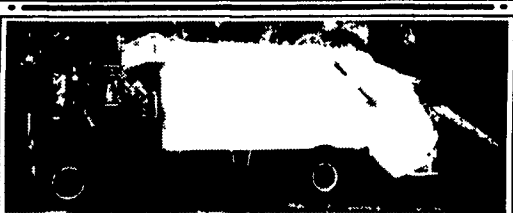


TRUCKS FOR SALE

1998 Chevy K2500 4x4 Ext. Cab Pickup,
Fully Loaded w/Cap.....**\$24,000**
1993 International 9670, Series 60, 10 spd.....**\$12,000**
1993 International 9700, N-14, 10 Spd.....**\$10,000**

Call **WATTS TRUCKING**
at **800/258-6995**



1987 FORD NL8000
3208 Cat, 5x2, 20 yd. loader master
\$15,000
Call: **410-592-5242**



'97 Ford F-450 Power Stroke diesel Auto trans
12' dump body 6,000 miles since new PS&AC
\$29,500, Harrington, DE
(302) 284-8774



Isuzu 2000 FRR, 200 HP 6 Cyl Diesel,
Allison Auto, 19,500 GVW, A/C,
AM/FM Cass, 19.5" Tires, 191"
Wheelbase.



(2) **Isuzu FTR**, 200 HP 6 Cyl. Diesel,
(1) Allison Auto., (1) 6-Speed Manual,
25,950 GVW, A/C, AM/FM Cass., Dual
50 Gal. Tanks, LOTS OF GOOD
STUFF!



Isuzu 2000 NPR, Gas, 11050 GVW,
250 HP, V8 Engine, Auto Trans, A/C,
AM/FM Cass, 14' Van Body. **GREAT
PRICE OR LEASE!**

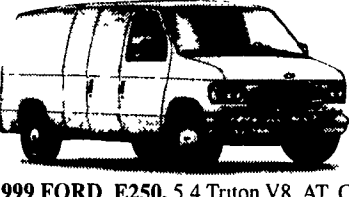


Isuzu 2000 NPR, 175 HP Diesel, Auto
Trans, A/C, AM/FM Cass., 14,500
GVW, Will Take 14' Body.

**January Special NPR Gas FREE 48 Months Extended
Warranty On Units Delivered Before 1-31-00**



1997 ISUZU NPR, 250 V-8, Gas, Auto,
AC, 11,500 GVW, 14' Van w/Ramp,
48,000 Miles



1999 FORD E250, 5 4 Triton V8, AT, CD
Player, 9,000 Miles, Full Shelving Pkg.
w/Bulk Head, Swing Type Side Doors, No
Windows in Cargo Area Call Keith

WE DELIVER ANYWHERE!!!

FIVE STAR ISUZU ★★ ★★
1810 South 19th Street, Harrisburg, PA 17105
Toll Free **800-438-4744** Keith Eshelman

Providence



Chrysler - Plymouth - Dodge - Jeep

**2000 Dodge
RAM SLT
2500 Series**
w/power angle plow!

**2000 Dodge
RAM 3500 QUAD
CAB SLT 4x4**
5.9 Turbo Cummins!

**2000 Dodge
RAM 2500 QUAD
CAB SLT 4x4**
5.9 Turbo Cummins!

Take Your Pick. . .

**\$500
FARM
BUREAU
REBATE!**



. . . or
**\$300
COMMERCIAL
REBATE!**

LUBE, OIL & FILTER

\$22.95 Up to 5 qts. of Oil & Mopar Filter
Also includes complete underhood check of all belts, hoses, and fluid levels. Diesels extra.
Offer expires 3/31/00

**CALL BRIAN OR BOB NOW
AND MAKE AN APPOINTMENT!**

ALIGNMENT SPECIAL

Any Chrysler, Plymouth, Dodge or Jeep
Car/Van 2 wheel.... **\$44.95**
Car/Van 4 wheel.... **\$49.95**
Any Dodge Truck.... **\$45.95**
Offer expires 3/31/00

TIRE ROTATION

\$24.95
Rotate & Balance Tires
Dual Wheels extra.
Offer expires 3/31/00

SERVICE MON, WED, FRI:
7:30AM-5PM

HOURS: TUES, THURS: 7:30AM-7PM

SALES MON-FRI: 9AM-9PM

HOURS: SATURDAY 9AM-4PM

Call Toll-Free **877-288-9996** or Phone **284-9900**

**804 Lancaster Pike, Quarryville
Rt. 272, Just South of Lancaster**

AL HAMILTON MANAGEMENT COMPANY

P.O. Box 157 • 55 Doe Run Road • Manheim, PA 17545
Phone: **717-665-7145** • Fax **717-665-2137**

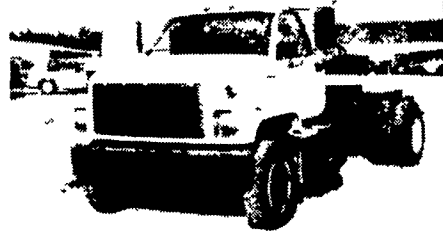
★★★ "CLEANEST TRUCKS AROUND" ★★★



1992 GMC Topkick
3116 Cat Diesel, 6 Spd. Trans., PS, Air Brakes, Lift Axle, 22' Flat Dump, 52,000 GVW, Low Miles - **\$28,500**



1985 Ford F-700
370 Gas, 5 Spd. Trans., 2 Spd. Rear, Hyd. Brakes, 21' Eby Cattle Body, Exc. Cond. **\$15,500**



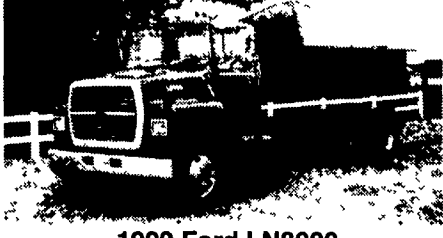
1994 Chevy Kodiak C&C
3116 Cat 200 HP, 6 Spd. Trans, Hyd Brakes, PS, 180 WB, 108 C.A., Low Miles **\$17,500**



1991 Ford LN9000
w/New 10' Dump, L-10 Cummins, 9 Spd Trans, 34,700 GVW **\$25,500**



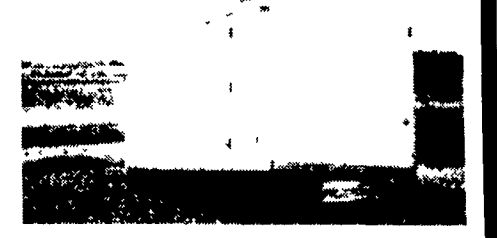
1994 Ford LNT9000
L-10 Cummins, 280 HP, 10 Spd. Trans, PS, Air Brakes, A/C, Custom Int., 260 WB, 192 CA, 56,000 GVW - **\$38,500**



1992 Ford LN8000
C&C 7.8 L Diesel, 210 HP, 6 Spd. Trans., Custom Int., 234" WB, 168" CA, 33,000 GVW - **\$19,500**



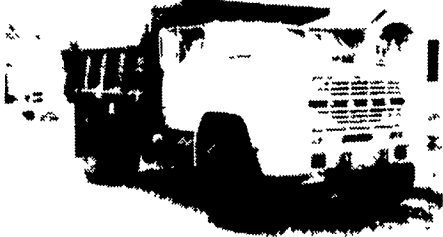
1993 Int. 4900 C&C
DT-466, 6-Spd. Trans., 32,000 GVW, Custom Int., A/C, 186 C/A, 254 W.B., Exc. Cond. **\$22,500**



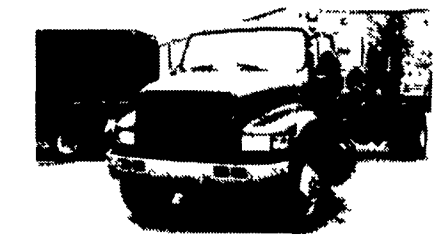
Van Bodies
(2) 14' - (1) 20'
\$1,000 Ea.



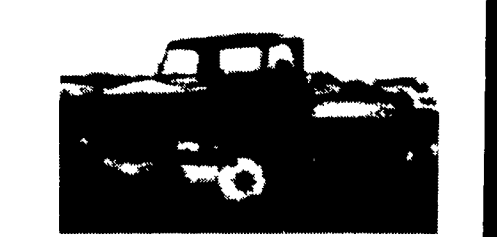
1995 Ford LN8000
8.3 Cummins, 210 Hp 6 spd Trans, PS, Air Brakes, A/C, 35,000 GVW, New 11' Dump **\$35,500**



1983 Ford F800
370 Gas, 5 Spd Trans, 2 Spd. Rear, 9' Dump w/Pintle Hook, Cent Hyd Insp Ready To Go For Only **\$4,500**



'91 Int. 4900 C&C
DT-466, 6-Spd Trans, 32,000 GVW, Custom Int., A/C, 186 - C A, 254 - W B, Exc Cond **\$19,500**



1995 International 4700
DT466, 190 HP, 25 500 GVW, 236 W B, 124 C A, Low Mileage, 6+1 Transmission, AC, Custom Cab, Mint Condition - **\$25,500**