

Anthony L.

# LANDIS

**AUTO SALES**

3394 Division Hwy., New Holland, PA 17557 (717) 355-0644  
Rt 322, 1-1/2 mi west of Blue Ball



**95 FORD F150 XL**,  
X-Cab, 300, 5 Sp, PS, PB,  
A/C, Tilt, Cass, Dual Tanks,  
69,900 Mi, Dk Green  
\$9,500



**97 FORD F-150 XLT 4x4**  
4 2 AT, PS, PB, PW, PDL,  
AC Cruise, Cassette,  
77,000 Mi, Blue  
\$14,900

## CASH FOR USED DIESEL TRUCKS!

WE NEED 3/4 TON TO ONE TON:  
 • FORD DIESELS • DUALIES  
 • SUPERCABS • DUMPS  
 • CREW CABS • UTILITY BODY  
 • DODGE CUMMINS • FLAT BEDS  
 • 2WD OR 4X4 • CAB & CHASSIS  
 • SUPER DUTIES

LOW MILEAGE ONLY PLEASE

Before you sell or trade your diesel  
in somewhere else for LESS.

CALL US!

We Pay More for Used Diesel Trucks Than Anyone.

717-949-2000

TRY US!

OR

610-678-3243

Ask for Smokey or Kay



RD 7, Box 405  
Lebanon, PA  
17042

## USED VEHICLES FOR SALE

- 1993 CHEV. SUBURBAN 1500 4x4, AT, 106k miles..... \$13,500
- 1995 JEEP CHEROKEE 4x4, AT, 4 Door, V6, 84k miles..... \$8,950
- 1990 DODGE RAM 250 4x4, AT, Cummins Diesel, 150k miles..... \$9,850
- 1995 CHEV. K2500 EXTEND CAB 4x4, AT, 69k miles..... \$17,500
- 1994 DODGE RAM 2500 4x4, Diesel, AT, AC, 100k miles, Green & Silver .. \$15,500
- 1990 FORD F150 4X4 XLT, AT, V8, Most Options, 133k miles..... \$4,995
- 1997 FORD MAXIVAN, AT, 5.4L V8, 15 Passenger, 17k miles..... \$19,500

## SCHAEFFERSTOWN AUTO & TRUCK SALES

Rt. 501, 1-1/2 miles South of Schaefferstown  
**717-949-2812**

# KEIM

(717) 768-8225  
(800) 223-KEIM

RT. 30 Lincoln Highway East  
Paradise, PA 17562

YOUR TRUCK, VAN & 4x4 HEADQUARTERS

**1-800-223-KEIM**



**99 CHEVY 1 TON REG. CAB**  
2WD, Stake Body, 350 V8, AT, A/C



**93 CHEVROLET K1500 SILVERADO SHORTBED**  
V8, AT, A/C, Teal/Silver



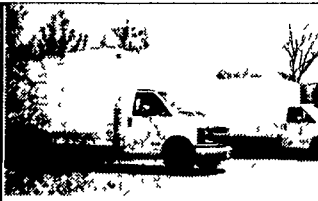
**97 CHEVROLET C2500 CHEYENNE LONGBED**  
350 V8, AT, A/C, Forest Green



**98 CHEVY SILVERADO**  
1 Ton Extend Cab Dually 4x4, Blue/Gold, 350 V8, AT, Only 6,000 Mi  
Was \$27,900 Now \$25,777



**99 CHEVROLET K3500**  
Crew Cab Single Rear Wheel 454 V8 AT, A/C, Only 13,000 Mi, Dark Blue



**(2) 2000 CHEVY G30 CUTAWAY HIGH CUBE VANS**  
12' & 14' Bodies, 350, AT, A/C, Both White

**2 New Plows**  
7 1/2' & 8' Unimounts  
As Low As  
**\$2,695**



**2000 CHEVY C30 CHASSIS CAB**,  
454 V8 AT, A/C, You pick the body

## ALUM-LINE, INC.

The Leader In Heavy Duty Construction

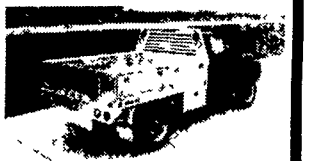
"More Trailer - Less Money"



All-Aluminum Livestock Trailers, Bumpers & Goosenecks • 8 to 39' Lengths • Double Deck Package Available

"The Finest Truck Bed You'll Own"

All-Aluminum Stake Body Beds • 6 To 24' Lengths • Many Standard & Optional Features • All Types of Tool Boxes



Also from Alum - Line, a complete line of aluminum pickup boxes and truck tool boxes

**Wolfe Auction**  
9801 Hansonville Rd.  
Frederick, MD 21702  
800-443-9580



**2000 FORD F350 CREW CAB DUALY 4X4**  
Power Stroke Diesel, XLT, AT, A/C, PS, PB, PW, PL, C, T, CD Player, L.S. Rear, Alloy Wheels, White w/Tan Leather, Only 3,000 Miles, #F900



Preferred Warranties Available on Most Trucks

## Bobby Gerhart's Truck World

2400 E. Cumberland St.  
Rt. 422  
Lebanon, PA 17042  
717-273-7995

Mon. - Fri. 9-8, Sat. 9-3



**99 FORD F350 SUPER DUTY QUAD CAB 4X4 DUALY** Power Stroke Diesel AT XLT Lanat. (Most Options), CD Player 17,000 Miles, Black w/Sandalwood Bottom #F893



**96 FORD F250 XL**, Trim 4x4, Powerstroke, Diesel, 5 Sp., A/C, AM/FM Cass, Dual Tanks, 83,000 mi., Red



**99 FORD F450 SUPER DUTY CONTRACTOR DUMP** Power Stroke Diesel, 6 Spd, A/C, AM/FM, 33,000 Miles, White #F889



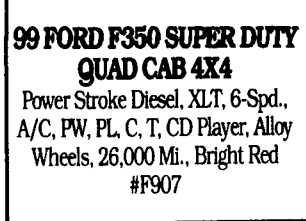
**99 FORD F350 CREW CAB 4x4**  
Short Bed, Triton V10, AT, XLT, Most Options, 8,000 Miles, Factory Warranty, Maroon, #F880



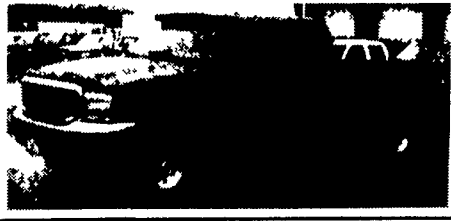
**96 FORD F350 CREW CAB DUALY POWERSTROKE DIESEL**, XLT, AT, A/C, PW, PL, Cruise, Tilt, CD, Alloy Black, Charcoal Int, 29,000 Mi, #F898



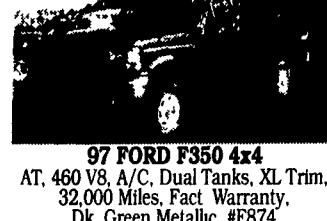
**97 GMC K3500 CREW CAB DUALY 4X4** 6.5 Turbo Diesel, AT, A/C, C, T, 68,000 Miles, Cass, Autumn Wood, #G210



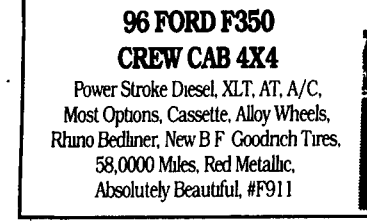
**99 FORD F350 SUPER DUTY QUAD CAB 4X4**  
Power Stroke Diesel, XLT, 6-Spd., A/C, PW, PL, C, T, CD Player, Alloy Wheels, 26,000 Mi., Bright Red #F907



**96 FORD F250 4X4, XLT**  
AT, Power Stroke Diesel, A/C, Most Options, Red & White, 72,000 Miles, #F891



**97 FORD F350 4x4**  
AT, 460 V8, A/C, Dual Tanks, XL Trim, 32,000 Miles, Fact Warranty, Dk Green Metallic, #F874



**96 FORD F350 CREW CAB 4X4**  
Power Stroke Diesel, XLT, AT, A/C, Most Options, Cassette, Alloy Wheels, Rhino Bedliner, New BF Goodrich Tires, 58,000 Miles, Red Metallic, Absolutely Beautiful, #F911



**95 DODGE RAM 2500 4x4**  
Cummins Turbo Diesel, AT, St Pkg, AM/FM, Cass., Dk. Green w/Grey Cloth Int., 69,000 Miles, #D291



**96 CHEV 2500 EXT. CAB 4X4**  
6.5 Turbo Diesel, 5 Spd., A/C, C.T, 68,000 Miles, Teal Green, #C555



**94 FORD F350 4X4 DUMP**  
Power Stroke Diesel, 5 Spd., Power Angle Plow & Spreader, 53,000 Miles



**95 DODGE RAM 2500 CLUB CAB 4X4**  
Cummins Turbo Diesel, Laramie SLT, 5-Spd, Most Options, Only 50,800 Miles, 4-10 LS, Grey, #D292



**93 FORD F250 SUPER CAB 4X4**  
7.3 Diesel, XLT, AT, A/C, PW, PL, Cruise, Tilt, Cass, Mocha Frost & Gold #F890



**95 CHEV 3500 H.D. 18 FT. CUBE VAN**  
AT, 350 V8, 14,000 GVW, Supreme Body w/Side Door, 76,000 Miles, White #C542



**93 GMC SIERRA SLE CREW CAB DUALY 4x4**, 454, AT, A/C, Cruise, Tilt, PW, PL, Gray & Silver #G212



**95 CHEV. KODIAK 12 FT. DUMP**  
Dump Cover, 5.7 V8, Allison AT, 25,600 GVW, 33,000 Miles, Red, Ready to Work, #C550



**(2) 95 GRUMMAN GMC 18 FT. STEP VANS**  
AT, 6.5 Diesel, Very Nice Condition



**94 CHEVROLET 2500 4X4**  
6.5 Turbo Diesel, AT, A/C, Cruise, Only 54,000 Mi., Maroon & Gold #C529



**94 GMC K3500 CREW CAB 4X4 SW**  
AT, 454 V8, AM/FM, 49,000 Miles, Red & Black, #G211



**94 CHEV K3500 CREW CAB DUALY 4X4**  
6.5 Turbo Diesel, AT, A/C, Silverado, Most Options, 94,000 Miles, Blue & Silver #C548



**93 CHEV 3500 EXT. CAB DUALY CENTURION CONVERSION**  
AT, A/C, Most Options, 454 V8, 42,000 Miles, Red, Absolutely Like New! #C551



**89 CHEV. 3500 CREW CAB**  
with Utility Body, AT, A/C, 350 V8, 65,000 Miles, Dk Blue, #C556