

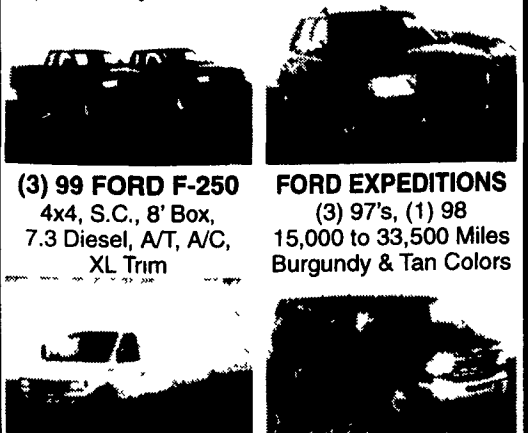
(2) 1978 Chevy pickups, 4WD, 1 needs minor body work, both mechanically good, \$2000/both. 717-938-6305

14' stake bed w/4' sides, tailgate, pump & hoist included.  
**\$2,000 OBO**

**540-833-8315**

**1991 & 1992 Ford 350's**  
7.3 dsl., 14,000 GVW, 5 spd.  
**\$5,200 & \$7,200**

**(570) 539-8508**



**(3) 99 FORD F-250**  
4x4, S.C., 8' Box, 7.3 Diesel, A/T, A/C, XL Trim

**FORD EXPEDITIONS**  
(3) 97's, (1) 98  
15,000 to 33,500 Miles  
Burgundy & Tan Colors

**98 FORD E-350**  
16' Van, Roll Up Rear Door, Diesel, A/T, 11,000 GVW

**99 E-35 15 PASS. VAN**  
XLT, 5.4 V-8, Dual Air, Green, 17,400 Miles



**Sunbury Motors**

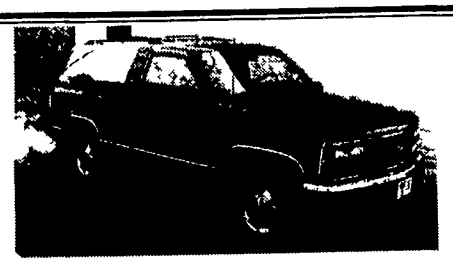
943 N. 4th St., Sunbury, PA 17801

**570/286-7746**

In Pa. Watts **800/358-8090**



**1989 Peterbilt - 400 Cummins, 9 spd., 350,000 on rebuilt. Dual exhaust. New shocks & brakes. Sharp. \$12,500**  
**717-235-6286**



**1992 SILVERADO BLAZER 4X4**  
5.7, Auto, PS, PB, PDL, PW, P. Seats, Tilt, Cruise, A/C, 104,000 Miles, Black, 4 New Tires, Excellent Plus Cond.  
With 6 Mo. 7500 Mi Extendable Warranty  
**\$11,995**

**REBER AUTO CO.**

Lincoln Ave. & Cumberland Sts. (for 29 yrs.)

Lebanon, PA **717-273-5941**

**MOTOR TRUCK EQUIPMENT COMPANY**



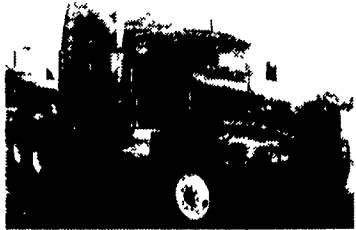
**KENWORTH**

**USED TRUCK SALES**  
Carlisle  
717-766-8000

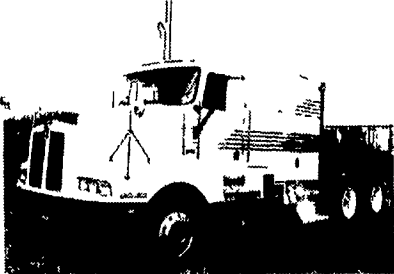
"WE BUY USED TRUCKS" Call: Tim Mitchell (717) 766-8000



**1994 Kenworth T600**  
Aerodyne II, 425 HP, Detroit 9 Speed Trans., 3.90 Ratio Rears  
**Reduced \$25,900**



**1995 Kenworth T600**  
Aerocab, 400 HP Cummins N14, RTLO 10 Speed, 3.70 Rears  
**Reduced \$36,900**



**1994 Kenworth T600**  
400 HP Detroit S-60, 9 Speed Trans., 4.11 Ratio, 42" Sleeper  
**\$24,900**



**1996 Peterbilt 379**  
Cat Powered, 10 Speed Trans., 4.33 Rears, 18-1/2 Ft. Cobia Aluminum, Air Suspension. Balance on Engine, Warranty - 5 years/500,000 Miles  
**\$77,500**

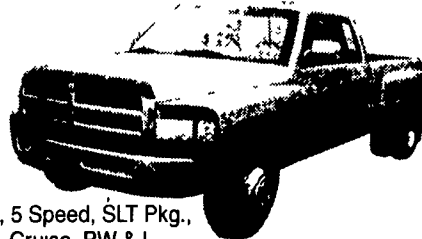
**THE HONDRU EXPERIENCE**

OVER 200 TRUCKS AVAILABLE FROM OUR 4 DEALERSHIPS

**E-TOWN CHEVROLET**

Oldsmobile Pontiac  
Route 230 E-Town • 717-361-7776

**1998 DODGE 3500 QUAD CAB, 4X4, DUALY**



V-8, Gas, 5 Speed, SLT Pkg., Tilt & Cruise, PW & L

**E-TOWN DODGE**

Route 230 E-Town • 717-367-6644

**1996 DODGE 3500 CLUB CAB**

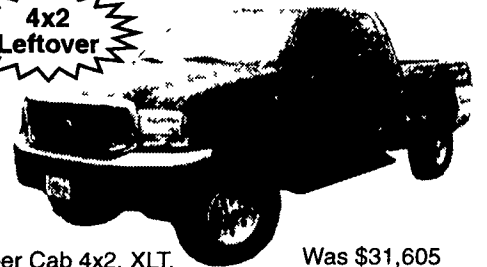


Dually, Diesel, SLT Pkg., Auto., Tilt & Cruise

**PHILLIPS FORD**

Route 72 Manheim • 717-665-3551

**1999 FORD F250**



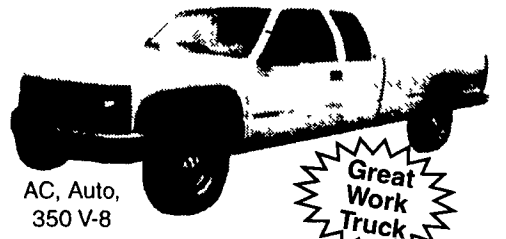
Super Cab 4x2, XLT, Diesel

Was \$31,605  
**Now \$26,700**

**MANHEIM CHRYSLER PLYMOUTH GMC**

Route 72 Manheim • 717-665-2473

**2000 GMC 2500 SIERRA 3/4 TON EXT. CAB**



AC, Auto, 350 V-8



All prices include Rebates, Exclude Tax, Tag and \$40 Dock Fee

**LOADS OF USED PICKUPS CALL ANY STORE FOR DETAILS**

Email - hondruauto@aol.com

OVER 20 CHASSIS IMMEDIATELY AVAILABLE FOR BODY INSTALLATION AT OUR LOCAL BODY COMPANIES!

1982 IH 20' Roll Back Truck  
31,700 GVW, good cond.  
**\$9,750 OBO**  
717-626-0435

**1947 Chev. Stake Bed Truck**  
13,000 GVW, 60,000 Original Miles, Excellent, Always Garaged  
**610/593-2407** (Ext 16)  
Fax **610/593-2482**

**1978 Mack R Model Tractor**  
Dai-Kool 4600 gal. Milk Trailer  
**1973 L700 Ford, 2700 gal. Milk Tank** (will separate)  
**1983 GMC General Tractor**  
**570-875-3755**

**EBY +USED EQUIPMENT**

**LIVESTOCK BODIES**

- 9'x82"x6" Eby
- 14'x96"x6'3" Eby
- 9'x94"x6'9" Eby w/Deck Rail
- 19'x96" Eby w/Deck Rail
- 10'x96x6'6" Eby

**GOOSENECKS**

- 1993 Cornpro G.N. 16'x7'x6'
- 1981 Eby 20' x 8'x 6'6"

**M.H. EBY, INC.**

1194 Main St. (Route 23)  
Blue Ball, PA 17506  
(717) 354-4971  
(800) 292-4752  
4435 State Route 29  
West Jefferson, OH 43162  
(614) 879-6901  
(800) 752-0507

**WHEN AGRICULTURE IS YOUR LIFE,**



Eby's complete line includes models for every requirement.

**BODIES**

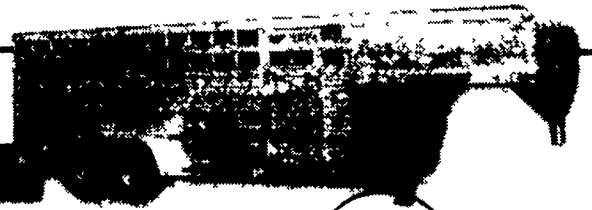
- Gooseneck Trailers** - Lengths 14--32', Widths 7', 7'6", 8' and 8'6"
- Bumper Hitch Trailers** - Lengths 12' - 18'
- Grain Bodies** - Lengths to 24', plus landscape and general purpose dumps to 12'
- Flatbed Bodies** - Lengths to 32' in 5 widths
- Landscape Bodies** - Lengths to 12'

**GOOSENECKS**

**BUMPER HITCHES**



Eby is the leading manufacturer of aluminum bodies and trailers for agri-transportation. Our products are designed for superior strength, reduced weight for greater payload capacity, minimum maintenance and higher resale value. In addition to premium standard features, we offer full custom options built to your specs.



**Blue Ball, PA 800-292-4752**

For quality equipment and customer service that works as hard as you do, nobody offers more than EBY.

**THE EQUIPMENT CHOICE IS EBY.**