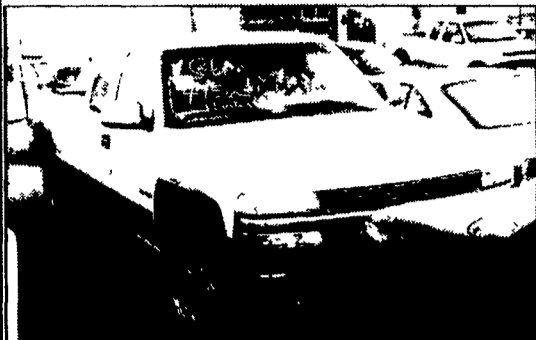


35

TRUCKS AND TRAILERS

HANDYMAN SPECIALS



99 Chev 2500, 3 Door, 4x4, 6.0 V8, Silverado, 2,000 Miles \$23,500



97 Ford 150, Ext. Cab, 4x4 \$13,500



95 Ford Crew Cab, Dually \$5,900

All water damaged by Hurricane Floyd. All run & drive

THOMPSON MOTORS

Rts. 212 & 412
Springtown, PA
610/346-8588

Call 610-346-8890 from your fax for our "fax on demand" inventory list.

E.M. KUTZ, INC

USED & NEW EQUIPMENT SALE

- Meyer used TM 6 5 poly plow with E47 power unit \$1,200
- Used Boss 9'2" V-plow for mid-1980s GMC \$1,250
- Fisher 8' Minute Mount plow w/electric power unit & mount for your truck, used one year \$1,850
- Fisher 7 1/2' Minute Mount belt drive plow, includes moldboard, cylinder & plow half of framework \$750
- Used 10' Henderson spreader, new chain & clutch, gas engine \$1,850
- Misc used Fisher belt drive kits, electric units, & misc headgears Call For Pricing
- Used 11' manual reverse plows \$750
- Used 9' & 10' one-way plows \$325
- Used 9' plow, one-way with hitch \$500
- Misc used hydraulic valves & tanks for central hydraulic systems Call For Pricing
- 14' Contractor body \$600
- Custom ambulance body for larger truck \$950
- 17 1/2' Steel dump body, no cylinder \$950

NEW EQUIPMENT

- Pickup bed, take off GMC \$650
- Pickup bed, take-off for 1999 F250 \$750
- 8' platform body for pickup \$750
- Valley Manufacturing E-Z Dumpers (3 available) \$1,895
- 9' Heil Dump body with hoist & cab shield \$2,900
- New Fisher & Meyer spreaders Call for Pricing
- New Fisher & Meyer snowplows Call for Pricing

COMPLETE INVENTORY OF DUMP BODIES, STAKE BODIES, FISHER & MEYER SNOWPLOWS

E.M. KUTZ, INC.
WHITEHALL, PA • READING, PA
1-800-974-9779

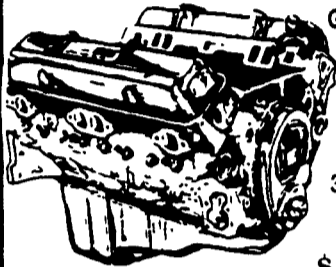


1988 CHEVY SILVERADO
1 Ton 4x4, AT, PW, PL, Cruise and Tilt with 7 1/2' Western Power Angle Plow, Excellent Condition
\$7,500 OBO • 610-965-5465

JONES



We want your business.



GM GOODWRENCH
350 V8 1973-85
Part Number 10067353
New Engine - Not Rebuilt
36 Month or 50,000 Mile Warranty

New Engine - No Core Fee **\$1,295⁰⁰**

WE'LL MATCH ANY COMPETITOR'S PRICE!

Goodwrench Transmissions Now In Stock! Call For Great Prices

Call 394-0711 for prices on other New or Remanufactured Goodwrench Engines. 2.5 Liter thru 454 cid. Gas and Diesel

Chevrolet - Pontiac - Olds - Buick - Cadillac - GMC

JONES GM PARTS CENTER

1335 Manheim Pike, Lancaster, PA 17604
Easily Located on Rt. 72 Just off of Rts. 283 & 30
Hours: Mon-Fri 7:30 a.m. - 8 p.m. Sat 7:30-3
(717) 394-0711



'88 Peterbilt 377, 36" bunk, 350 Cat, 3 line hyd \$12,000. '91 Eagle Bridge trailer, 41' long, 60 cu yd, self unloading conveyor, \$13,000. 410-778-1403.

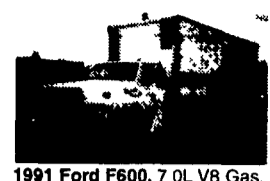
1983 Western Star liquid manure truck, 350 Cummins, 15-spd RT12515 trans, 20k steering axle, 44k rear axle, 5:29 ratio, flotation tires, double pumps, vacuum & pressure system, 8" side load, 8" hyd. boom load, top load, good condition, \$18,500. 717/866-7822.

Int. Truck Model 1954, 1989, GVW 32,800, Only 111,000 Miles w/Jerre-Dan 15 Ton Rollback \$25,000 (215) 943-8305

LEED TRUCK CENTER
402 South Chiques Rd Salunga Exit, Route 283
717-898-1200



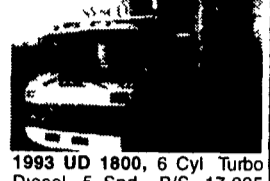
1992 IHC 4700, DT 360, 5 Spd P/S, Hyd Brakes, No CDL Needed 22' Platform Dump, 25,500 GVW, Insp, Very Clean Call For Details.



1991 Ford F600, 7.0L V8 Gas, P/S, 5 Spd, Hyd Brakes, No CDL Needed, 21,000 GVW, 24' Van with L/G, Very Clean Reduced to \$6,900.

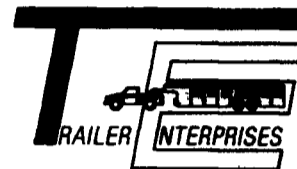


1987 Isuzu NPR, 3.9 Turbo, 5 Spd, P/S, 11,000 GVW, 14' Van Body, 208,000 Miles As Is Only \$3,000.

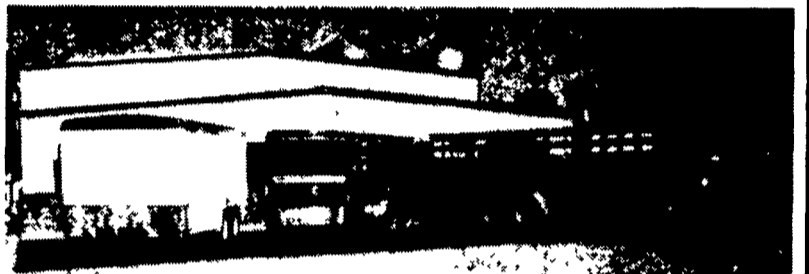


1993 UD 1800, 6 Cyl Turbo Diesel, 5 Spd, P/S, 17,995 GVW, 12' Morgan Reefer, with Thermo King & Electric Stoby, Swing Rear Doors Call For Details.

"Revvin' to take care of ALL your trailer needs."



HAS BUILT A REPUTATION



United Expressline
8x16 Cargo

Moritz
CBS 616

EBY Aluminum
7x20 Gooseneck

NEW & USED: STOCK - HORSE - CARGO - INDUSTRIAL - UTILITY - CAR HAULERS

Trailer Enterprises is here to serve you. We are a full service facility providing YOU with the very best service available in the industry!

TRAILER ENTERPRISES, INC.

13121 MAUGANSVILLE ROAD
HAGERSTOWN, MD 21740

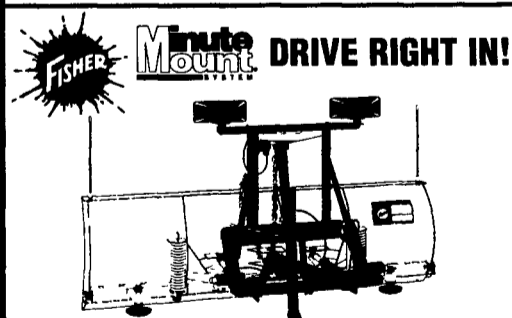
Just give us a call at (301) 791-5343.

Hours: 8AM-5PM Monday-Friday
9AM-12 Noon - Saturday

DON'T WAIT - BE PREPARED!

See Binkley & Hurst Bros. Inc.

Your Source For Quality Snow Plows From Home Owner To Heavy Duty Truck Mount Plows



NOT ALL DETACHABLE PLOWS ARE CREATED EQUAL!

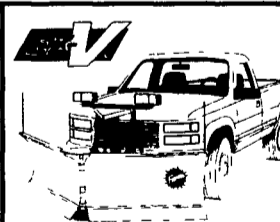
- Drive-in attachments eliminate struggling with a heavy blade and attachments
- Vertical Jack Stand guarantees proper height alignment
- Two permanently mounted connecting pins means there's no chance of dropping them in the snow or losing them during storage
- One Piece detachable (not two) means faster on and off

The Key To Easy Operation Is In Your Hand.

See Binkley & Hurst Bros. Today! Ask For Dean



This new state of the art, electronic control can be used with either the Solenoid EHP or the EC/SV Hydraulic System • "CB" style mounting clip provided • Unplus for glovebox storage • Automatic shut-off if not in use and automatic float in "down" position



THREE PLOWS IN ONE!

Break through deep drifts in the "V" position or carry and stack in the "scoop" mode or use this 8-1/2' plow in the straight or angled position for conventional plowing

All blade functions are right in the palm of your hand with the hand-held FISH-STIK® control The minute Mount System® for easy on/off, trip-edge blade and double acting cylinders, all make the EZ-V plow the ultimate plow for the professional plower

WE MOUNT V-PLOWS ON SKID LOADERS



FISHER SNOW PLOWS IN STOCK
Ideal For Plowing Long Driveways with Your 4-Wheel Dr. Skidloader

BINKLEY & HURST BROS. INC.

133 Rothsville Station Rd.
P.O. Box 0395
Lititz, PA 17543-0395

(717) 626-4705
1-800-414-4705

Fax 717-626-0996
www.binkleyhurst.com

