

GOOD YEAR THE RIGHT TIRES FOR THE WAY YOU FARM

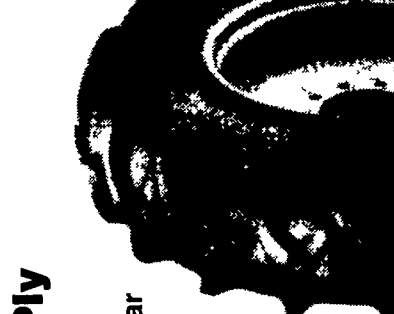
ULTRATORQUE RADIAL



Cuts Through Mud, Dirt,
And All Kinds Of Soil
\$589.00
3806R28 TL
Replace 149R28
No Trade Needed
Other Sizes Available

- Open center mud-channel for cleanability
- Centerline riding pads for smooth roading and excellent wear
- Conventional long bar design offers premium traction

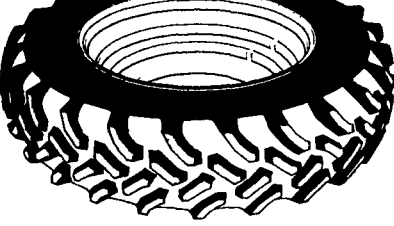
DURATORQUE



Economy Bias-Ply
\$194.00
Priced With Long/Long Bar
13.6x28 Tubeless
6 Ply TT

- Excellent roadability provided by over lapping lugs in the center
- Traction in a wide range of sizes due to the long bar design
- Long wear and durability from the braced lug design
- Easy lug cleanability

DT710 RADIAL



As Smooth On The Road
As It is Powerful In The
Field
\$499.00
184R38*
No Trade Needed
Other Sizes Available

- New interlocking center lugs deliver important cushioning surface area that smoothes out the ride on pavement
- 60% increase in biting tread edges lets you work faster in all kinds of soil - wet or dry

IT510 RADIAL



175 LR 24 8 Ply
\$549.00
Other Sizes Available

- Maximum traction supplied by additional biting edges from the overlapping lug/block pattern
- Flotation and traction provided by a larger contact patch

FARM UTILITY



Outstanding flotation
Easy steering from the heavy
grooved ribs
11L15 8 Ply TT
\$46.95
Other Sizes Available

- Rib Implement Tire-Easy Operation For Many Types of Equipment

TRIPLE RIB HD



Improved steering in loose, cultivated soil provided by the deep, wide center ribs
3 rib design provides excellent steering capabilities
550-16
4 Ply TT
\$43.95
Other Sizes Available

LABORER

Heavy Duty Industrial Tractor Front
Wheels 11L-15 8 Ply

\$89.95

OTHER SIZES AVAILABLE

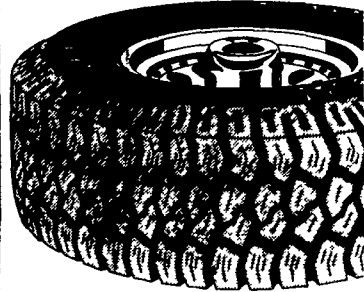


INDUSTRIAL TIRES



175L-24 - 8 Ply
\$269.00
Other Sizes Available

Workhorse XG Radial



Other Sizes Available

Economy All-Weather Radial For Light Trucks Heavy Duty On/Off Road

LT 235/75R15
Load Range "C"
\$99.00

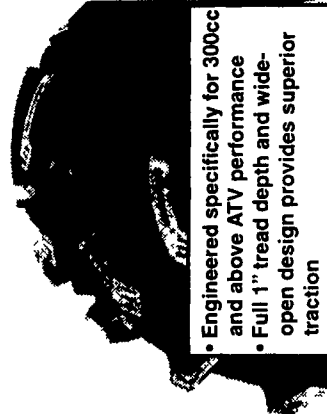
SURE GRIP LUG



6 Ply
10-16.5
Other Sizes Available
\$99.00

TRACKER MUD RUNNER

Our Most Aggressive
ATV Mud Tire



- Engineered specifically for 300cc and above ATV performance
- Full 1" tread depth and wide-open design provides superior traction

Zimmerman Farm
Service
School Rd
Bethel, PA
717-933-4114

BHM Farm
Equipment
RD 1 Rt. 934 North
Annyville PA
717-867-2211

Horlacher &
Sherwood
153 E. Trioga
Tunkhannock, PA
570-836-1116

Bastian Tire Sales
Rt 11 & 15
Shamokin Dam PA
1-800-326-9465

Neatons Tire
25 East Ave
Easton, MD
1-800-317-6152

Dices Tire Shop
1421 Lincoln Way
Chambersburg PA
717-264-9312

Service Tire Truck
Centers, Inc.
1601 Manheim Pike
Lancaster, PA 17604
717-569-8473

Service Tire Truck
Centers, Inc.
3403 Concord Road (PIE Building)
York PA 17402
717-755-8473

Bastian, Tire Sales
R2603 Reach Road
Williamsport, PA 17701
1-800-362-5279

Service Tire Truck
Centers, Inc
5082 East Landis Avenue
Vimeland NJ
856-692-9393

Donald B. Rice
Tire Co.
1420 Tilco Drive
Frederick, MD 21701
1-800-407-0556

Lebanon Valley
Imp. Co.
700 E Linden St
Richland, PA
717-866-7518

**TWO REASONS
YOU CAN COUNT
ON GOODYEAR**

**Goodyear's New
Agricultural Warranties**
See Your Local Goodyear For Full Details.



CALL 1-800-FARMTIRE. GOOD YEAR As American As Farming.

Check our Web Site @ www.Goodyear.com - Click on tires - Click on North America tire - Click on Farm & Industrial