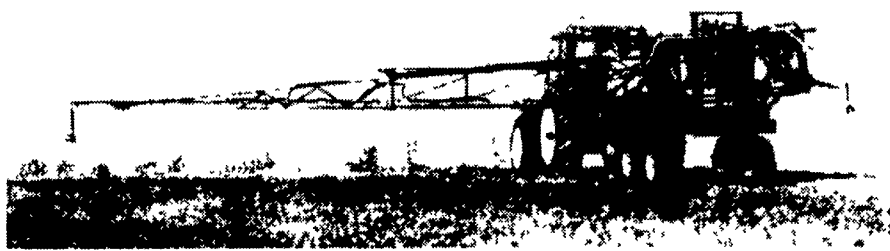


Sprayers loaded with features, and early order discounts.



A complete model line-up, built with high value features to help you cover more acres...accurately...efficiently.

- 500, 750 & 1,000 gallon models
- Single, tandem & Big Wheel axles
- Manual or optional hydraulic fold booms
 - Individual forward fold allows operation with one wing extended only
 - Individual wing tilt enables moves above or below center
- 28% liquid nitrogen compatible
- Double constant velocity pto drive line for smooth pump operation
- Hydraulic drive optional

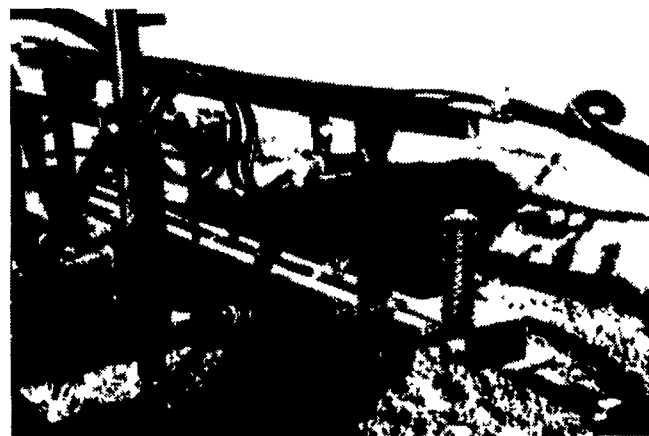
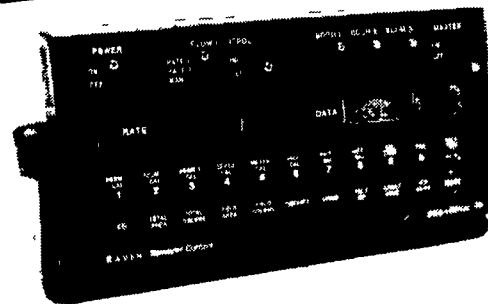
MILLER PRO



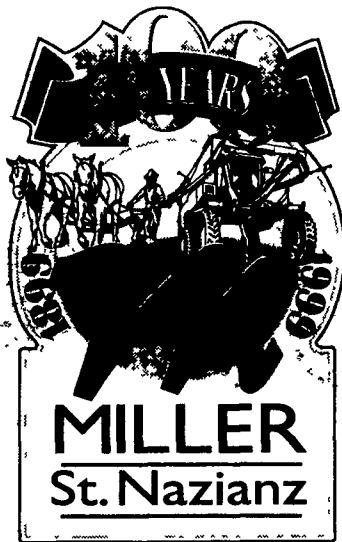
Equipped with TeeJet tips and nozzle bodies

- **Large ball valves** for more durability, longer life and more capacity
- **High capacity boom feed lines** are 1" I.D.
- **Weather Pack connectors** seal connections for longer life
- **3 agitation jets in tank** provide superior agitation when self-cleaning filter is used

Raven™ Spray Controller for application accuracy — GPS compatible

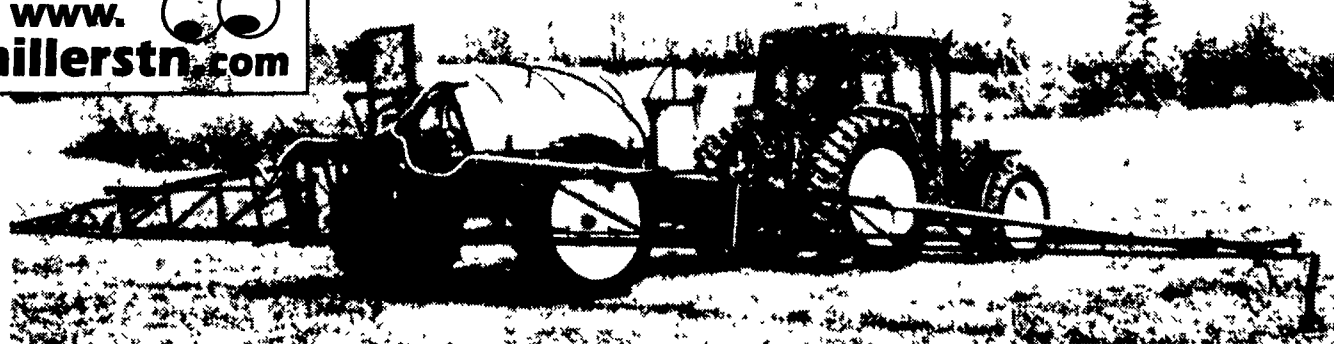


Patented Field Cushion™ suspension system (manual fold boom shown)



WANT TO SEE MORE?

www.millerstn.com



(800) 247-5557