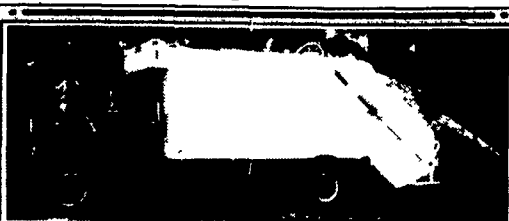




**1987 Ford L9000 10 Ft. Dump**, Cummins Diesel, 240 HP, 7 Spd Trans, GVW 36,200, 123,000 Miles, Central Hydraulics, Snow Plow Ready  
**Call (814) 942-0600 or (814) 942-9753**



**1987 FORD NL8000**  
 3208 Cat, 5x2, 20 yd. loader master  
**\$15,000**  
**Call: 410-592-5242**

88 Mack MS250, air brakes, will take 22' bed, good condition.  
 570/467-3763.

93 Dodge PU 3/4 Ton 4x4 Cummins Turbo \$11,900  
 Leave Message  
 717-548-2834

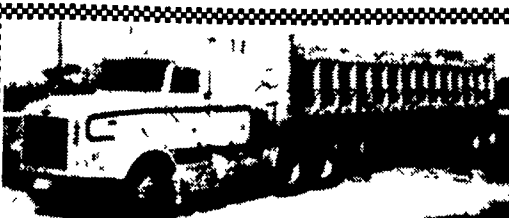
93 Dodge Ram, 318 Magnum engine, 2WD, green, 100,000 mi., very clean, \$3750. 610/489-3827.



**Dump Box**  
 8 Ft. x 16 Ft. x 5 Ft. High, 2 Way Tailgate,  
 Extra Nice **\$4,000**  
**570-683-5411**

**1947 Chev. Stake Bed Truck**

13,000 GVW  
 69,000 Original Miles. Excellent. Always Garaged  
**610/593-2407**  
 (Ext 10)  
 Fax  
**610/593-2482**



1988 357 Peterbilt, 13 speed, 4:11 rears, 350 Cat eng. (fresh overhauled), new radiator core, new clutch, new front tires, back tires are 50% to 80%, Wetline, air ride, 36" bunk, w/1997 East all aluminum frameless trailer, 2 way gate, coal chute, empty gvw 30,000, air ride truck & trailer combination. Will consider separation.  
**\$55,000 OBO**  
**410/556-6642** (Call after 6 PM)

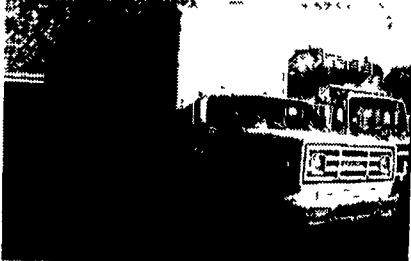


**YORK MACK YORK GMC TRUCK**

55 S. FAYETTE ST.  
 YORK, PA 17404-0833  
**(717) 792-2636 - 800-930-2636**  
 JOHN BRANT



**85 Mack R Model**  
 300 HP, 9 Speed, 30,000 Miles on Engine

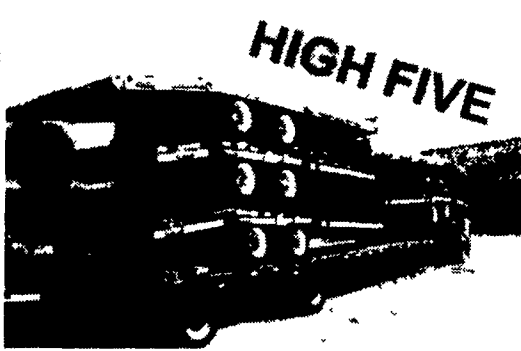


**86 GMC C6**  
 22' Van Body, 366 HP Gas, 5 Speed, Non CDL **\$4,950**



**88 Mack MS 300P**  
 20' Reefer, 210 HP Eng., 6 Speed, Side Doors

**Binkley & Hurst Bros. Offers....**  
**Eager Beaver. HIGH FIVE TRUCK LOAD SALE ON NEW 20-TON HIGH TENSILE TRAILERS**



**Don't Miss This One!**

**Make Your Move To Quality Eager Beaver From Binkley & Hurst In January And SAVE!**

**BINKLEY-HURST BROS. INC.**

133 Rothsville Station Rd.  
 P.O. Box 0395  
 Lititz, PA 17543-0395

(717) 626-4705 1-800-414-4705

Fax 717-626-0996

www.binkleyhurst.com



**USED VEHICLES FOR SALE**

- 1993 CHEV. SUBURBAN 1500 4x4, AT, 106k miles..... **\$13,500**
- 1995 JEEP CHEROKEE 4x4, AT, 4 Door, V6, 84k miles..... **\$8,950**
- 1990 DODGE RAM 250 4x4, AT, Cummins Diesel, 150k miles..... **\$9,850**
- 1995 CHEV. K2500 EXTEND CAB 4x4, AT, 69k miles..... **\$17,500**
- 1994 DODGE RAM 2500 4x4, Diesel, AT, AC, 100k miles, Green & Silver..... **\$15,500**
- 1994 DODGE RAM 2500, Diesel, AT, A/C, 2WD, Most Options, 213k miles, Dk. Blue.. **\$10,400**
- 1997 FORD MAXIVAN, AT, 5.4L V8, 15 Passenger, 17k miles..... **\$19,500**

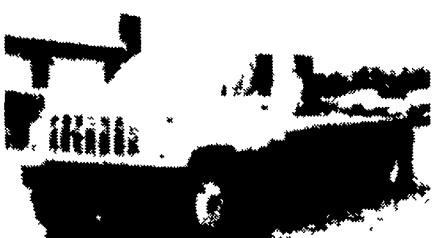
**SCHAEFFERSTOWN AUTO & TRUCK SALES**

Rt. 501, 1-1/2 miles South of Schaefferstown  
**717-949-2812**

**AL HAMILTON MANAGEMENT COMPANY**

P.O. Box 157 • 55 Doe Run Road • Manheim, PA 17545  
**Phone: 717-665-7145 • Fax 717-665-2137**

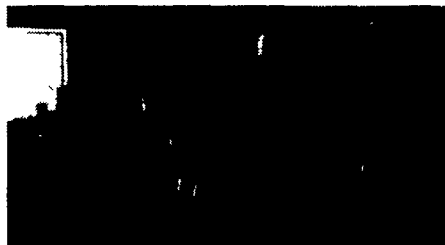
★★★ "CLEANEST TRUCKS AROUND" ★★★



**1992 GMC Topkick**  
 3116 Cat Diesel, 6 Spd. Trans., PS, Air Brakes, Lift Axle, 22' Flat Dump, 52,000 GVW, Low Miles - **\$28,500**



**1985 Ford F-700**  
 370 Gas, 5 Spd. Trans., 2 Spd. Rear, Hyd. Brakes, 21' Eby Cattle Body, Exc. Cond. **\$15,500**



**1984 Ford LN 8000**  
 3208 Cat (Rem Engine), 10 Spd. Trans., P.S., Air Brakes, 32,000 GVW, 16' New Grain Body, Exc. Cond - **\$21,500**



**1991 Ford LN9000**  
 w/New 10' Dump, L-10 Cummins, 9 Spd. Trans., 34,700 GVW **\$25,500**



**1994 Ford LNT9000**  
 L-10 Cummins, 280 HP, 10 Spd. Trans, PS, Air Brakes, A/C, Custom Int., 260 WB, 192 CA, 56,000 GVW - **\$38,500**



**1992 Ford LN8000**  
 C&C 7.8 L Diesel, 210 HP, 6 Spd. Trans., Custom Int., 234" WB, 168" CA, 33,000 GVW - **\$19,500**



**1993 Int. 4900 C&C**  
 DT-466, 6-Spd. Trans., 32,000 GVW, Custom Int., A/C, 186 C/A, 254 W.B., Exc Cond. **\$22,500**



**1994 Chevy Kodiak**  
 14' Van Body, 3116 Cat, 200 HP, 6 Spd. Trans., PS, A/C **\$14,500**



**1995 Ford LN8000**  
 8.3 Cummins, 210 Hp, 6 spd Trans, PS, Air Brakes, A/C, 35,000 GVW, New 11' Dump **\$35,500**



**1993 Chevy Kodiak C&C**  
 3116 Cat Diesel, 200 HP, 6 Spd. Trans, PS, A/C, 180 WB, 108 C.A. **\$13,500**



**'91 Int. 4900 C&C**  
 DT-466, 6-Spd. Trans, 32,000 GVW, Custom Int., A/C, 186 - C.A., 254 - W.B., Exc. Cond **\$19,500**



**1995 International 4700**  
 DT466, 190 HP, 25,500 GVW, 236 W B, 124 C A, Low Mileage, 6+1 Transmission, AC, Custom Cab, Mint Condition - **\$25,500**