

Champions Win Again At This Year's Beef Show

ANDY ANDREWS

Lancaster Farming Staff
HARRISBURG (Dauphin Co.)

— For one exhibitor, it was a repeat. For another, it was a "threepeat" — winning the open beef show contest at the Farm Show three years in a row.

The second time was nothing but sweet for Carl Detwiler, Roaring Spring, who exhibited an early senior heifer calf, Bolsens Golden Sapphire (S: Fernvale Eurloch, D: Bolsens Cattleman 9151), to supreme champion heifer.

"It's the most exciting thing," Detwiler said. "I can't describe how exciting this is."

Detwiler attributes a lot of hard work, "a lot of time, and a lot of hours," he said, to winning a supreme champion. He also said genetics and "luck" go into it.

The year-old calf, at 1,400 pounds, was purchased from Bolsen's Angus Farm, Lovington, Ill.

Detwiler is a freshman studying agriculture business management at the Penn State Altoona Campus. He is the 19-year-old son of Allen and Joy Detwiler, Roaring Springs.

For supreme champion bull, it

was a "threepeat" for Mount Joy exhibitor C.J. Furlong, who exhibited the grand champion Hereford bull at the show, he said, three years straight.

Furlong's champion was the early junior yearling bull, Dunwalke Cash 72F (S: NTW Charlie Russell 72F, D: Dunwalke Cameo F37).

C.J. Furlong once worked as herd manager for Salunga Acres, Mount Joy. Now he works for his own company, C.J. Cattle Company, Mount Joy. (Last year Salunga Acres ceased operation and disbursed the herd after the death of its founder.) Furlong noted the bull is used on three operations — Durham Farms, Riegelsville; Storm Valley Acres Farms, Frenchtown, N.J.; and Dunwalke Farms, Far Hills, N.J.

Claudia Macik of Durham Farms spoke about the partnership over the bull. The bull is used for natural service and for AI. As a young calf, noted Bob Macik, the bull was worth at least \$5,000 — now, the value of the bull continues to rise.

Other division winners were announced.

In the Angus division, reserve



C. J. Furlong, at halter, showing for Storm Acres, Durham, a consortium owning this Hereford bull, picked up supreme champion bull honors at this year's Farm Show. From left, Furlong, at halter; April Daley; Fran Daley; Sam Hayes Jr., state secretary of agriculture; Bob Macik; and Claudia Macik. Photo by Andy Andrews

champion heifer went to the early summer heifer calf, Weaverland Erica Cassidy (S: Gdar Executive 727, D: KJC Ericas Jillian), exhibited by Heather Fuls, Richland.

Grand champion Angus bull was the April junior yearling bull, Cedar Hill Ct Keystone (S: JDH Keystone Ext, D: Koolspring Barbara 438), exhibited by Cory R. Thompson, Wellsville. Reserve was the junior bull calf, LVA Saughatchee Sonic 901 (S: Leachman Saughatchee 3000, D: Twin Oaks Regina 2177), exhibited by Kimberly A. Long, Airville.

In the Charolais division, grand champion heifer was the late spring heifer calf, BCF Nellie 212B-P (S: BCF New Trend 992P, D: BCF High Lady 802P), exhibited by Raymond A. Bratton, McVeytown. Reserve Charolais heifer was also shown by Bratton.

Grand champion Charolais bull was exhibited by Cliff and Lynn Orley, Lebanon, with their senior bull calf, SMR Heyday 718 Polled (S: Baldrige Fast Track, D: GF/WW Dot 5071). Bratton of McVeytown showed reserve Charolais bull.

In the Hereford division, grand champion heifer was shown by HJF Cattle Company, Midland, HJF Cheyenne (S: HJF Slick 4D, D: HJF Rockie Ruby 2E), a late spring heifer calf. Reserve went to Maple Springs Farm, Mount Joy, for the junior heifer calf, MSF 698 Vesty 9903 (S: RB Victor Dom F242 698, D: Salunga MS Vester 55D).

Grand champion Hereford bull was the supreme overall champion, Dunwalke Cash 72F, shown by Storm Acres, Durham. Reserve bull was the late spring bull calf, MSF 30F Frontier 9915 (S: Salunga 751W Vic 30F, D: MSF Lady Bond 9301), shown by Maple Springs Farm, Mount Joy.

In the Simmental division, grand champion heifer went to the late junior yearling heifer, STF I'm The One (S: LRS Preferred Stock,

D: r&j Promise), exhibited by Cassandra Schaeffer, Myerstown. Reserve heifer went to the spring heifer calf, WF Vicki, shown by Jerry and Ginger Woolcock, Orangeville.

The Simmental champion bull went to Maple Cove Breeders, Bedford, for the late junior yearling bull, Shoemaker's Top Gun (S: Burns Bull X339U, D: Shoemaker's Miss Pride). Reserve bull went to the summer yearling bull, LLL BLK Hunk (S: LLL BLK Chunk, D: Deer Button), exhibited by Larry Hughes, New Oxford.

In the Limousin show, one exhibitor swept the classes. Grand champion heifer was awarded to the late junior yearling heifer, Quail Run Stacey (S: Orion, D: Exlr Stevie 311B), exhibited by Ed Nicol of Maple Lane Farms, Enon Valley. Reserve went to the heifer in the same class, Nico Fuzzy Navel (S: Cole First Down 46D, Nico Polled Porsha), also exhibited by Nicol.

Grand champion Limousin bull went to Nicol for his early spring bull calf, Nico Polled Bia Time (S:

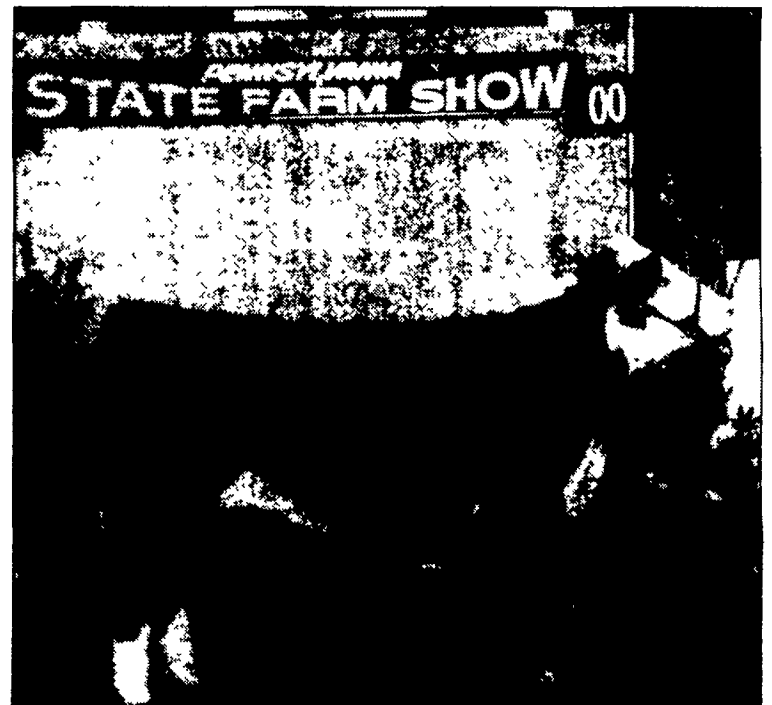
(Turn to Page D4)



Maine-Anjou grand champion bull was shown by Mikesell and Mid-State Maines, Port Royal, the first time the Maine-Anjous were part of the supreme champion drive at the Farm Show.



Supreme champion heifer at this year's Farm Show was the Angus early senior heifer calf, Bolsens Golden Sapphire, shown by Carl Detwiler, Roaring Spring, left. This was Carl's second year in a row as champion at the Farm Show open beef show. At right, with banner, is Sam Hayes Jr., state secretary of agriculture. Photo by Andy Andrews.



Polled Hereford grand champion heifer was shown by John Vidovich of HJF Cattle Company, Midland.