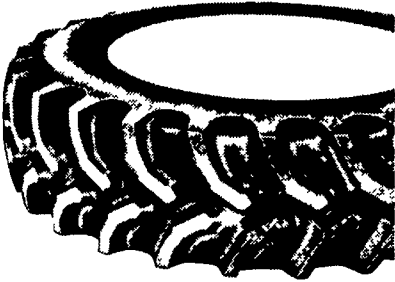


GOOD YEAR THE RIGHT TIRES FOR THE WAY YOU FARM

ULTRATORQUE RADIAL



Cuts Through Mud, Dirt,
And All Kinds Of Soil

\$589.00

380/65R28 TL
Replace 149R28
No Trade Needed
Other Sizes Available

- Open center mud-channel for cleanliness
- Centerline riding pads for smooth riding and excellent wear
- Conventional long bar design offers premium traction

DURATORQUE

Economy Bias-Ply

\$194.00

Priced With Long/ Long Bar
13.6x28 Tubeless
6 Ply TT

- Other Sizes Available (Mounting Available)
- Excellent roadability provided by overlapping lugs in the center
- Traction in a wide range of sizes due to the long bar design
- Long wear and durability
- Easy lug cleanability



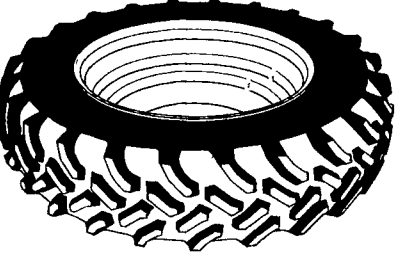
DT710 RADIAL

As Smooth On The Road
As It Is Powerful In The
Field

\$499.00

184R38*
No trade needed
Other Sizes Available

- New interlocking center lugs deliver important cushioning surface area that smooths out the ride on pavement
- 60% increase in biting tread edges lets you work faster in all kinds of soil - wet or dry



IT510 RADIAL

175 LR 24 8 Ply

\$549.00

Other Sizes Available

- Maximum traction supplied by additional biting edges from the overlapping lug/block pattern
- Flotation and traction provided by a larger contact patch



FARM UTILITY

- Outstanding flotation
- Easy steering from the heavy grooved ribs

11L15 8 Ply TT
\$46.95

Other Sizes Available

Rib Implement
Tire- Easy
Operation
For Many
Types of
Equipment



TRIPLE RIB HD



- Improved steering in loose, cultivated soil provided by the deep, wide center ribs
- 3 rib design provides excellent steering capabilities

550-16
4 Ply TT
\$43.95

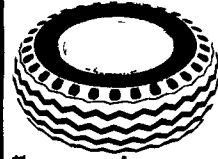
Other Sizes Available

LABORER

Heavy Duty Industrial Tractor Front
Wheels 11L-15 8 Ply

\$89.95

OTHER SIZES AVAILABLE



INDUSTRIAL TIRES

175L-24 - 8 Ply

\$269.00

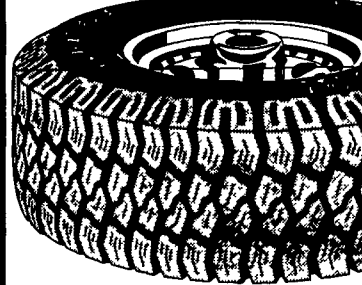
Other Sizes Available



Workhorse XG Radial

Other
Sizes
Available

Economy
All-Weather
Radial For
Light Trucks
Heavy Duty
On/Off Road



LT 235/75R15
Load Range "C"
\$99.00

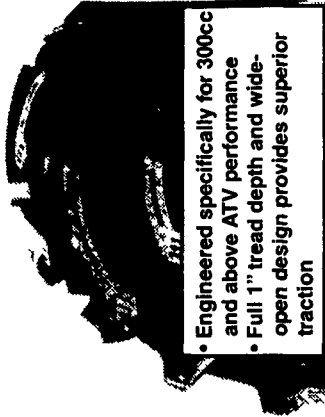
SURE GRIP LUG



6 Ply
10-16.5
Other Sizes Available
\$99.00

TRACKER MUD RUNNER

Our Most Aggressive
ATV Mud Tire



- Engineered specifically for 300cc and above ATV performance
- Full 1" tread depth and wide-open design provides superior traction

Service Tire Truck

Centers, Inc.
1601 Manheim Pike
Lancaster, PA 17604
717-569-8473

Zimmerman Farm

Service
School Rd
Bethel, PA
717-933-4114

BHM Farm

Equipment
RD 1 Rt 934 North
Annville, PA
717-867-2211

Service Tire Truck

Centers, Inc.
3403 Concord Road (PIE Building)
York, PA 17402
717-755-8473

Horlacher &

Sherwood
153 E Tioga
Tunkhannock, PA
570-836-1116

Bastian Tire Sales

R2603 Reach Road
Williamsport, PA 17701
1-800-362-5279

Bastian Tire Sales

Rt. 11 & 15
Shamokin Dam, PA
1-800-326-9465

Service Tire Truck

Centers, Inc.
5082 East Landis Avenue
Vineland, NJ
856-692-9393

Neatons Tire

25 East Ave
Easton, MD
1-800-317-6152

Donald B. Rice

Tire Co.
1420 Tilco Drive
Frederick, MD 21701
1-800-407-0556

Lebanon Valley

Imp. Co.
700 E. Linden St
Richland, PA
717-866-7518

Dices Tire Shop

1421 Lincoln Way
Chambersburg, PA
717-264-9312

**TWO REASONS
YOU CAN COUNT
ON GOODYEAR**

**Goodyear's New
Agricultural Warranties**
See Your Local Goodyear For Full Details.



CALL 1-800-FARMTIRE. GOOD YEAR As American As Farming.

Check our Web Site @ www.Goodyear.com Click on tires--
Click on North America tire--Click on Farm & Industrial