

STONE & PARRISH

Montrose, PA
570/278-1910

TRACTORS

| | |
|--|----------|
| JD 4520 3 pt. fenders STD shift. | \$7,500 |
| JD 720 Diesel NF no 3 pt | \$4,000 |
| JD 430 Crawler Dozer 62 blade. | \$5,000 |
| IH 966 3 pt fenders, needs clutch .. | \$5,500 |
| Farmall 450 Diesel 2 pt narrow front, power steer | \$4,000 |
| Farmall 300 Row Crop NF 2 pt Loader | \$2,800 |
| Farmall Super C Wide Front | \$1,700 |
| NH 565 Skidsteer Bucket & Forks .. | \$11,500 |
| Gehl 2500 Skidsteer, Gas | \$3,500 |

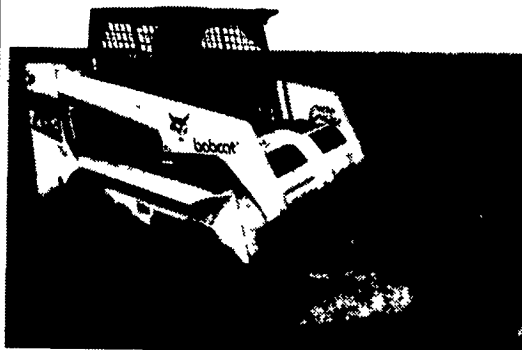
MISCELLANEOUS PARTS

| | |
|---------------------------------------|-------------|
| JD 3020 Hood NOS .. | \$800 |
| JD 2020 Hood NOS .. | \$800 |
| JD Round Wide Front 50 thru 730 .. | \$1,000 |
| JD Round Wide Front Early Styled "A" | \$1,000 |
| JD Front Weights 2010 thru 4520 .. | \$300-\$400 |
| JD Belt Pulley for 3010 & 4020 NOS .. | \$350 |
| IH Flat Top Fenders .. | \$350 |

PARTING OUT

JD 3020 Power Shift A, B, H, G, MT, MC 40, 50, 60, 70, 520, 720, 730, 40C, LUC & 24T
Farmall A, B, C H., M, W4, TD6, Cub, 340, 300, 400, 350, 504, 460, 450, 656 Hydro, F12
Case VAC 630, 300D, DC
AC WD, B, C
Ford 8N, 9N, 600, 800, 900, Major Diesel
David Brown 990, 1200
MF Pony, 180
Oliver 70 & 77

763 Improves Productivity



MAJOR FEATURES OF 763:

- Long Wheelbase, Smooth Ride
- Powerful 46-hp Diesel Engine
- Additional Lift Height
- 1500-lb. Rated Operating Capacity
- 7 mph Travel Speed

SKID STEERS AVAILABLE

- | | |
|------------------|------------------------------|
| • 743 Bobcat | • L553 New Holland, like new |
| • 763 Bobcat | • L255 New Holland |
| • 773 Bobcat | • L455 New Holland |
| • 440 Mustang | • 1825 Case |
| • 675 John Deere | • 1835 Case |

GRUMELLI FARM SERVICE, INC.

See Salesmen: Quarryville, Pa.
Don Fichtner
Tony Grumelli 717-786-7318



QUALITY HAY EQUIPMENT

One of Pa's Largest Selections

BALERS

| | |
|---|---------------|
| ★ RBP Rebuilt Plunger (new pin bushings rollers slide blocks) | \$7,000 |
| JD 328, 40 ejector, elec controls, RBP | \$6,000 |
| JD 327, 30 ejector, 1 owner, RBP | \$5,500 |
| JD 336, 30 ejector, field ready RBP | \$3,000 |
| JD 24T, chute, field ready | \$1,250 |
| JD 214T, chute, field ready | \$1,250 |
| JD 346, 30 ejector | (2) Coming In |
| JD 336, 30 ejector | (3) Coming In |
| JD 30 ejector, complete | \$500 |
| JD 14T, 24T and 336 parts balers | CALL |
| NH 316 Baler, super sweep, 75 Ejector, sharp | \$8,000 |
| NH 315 w/70 thrower super nice | \$5,000 |
| NH 276 baler, chute, field ready | \$2,500 |
| NH 276 baler, super sweep, 54 thrower | \$3,200 |
| NH 276 Baler, super sweep, 54 thrower | \$3,000 |
| NH 276 baler, super sweep 54 thrower | \$2,800 |
| NH 276 baler, super sweep, 54 thrower | \$2,800 |
| NH 320 baler, super sweep, 75 thrower | Coming In |
| NH 120 baler, super sweep, 70 thrower | Coming In |
| NH 282, super sweep, hyd tension, hi cap | \$1,800 |
| NH 275 Baler, super sweep chute, clean | \$1,800 |
| NH 75 Pan Thrower, complete, off of 315 | \$600 |
| NH Hydraulic tension unit off of 320 | \$400 |
| NH 68, 69, super 69 parts balers | CALL |
| Case 330, AC 444, IH 46, IH 47 parts balers | CALL |

ROUND BALERS

| | |
|---|---------|
| NH 630, 4'x4' bales, like new, new belts | \$8,000 |
| NI 484, 5'x4' bales, clean rust fr Wisc baler | \$6,000 |

DISCINES

| | |
|--|-----------|
| JD 1470 11' comp rebuilt, new rolls, new cutterbar | \$9,000 |
| JD 1460 9' ex rolls, sharp paint, our own | \$7,500 |
| Vicon KM321, 9' very good rolls, ex cond | \$4,750 |
| Vicon KM321, 9' good rolls, v g cond | \$4,200 |
| Kuhn FC300G, 8', 540 or 1000 RPM | \$5,000 |
| Deutz Allis RM80 Discbine | Coming In |

HAYBINES

| | |
|--------------------------------------|---------|
| JD 1209 9 excellent rolls, v g cond | \$2,500 |
| JD 1219, 9 mechanics special | CALL |
| NH 467 7 excellent rolls, good paint | \$2,000 |
| NH 469, 9 good rolls | \$1,250 |

| | |
|---|---------|
| NH 479, 9', excellent rolls, field ready | \$1,800 |
| IH 1190, 9', good rolls | \$1,500 |
| IH 1190, 9' Good rolls | \$1,500 |
| IH 1490, 12' hydroswing, good rolls | \$2,500 |
| Hesston 1010, 9' hydroswing | \$1,500 |
| IH 990, JD 1209, Ford 550, NH 479, Haybines for Parts | CALL |

RAKES & TEDDERS

| | |
|---|---------|
| JD 660 rake, dolly wheel, nice | \$1,500 |
| NH 256 rake, exc mechanical, fair paint | \$1,500 |
| NH 56 rake, needs minor work | CALL |
| NH 55 rake, good mechanical, poor paint | \$800 |
| Pequea 710 tedder, PTO, good cond | \$1,000 |
| Pequea rake inverter, near new cond | \$2,500 |
| Farmhand, 4 wheel rake, good cond | \$500 |
| Several other rakes | CALL |

MOWERS

| | |
|---|---------|
| Woods HD 315, 15 Batwing V G condition | \$5,000 |
| Woods MD 184, 7 rotary, 3 ph like new | \$2,000 |
| NH 451 sickle bar 9 bar no wds v g cond | \$1,500 |
| Heavy duty 6 rotary mower, 3 PH stump jpr | \$750 |

TRACTORS

| | |
|---|----------|
| JD 4020, WFE, dual hyd, cab, super nice | \$12,000 |
| JD 4230, WFE, dual hyd, cab | \$11,000 |
| JD 4020 WFE, dual hyd, excel cond | \$9,000 |
| JD 4020 Turbo WFE dual Hyd | \$9,000 |
| JD 3010 TFE gas roll bar, very nice | \$5,000 |
| IH 656 WFE, diesel 3ph sharp | \$6,000 |
| Farmall Super MTA, rSOLD | \$3,500 |
| Farmall Super C w/McCormick loader | \$2,000 |
| Farmall MD NFE Runs Excel | \$3,000 |
| Farmall H 1941 Spoke Wheels, Exc | \$1,800 |
| Farmall H Rem Hyd Dual Fuel Exc | \$1,600 |
| Farmall Cub 1948 sickle bar mower | \$1,900 |
| Farmall A WFE, good paint runs ex | \$1,800 |
| International Cub, belly mower, runs ex | \$2,700 |
| Farmall H, 1944, excellent rear rubber | \$1,400 |
| Farmall Cub, runs excellent | \$1,800 |

MISCELLANEOUS

| | |
|---|---------|
| Farmco 18 steel side throw w/gns 8 ton new | \$2,000 |
| Farmco 8' horse feeder, new | \$350 |
| Sunflower 12' folding offset disc | \$3,000 |
| JD 8300 grain drill, 18x7, grass box exc | \$3,000 |
| JD 7000 6RN no till dry fert & insect | \$5,500 |
| Kinze hyd markers exc condition | \$5,500 |
| Brillion 9 cultipacker rebuilt new shaft & bearings | \$600 |

717-235-1766

Financing Available

3 Miles north of Shewsbury Pa on White Oak Road
Open Saturdays & Sundays 8 a.m.-2 p.m.
Weekdays 8 a.m. - Noon or By Appointment

Call for Directions



GUNTHER HEUSSMAN INC.

4801 S. 5TH ST., EMMAUS, PA 18049 610-965-5203



WE ARE CASH BUYERS FOR CLEAN, LATE MODEL FARM EQUIPMENT

QUALITY TRACTORS

(Displayed In Heated Building)

1999 JD 7410 Cab, Air, MFD, PTO, **SOLD** w/Creeper, Triple Hydraulics, 18x38 Rack & Pinion, 350 Hrs, Like New
1990 JD 4955, Cab, Air, Power Shift, MFD, 4000 Hrs., Triple Remotes, 18x42 Duals
1988 JD 4850, Cab, Air, Power Shift, MFD, Triple Hydraulics, 20x38 Duals, 3600 Hrs., Excel. Cond.
JD 4650 Cab, Air, 15 Speed Power Shift, MFD, 3000 1-Owner Hrs., Excel. Cond.
1991 JD 4455 Cab, Air, Power Shift, MFD, Triple Remotes, 5400 Hrs., Good Cond.
JD 4050 Cab, Air, 15 Spd., Power Shift, 4x4, 2900 Hrs., V. Nice
1980 JD 4440 Cab, Air, Quad, Triple Remotes, 5000 Hrs., Good Cond.
JD 4240 Cab, Air, Quad, 3800 Hrs, Good Cond.
1977 JD 4230 Cab, Air, Quad, Triple Remotes, New Engine, Good Cond.
JD 4040 Cab, Air, Power Shift, Good Cond.
JD 2955 Cab, Air, MFD, Hi-Lo, 18x38 Rack & Pinion, 2400 Hrs., Excel. Cond.
JD 2955 MFD Hi-Lo, Dual Hyd., w/Hinker Cab, Very Nice
JD 2950 Cab, Air, Hi-Lo, Dual Hyd., 3200 Hrs., Excel. Cond.
JD 2755 Cab, Air, Dual Hyd., Rack & Pinion, 3800 Hrs., Good Cond.
JD 2750 Cab, Air, Dual Hydraulic, Rack & Pinion, 540 & 1000 PTO, Very Nice
JD 2350 Cab, Air, Hi-Lo, 3400 Hrs, Very Nice
JD 2350 Diesel, Open Station w/146 Loader, Very Nice
1997 JD 5300 4x4 w/Reverser, Triple Hydraulics, 540 Loader, 200 1-Owner Hrs., Like New
JD 2355 Open Station, 4x4, Hi-Lo, 1900 Hrs w/245 Loader, Excel. Cond.
1970 JD 4020 Diesel, Side Console, Tricycle, Syncro Range, Dual Hydr., Low Hrs., V. Nice
JD 3020 Diesel, Side Console, WF, Syncro Range, Good Cond
1980 IH 1086, Cab, Air, 2800 Hrs., Excel Cond.
IH 1486 Cab, Air, 3800 Hrs., Dual PTO, Recent Engine & T/A Repair, Excel Cond
IH 1486 Red Power, Cab, Air, Dual PTO, Good Cond
IH 1086 Red Power, Cab, Air, Good Cond
IH 986 Cab, Air, New T/A, Good Cond.
IH 1066 Fender, Dual Hyd, Dual PTO, Good Cond
IH 460 Gas, Tricycle **SOLD** Hitch, 2900 1-Owner Hrs.
Ford 3550 Diesel Loader, **SOLD** Fans, Good Cond.

HIGH QUALITY CORN AND GRAIN HEADS

| | |
|---|--|
| JD 922 Flex Head w/Fore & Aft, Late Model | JD 643 6RN, Oil Bath |
| JD 915 Flex Head, Fore & Aft, Speed Control | JD 444 4RW Oil Bath |
| JD 913 Flex Head | JD 444 4RW, Hi Tin |
| JD 215 Flex Heads | JD 443 4RN, Oil Bath |
| JD 213 Flex Heads | JD 443 4RN, Hi Tin |
| JD 216 Rigid Head | JD 343, 344, 243 |
| JD 13' Rigid Head | 1994 Case IH 1020, 15' Flex, Excellent |
| MF 9115 Flex Head | Case IH 1063, 6RN |
| MF 9111 SOLD head with HY Controls | Case IH 1043 4RN |
| MF 1859 13' Flex Head | IH 943, 4RN |
| JD 493 4RN, Like New | AC 438 4RW |
| | MF 1163 6RN |

QUALITY COMBINES

(Displayed Inside Building)

1992 JD 9500 Side Hill, Dial Speed, Fore & Aft, Chopper, Good Cond.
1992 JD 9400, 1000 Hrs, Chopper, 24x32 Tires, Excel. Cond.
1982 JD 6620, Cab, Air, Hydro, 2,100 Hrs., Excel. Cond.
JD 4420 Cab, Air, 23" Rubber, Chopper, Excel. Cond.
1984 MF 550 Cab, Air, Hy **SOLD** Chopper, 23" Rubber
1985 MF 850 Diesel, Cab, Air, Hydro, 1900 Hrs., Ex. Cond.

HAY EQUIPMENT

JD 3950 Harvester, Elec. Controls, Long Tongue, Very Good
NH 1063 Pull Type Bale Wagon, 160 Bale Capacity, Very Nice
NH 1037 Bale Wagon, 105 Bale Capacity, Excel. Cond.
NH 1033 Stack Wagon, 105 Bale Capacity, Good Cond.
JD 435 Round Baler, Net Wrap, Bale Trac, Tucker Wheels, Excel. Cond.
Ford NH 790 Harvester, **SOLD** Controls, w/Ford NH 824
JD 3RN Yellow Forage Head - 2 To Choose From
NH 477 7' Haybine
JD 243 2RN Snapper Head w/Chopper Plate, Excel. Cond.
Agco NI 4845 Round Baler, Excel. Cond.
JD 335 Round Baler, Excel. Cond.
Rhino 7' 3pt. Rotary Mower, Excel. Cond.
NH 848 Round Baler w/Bale Command, Good Cond.
JD 660 Rake w/Dolly Wheel **SOLD**
NH 847 Round Baler, Good Cond
Ford NH 256 Rake, Like New
Ford NH 853 Round Baler w/Fastnet, Bale Command, Good Cond.
JD 348T Baler w/Water Turn Chute
JD 327T Baler w/30 Ejector
JD 1360 Mo-Co Discbine, 9 1/2' Very Nice
JD 337 Baler, w/30 Ejector

MISCELLANEOUS EQUIPMENT

Ford NH 355 Grinder Mixer, Hyd. Drive w/Scales, Long Unloading Auger, Excel. Cond.
IH 1150 Grinder Mixer, w/Scales, Good Cond
Woods Heavy Duty Hyd. Angle, 3 Pt. Blade
Woods 90" Finishing Mower, Like New
Cab to Fit IH 1066, Good Cond.
Summers Hyd. Reel Rock Picker, Good Cond
JD 148-175-240-245 Loaders
Bush Hog 3425 Quick Attach Loader to Fit Case IH Maxxum, Like New
JD Bradco 8' Backhoe Attachment To Fit 1520 Thru 2555, Good Cond.
Crown Hyd. Reel Rock Picker, Good Cond.
Axle Mount 18x38 Duals For JD 4450, 4440, 4430, Case IH 5240, 1066, 1086, 986, 1486
Gehl 100 Grinder Mixer, Hyd. Drive, Good Cond
Leon Rock Picker, Good Cond.

PLANTING EQUIPMENT

JD 1750 4R Conservation Planter, Dry Fert, Frame Mounted Coulters, Insecticide Monitor, Like New

PLANTING EQUIPMENT, CONT.

JD 7200 4R Conservation, Dry Fert., Frame Mounted Coulters, Insecticide, Monitor, Excel Cond
JD 7200 4R Vacuum, Dry Fert, Insecticide, Monitor, Very Nice
JD 7000 6R Conserva **SOLD** Fert., Frame Mounted Coulters, Insecticide, Monitor, Good Cond
JD 7000 6R Conservation, Liquid Fert, No-Till Coulters, Insecticide, Monitor, Good Cond.
JD 7000 4R Dry Fert, **SOLD** Ide, Monitor, Good Cond
JD 7000 4RN, Dry Fert., Insecticide, No-Till Coulters, Very Nice
JD 8300 Grain Drill, 23x7, Grass Seed, Press Wheels, Good Cond
JD 7000 6R Dry Fert., Insecticide Monitor, Good Cond.
Case IH 5100 24x6 DD w/Fert. & Grass Seed & Press Wheels, Very Nice
JD 750 10' No-Till Drill w/Dolly Wheels, Excel. Cond
Liquid Fertilizer Attachment To Fit JD 7000 Corn Planters

TILLAGE

IH 720 6x18 Spring Reset on Land
IH 710 5 & 6x18 Spring Reset on Land
IH 710 4x16 Spring Reset Hillside Hitch
IH 720 5x18 Spring Reset Hillside Hitch
IH 720 4x18 Spring Rest Hillside Hitch
IH 710 5x18 Spring Reset
IH 710 3x18 Spring Reset
White 508 4x18 Spring Reset
IH 5500 3 pt. 12' Chisel Plow
Case IH 6500 9 Shank Conserve Till, Like New
Athens 10' Heavy Duty Offset Disc
Krause 18 1/2', Rock Flex Disc, Excel Cond
JD 950 10' Roller Harrow, Good Cond.
Krause 4900 21' Rock Flex Disc, Excel Cond
JD 1610, 11 Shank, 3 Pt. Chisel Plow
JD BWF 12' Rock Flex Disc
Dunham 23' Hyd Fold Transport Packer

CORN PICKERS

JD 300 Husker w/3RN Head, Late Model, 1 of a Kind
JD 300 Husker w/2 or 3 Row Head, Very Nice
NI 324 2RW, 12 Roll Bed, Late Model, Like New
NI 325 2RN, 8 Roll Bed, Good Cond.

