

GOODYEAR

#1 in Tires

PENNSYLVANIA



ULTRATORQUE RADIAL

Cuts Through Mud, Dirt,
And All Kinds Of Soil

\$589⁰⁰

380/85R28 TL
Replace 149R28
No Trade Needed
Other Sizes Available

- Open center mud-channel for cleanability
- Centerline riding pads for smooth roading and excellent wear
- Conventional long bar design offers premium traction



DURATORQUE

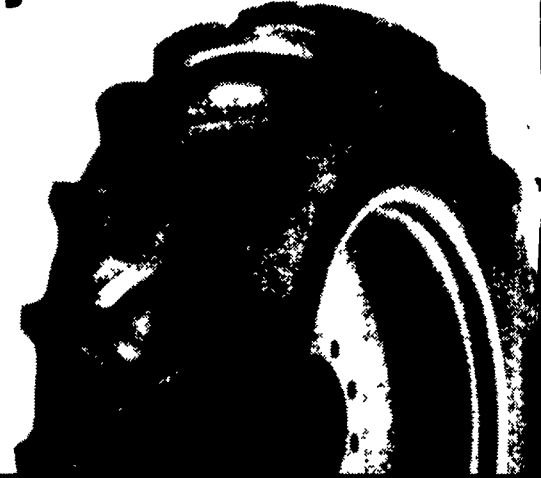
Economy Bias-Ply

\$194⁰⁰

Priced With Long/ Long Bar
13.6x28 Tubeless 6 Ply TT

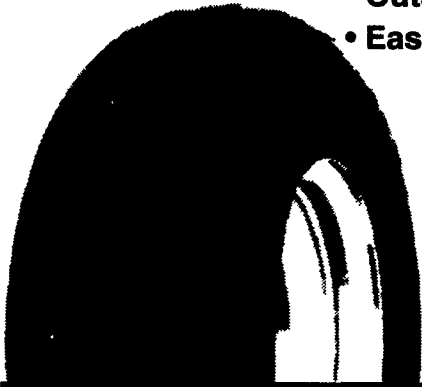
(Mounting Available)

- Excellent roadability provided by the over-lapping lugs in the center
- Traction in a wide range of sizes due to the long bar design
- Long wear and durability from the braced lug design
- Easy lug cleanability



FARM UTILITY

- Outstanding flotation
- Easy steering from the heavy grooved ribs



11L15 8 Ply TT
\$46⁹⁵

Other Sizes Available

Rib Implement Tire- Easy Operation
For Many Types of Equipment

TRIPLE RIB HD

- Improved steering in loose, cultivated soil provided by the deep, wide center ribs
- 3 rib design provides excellent steering capabilities



550-16 4 Ply TT

\$43⁹⁵

Other Sizes Available

WORKHORSE XG RADIAL

Heavy Duty On/Off Highway
Traction Radial

LT 235/75R15
Load Range "C"

\$99⁰⁰

Other Sizes Available



SURE GRIP LUG



6 Ply 10-16.5

\$99⁰⁰

Other Sizes Available

CALL 1-800-FARMTIRE. **GOODYEAR**

Service Tire Truck
Centers, Inc.
1601 Manheim Pike
Lancaster, PA 17604
717-569-8473

Service Tire Truck
Centers, Inc.
3403 Concord Road (PIE Building)
York, PA 17402
717-755-8473

Service Tire Truck
Centers, Inc.
5082 East Landis Avenue
Vineland, NJ
856-692-9393

Neatons Tire
25 East Ave
Easton, MD
1-800-317-6152

BHM Farm
Equipment
RD 1 Rt. 934 North
Annville, PA
717-867-2211

Lebanon Valley
Imp. Co.
700 E. Linden St.
Richland, PA
717-866-7518

Zim
Farm
So
B
717-