

32 MISCELLANEOUS

Outhouses WANTED; Will remove unwanted outhouses. We buy, sell & build to desired sizes & colors. 717-624-1307. Adams Co.

Firewood: 15 cord loads, cut, split, delivered. 814-667-3434

FIREWOOD: 10 acres, seasoned, tree tops and down logs, best offer. York Co, 717-993-6627.

220 Amp Century mig welder 717-351-0867 6PM -10PM.

SNOW PLOW: Boss V--blade, \$2,000 or offer. 410-879-7717.

Machine Shop Retirement Sale, equipment & tooling. 610-367-4139

Discount Prices on quality USA made 2" NPT taps \$20 & 1 1/2" NPT taps \$15. Add \$2 per set for shipping. Melvin Martin, RD#1, Box 943A, Martinsburg, PA 16662. 814-793-4199.

Bandsaws, planers, jointers, tablesaws etc. sanding belts, router bits, shapercutters. Plus lots more! Ask for catalog! Conestoga Wood Machinery, 987 Valley View Rd., New Holland, PA 17557 (800) or (717)445-4669.

NH 5hp engine on cart; old NH plate mill #6-12; NH wood saws. 610/286-5239 after 9pm.

FOR SALE: New & Used desks, files, chairs, fire-proof files, etc. NOLT'S, Ephrata, PA 717-859-1617.

31 NOTICE

AGRICULTURAL RESOURCE CONSERVATIONIST

The conservation districts of Lehigh and Northampton Counties are seeking an individual to work with Lehigh & Northampton County farmers in the areas of nutrient management, bio-solids application and resource conservation. Incumbent will be responsible for administering programs which assist farmers in complying with state and federal regulations. Four year degree in agriculture or related field is required, a farm background is a plus, PA state certification in nutrient management, or willingness to work toward same, is also required. Candidates should possess the ability of a self-starter and be able to work independently. Must have and be willing to use own vehicle. Salary in upper 20's, commensurate with experience; good benefits. For a complete job description, call 610-391-9583. Send cover letter and resume by 4:00 p.m., January 24, 2000 to **Lehigh County Conservation District, 4184 Dorney Park Road, Suite 102, Allentown, PA 18104** An equal opportunity employer.



(16) 28'X96" Pup Trailer \$1,950

(6) 28'X102" Pup Trailer \$2,850

Curry Supply Co., Curryville, PA 1-800-345-2829

1998 Kenworth T-800, 72" Aero Cab, 500 Det, 13 Sp., Fully Locking Rear Ends, 149,000 Mi., New Drive Tires.....\$80,000



1999 Wilkens, Walking Floor, 45'x96"x12'6" Fiberglass Floor, Cordless Remote, Lift Axle, Extra Lights, Empty Weight 12,860#, 6 months old \$3,500 Take Over Lease

814-259-3997



(2) 1989 GMC 7000

11' J&J Rock Body, 8.2 Diesel, 5+2 Trans., 35,000 GVW, One Owner, 20,000 Miles

\$15,900

717-264-7413

CASH FOR USED DIESEL TRUCKS!

- WE NEED 1/2 TON TO ONE TON:**
- FORD DIESELS
 - SUPERCABS
 - CREW CABS
 - DODGE CUMMINS
 - 2WD OR 4X4
 - DUALIES
 - DUMPS
 - UTILITY BODY
 - FLAT BEDS
 - CAB & CHASSIS
 - SUPER DUTIES

LOW MILEAGE ONLY PLEASE

Before you sell or trade your diesel in somewhere else for LESS. CALL US!

We Pay More for Used Diesel Trucks Than Anyone. 717-949-2000 TRY US!

OR 610-678-3243 Ask for Smokey or Kay **KELLER BROS.** RD 7, Box 405 Lebanon, PA 17042

Ready For Snow



1985 International 1600 Dump

33,000 GVW with 10 foot landscaping body (fold down sides). 9 foot plow hyd. spring. Also equip. for hyd. spreader attachment. Truck is also equip. to pull pintle trailers or ball trailers, elec brake unit wired, rubber 11-22.5 Truck has 18,000 miles on new engine, 6.9 diesel, had new alternator, steering box, rear, 2 new axles, 2 speed replaced in past 2 years, very well maintained, inspected.

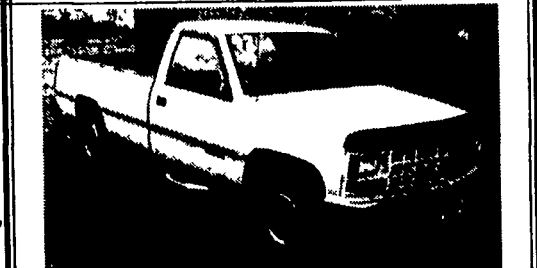
\$12,500 Neg. 717-627-4978

35 TRUCKS AND TRAILERS



'85 KW, W900, 400HP Cummins, 200" WB, \$11,500

717-354-8789



1992 CHEV. C2500

6.5 Turbo Diesel, 5-Spd. Trans., PS, PB, A/C, Tilt, Cruise, White, 138,000 Miles, Looks & Works A-1 - \$6,495

REBER AUTO CO.

Lincoln Ave & Cumberland St. (for 29 yrs) Lebanon PA 717-273-5941



1988 Diamond Reo Tri Axle Or Ten Wheeler

L10 Cummins /8LL Trans 20 to Choose From Starting at \$15,000

Heavy Equipment Loader Parts, Inc.

10070 Allentown Blvd., Grantville, PA 17028 (717) 469-0039 (800) 446-0505



1995 IH 4900 DT466 6 Spd., A/C 25,500 GVW. 20' Van Body w/Liftgate, A/B and Air Ride Seat

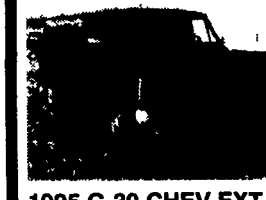
1995 FL 70 FREIGHTLINER 230 HP Cummins Diesel, A/C, 6 Spd., 33,000 GVW, 148,000 Mi., 150" C to A, Clean \$18,900



1994 INT. 4900 DT 466, 6 Spd., A/C, Dual Tanks, 22' Flatbed, L/G, 137,000 Mi., 25,500 GVW



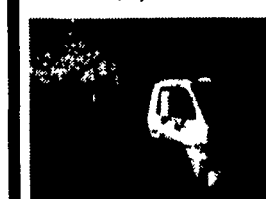
1993 FL70 FREIGHTLINER Cummins Diesel, 5 Spd., 22 Ft. Van, L/G, A/C, 26,000 GVW \$17,500



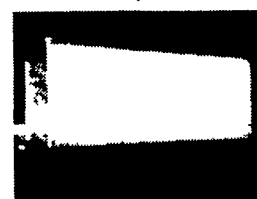
1995 G-30 CHEV EXT. CARGO VAN 350 Auto, 9200 GVW, 42,000 Mi., Very Clean \$9,500



1993 W-7 GMC TURBO DIESEL 5 Spd., 20 Ft. Van Liftgate, 25,950 GVW \$15,500



1993 W-4 GMC TURBO DIESEL Auto., 14,250 GVW, 12 Ft. Flat Bed Dump \$13,500



15 FT.-24 FT. VAN BODY Ex. Cond. 18 Ft. Reefer Bodies, Electric Units, Good For Cold Storage (Will Deliver)

MARTIN'S USED TRUCKS & EQUIPMENT INC.

560 Lampeter Rd., Lancaster, Pa. 17602 Robert Martin (717) 299-6200 • (717) 392-6266

WE SERVICE WHAT WE SELL

Providence

Chrysler - Plymouth - Dodge - Jeep
We care about the customer after the sale.

SERVICE HOURS: MON., WED., FRI: 7:30AM - 5PM TUES., THURS: 7:30AM - 7PM

SALES HOURS: MON. thru FRI: 9AM - 9PM SATURDAY 9AM - 4PM

SALES ■ SERVICE ■ LEASING ■ WE WILL SERVICE ANY CHRYSLER PRODUCT!



NEW and USED TRUCKS IN STOCK

TOLL FREE 877-288-9996 717-284-9900

804 Lancaster Pike, Quarryville, PA 17566
Just North of the Buck on Rt. 272



ALIGNMENT SPECIAL Any Mopar Vehicle

Chrysler - Plymouth - Dodge
Car/Van Two Wheel \$44.95
Car/Van Four Wheel \$49.95
Any Dodge Truck \$45.95

Also ask about other service specials