

**CANCELLED ORDER SALE**

**40-50% OFF**

**CALL NOW!**



**FACTORY DIRECT**

**SERIOUS INQUIRIES PLEASE**

30x40 (1 LEFT)      45x80 (1 LEFT)  
40x54 (1 LEFT)      50x100 (SOLD)

**PIONEER STEEL BUILDINGS**  
**1-800-293-2097 EXT. 222**

Pole buildings, storage, pre-fabricated poultry and swine building packages featuring:

**Wheeling Corrugating Company**  
SINCE 1890

Fast. Economical. Good Looking. Practical.



Wheeling painted, galvanized steel roofing and siding, it's not your grandfather's corrugated. Today, it's crisp profiles. Handsome colors. Unbeatable durability. We have it all. Right here.

**celotex**



Insulation/Finish Board  
**AG THERM**  
THE INSULATION & INTERIOR FINISH DESIGNED FOR AGRIBUSINESS/RURAL APPLICATIONS

**PLYCO**

DOORS  
WINDOWS

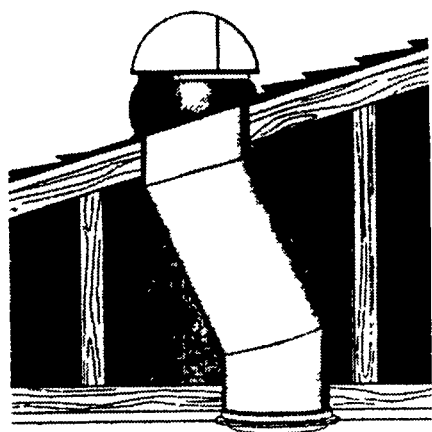
**COMBO**

Sliding door tracks and builders hardware

Authorized Dealer Distributor Since 1982

Northeast Agri Systems, Inc.  
Flyway Business Park  
139A West Airport Road  
Littiz, PA 17543  
Ph (717) 569-2702  
1-800-673-2580

**Light Up Your Home**  
With A **SUN STAR**  
**Tubular Skylight**



**Harvest The Sun**

- Bright, natural light
- Little or no heat gain
- Fits all roof types
- 10", 13", 18", 21"
- 15 year transferable warranty

Have us install or ask for the Do it Yourself Kit  
Can be shipped UPS



265 E. Meadow Valley Rd., Littiz, PA 17543  
**717-733-7160 • 717-627-6886**  
**1-800-247-2107**

Financing Available

**Metal Roofing and Siding**

Excessive Inventory - No Warranty

6 pc	14'	26 ga galvalum	\$19.60
22 pc	14'	dark gray	\$15.40
11 pc	20'	galv	\$16.00
13 pc	16'	white	\$17.60
30 pc	18'	white	\$19.80
17 pc	20'	double dip gal	\$20.00
35 pc	22'	double dip gal	\$22.00
10 pc	13'	red	\$14.30
10 pc	10'	light stone	\$10.00
25 pc	16'	white alum	\$20.00
42 pc	14'	white alum	\$18.00
12 pc	12'	white alum	\$15.00
8 pc	14'	quaker gray	\$15.40
12 pc	16'8"	green	\$17.60
22 pc	13'	brown c d	\$14.30
12 pc	12'	black	\$12.00
20 pc	14'	light gray	\$15.12
45 pc	13'4"	white	\$14.00
19 pc	15'	galvalum	\$12.75
16 pc	13'	white	\$14.04
32 pc	14'	brown	\$15.40
35 pc	20'	white	\$21.60
12 pc	21'	dark gray	\$23.00
50 pc	12'	white	\$12.96
65 pc	14'	dark gray	\$15.00
24 pc	13'3"	light gray	\$14.00
14 pc	14'	dark gray	\$15.00
18 pc	17'	light gray	\$18.00
18 pc	16'	red	\$17.28
11 pc	13'	green	\$14.00
22 pc	14'	galv	\$9.24
25 pc	14'	light stone	\$15.12
8 pc	18'	green	\$19.00
2 pc	16'	light stone	\$17.00
15 pc	17'	brown	\$18.00

**MARTIN'S ROOFING**

258 Walnut Bottom Rd.  
Shippensburg, PA 17257  
CALL FOR DISCOUNTS!  
**(717) 532-3460** Rt. 81, Exit 10

**STEEL BUILDINGS**

Factory Direct Prices

Industrial - Commercial - Agricultural

In Stock Metal Building Supplies:  
Girts, Purlins, Sheeting, Etc.

**Scenic Ridge Construction**  
48 Queen Road  
Gordonville, PA 17529

Contact Elam or Carl  
Phone: (717) 768-7522  
Fax: (717) 768-8522



**Metal Roofing and Siding**

Excessive Inventory - No Warranty

100 pc	12'	galv	\$7.20
100 pc	14'	galv	\$8.40
100 pc	16'	galv	\$9.60
100 pc	18'	galv	\$10.80
100 pc	20'	galv	\$12.00
6 pc	14'	26 ga galvalum	\$19.60
22 pc	14'	dark gray	\$15.40
11 pc	20'	galv	\$16.00
13 pc	16'	white	\$17.60
30 pc	18'	white	\$19.80
17 pc	20'	double dip gal	\$20.00
35 pc	22'	double dip gal	\$22.00
10 pc	13'	red	\$14.30
10 pc	10'	light stone	\$10.00
25 pc	16'	white alum	\$20.00
42 pc	14'	white alum	\$18.00
12 pc	12'	white alum	\$15.00
8 pc	14'	quaker gray	\$15.40
12 pc	16'8"	green	\$17.60
22 pc	13'	brown c d	\$14.30
12 pc	12'	black	\$12.00
20 pc	14'	light gray	\$15.12
45 pc	13'4"	white	\$14.00
19 pc	15'	galvalum	\$12.75
16 pc	13'	white	\$14.04
32 pc	14'	brown	\$15.40
35 pc	20'	white	\$21.60
12 pc	21'	dark gray	\$23.00
50 pc	12'	white	\$12.96
65 pc	14'	dark gray	\$15.00
24 pc	13'3"	light gray	\$14.00
14 pc	14'	dark gray	\$15.00
18 pc	17'	light gray	\$18.00
18 pc	16'	red	\$17.28
11 pc	13'	green	\$14.00
22 pc	14'	galv	\$9.24
25 pc	14'	light stone	\$15.12
8 pc	18'	green	\$19.00
2 pc	16'	light stone	\$17.00
15 pc	17'	brown	\$18.00

**MARTIN'S ROOFING**

258 Walnut Bottom Rd.  
Shippensburg, PA 17257  
CALL FOR DISCOUNTS!  
**(717) 532-3460** Rt. 81, Exit 10

**Galvanized Pipe Sale**

1-1/4" \$.70/foot  
1" \$.55/foot  
3/4" \$.40/foot  
1/2" \$.30/foot  
**717/656-9876**

**OUTDOOR FURNACES**  
classic stoves are a safe efficient answer to your heating needs. Please call for free literature. Installation and accessories available. Ken Stauffer  
717-539-4606,  
888-539-4606,  
717-539-4703.

Gray Limestone Barn Foundation, Cut Stone Corners. Located Between Shippensburg & Newville. On Rt 533 717-632-4570.

Outhouses WANTED; Will remove unwanted out-houses. We buy, sell & build to desired sizes & colors. 717-624-1307. Adams Co.

**Winter Specials**

**MUSSERS & ASSOCIATES, INC.**



**"The Pole Building Specialists"**  
245 Fetterville Rd.  
East Earl, PA 17519  
(717) 354-7561

**GARAGE SALE!!!**

 \$6,995 24x40x10	 \$9,395 24x44x10	 \$10,495 30x48x10
All buildings are priced as fully erected on your level site. Many other sizes and options are available. Call today for FREE information and estimates <b>1-800-331-1875</b>		
 \$13,950 30x60x14		

**Country Best**



Centurydrain® roofing and siding from Wheeling Corrugating: slick looking, tough, economical.

- High tensile galvanized steel for strength, durability.
- Drain channel and tight laps for snug, dry interiors.
- Wide selection of bright, baked-on contemporary colors.

MANUFACTURING CUSTOM TRIM

**MARTIN'S ROOFING**

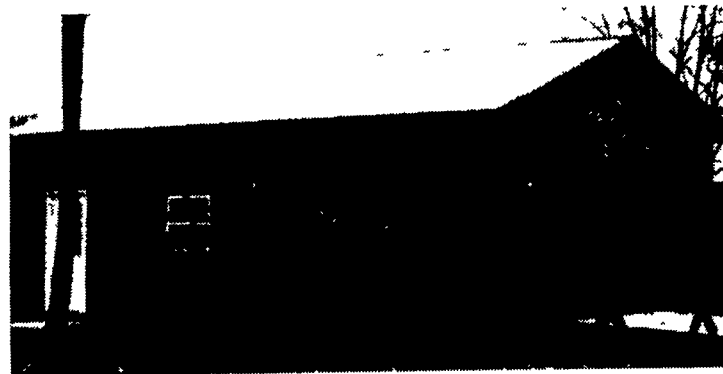
CALL FOR DISCOUNTS!  
**(717) 532-3460** 258 Walnut Bottom Rd., Shippensburg, PA 17257 Rt. 81, Exit 10

25 Year Limited Warranty

**PPB**

**Pioneer Pole Buildings, Inc.**

Toll Free 1-888-448-2505  
www.pionpole.qpg.com



24x32x10 \$5,900 installed!!      30x40x10 \$7,900 installed!!  
30x32x10 \$6,900 installed!!      30x64x10 \$12,499 installed!!

Add an extra sliding or overhead door for \$500

- All 4 include
- 1- 3'x6'8" steel 6 panel insulated entry door
  - 1- 10x10h sliding door or 1-9x8h overhead garage door (your choice)
  - 25 year warrant Everlast painted steel (your choice of color on roof, sides trim)
  - Steel roofing and siding is G-100 painted and heat roll-framed by Everlast Inc 40# per sq ft snow load on trusses 2x6 top and bottom chord
  - #1 southern yellow pine carriers
- All materials, labor, delivery, taxes included!!! No hidden costs!!!
- Company Owned Crews
  - Over 20 colors to choose from
  - Quick construction date
  - Top Quality Workmanship
  - Top Quality Materials
  - Top Quality Service

**BEFORE YOU BUY GIVE PIONEER A TRY!!!**  
**WINTER SPECIAL 24x24x8**

1-16x7 Insulated Garage Door  
1-3'x6'8" Insulated Entry Door  
Installed for \$4,900



Financing Available

Other Sizes Available

Call For Free Literature or See us at www.pionpole.qpg.com

