

# Make it Milk

BUY, SELL, TRADE OR RENT THROUGH THE  
**CLASSIFIED ADS**

PHONE: 717-626-1164 or 717-394-3047  
FAX 717-733-6058

Mon., Tues., Wed., Fri. 8 AM to 5 PM; Thurs. 7 AM to 5 PM

## 1A CONSTRUCTION EQUIPMENT

Case 1450 Track Loader, nice, \$17,500. Klingers-town. 570-425-9177

Wanted to buy: Steering clutches (pack), AC HD6, other parts. 814/942-3821 6-9pm or iv. msg.

Buying or Selling: Parts & service manuals for construction equipment, thousands in stock. Heavy Equipment Loader Parts, 1-800-446-0505.

Clark 8000 lb. forklift, \$1800. Cat 4000 lb. forklift, diesel, air tires, \$5000. 225 CFM diesel air compressor, \$2800. 20,000 gal. water tank, \$800 obo. 717-733-0575

Fassi model F145.23 crane w/electric remote controls & hydra rotating grapple, \$15,000 OBO. 410-239-8006 days, 410-374-4352 eves & weekends.

Barber Green, SB/131, rubber tire paver, JD 4cyl dsl, 16', XRG2 screed, \$15,000 OBO. (2) Hyster C330A 3/5 ton blacktop roller, GM 4cyl gas eng, hydro, \$3,000ea OBO. Cat truck, 1972 Mack R model, w/1000 gal, ET-NYRE maint. dsl. w/Hatz dsl, 10' spray bars, \$12,000 OBO. 410-239-8006 days, 410-374-4352 eves & weekends.

Air operated rock drill, \$2,000. 750 CFM compressor, \$2,500. 908-218-9191.

Good used 6.354 Perkins diesel 85hp, hydraulic pump, 34gpm closed center piston pump, air greaser w/ 120 lbs. barrel, almost full. 717-274-5309.

sanborn portable wide band sawmill, 60hp eng, 26" throat, \$15,000. Pettibone super 8 4WD forklift. Jake, 302-654-1436.

Case 580 C Industrial loader, good for snow removal. \$8,995 (570)345-4882.

New & Used Parts for Cat/Case/Deere/Komatsu/Fiat Allis. Call us for your parts needs. Heavy Equip Loader Parts, Rt 22, Grantville, 800-446-0505.

Belt Loader Athey 7-11, Def. Pwr. w/side discharge, \$3,500. New rubber. 410-833-9091

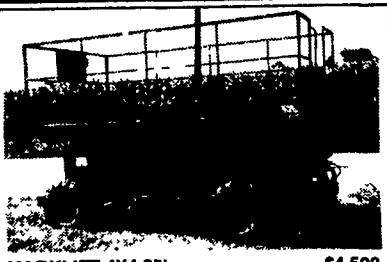
WANT TO BUY all makes and models of construction equipment. 301-371-5500.

## FORKLIFTS

2,000 TO 15,000 LB.  
\$2,000 & upwards  
GAS/LP-DIESEL-ELECTRIC  
Cushion-Pneumatic-Rough Terrain  
New Komatsu Forklifts Available  
PA INDUSTRIAL EQUIPMENT  
(610) 369-9778



BOBCAT 7753 SKID LOADER, 2700 Hrs., Good Condition, Good Rubber \$9,800



MARKLIFT 4X4 25' \$4,500

1996 1845C SKID LOADER, 98 Hrs., Like New.....\$18,700

717/529-2641 • 717/529-6359

No Sunday Calls



88 Case 580K, 4x4, Standard-hoe, 4200hrs., Nice, \$20,900



JD 644B, New Brakes & Oil Cool, 90%Rub, Tight Pins, Nice, \$22,900



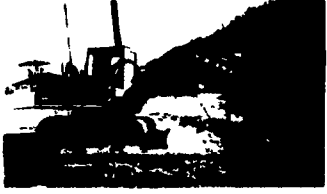
93 Case 580SK Turbo, 4x4, Ext-hoe, 7100hrs, Works Ex, \$25,900



69 Case 450 Loader, Mostly New UC, Diesel, Works Ex. \$6,900



88 JD 675B, Material Bucket, Nw Tires, 44Hp, 1500lb Lift, \$8,900



Koehring 6605 Excavator, Dozer Blade, Izuzu Diesel, \$8,900

76 Case 580B Diesel Backhoe/Loader, Cab, New Tires, \$8,000  
88 Cat 416 Turbo 4x4 Backhoe, EROPS, Ext-hoe, New Tires, 3200hrs, Very Nice, \$22,000  
79 International 260A 2wd Backhoe/Loader, Diesel, OROPS, \$7,500  
Cub Cadet Compact Loader 4X4, 27hp Diesel, 500hrs, Very Nice, \$14,000  
Cub Cadet 1710 Hydrostatic Garden Tractor/Mower w/Powered Leaf Vacuum, \$1,500  
88 Dodge Stake Body Truck w/Lift Gate, \$5,900  
79 International Dump Truck, Gas Engine, No CDL Required, \$4,500  
Pull Along Air Compressor w/Jack Hammer, Dostz Diesel, \$3,500  
99 Hudson 16' Construction Trailer, 9950 GVW, Like New, \$2,500

Don Fegley Jr. (570) 386-4151  
Route 309 South, Tamaqua Evening 386-3084

Batam oil terrain crane, 12 1/2 ton 4x4, DD power, all hyd; concrete pump Putzmeister 3" 100', 3" hose, less than 100 hrs. 717/432-4003 York Co.

JD 455D Loader w/Roof Rake & Bucket 12G CAT Grader. 814-652-5604.

Steel plates avg. 6'x8'x3/4", 23#/lb. Conveyor 30' B&S engine. Swivel dolly cart on pickup \$2500. 215-886-5000

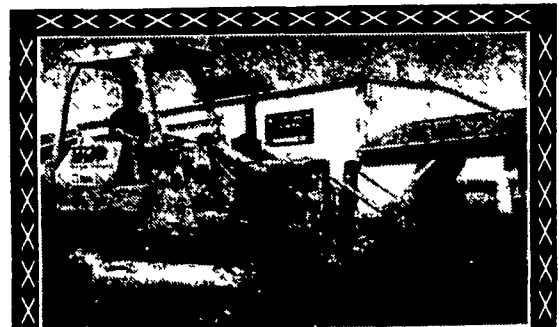
Parting Out: Int. Harv. T340, TDG, T9, TD9, 150 lots of parts. White 9000 diesel tractor, 230 Cummins, 10 speed, trans for parts or repair, good cab. Somerset Co. NJ 908-658-3414

Gehl skid loader, dsl, exc cond, 10 hrs, front hydro, quick detach bucket, \$6,500 or first reasonable offer. 301-432-2197.

Bobcat 753 w/forks & bucket, 810 hrs, garage kept. 570-222-9090.

HOUGH Payloader & Bucket w/IH 282 dsl. running eng. Sell as is. No reasonable offer refused. 717-776-6242.

Double Headed Roller, 10' dia, \$1,500  
10 HP 3 Phase VFD Compressor, \$1,500  
Peter R Saw 7.5 HP, \$5,500  
All Call For See Our Equipment  
**610-258-9165**

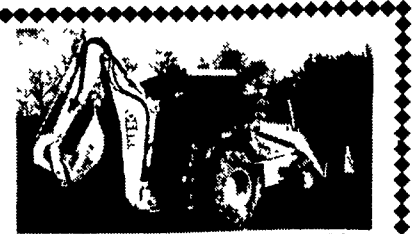


Caterpillar 955L CRL Loader  
Big BTM V. Good Condition  
\$25,000

Heavy Equipment Loader Parts, Inc.  
10070 Allentown Blvd., Grantville, PA 17028  
(717) 469-0039 (800) 446-0505



Cat D4B Dozer, 6 Way Blade, 95% UC, 3,034 Hrs., 1988, OROPS, SN2XF00308 \$26,500



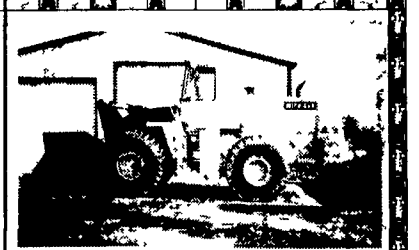
JD 310E Backhoe, 4X4, EROPS, 1998, Hydraulics, 821 Hrs., SN/TO310EX847443 \$46,900

Hitachi EX120-2 Excavator, 92 Model, 3522 Hrs., EROPS, SN12N34126.....\$33,500  
Bomag BW213-2 Vibratory Roller, EROPS, 1994, 1,856 HRS, Good SN270171R.....\$38,000  
Tramac 400 Ram Hammer, Rebuilt By Dealer.....\$7,500  
Freightliner, FL112 3X Dump Truck, 89, Steel Box, Power Tarp, Cummins, 9 Speed, SN 1FVX1C4BXXH409618, Good Condition.....\$38,000

**STONEY CREEK**  
CONTRACTOR SERVICES  
**EQUIPMENT RENTALS**  
415 Park Road FLEETWOOD, PA 19522 (610) 944-5332  
TOLL FREE 877/944-5332



1997 JCB 4x4 Backhoe w/Ext. Hoe, Cab, 183 hrs.....\$46,000



1988 Volvo Michigan L190, Nice.....CALL



1996 Case 550G, Long Track, New Sprockets & Rollers.....\$41,000

**LOADER BACKHOES**  
97 JCB 214 Series III, 198 Hours, 4x4, Cab & Extendhoe \$45,000  
93 Case 580K Super with Turbo, 4x4 Cab, Extendhoe ~~\$24,000~~ SOLD  
97 Predator Loader & Backhoe, 4x4, 90 Hrs \$14,500  
87 Ford 655 with Cab & Extendhoe \$12,000  
Ford 555 with Cab & Extendhoe \$10,500

**WHEEL LOADERS**  
(2) 88 Volvo Michigan Loaders, 29" Rubber.....\$46,000  
Allis 640, 70% Rubber, 4.5 Yd. Bucket, Light & Heater, 26" Rubber.....\$16,500  
Cat 966B, 70% Rubber, 4 Yd. Bucket.....\$16,500

**LIFT EQUIPMENT**  
Grove 66 Ft. 4x4 Manlift \$24,000  
Grove 45 Ft. 2x4 with 1700 Hrs.....\$15,500  
Simon 66 4x4 Manlift \$17,900  
Marklift 25 Ft. 4x4 Scissor Lift \$5,500  
JLG 40 Ft. Scissor Lift, 4 Cylinder Ford.....\$7,500  
Hydraulic Excavator, 1994 Cat 311, Low Hrs.....\$36,000  
Samsung Excavator on Rubber.....\$8,500

**CRAWLER DOZER**  
94 John Deere 650G with 6-Way, 80% UC.....\$46,000  
96 Case 550G, New Rollers & Sprockets, Nice & Clean.....\$41,000  
Komatsu B57S Crawler Loader w/400 Hrs on New Cummins Engine.....\$17,900

**GRADERS**  
87 CAT 140G, Cab & Scarifier, Real Clean.....\$67,000  
Dynapack Double Drum 66" Roller with Vibrator w/Cat Diesel.....\$15,500  
Ford Tractor, 540 Diesel with 650 Hrs., Cab, Heat & Snow Plow.....\$7,200

**AA Equipment**  
717/529-2512  
No Sunday Calls  
1797 Robert Fulton Hwy., Quarryville, PA 17566  
• We Buy & Sell • Financing Available