

Glick Receives Friend Extension Award

GAIL STROCK

Mifflin Co. Correspondent

BELLEVILLE (Mifflin Co.) — "Everything I was asked to do I thought was too much for me, and I surprised myself and took on the challenge."

That describes how J. Elrose Glick of Belleville, Mifflin County, felt over 25 years ago when asked to serve on the Mifflin County Cooperative Extension board and then the state board. Since then, Glick has served on the board of the Pennsylvania Beef Council for six years, the National Cattleman's Beef Board for five years, the Mid State RC&D board for five years, and the Pennsylvania Farm Bureau board for eight years. And, according to Glick, it all began with a leadership training program offered through Extension.

Just recently, Glick received the prestigious Friend of Extension award at the Mifflin County Cooperative Extension annual meeting held December 6 at the Penns Valley Christian Retreat near McVeytown. Extension's professional fraternity, Epsilon Sigma Phi, selects only one individual each year for the Friend of Extension award.

How does he feel now?

"I find great joy and fulfillment in sharing in programs that benefit others," Glick said proudly. He then read the plaque. "It says, 'We hereby name J. Elrose Glick a state Friend of Extension in recognition of outstanding public service and support of the Penn

Sate University, Cooperative Extension Service, and its educational programs.' It's been signed by the president of the National Council and chapter president and was presented by Diane Brown, Assistant Director of Cooperative Extension at Penn State."

Dave Filson, Mifflin County's Cooperative Extension and Outreach Director, nominated Glick for the award.

Because Elrose volunteered, many others benefited. Over 25 years of service is significant, and we wanted to show Elrose our appreciation. He deserved this recognition," Filson commented.

Glick received another award that evening from Penn State's College of Animal Science, the Pennsylvania Council of Cooperative Extension, and the Mifflin County Extension Service for more than 25 years of exceptional volunteer service on the local board.

Glick a dairy farmer near Allensville, became involved with Extension in 1972 when Norm Glick asked him to serve on a committee. The board then offered a leadership training course through the Kellogg program. Within a year, Elrose Glick was appointed by the local Extension board to serve on the state board.

"I had the privilege of seeing

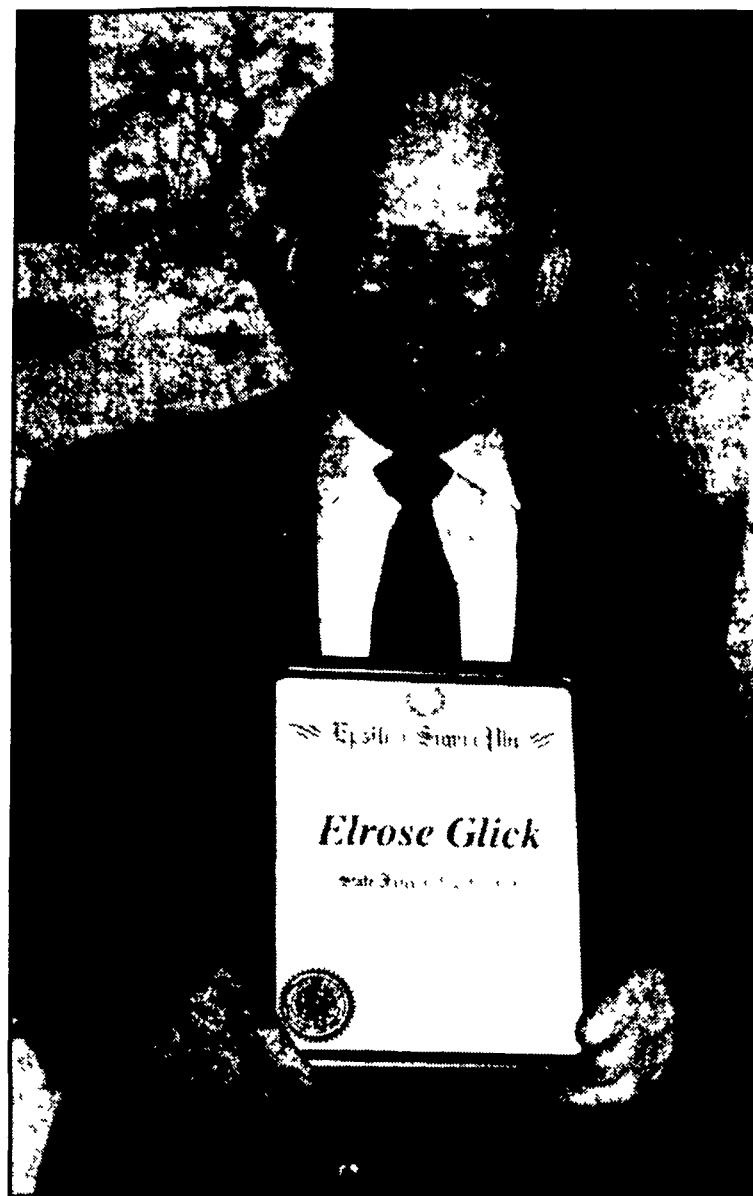
it born, nurtured, develop, and grow. Then they asked me to head the state annual meeting committee. I didn't think I could do it. It was the first time they had an annual meeting."

Glick surprised himself again four years later when he was asked to go to Washington for a Northwest conference to visit legislators for national funding for Cooperative Extension.

On the state board, Glick had the privilege of meeting with state legislators, carrying Pennsylvania Council of Cooperative Extension messages to the president of Penn State, and helping to initiate the tradition of inviting local commissioners to Ag Progress Days. Glick said that hundreds of thousands have benefited from the decisions made by the state Extension board.

When receiving these awards, Glick invited his wife, Pauline, up for the presentation. He said she has always been eager to see her husband excel and succeed and is always ready to support any organization he becomes involved with. He said that behind every successful man stands a more successful companion.

Glick said that Extension is poised for success into the new millennium and that this is one of the greatest times in history to be part of Extension.



J. Elrose Glick of Belleville poses with his Friend of Extension plaque. He received it for over 25 years of dedication to the Cooperative Extension Service.

MILK. IT DOES A BODY GOOD.™

New Addition

AG-BAG

INTERNATIONAL LTD

New Addition



MH9512 - 12'/250 HP Ag-Bagger for Trucks

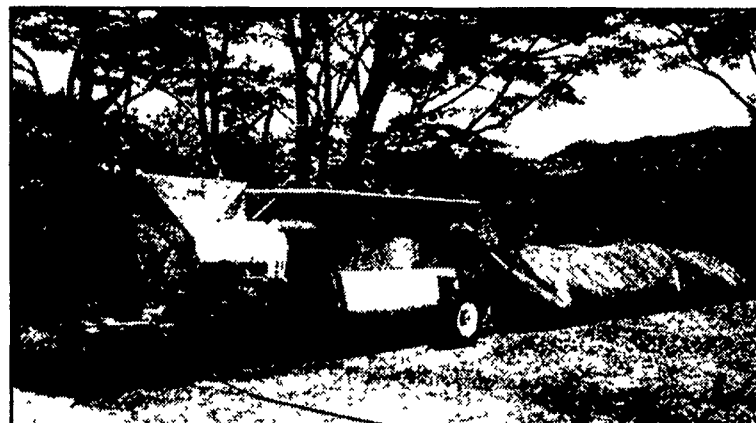
- High Volume 4-7 tons per MINUTE
- Capacity up to 500 tons per bag

Keystone Farm Show Highlights

- 12' Motorized Machine - Don't miss it!
- G6009 Bagger - Industry Standard - Come see it!
- CT-5 Compost Machine-Composting System
- Year End Specials on NEW & RENTAL Machines

**ON DISPLAY
AT KEYSTONE
FARM SHOW
Booth # 708A**

*Technology for the Future
Come and see us!*



CT-5 Compost Machine-Composting made Simple

- Complete on Farm Composting System
- Custom on Farm Composting Services

Keystone Farm Show Specials

- Ag-Bag Plus Inoculant-Early Order Discounts!
- 24 Month Bags @ '99 Pricing-Beat Y2K Prices!
- Bunker Covers-White/Black up to 60' x 200'
- Bird Netting for Bales and bags-New product!

AG-BAG

INTERNATIONAL LTD

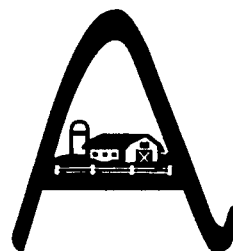
2320 SE Ag-Bag Lane
Warrenton, OR 97146

1-800-334-7432 Fax 503-861-2527

silage@ag-bag.com

www.ag-bag.com

Territory Manager:
Harold Stern
301-698-1268



Dealer:

Agri-Service LLC
Rental & Custom Services

14137 Pennsylvania Ave. ~ Hagerstown, MD 21742

(301) 665-9333 or TOLL FREE (877) 412-4224

Serving MD and South-Central PA