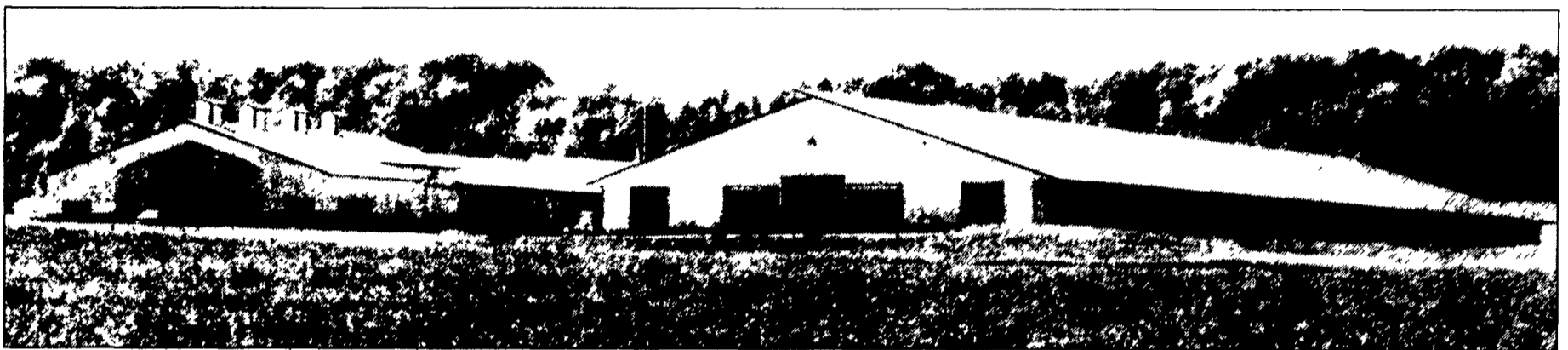


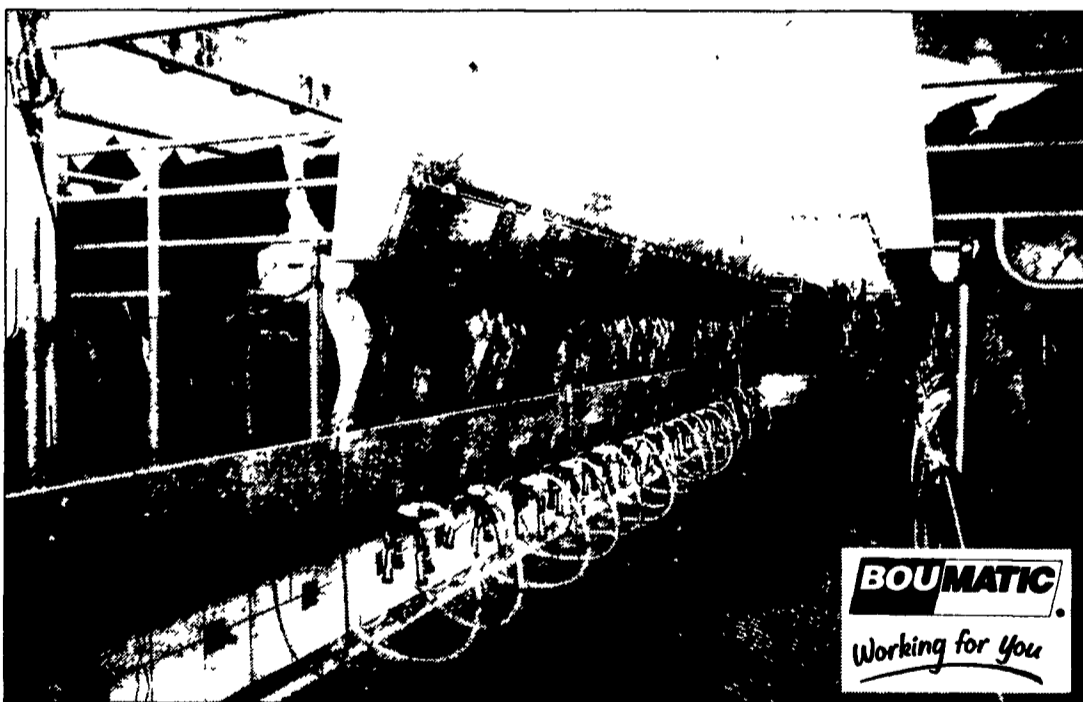
Thanks & Congratulations...

# Kulp Family Dairy Farm Martinsburg, PA (Blair Co.)

ALL NEW STATE-OF-THE-ART DAIRY COMPLEX featuring a  
BOU-MATIC DOUBLE 15 XPRESSWAY PARALLEL PARLOR



534 Freestall Barn & Milking Center designed & built by King Construction



### Featuring:

- Empire Quality Side Curtains
- Ritchie All-Purpose Waterers
- Norbco Freestalls, Supergates, Fencing
- Norbco "New" Traffic Cop Rotary Gate
- Houle Alley Scrapers & Lagoon Pump
- Sand Trap Freestall Bases
- Electrical Work By Zimmerman

<p><b>Lancaster Dairy Farm Automation</b> "Large Enough to Serve You, Small Enough to Care." Litz • Centre Hall • Belleville • Shippensburg • Martinsburg <b>1-800-422-4587</b></p>		<p><b>KING CONSTRUCTION CO.</b> 601 Overly Grove Rd., New Holland, PA 17557 <b>717-354-4740</b> Phil Van Lieu Home: 717-259-9077 <b>Visit Us At Keystone Farm Show</b></p>		<p>Financing Provided By: <b>FIRST UNION</b> Hanover (717) 633-4003     Reading (610) 655-2882 Lancaster (717) 291-3519     John OR Mattillio 1-800-342-6926</p>	
<p><b>Ritchie</b> All-Purpose Fountains</p>	<p>Empire Quality Curtains <b>EMPIRE Agri-Systems, Inc.</b> 7240 NYS Rt. 5 Auburn, NY 13021 <b>800-216-6029</b></p>	<p><b>NORBCO, INC.</b> BARN EQUIPMENT • Freestalls • Supergates &amp; Fencing • NEW Traffic Cop Rotary Gate <b>315-853-3936</b></p>	<p><b>ZIMMERMAN</b> ELECTRICAL CONTRACTORS, INC. 4467 Woodbury Pike Woodbury, PA 16695-9715 814-793-1870 FAX 814-793-1872</p>	<p><b>SAND-TRAP</b> FREESTALL BASE TOPPER, INC. 23307 Highway 151 Monticello, IA 52310 Phone (319) 465-4287 Fax (319) 465-6794</p>	<p>Alley Scraper &amp; Lagoon Pump <b>SNOOK'S EQUIPMENT</b> RD 3, Box 130 Mifflinburg, PA 17844 570-966-2736 <b>HOULE</b></p>