

♦ FARM FORUM ♦

♦ FARM CALENDAR ♦

- Sunday, January 16
- Monday, January 17
 - New Holland Vegetable Day, Yoder's Restaurant, New Holland, 9:30 a.m.-3:30 p.m.
 - Regional Agronomy Day, Licking County Joint Vocational School, Newark, Ohio, 8:30 a.m.-3 p.m.
 - 36th Annual Meeting of the Farm and Home Foundation of Lancaster County, Farm and Home Center, 6:30 p.m.
- Tuesday, January 18
 - N.J. Annual Vegetable Meeting, Taj Mahal, Atlantic City, thru Jan. 20.
 - Risky Business-Solutions, Financial Management Seminar, West York, 9 a.m.
 - Regional Agronomy Day, Wilmington, Clinton County Fairgrounds, Ohio, Expo Center, 8:30 a.m.-3 p.m.
 - Lime and Fertilizer Conference, Penn Stater, University Park, thru Jan. 20.
 - Great Lakes Vegetable Growers Convention, Grand Rapids, Mich., thru Jan. 22.
- Wednesday, January 19
 - Risky Business-Solutions, Financial Management Seminar, Chambersburg, 9 a.m.

(Continued from Page A10)

to UNITE, and then proceeded to dump one day's milk. How much would this affect the price of milk? I am not sure, because I don't have all the numbers in front of me, but take a look at these numbers from September.

In three regions, New England, New York/New Jersey, and Mid-Atlantic production totals were 1,892,331,000 pounds from 17,625 producers.

If the producers in these three regions were to dump one day's milk (63,078,981 pounds). It would represent about 3.3 percent of the receipts for the month. Now assuming that the other regions in the U.S. are similar, we would be reducing the milk supply by about 3.3 percent. Reducing the milk supply by 3.3 percent nationwide would definitely cause the price to increase. How much? I'm not sure, but I think it would surprise all of us dairy producers. We often hear about a mythical milk surplus

of 4 percent. Dumping one day's milk would basically eat up that surplus.

I know what you are thinking. I can't afford to lose one day's revenue. Well to offset the lost revenue we would buy futures on milk and cheese. Can we unite all the dairy farmers? I hope so, because it's the only way we will ever get paid a good price for our milk is if we join as one.

If we don't unite, then we will continue to produce more and more milk, while the price of that milk will continue to drop. With upcoming milk around \$12 cwt just take a minute and think if all the work you do as a dairy farmer is worth \$12 cwt. Personally I would feel more comfortable in the \$15-18 range. Fax me at (413) 586-4092 or email me at user196576@aol.com if you have any interest in uniting as dairy farmers.

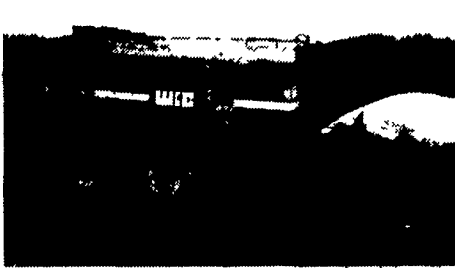
Brian C. West
Hadley, Mass.

- (Continued from Page A10)
- ter, 9:30 a.m.-2:30 p.m.
- Dairy Farm Management Basics, Two-Day Session, Lancaster Farm and Home Center, 10 a.m.-3 p.m., also Jan. 14.
- Berks County Dairy Day; Berks County Ag Center, Leesport.
- Schuylkill County Dairy Day, Penn State Schuylkill Campus, 9:30 a.m.-2:30 p.m.
- Saturday, January 8
 - Pennsylvania Farm Show, Farm Show Complex, Harrisburg, thru Jan. 13.
- Sunday, January 9
 - Beyond Cheddar 2000 at the Pa. Farm Show, Family Living Center, 2 p.m.-3 p.m.
- Monday, January 10
 - Farmers' Market Association Leadership and Communication Skills Workshop, NYS Dept. of Agricultural Markets,
- Tuesday, January 11
 - Albany, N.Y., 10 a.m.-4 p.m.
 - Morrison's Cove Produce Auction meeting, Martinsburg.
 - FSA Production Workshop, Lebanon Valley Ag Center, 10 a.m.-3:30 p.m., also Jan. 13, 25, and Feb. 8 and 16.
 - Ephrata Area Young Farmers pesticide meeting, Lincoln Village Smorgasbord, Ephrata, 6:45 p.m.
- Wednesday, January 12
 - Thursday, January 13
 - Mexico Vegetable Growers meeting, Mexico.
 - Drought Recovery Financial Series, Holiday Inn, Bethlehem, 10 a.m.-3:30 p.m.
 - Friday, January 14
 - Crop Insurance: Making It Work For You!, Cochranville Fire Hall, 9 a.m.-3 p.m.
 - Saturday, January 15
 - Dauphin County Holstein Association Annual Meeting, Old Country Buffet, Harrisburg, 10:30 a.m.

MANURE MEN FOR THE NEW MILLENNIUM

Alley Scrapers • Barn Cleaners • Piston Pumps • Agitators • Flush Valves • Flush Pumps • Irrigation Pumps • Transfer Pumps • Tank Spreaders • Lagoon and Pit Pumps • Separators • Sump Pumps • Lagoon and Pit Pumps • Tank Spreaders • Transfer Pumps • Agitators • Flush Valves • Flush Pumps

Alley Scrapers • Barn Cleaners • Piston Pumps • Separators • Lagoon and Pit Pumps • Tank Spreaders • Transfer Pumps • Irrigation Pumps • Agitators • Flush Valves • Flush Pumps



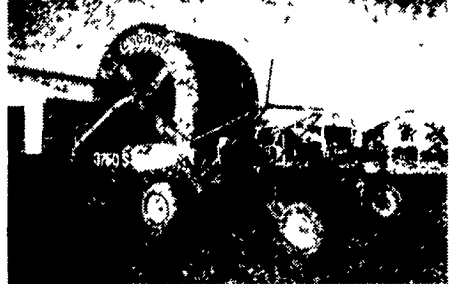
1989 WIC 2,900 Gal. Spreader w/16.5x16.1 Tires, Good Shape.....\$3,500



Badger BN 184 Lagoon Pump, Frame Sound, Bearing Assembly Good.....\$2,750



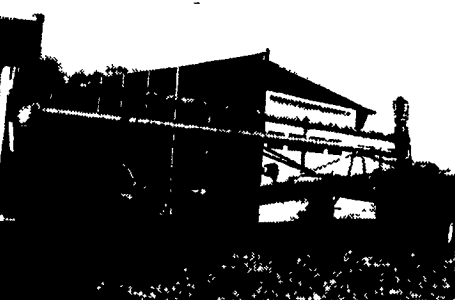
Houle 9.5' 3 Pt. Agi-Pump Rebuilt.....\$3,350



1994 Cadman Irrigation Reel, 3.75" x 1150' Hose, Engine Drive, Excellent Condition.....\$14,950

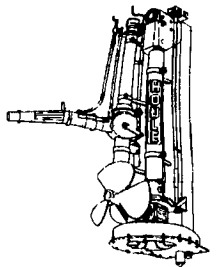
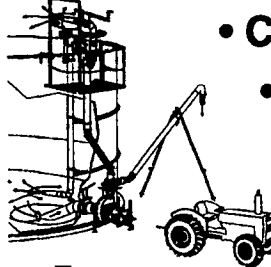
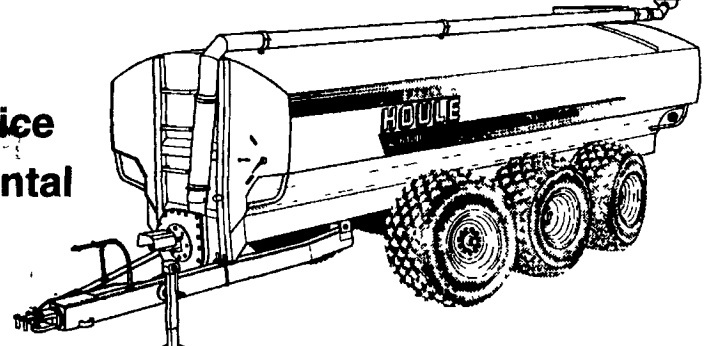


1995 NH 155 Spreader, Good Shape.....\$2,750



1989 Houle 32' Lagoon Pump, Just Rebuilt, Ready to Pump.....\$4,750

- Sales
- Service
- Rental



- Custom Application
- Installation
- Custom Design

Liquid Manure is a valuable resource and a challenge to handle. You need an expert!

At Mid-Atlantic Agrisystems, liquid manure is our bread and butter not a sideline. To solve your problems we carry the most

complete line of equipment in the region, have years of practical hands-on experience, and offer valuable knowledge about products and the latest, most effective manure handling equipment.

Call the experts.
Call Mid-Atlantic.

**Stop by our display
Memorial Hall, West Wing
Booth #259
And Speak to Manure Men
Ross, Scott, or Don**



USED/RENTAL EQUIPMENT

- SPREADERS**
- (2) 1996 Knight 8030's, (1) with Lid and 21.5x16.1 Tires; (1) w/o Lid and 22.5 Truck Tires, Both in Good Shape
 - (2) Houle EL84 6000 Gal. 28Lx26 Tires, Excellent cond. Without Brakes, Both in Ex. Cond.
 - (1) 1994\$13,750
 - (1) 1997\$14,950
 - 1999 Houle 5,250 Gal. 28Lx26 Tires \$21,100
 - 1999 Houle 4800 Gal. 28Lx26, Brakes. CALL
 - Balzer 3350 Vacuum.....\$15,900
- PUMPS**
- Houle 12' Agi-Pump on 3 Pt. Sliding, 1000 PTO.....\$6,900
 - (2) Houle Maxi Pumps, 28"CALL
 - Houle Irrigation Pumps, on trailers, hyd. primers.CALL
- MISCELLANEOUS**
- Rubber Tire Scrapers, 3 pt. & Skid Steer; Also Push Blades
 - AgriMetal 5500, Full Hyd., Rd Bale Chopper.....\$12,900
 - (2) CADMAN 2625 Hard Hose Reels.....CALL
 - Ag Ram Hard Hose Reel, 2.5"x800', Slurry Turbine.....\$6,500
- COMING IN**
- Calumet 4,500 Gal w/Hyd. Drive.....\$3,500
 - Badger BN 184 26' Lagoon Pump.....\$3,000
 - Chromalloy 3300 Gal. Tank\$3,500
 - Putz 3-Pt. Agitator.....\$1,500

MID-ATLANTIC
agrisystems



4019 Ashville Rd.,
Quarryville, PA 17566
717-529-2782
800-222-2948

**Top Volume
HOULE
Dealer**