



**2000 GMC K3500 SLE**  
Ext Cab Dually 4WD, 6.5 Turbo Diesel, AT, A/C, Cruise, Tilt, PW, PDL P-Seat, 10,000 GVW, 4.10 LTD Slip Rear, 1,900 Mi., Black  
**\$29,900 - 717-335-0599**



**1999 FLD 112 DAY CAB** w/C10 350 HP (will flash 385 HP), Cat w/5 yr./500K Warr., 9 Spd., 40K Rockwell on Air Ride, 208" WB, 6 Alum. 22:5 Whls., 14,180 Weight, Only 22K Miles, Like New.....**\$53,900**  
**330-878-6630 M-F 8-5**

Anthony L.

# LANDIS

AUTO SALES

3394 Division Hwy., New Holland, PA 17557 (717) 355-0644  
Rt 322, 1-1/2 mi west of Blue Ball



**1992 FORD CLUBWAGON**  
12 Pass., 5.8, AT, PS, PB, PW, PDL, Dual Air, Tilt, Cruise, Cassette, Privacy Glass, Vinyl Int., White, 90,000 Mi  
**\$8,995**



**1993 FORD F-150 XL 4x4**  
Ext Cab, Short Bed, 300, 5 Sp., PS, PB, Dual Tanks, Black, 66,900 Mi  
**\$9,500**  
Also Available 1992 Ford F-150 4x4, 302, AT, A/C, 113k Mi **\$8,995**



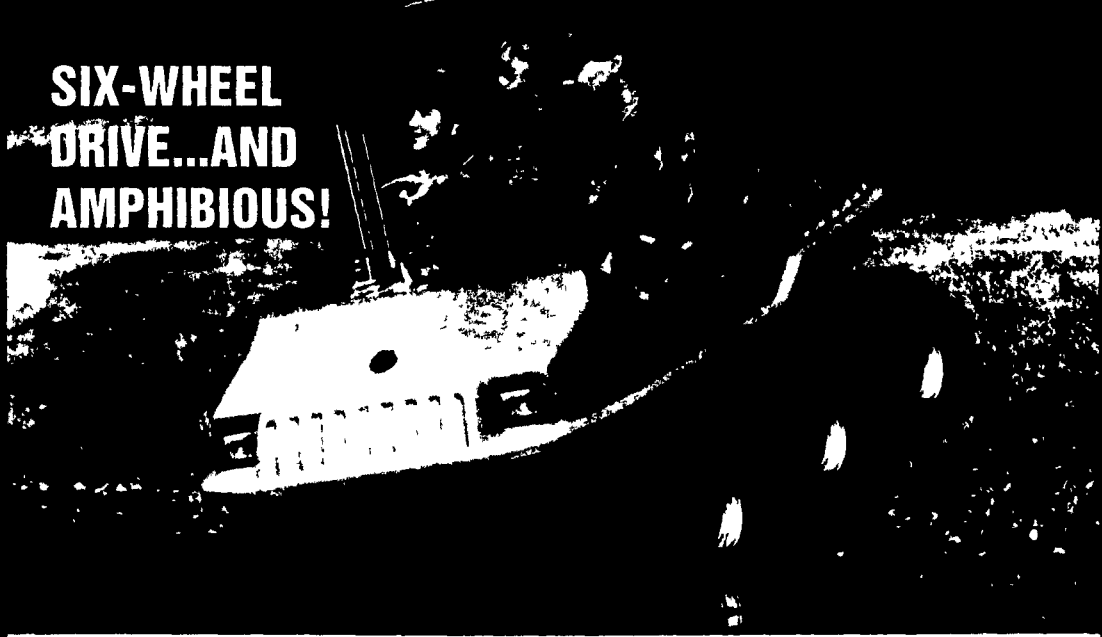
**1995 CHEVY ASTRO EXT AWD**  
4.3 Auto, PS, PB, A/C, Tilt, Cruise Cassette, Privacy Glass, Green 65,000 Mi  
**\$9,800**



**1993 FORD F-150 XL**  
300, AT, PS, PB, A/C Dual Tanks, Maroon, 54,000 Mi  
**\$8,995**

## A HUNTER NEEDS A MAX.

**SIX-WHEEL DRIVE...AND AMPHIBIOUS!**



When you want to go.... where no one has been before! You need the six-wheel drive of MAX.

Six wheels driving, all the time, take you and your friends through the toughest terrain to the best hunting in the world

Take your MAX directly into a pond, lake or stream. MAX is amphibious - it really floats. Climb the steepest hill with a full load - turn on a dime to maneuver through the thickest woods.

The MAX II holds two full sized adults, the MAX IV holds four of them.

Prices are low. In some instances they are less than four-wheel drive ATVs.

**MAX IV**  
FOUR PASSENGER



**BOYER MOTOR CO.**

**BOYER RV'S**

1065 South State St.  
Ephrata, PA 17522

**717-738-1885**

**800-786-1835**

**MAX**

GO WHERE NO ONE HAS BEEN BEFORE



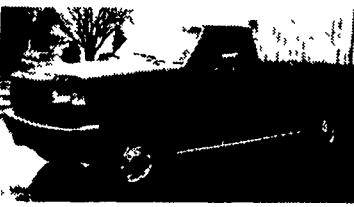
**98 CHEVY K2500 EXT. CAB CHEYENNE**  
4WD, 350 Vortec, AT, A/C, AM/FM Cass, Cruise, Tilt, PDL, 3.73 Ltd slip rear, 8600 GVW, 1 owner truck Dark Blue, 53,000 Mi  
**\$21,500**



**97 FORD F-250 XL SUPER CAB**

4WD, 351 Fuel Inj 5 Sp., A/C, AM-FM, 8800 GVW, 1 Owner Truck, Dk Blue, 67,000 Mi

**\$18,900**



**95 FORD F-250 XL**  
4WD, 7.3 Power Stroke Diesel, 5 Sp., A/C, Cruise, Tilt, Cass., 8600 GVW, Clean Truck, 84,000 Mi., Red  
**\$16,900**



**94 CHEVY K2500**

Extended Cab, 4WD, Silverado, 350 ft., AT, A/C, PW, PDL, Cruise, Tilt, Cass, Redding Utility Body, 8600 GVW, PA 1 Owner, 57,000 Mi., Maroon

**\$17,500**

## MARTIN'S AUTO SALES

1025 W. Main St. New Holland, PA 17557

**(717) 656-6621**

# AL HAMILTON MANAGEMENT COMPANY

P.O. Box 157 • 55 Doe Run Road • Manheim, PA 17545

Phone: 717-665-7145 • Fax 717-665-2137

★★★

**"CLEANEST TRUCKS AROUND"**

★★★



**1994 Ford LNT9000**  
L-10 Cummins, 280 HP, 10 Spd. Trans, PS, Air Brakes, A/C, Custom Int., 260 WB, 192 CA, 56,000 GVW  
**\$38,500**



**1992 Ford LN8000**  
C&C 7.8 L Diesel, 210 HP, 6 Spd. Trans., Custom Int., 234" WB, 168" CA, 33,000 GVW  
**\$19,500**



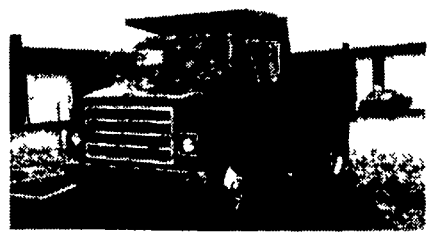
**2 - 1993 Int. 4900 C&C**  
DT-466, 6-Spd. Trans., 32,700 GVW, Custom Int., A/C, 186 C/A, 254 W.B., Exc. Cond.  
**\$22,500 Your Choice**



**1992 Ford LN8000**  
7.8L Ford Diesel, 210 Hp, 6 spd Trans, P.S., Air Brakes, 33,000 GVW, New 10' Dump  
**\$26,500**



**1995 Ford LN8000**  
8.3 Cummins, 210 Hp, 6 spd Trans, P.S., Air Brakes, A/C, 35,000 GVW, New 11' Dump  
**\$35,500**



**1985 Int. 2300**  
L-10 Cummins, 7 spd Trans, A/C, PS, Air Brakes, 35,000 GVW, New 10' Dump  
**\$22,500**



**'91 Int. 4900 C&C**  
DT-466, 6-Spd. Trans, 32,700- GVW, Custom Int., A/C, 186 - C.A., 254 - W.B., Exc. Cond.  
**\$19,500**



**1995 International 4700**  
DT466, 190 HP, 25,500 GVW, 236 W.B., 124 C.A., Low Mileage, 6+1 Transmission, AC, Custom Cab, Mint Condition  
**\$25,500**