

# LEFEVER BROS. CHEVROLET GEO.

YOUR DIRECT LINE TO GENUINE GM PARTS

**(800) 533-3837**

When you call the number listed above, you'll reach our wholesale parts specialists, who can help you keep your GM repair work moving quickly.

Ask about:

- Specializing in GM Medium Duty Trucks, Current and Obsolete.
- \$500,000 Parts Inventory.
- Parts Locator for Those Hard to Find Items.
- We Ship Anywhere, Local Delivery Available.
- Experienced, Knowledgeable Personnel.

Mon., Tues., Thurs., Fri.  
7:30 a.m.-4:30 p.m.  
Wed. 7:30 a.m.-8:30 p.m.  
Major Credit Cards Accepted

**(717) 432-9697**

Quality Dealer Since 1921  
406 U.S. Rt. 15, Dillsburg, PA 17019



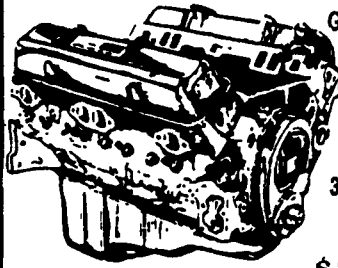
**We want your business.**



# JONES



**We want your business.**



**GM GOODWRENCH**  
350 V8 1973-85  
Part Number  
10067353  
New Engine - Not Rebuilt  
36 Month or 50,000 Mile  
Warranty

New Engine - No Core Fee **\$1,295<sup>00</sup>**

**WE'LL MATCH ANY COMPETITOR'S PRICE!**

**Goodwrench Transmissions Now In Stock! Call For Great Prices**

Call 394-0711 for prices on other New or Remanufactured Goodwrench Engines. 2.5 Liter thru 454 cid. Gas and Diesel

Chevrolet - Pontiac - Olds - Buick - Cadillac - GMC

## JONES GM PARTS CENTER

1335 Manheim Pike, Lancaster, PA 17604  
Easily Located on Rt. 72 Just off of Rts. 283 & 30  
Hours: Mon-Fri 7:30 a.m. - 8 p.m. Sat 7:30-3  
(717) 394-0711



### Appalachian Manufacturing, Inc. 330-222-2468



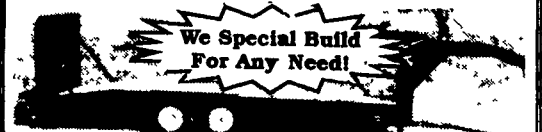
20,000# G.V.W. Oil Bath Axle  
10K Dual Tandem Trailers - Spring Assist Ramps  
Pintle Pull, 18x5, Dovetail ..... **\$4,750**  
Gooseneck, 20x5 ..... **\$5,000**



24' Gooseneck, 4' dovetail, 1-12,000# G.V.W., 6,000# axels w/easy lube, electric brakes, 7.50-16 tires, breakaway kit, ramps w/pressure treated deck, standard ..... 12,000 GVW **\$2,995**  
..... 14,000 GVW **\$3,195**



16' Car Hauler, diamond plate deck with W/D rings, self storing ramps, 7,000# G.V.W., elect. brakes, both axels 82" between wheel wells, breakaway kit incl  
16' Car Trailer **\$1,495** 18' Car Trailer **\$1,645**



21' Low Profile, 10,000#, axel w/easy lube, elect. brakes, pressure treated deck, 10,000# G.V.W., gooseneck ..... **\$3,100**  
Bumper pull ..... **\$2,950**

XXXXXXXXXXXXXXXXXXXXXXXXXXXX

1992 GMC 32,000 GVW, 52,000 GVW, Cat 3116, low miles, 6 speed  
**1-800-248-4418**

XXXXXXXXXXXXXXXXXXXXXXXXXXXX



## HUBCO

311 HAUSMAN ROAD, ALLENTOWN, PA 18104-8327

**(610) 395-5875**

or Toll Free - **888-322-1599**



1989 white GMC integral sleeper, N-14 Cummins, 365 H.P., 9-speed, air suspension, air slide 5th wheel.



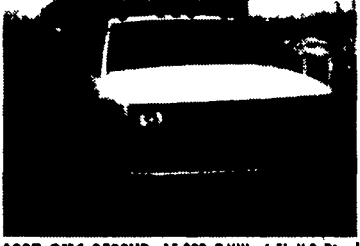
1996 Ford Aeromax, 68" stand-up sleeper, Cat 3406E, 475 H.P., 10-speed OD, aluminum wheels, fuel tanks, very clean owner/operator truck.



1988 Peterbilt 13-210, 8.3L Cummins, 6-speed trans, 24-foot van body, 211,000 miles



1995 GMC, C3500 HD, 15,000 G.V.W., V-8 diesel, 5-speed, new 14-foot flatbed body.



1997 GMC 3500HD, 15,000 G.V.W., 6.5L V-8 Diesel, Manual Trans., 9 1/2 ft. Stake Body, 73,000 Miles, Nice Condition.



1995 Ford F-800, Cummins diesel, 5-speed, 18' Morgan van body with liftgate, 90,000 miles.

1986 Mack Model R, Mack Duplex Trans 217 Eng Twin Screws Camel Back Susps No Rust! Will Take 24' Flatbed or 18' Grain Body

1994 International, Remaut DT466 Eng, 0 Miles Tires & Brakes 90%, AC, PS, PB, 5 Speed

1993 International, 7.3 IH Diesel 5 Speed Hyd Brakes, 14 Body w/Lift Gate

1986 Ford E350, 14' Body, New Tires Brakes & Paint Rebuilt 69 Diesel Eng 123,000 Miles

1992 Dodge Ram 150, V6 Mag Eng, Auto, New Brakes Tires & Shocks, 75,616 Miles Excellent Like New!

1994 Dodge Ram 350, One Ton Van 383 V8 Auto PS PB PA Inspected

1989 Plymouth Voyager Rebuilt Eng & Trans New Brakes & Tires Priced To Sell!

I'M COMPLETELY REFURBISHED From Front to Rear! The One Way You Can Replace Me Is To Buy New!

1984 GMC 7000, 366 V-8 Gas 5+2 spd Trans Hyd Brakes New Paint Color Red 28,000 GVW 108,184 Original Miles New Tuneup New Service New Tires New Brakes PA State Insp

1986 GMC w/Thiele 8-1/2' Dump Bed

Best Mechanical Truck In The Area Plus The Cleanest! We service what we sell, the best used vehicles in the area! Good Selection of Storage Bodies

**Phone 717-898-0683**  
**CHARTER ENTERPRISES, LTD.**  
270 Hostetter Road, Manheim, PA

# KEIM

YOUR CHEVY GEO FAMILY

(717) 768-8225  
(800) 223-KEIM

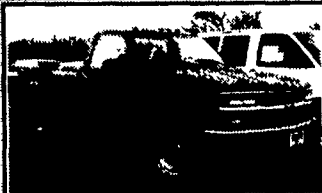
RT. 30 Lincoln Highway East  
Paradise, PA 17562

**YOUR TRUCK, VAN & 4x4 HEADQUARTERS**

**1-800-223-KEIM**



**94 CHEVY K3500 EXTEND CAB**  
4x4, Dually, Burgundy & White, 454 V8, AT, Silverado, 49,000 Mi.



**98 CHEVY K2500**  
Reg. Cab, 4x4, 350 V8, 5 Spd., A/C, Cass



**93 CHEVY H.D. DUMP TRUCK**  
6.5 Diesel, 5 Speed, with Plow Only 49,000 Mi.



**98 CHEVY SILVERADO**  
1 Ton Extend Cab Dually 4x4, Blue/Gold, 350 V8, AT, Only 6,000 Mi



**99 CHEVROLET K3500**  
Crew Cab Single Rear Wheel 454 V8 AT, A/C, Only 13,000 Mi., Dark. Blue



**(2) 2000 CHEVY G30 CUT AWAY HIGH CUBE VANS**  
12' & 14' Bodies, 350, AT, A/C, Both White



**99 CHEVY 1 TON REG. CAB**  
2WD, Stake Body, 350 V8, AT, A/C



**2000 CHEVY C30 CHASSIS CAB,**  
454 V8 AT, A/C, You pick the body