

Four States Livestock

Hagerstown, Md.
Dec. 22, 1999

Report Supplied By Auction

SLAUGHTER COWS: 61 HEAD, STEADY. UTILITY 37.00-41.00; HIGH DRESSING 41.00-44.00; CANNERS 32.00-36.50; SHELLY 31.00 DOWN. BULLS: YG#1 1400-1900 LBS. 46.00-49.00; 1 1116 LBS. AT 43.00. FED STEERS: NONE. FEED HEIFERS: NONE OFFERED. VEAL CALVES: 125 HEAD. CULLS 85-110 LBS. 26.00-30.00, 60-85 LBS. 16.00-25.00.

FARM CALVES: HOLSTEIN BULLS, GOOD DEMAND. #1 95-120 LBS. 130.00-167.00, 85-94 LBS. 70.00-110.00; #2 90-120 LBS. 90.00-125.00, 80-90 LBS. 35.00-55.00; HOLSTEIN HEIFERS #1 95-120 LBS. 270.00-282.00; #2 85-110 LBS. 175.00-240.00; BEEF X BULLS TO 123.00; BEEF X HEIFERS TO 92.00. BUTCHER HOGS: NONE. SOWS: 24 HEAD, LIGHTWEIGHTS 5.00 HIGHER. 300-400 LBS. 28.00-34.00; 400-500 LBS. 26.00-34.00; 500-700 LBS. 29.00-32.50.

BOARS: 8 HEAD. 300-375 LBS. 9.00-15.50; 400-800 LBS. 5.50-7.00. STOCK CATTLE: 70 HEAD. STEERS MED. AND LARGE FRAME 80.00-89.00; 400-600 LBS. 71.00-82.00; 600-700 LBS. 69.00-73.00; 700-800 LBS. 55.00-64.00; HOLSTEINS X 200-400 LBS. TO 71.00, 500-600 LBS. 50.00-59.00.

HEIFERS: 300-500 LBS. 64.00-72.00; 500-600 LBS. 66.00-77.00; 600-700 LBS. 65.00-70.00.

BULLS: MED. AND LARGE FRAME 500-700 LBS. 63.00-72.00.

DAIRY REPLACEMENTS: 7 HEAD. 3 LARGE SPRINGERS 1325.00; LARGE SPRINGING COW 1035.00; JERSEY X AT 410.00; SMALL FRESH HOLSTEINS 510.00.

SHEEP: 2 LARGE 29.00-33.00. LAMBS: CHOICE TO PRIME 70-85 LBS. 94.00-98.00.

GOATS: 1 LARGE WHETHER 78.00; MEDIUM 40.00-50.00; SMALL 20.00-35.00.

PIGS AND SHOATS: BY THE LB. AT 32.00; 4 HEAD 150 LBS. AT 39.00.

Friend's Stockyard Inc.

Accident, Md. 21520

Report Supplied by Auction
Mon., December 27, 1999

STOCK BULLS AND STEERS (200-500 LBS.) 50.00-91.00.

STOCK HEIFERS: 36.00-84.00. SLAUGHTER STEERS: GOOD TO CHOICE 66.00-71.75; MEDIUM TO GOOD 52.00-63.50, HEAVY CHOICE OVER 1450 LB. 50.00-62.00.

HOLSTEIN STEERS: HEAVY CHOICE 40.00-56.00, LIGHT 35.00-46.50.

SLAUGHTER HEIFERS: GOOD TO CHOICE 65.00-71.75; MEDIUM TO GOOD 45.00-64.00.

BULLS: HEAVY 38.00-48.00, LIGHT 38.00-50.00.

COWS: UTILITY (HOLSTEIN) 34.75-42.75, COMMERCIAL TO GOOD 30.00-35.50, CULL COWS 30.00 AND DOWN.

VEALS: GOOD TO CHOICE 50.00-80.00, MEDIUM TO GOOD 20.00-47.00.

BOB CALVES: 30.00 AND DOWN. HOLSTEIN BULL CALVES - RETURN TO FARM (90 TO 120 LB.)-UP TO 140.00.

HOLSTEIN HEIFER CALVES - RETURN TO FARM (90 TO 120 LB.)-UP TO 275.00.

BEEF CROSS CALVES - RETURN TO FARM UP TO 108.00.

HOGS TOP QUALITY UP TO 42.00. LAMBS CHOICE UP TO 75.00.

HEIFERS: 300-500 LBS. 64.00-72.00; 500-600 LBS. 66.00-77.00; 600-700 LBS. 65.00-70.00.

BULLS: MED. AND LARGE FRAME 500-700 LBS. 63.00-72.00.

DAIRY REPLACEMENTS: 7 HEAD. 3 LARGE SPRINGERS 1325.00; LARGE SPRINGING COW 1035.00; JERSEY X AT 410.00; SMALL FRESH HOLSTEINS 510.00.

SHEEP: 2 LARGE 29.00-33.00. LAMBS: CHOICE TO PRIME 70-85 LBS. 94.00-98.00.

GOATS: 1 LARGE WHETHER 78.00; MEDIUM 40.00-50.00; SMALL 20.00-35.00.

PIGS AND SHOATS: BY THE LB. AT 32.00; 4 HEAD 150 LBS. AT 39.00.

AUCTIONS EVERY MON. 7:30 P.M.

North Jersey Livestock

Hackettstown, NJ

Report Supplied by Auction
Tuesday, December 28, 1999

CALVES .10-2.95.
COWS .10-.43% .
EASY COWS .09-.32% .
FEEDERS 300-600 LBS. .38-1.26.
HEIFERS .25% -.63.
BULLS .41-.77.
STEERS .40-.71.
HOGS .07.
ROASTING PIGS EACH 10.00.
SOWS .15.
SHEEP .05-.65.
LAMBS EACH 33.00-88.00.
LAMBS PER LB. .51-1.85.
GOATS EACH 40.00-162.50.
KIDS EACH 5.00-80.00.
HIDES EACH 15.00.
810 TOTAL HEAD.

New Holland Horses

New Holland Sales Stables
New Holland, Pa.

Monday, December 28, 1999

Report Supplied By Auction

74 HEAD. MARKET STEADY.
WORK HORSES \$75.00-1125.00,
PAIRS 2100.00-4400.00.
DRIVING HORSES 510.00-1075.00.
RIDING HORSES 485.00-900.00.
PONIES 150.00-400.00.
LARGE PONIES 500.00-650.00.
COLTS 160.00-500.00.
40 HEAD DRIVING HORSES
975.00-3350.00.

Greencastle Livestock Market

Dec. 23 and 27
Hay & Straw

Report Supplied by Auction
49 LOADS OF HAY.
MIXED HAY: 60.00-175.00.
TIMOTHY: 100.00-165.00.
STRAW: 53.00-90.00.
CORN FODDER: 11.00-14.00 BALE.

Heinsey's Poultry

Roots, East Petersburg

Tuesday, December 28, 1999

Report Supplied By Auction

Muscovy duck drakes .50-.58; hens .50-.56.
Peking ducks, .40-.52.
Red fowl 4-4 1/2 .30-.48, 5-6 .50-.82.
Crossbred fowl 5-9 lbs. .40-.74.
Crossbred roosters 4-6 lbs. .60-.84, 7-11 lbs. .50-.82.
Guinea fowl 1.90-2.35.
Bantam roosters 2.00-3.50 ea., hens 1.50-3.25.
Leghorn hens .12-.24.
Leghorn rooster, not enough.
Silkies 2.00-3.00.
Geese, 9-14 lbs. .30-.44.
Pigeons 1.50-2.25 ea.
White pigeons 2.50-3.75 ea.
Rabbits 4-6 lbs. 1.20-1.82, 7-11 lbs. 1.00-1.44.
Bunnies 1.00-4.50 ea.
Guinea pigs 3.00-8.25 ea.
Goats, 38.00-70.00.
Kids 14.00-32.00 ea.
Doves not enough.
Chickens not enough.
Pullets .60-.74.
Total coops 640.

Belleville Poultry

Belleville, Pa.

Wednesday, Dec. 29, 1999

Report Supplied By Auction

Geese: 2.00-3.00.
Turkeys: 8.00.
Guineas: 5.00 ea.
Roosters: 2.00-5.00 ea.
Bantams: .50-2.00 ea.
Heavy hens: 2.00-3.00 ea.
Silkies: none.
Muscovy hens: 2.00-2.50 ea.
Muscovy drakes: 3.00-4.00 ea.
Mixed ducks: none.
Barn pigeons: 2.00 ea.
White birds: 2.25-2.75 ea.
Fancy birds: none.
Peacocks: none.
Pheasants: none.
Doves: 4.00.
Quail: none.
Guinea Pig: 4.00-5.00 ea.
Rabbits: under 4 lbs. 1.00-6.00 ea., 4-6 lbs. 7.00-12.00 ea., over 6 lbs. 13.00-19.00 ea.
For more information phone 717-242-2898.

New Holland Horses

New Holland Sales Stables

New Holland, Pa.

Monday, December 27, 1999

Report Supplied By Auction

118 HEAD. MARKET STEADY.
WORK HORSES 910.00-1400.00.
DRIVING HORSES 585.00-810.00.
RIDING HORSES 450.00-835.00.
REGISTERED RIDING 975.00-1250.00.
BETTER RIDING 985.00-1110.00.
ONE AT 1850.00.
PONIES 185.00-375.00.
COLTS 160.00-385.00.
REGISTERED COLTS 585.00-1000.00.

New Holland Dairy

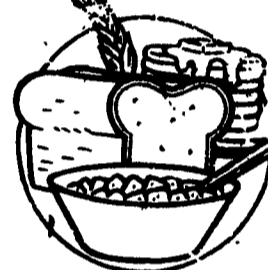
New Holland Sales Stables

New Holland, Pa.

Wednesday, Dec. 29, 1999

Report Supplied By Auction

71 DAIRY COWS, 170 HEIFERS, 7 BULLS. MARKET STEADY.
LOCAL FRESH COWS 460.00-1400.00, ONE AT 1725.00.
LOCAL SPRINGERS 685.00-1375.00.
BETTER FRESH COWS: 1500.00-1725.00.
LARGE HEIFERS: 1200.00-1385.00,
SMALL HEIFERS 450.00-885.00.
SHORT BRED HEIFERS: 635.00-1135.00.
OPEN BREEDING AGE HEIFERS: 700.00-875.00.
BULLS: 360.00-675.00, PUREBREDS 725.00-750.00.
UPSTATE LOADS FRESH 1275.00-1500.00.
FRESH HEIFERS 1035.00-1450.00.
SMALL OPEN HEIFERS 560.00-660.00, SMALLER 110.00-460.00.



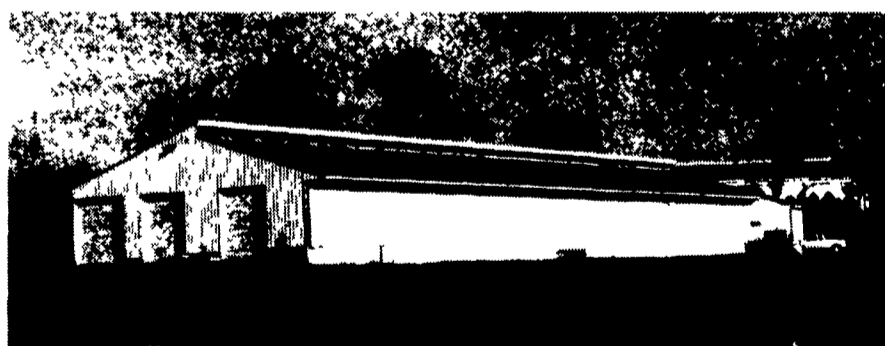
Farmer Boy Ag Systems Inc.

OPEN HOUSE

Friday, January 14 - 10:00 AM to 2:00 PM

HIDDEN VIEW HOLSTEINS

Tim & Teresa Kissling & Mark Wolfskill, Robesonia, PA



54'x192' Total Slatted Heifer Barn



You Are Invited To Visit Hidden View Holsteins & See The Latest And Most Modern Design In Heifer Facilities. Featuring: Freestalls, Total Slatted Floor and Enclosed Drive Thru Feed Alley

Directions:

Take Route 422 to Robesonia. Turn left on Bernville Road (video store on the corner). Go approximately 2 miles & turn right on Brownsville Road. Go approximately 2 1/2 miles to farm on the right (Hidden View Holsteins).

Refreshments Available

Hours:
Mon.-Fri. 7 to 5:30
Sat. 7:30 to Noon

Farmer Boy Ag Systems Inc.

P.O. Box 435, 410 East Lincoln Avenue, Myerstown, PA 17067

717-866-7565 • 1-800-845-3374

We Offer,

- Quality Turn-Key Swine, Poultry and Dairy Facilities
- A Full line of parts and supplies in stock for your Swine, Poultry or Dairy Operation
- 24 Hour Service by our team of qualified technicians