



1994 Case 580, Super K Turbo, 4x4, 4-in-1 Cust. Cab, 2,500 Hrs., \$33,500

717-351-0867 6pm to 10pm



1988 Diamond Reo Tri Axle Or Ten Wheeler L10 Cummins /8LL Trans 20 to Choose From Starting at \$15,000

Heavy Equipment Loader Parts, Inc. 10070 Allentown Blvd., Grantville, PA 17028 (717) 469-0039 (800) 446-0505

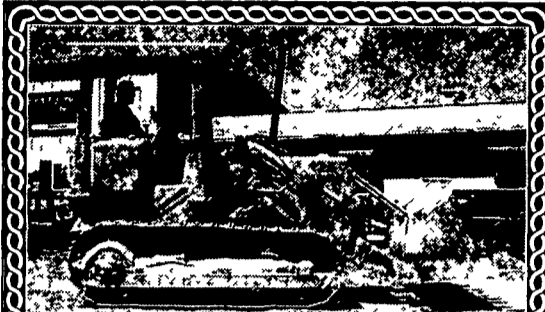
FOR NEW AND USED CONSTRUCTION EQUIPMENT PARTS AND ATTACHMENTS CALL

H.E.L.P., INC.
(717) 469-0039
1-800-446-0505

Specializing In Caterpillar
Parts also available for Case, John Deere, IHC, Fiat, Etc.

HEAVY EQUIPMENT LOADER PARTS, INC.
10070 Allentown Blvd. Grantville, PA 17028

FORKLIFTS
2,000 TO 15,000 LB.
\$2,000 & upwards
GAS/LP-DIESEL-ELECTRIC
Cushion-Pneumatic-Rough Terrain
New Komatsu Forklifts Available
PA INDUSTRIAL EQUIPMENT
(610) 369-9778



Cat 941/951 CCL Loader 2 to Choose from starting at \$16,000 Sale Or Rent

Heavy Equipment Loader Parts, Inc. 10070 Allentown Blvd. Grantville, PA 17028 (717) 469-0039 (800) 446-0505

Forklifts
New and reconditioned
For Sale or Rent
Heavy duty fork extensions
Call For Prices

Don't trade or throw out that old engine.
Have it overhauled for a fraction of the cost of new!
All work is guaranteed.

1995 Toyota 5,000 lb., Pneumatic Tire.....	\$13,900
1990 Yale 5,000 lb., Cushion Tire.....	\$6,900
Yale 8000 lb., Cushion Tire, 18' Lift.....	\$6,950
1994 Yale 6,000 lb. Cushion Tire.....	\$9,500
Allis Chalmers 4000 lb.....	\$2,450
Clark 3,000 lb.....	\$1,500
Hyster 3000 lb., Electric.....	\$3,950
1999 Komatsu 4000 lb., Pneumatic Tire	
Komatsu 8000 lb., 2 Stage, Side Shifter..	\$7,500
Hyster 3000 lb., Pneumatic Tire.....	\$4,500
Hyster 8000 lb., Diesel, Pneumatic Tire	\$10,500
Aluminum Dock Plate, 60"x 72".....	\$495

Call For Special Pricing on Forklift, Skid Loader and Scissors Lift Rentals

SAM STOLTZFUSS
5917 Plank Rd.
Narvon, PA 17555
For Service Calls
717-442-9334

Western 7 1/2' power angle snow plow, complete w/frame & controls, off 1988 Chevy, \$1,000. 610-377-8817.
3500 lb. Komatsu forklift, 152" lift, 6000 hrs, runs perfect, no leaks, \$1300 obo. 717-442-8143

Earth Pan, pull type, hyd. 6 yard, requires 100 hp, \$2,500. 410-833-9091

WANT TO BUY all makes and models of construction equipment. 301-371-5500.

WANTED TO BUY: Construction equipment, backhoes, dozers, loaders, excavators, skid steers. 877-529-9328 toll free.

	
BOBCAT 7753 SKID LOADER, 2700 Hrs. Good Condition, Good Rubber \$9,800	MARKLIFT 4X4 25' \$4,500
1996 1845C SKID LOADER, 98 Hrs., Like New.....\$18,700	
717/529-2641 • 717/529-6359 No Sunday Calls	

1987 Patchman Hot Top Recycler
Grinds & Reprocesses For Pot Holes & Patch Construct Repairs
\$12,500
978-462-1000

MSHE Michael Sunday Heavy Equipment, Inc.
EQUIPMENT SALES, RENTALS AND SERVICE
735 Range End Rd., Dillsburg, PA 17019 • (717) 432-2834

SHOP SERVICES

MECHANICAL
• Undercarriage Rebuilds
• Component Overhauls & Rebuilds
• Complete Machine Rebuilds
• Problem Diagnostics

WELDING
• Boom Lacing • Panel Fabrication
• Line Boring • Stress Crack Repairs
• Machine Modifications

REFINISHING
• Paint Removal • New Paint
• Sheet Metal Repairs

MOBILE SERVICES

MECHANICAL
• Routine PM's
• Breakdown Repairs
• Machine Assembly and Dismantling
• More Involved Repairs Available

WELDING
• Boom Lacing • Crack Repairs
• Bucket Repairs • Lite Fabrication
• Line Boring

www.qualityheavyequipment.com

831 S. College St. (P.O. Box 409)
Myerstown, PA, 17067
HOURS: Mon-Fri • 7:30-5:00
Saturday • 7:30-Noon
http://www.wengers.com
wengers@ptd.net

WENGENERS OF MYERSTOWN
Construction Equipment & Parts

717-866-2130
Salesman: Ken Baum
Nights: (717) 272-9583
Fax (717) 866-4300
RENTALS AVAILABLE

CURRENT INVENTORY

WHEEL TIRED LOADERS

(1) JD 450G IV 1996, 800 Hrs. Komatsu D31A-17, 1986 R.O.P.S., 6 Way.....	\$19,500
Case 850 B 6-Way.....	\$21,500
(2) Cat D4C 1989 6-Way.....	\$29,500
Komatsu D31E-20 6-Way.....	\$37,500
Cat D4H 1988 6 Way.....	\$39,500
Cat D5C LGP, Cab 1993.....	\$46,500

SKID STEER LOADERS

Case 455C, 1986, ROPS.....	\$19,500
JD 555A 1985, ROPS.....	\$19,500
Cat 953 1981 Cab.....	\$37,500
1989 Cat 953 Cab, Clean.....	\$65,000

FORKLIFTS

(2) Hyster S100XL-2 1995 5-Ton, LP Gas.....	\$13,000 ea.
(2) Hyster S50XL-2 1995, LP Gas, 5,000 Lb..	\$11,000 ea.
JLG 60H Manlift, 1985, diesel.....	\$21,500
JCB 505-19 1991.....	\$29,500
JCB 510-40 1995.....	\$56,500

WHEEL TIRED LOADERS

JCB 409 1995 cab, 1,600 hrs.....	\$34,500
JCB 409B 1997 cab.....	\$37,500
Volvo L-50B, 1993, cab, QT.....	\$45,000
Cat IT18, 1985, cab.....	\$46,500
Cat IT 14B, 1993, cab, low hrs.....	\$53,500
Cat 966D 1983 cab.....	\$55,000
Cat 928F, 1995, Cab, Air, Clean.....	\$74,500

TRAILERS

Dresser A450E, 1988, Cab & Ripper.....	\$34,500
Cat 12G Cab.....	\$39,500

EXCAVATORS

NH L553.....	\$7,900
JD 675B, 1988, Diesel.....	\$8,500
New Holland 781, 1986.....	\$8,900
New Holland LX665, 1994.....	\$14,500
New Holland 783, 1989 w/Backhoe.....	\$15,900

EXCAVATORS

Kubota KX101 w/Blade.....	\$19,500
Cat E70B, 1989, 3500 hours.....	\$26,500
Hitachi EX100, 1990, 3400 hours.....	\$29,500
Cat 307, 1994, 2600 hours.....	\$32,500
Hitachi EX120-2 1991.....	\$34,500
1996 Komatsu PC-120-6E.....	\$57,500
1996 Komatsu PC-120-6E.....	\$59,500
Cat 320L, 1993, 3800 Hrs.....	\$69,500
Cat 320L, 1994, 2200 Hrs.....	\$79,500
Cat 320BL, 1996, 3600 Hrs.....	\$95,000

ROLLERS

(2) Sheepsfoot Roller.....	ea. \$4,500
Essick VR42RDT Tow Package.....	\$4,500
Dynapac CC12, 1986.....	\$12,500
I.R. ST60, 1993, 50" Smooth.....	\$19,500
Dynapac CA 15D, 1973, 66" Smooth, DD.....	\$19,500
Dynapac CA 15D, 1976, 66" pad foot.....	\$19,500
Rex SP600, 66" Smooth, 1980-82.....	\$20,000
Dynapac CA 15D, '84, 66" smooth, DD.....	\$24,500
Bomag BW 142D D.D.....	\$24,500
Bomag BW 142PD D.D.....	\$24,500
Dynapac CA25 II, 1984, 84" Drum Drive.....	\$26,500
Dynapac CA15 66".....	\$29,500
I.R. SD100D 84" Smooth 1988.....	\$34,500
Cat CS 3236 1997, 200 Hrs.....	\$39,500

TRAILERS

1999 4 Ton Tag-a-long, 6.5x14.....	\$1,700
1999 4 Ton Tag-a-long, 6.5x16.....	\$2,300
1999 4 Ton Tag-a-long, 6.5x18.....	\$2,400
1999 4 1/2 Ton Tag-a-long, 8x19.....	\$3,750
1984 Eager Beaver 12 Ton, Electric.....	\$4,500
1994 Towmaster 10 Ton.....	\$4,900

MISCELLANEOUS

Clark American 2000 Sweeper, lpg.....	\$4,000
Sweepster CP 84PP Sweeper 84" Gas-Pull.....	\$4,500
Puckett Bros T650B, 1988, paver.....	\$10,500
Gravely 1210B Pro Chipper DSL, 200 hrs.....	\$18,500
Euclid R-22 End Dump, 1967.....	\$21,500
Ford Tandem Rollback 1987 26' Winch.....	\$29,500
Cat D250D, 1993, Cab, Clean.....	\$94,500